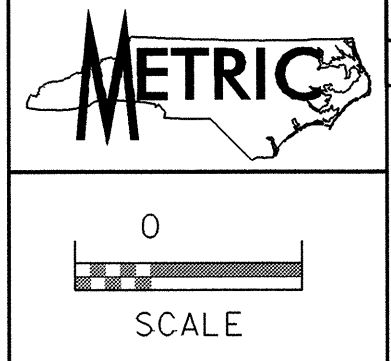
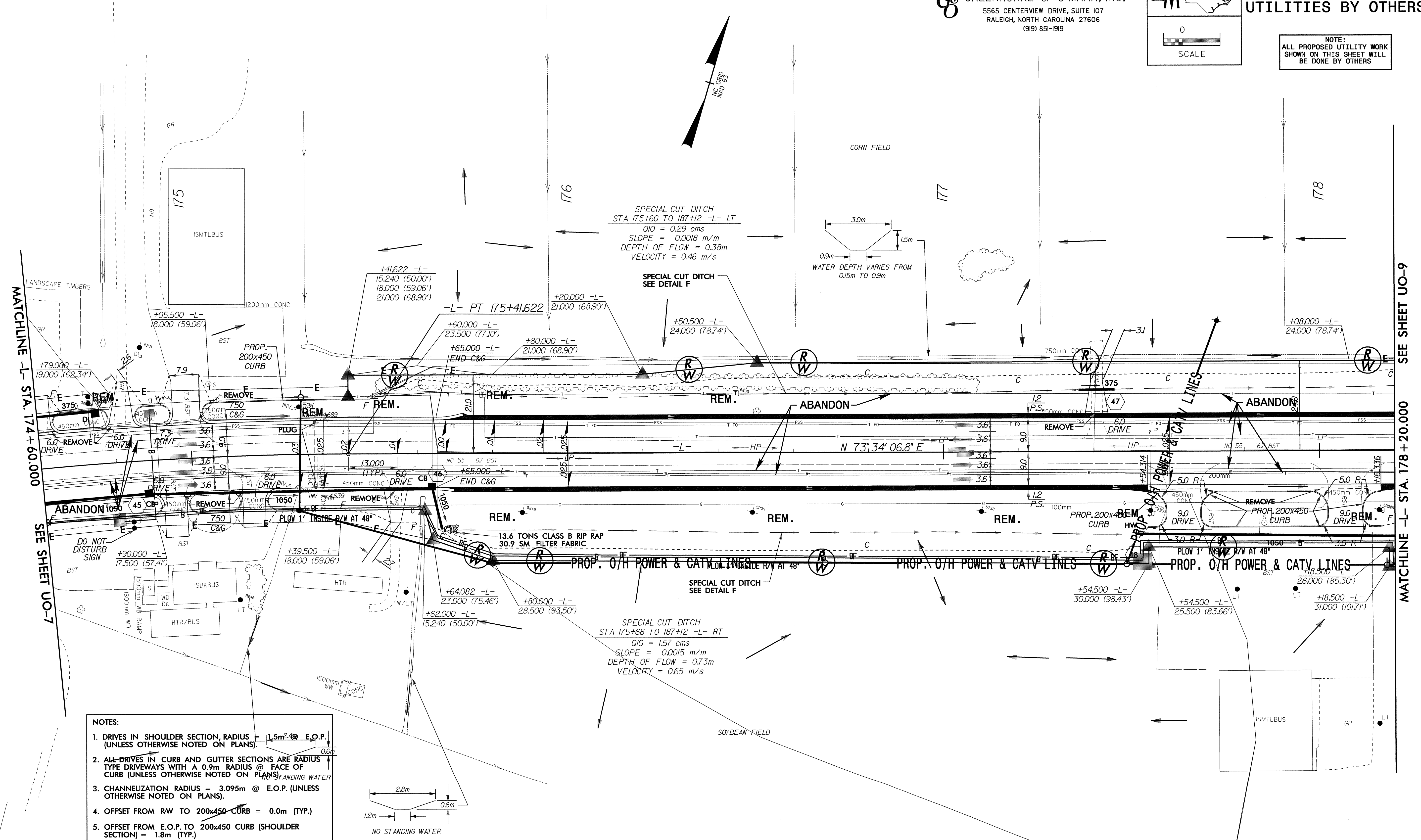


042597
26-OCT-2004 13:51
R:\Utilities\2004\1351\2597\2597.dwg
R:\Utilities\2004\1351\2597\2597.dwg

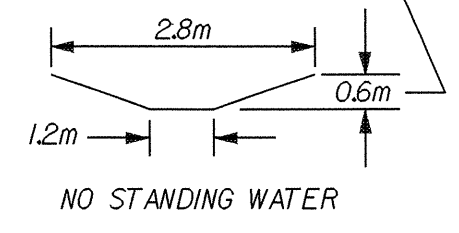
GREENHORNE & O'MARA, INC.
5565 CENTERVIEW DRIVE, SUITE 107
RALEIGH, NORTH CAROLINA 27606
(919) 851-1919



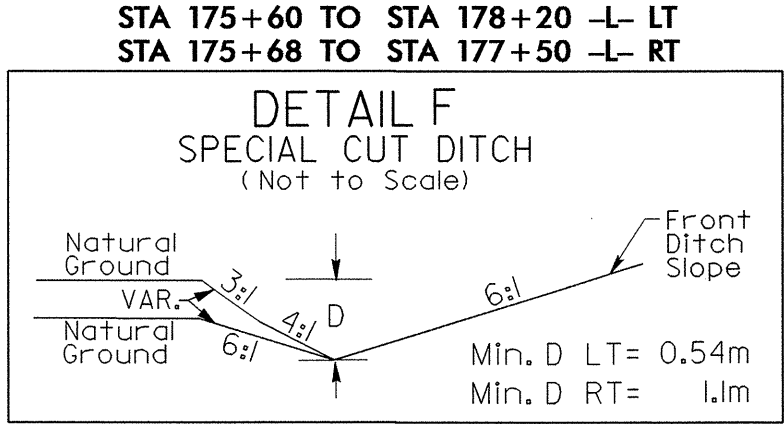
PROJECT REFERENCE NO. R-2539C SHEET NO. UO-8
UTILITIES BY OTHERS
NOTE:
ALL PROPOSED UTILITY WORK SHOWN ON THIS SHEET WILL BE DONE BY OTHERS



- NOTES:**
1. DRIVES IN SHOULDER SECTION, RADIUS = 1.5m @ E.O.P. (UNLESS OTHERWISE NOTED ON PLANS).
 2. ALL DRIVES IN CURB AND GUTTER SECTIONS ARE RADIUS TYPE DRIVEWAYS WITH A 0.9m RADIUS @ FACE OF CURB (UNLESS OTHERWISE NOTED ON PLANS).
 3. CHANNELIZATION RADIUS = 3.095m @ E.O.P. (UNLESS OTHERWISE NOTED ON PLANS).
 4. OFFSET FROM RW TO 200x450 CURB = 0.0m (TYP.)
 5. OFFSET FROM E.O.P. TO 200x450 CURB (SHOULDER SECTION) = 1.8m (TYP.)



-L-
PI Sta 174+62.032
 $\Delta = 10^\circ 16' 30.8''$ (RT)
L = 159.609
T = 80.019
R = 890.000
S.E. = .03
R'OFF = 39.0



SEE SHEET NO. 32 FOR -L- PROFILE

MATCHLINE -L- STA. 174+60.000
MATCHLINE -L- STA. 178+20.000
SEE SHEET UO-7
SEE SHEET UO-9