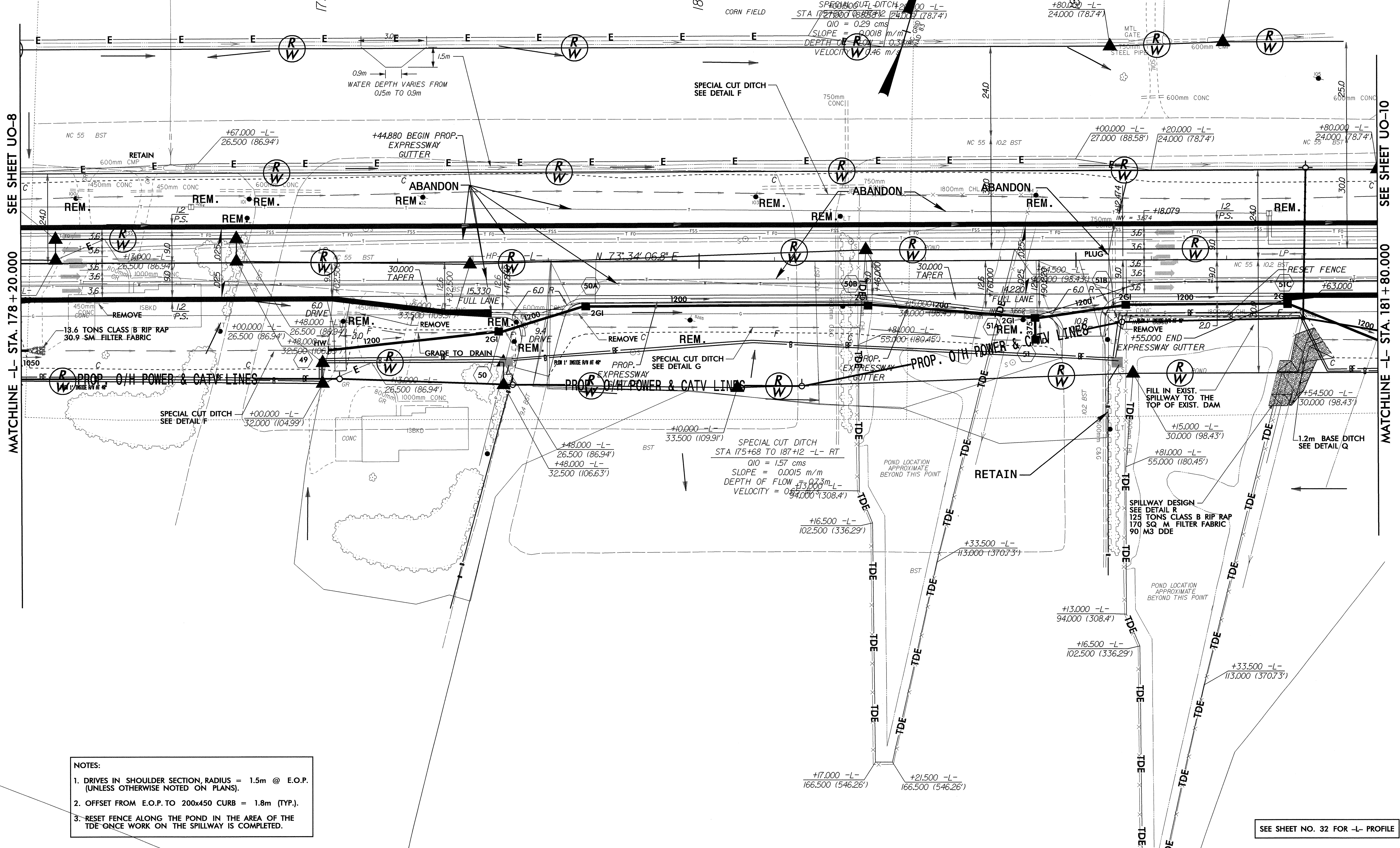
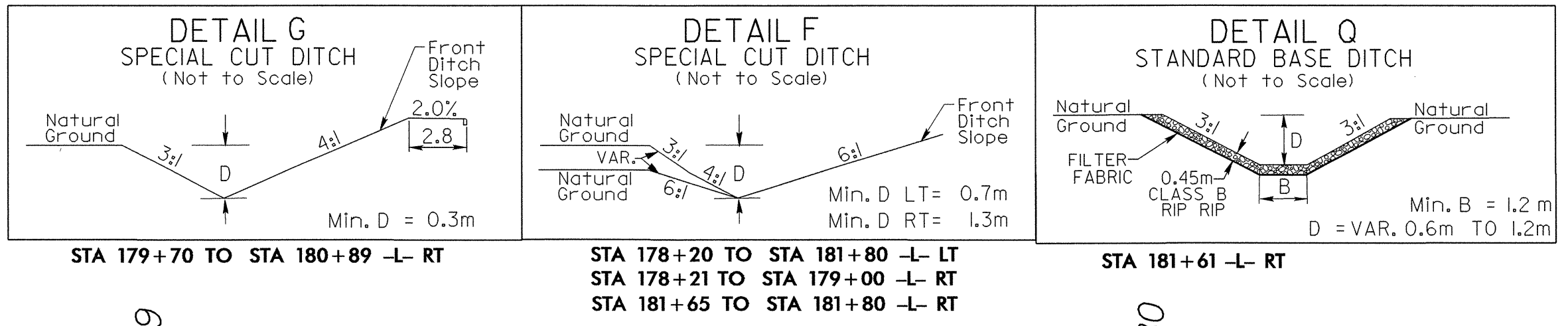


UTILITIES BY OTHERS

NOTE:
 ALL PROPOSED UTILITY WORK SHOWN ON THIS SHEET WILL BE DONE BY OTHERS



SEE SHEET UO-8

MATCHLINE -L- STA. 178 + 20.000

SEE SHEET UO-10

MATCHLINE -L- STA. 181 + 80.000

- NOTES:
1. DRIVES IN SHOULDER SECTION, RADIUS = 1.5m @ E.O.P. (UNLESS OTHERWISE NOTED ON PLANS).
 2. OFFSET FROM E.O.P. TO 200x450 CURB = 1.8m (TYP.).
 3. RESET FENCE ALONG THE POND IN THE AREA OF THE TDE ONCE WORK ON THE SPILLWAY IS COMPLETED.

SEE SHEET NO. 32 FOR -L- PROFILE