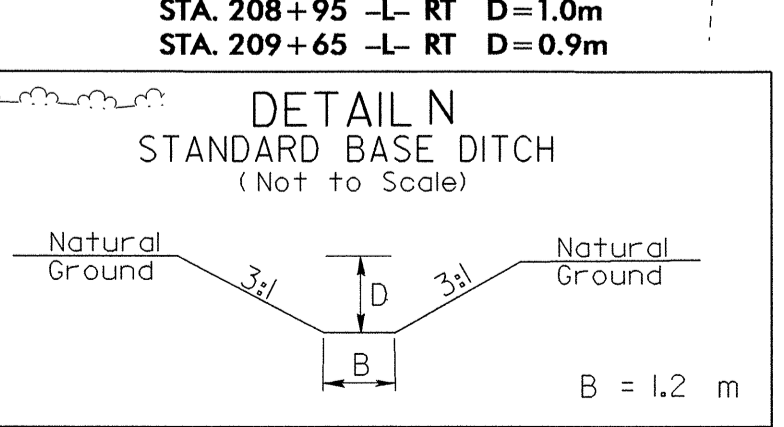
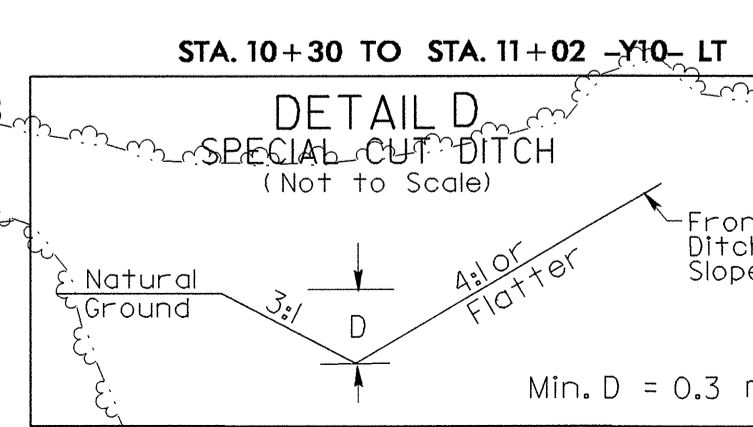
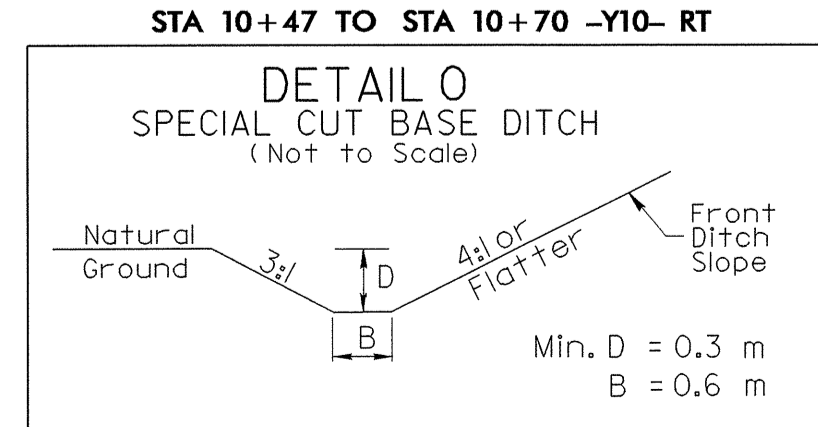
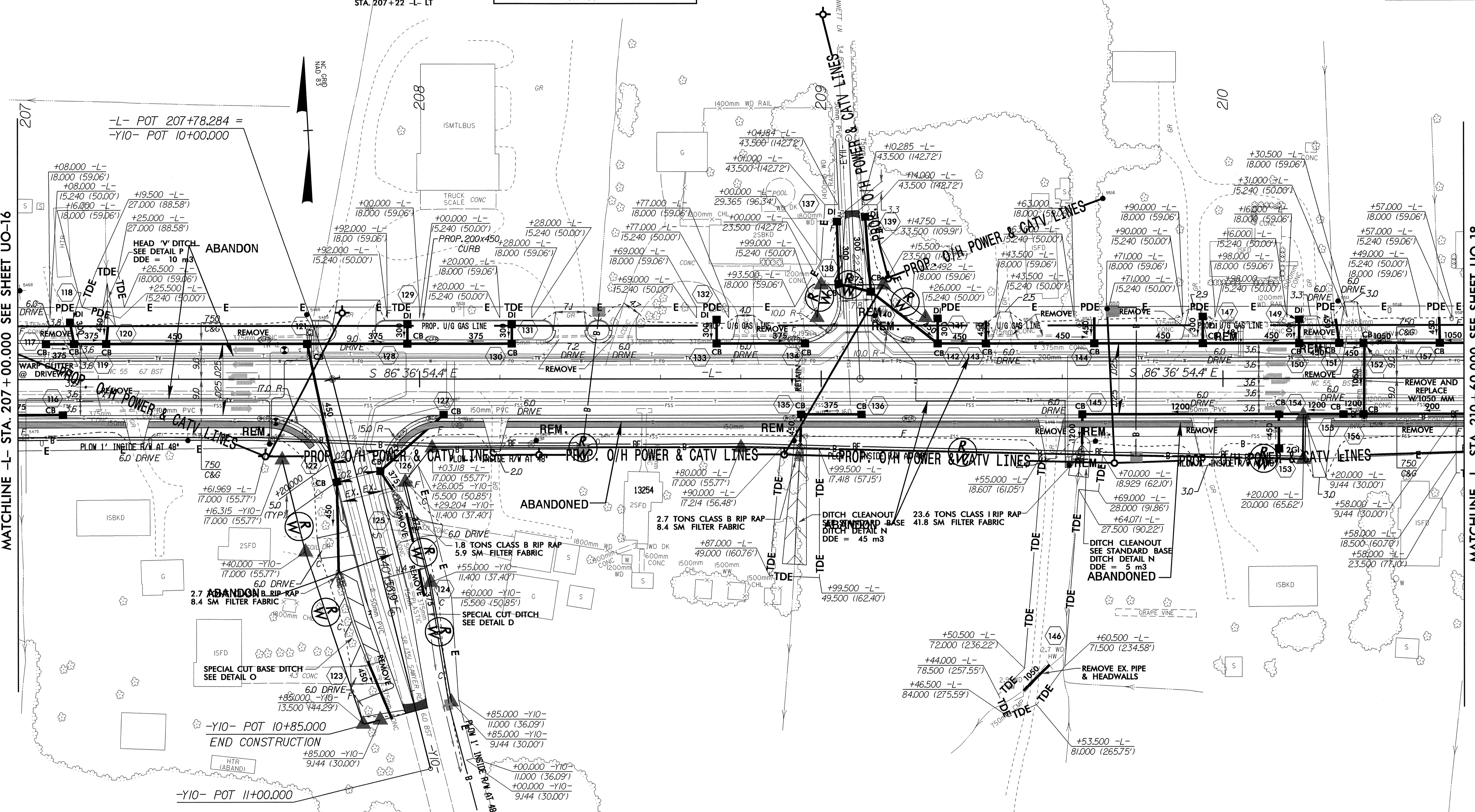
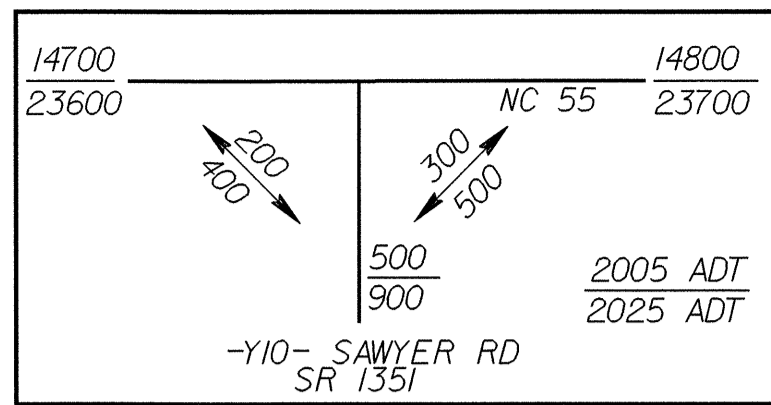
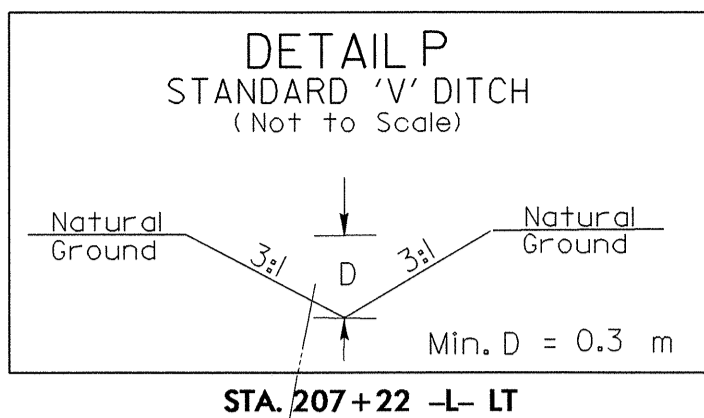


UTILITIES BY OTHERS

NOTE:
ALL PROPOSED UTILITY WORK
SHOWN ON THIS SHEET WILL
BE DONE BY OTHERS



SEE SHEET NO. 36 FOR -L- PROFILE
SEE SHEET NO. 43 FOR -Y10- PROFILE
SEE SHEET NO. 2-J FOR -Y10
INTERSECTION DETAIL.

- NOTES:
1. DRIVES IN SHOULDER SECTION, RADIUS = 1.5m @ E.O.P. (UNLESS OTHERWISE NOTED ON PLANS).
 2. ALL DRIVES IN CURB AND GUTTER SECTIONS ARE RADIUS TYPE DRIVEWAYS WITH A 0.9m RADIUS @ FACE OF CURB (UNLESS OTHERWISE NOTED ON PLANS).
 3. CHANNELIZATION RADIUS = 3.095m @ E.O.P. (UNLESS OTHERWISE NOTED ON PLANS).
 4. OFFSET FROM RW TO 200x450 CURB = 0.0m (TYP.)