

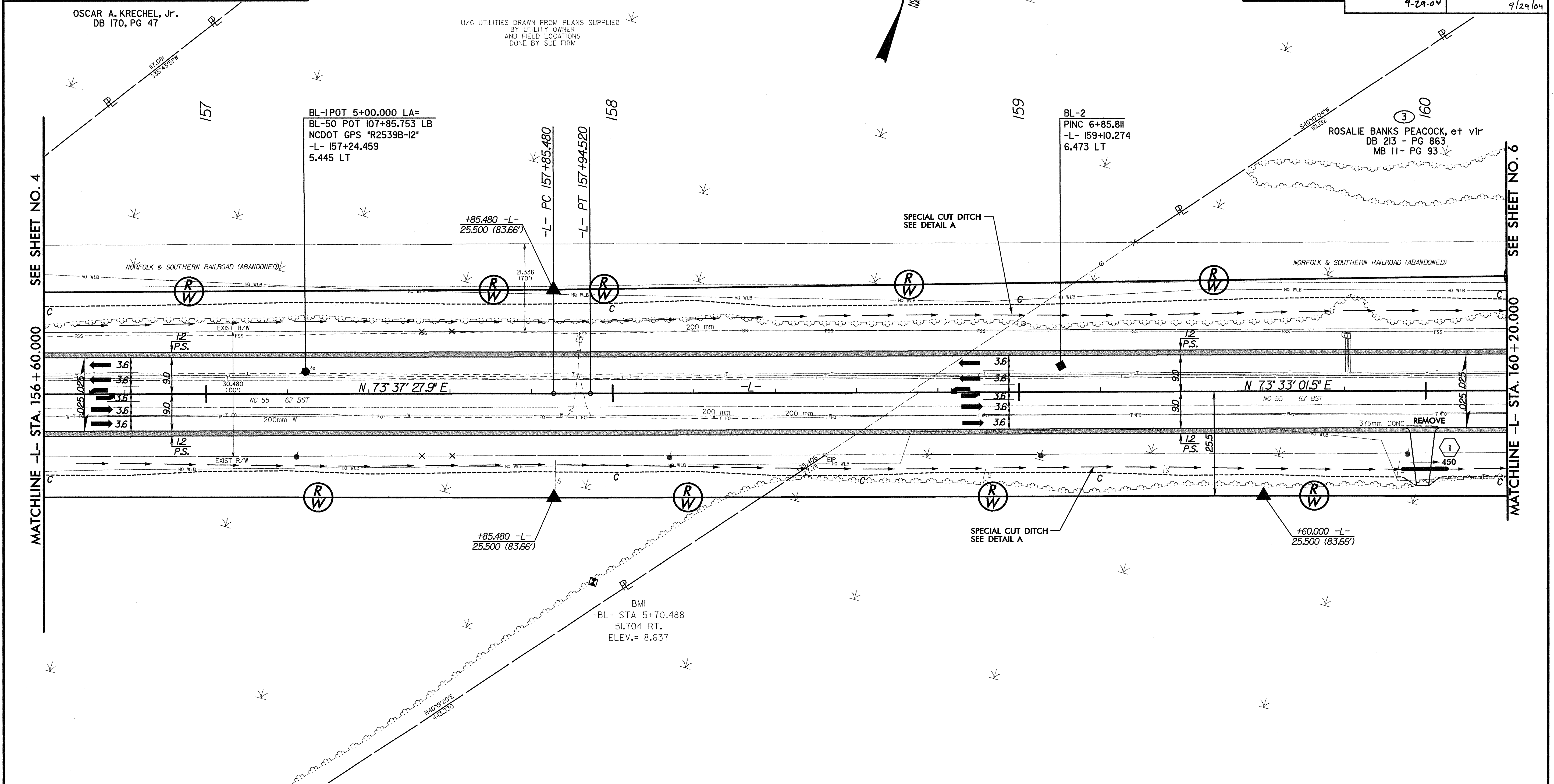
| REVISIONS |
|-----------|
| |
| |
| |

①
WEYERHAEUSER COMPANY
DB 133 - PG 494

GREENHORNE & O'MARA, INC.
5565 CENTERVIEW DRIVE, SUITE 107
RALEIGH, NORTH CAROLINA 27606
(919) 851-1919

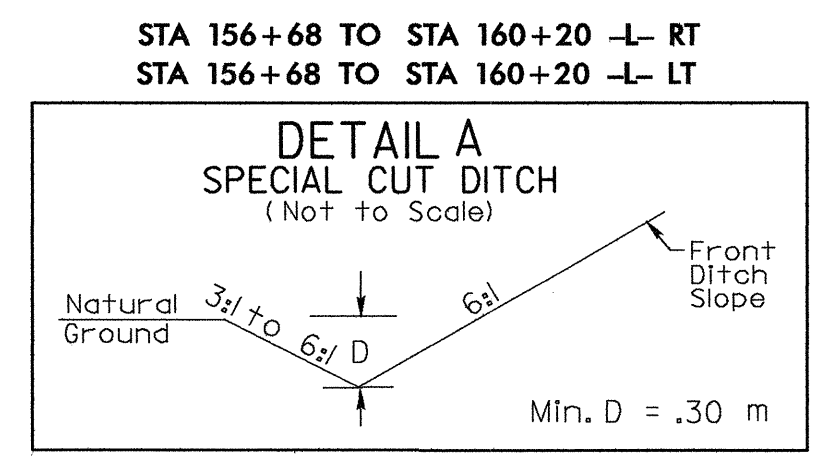
| | |
|--|---|
| PROJECT REFERENCE NO. R-2539C | SHEET NO. 5 |
| R/W SHEET NO. | |
| ROADWAY DESIGN ENGINEER NORTH CAROLINA PROFESSIONAL SEAL 18505 C. KEENER | HYDRAULICS ENGINEER NORTH CAROLINA PROFESSIONAL SEAL 24451 STACEY H. BALLEW |
| CONST. REV. | |
| R/W REV. | |

9-29-06 9/29/04



①
WEYERHAEUSER COMPANY
DB 133 - PG 494

-L-
PI Sta 157+90.000
 $\Delta = 0^{\circ} 04' 26.4''$ (LT)
L = 9.039
T = 4.520
R = 7000.000
S.E. = N C



②
GEORGE R. BRINSON, ET UX
DB 303 - PG 766
PC A - SLIDE 87-4

SEE SHEET NO. 29 FOR -L- PROFILE

NOTES:
1. DRIVES IN SHOULDER SECTION, RADIUS = 1.5m @ E.O.P. (UNLESS OTHERWISE NOTED ON PLANS).