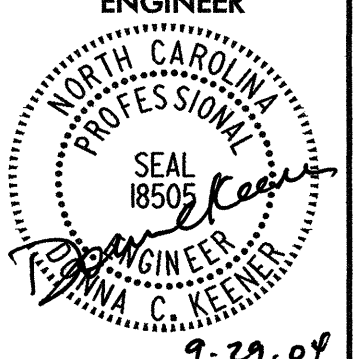
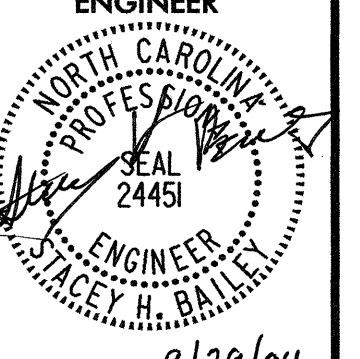


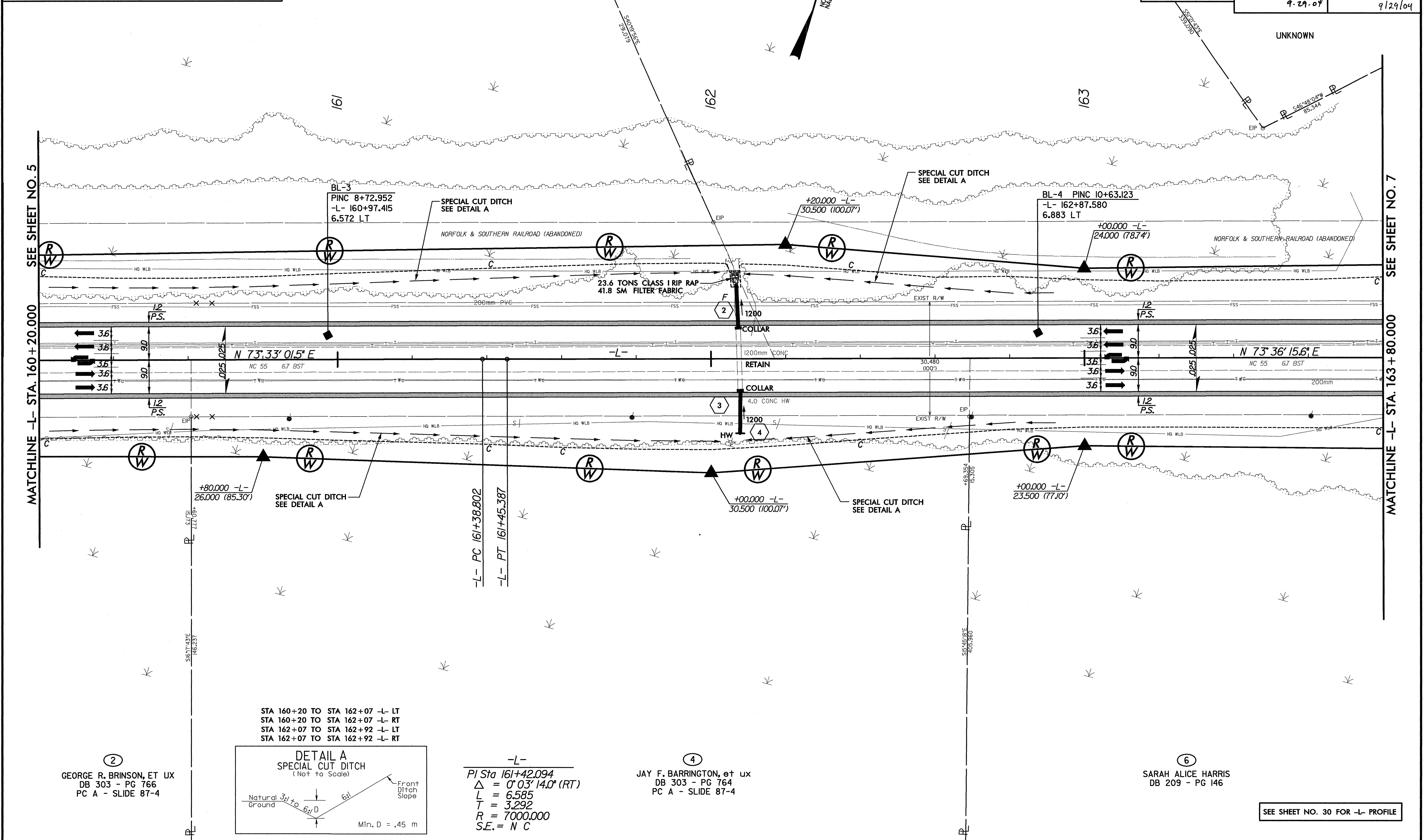
REVISIONS

③
 ROSALIE BANKS PEACOCK, et vir
 DB 213 - PG 863
 MB 11 - PG 93

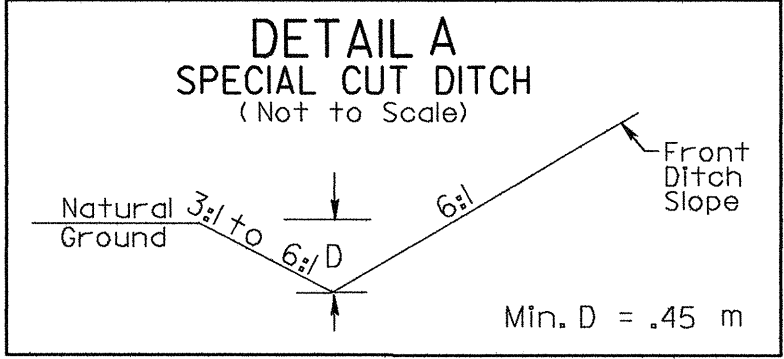
GREENHORNE & O'MARA, INC.
 5565 CENTERVIEW DRIVE, SUITE 107
 RALEIGH, NORTH CAROLINA 27606
 (919) 851-1919

⑤
 JEANNETTE BANKS HUDSON, et vir
 DB 213 - PG 853
 MB 11 - PG 93

PROJECT REFERENCE NO. R-2539C		SHEET NO. 6	
R/W SHEET NO.			
ROADWAY DESIGN ENGINEER		HYDRAULICS ENGINEER	
 ANNA C. KEENER 9-29-04		 STACEY H. BAILEY 9/29/04	
CONST. REV.			
R/W REV.			



②
 GEORGE R. BRINSON, ET UX
 DB 303 - PG 766
 PC A - SLIDE 87-4



-L-
 PI Sta 161+42.094
 $\Delta = 0^{\circ} 03' 14.0''$ (RT)
 L = 6.585
 T = 3.292
 R = 7000.000
 S.E. = N C

④
 JAY F. BARRINGTON, et ux
 DB 303 - PG 764
 PC A - SLIDE 87-4

⑥
 SARAH ALICE HARRIS
 DB 209 - PG 146

SEE SHEET NO. 30 FOR -L- PROFILE