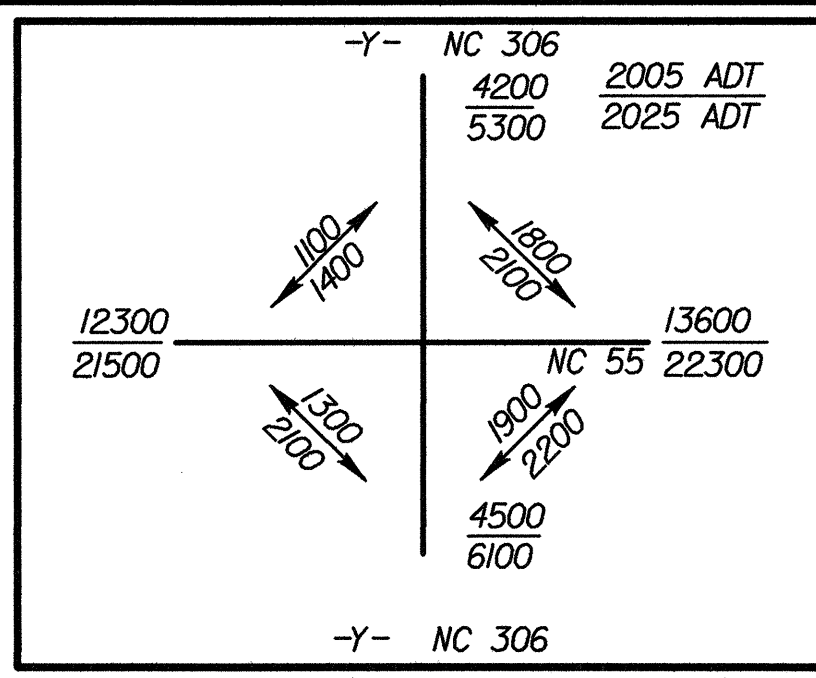
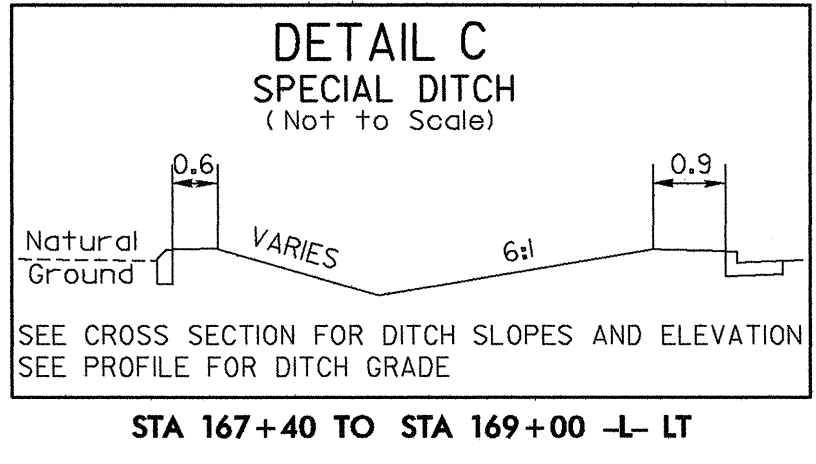


REVISIONS	

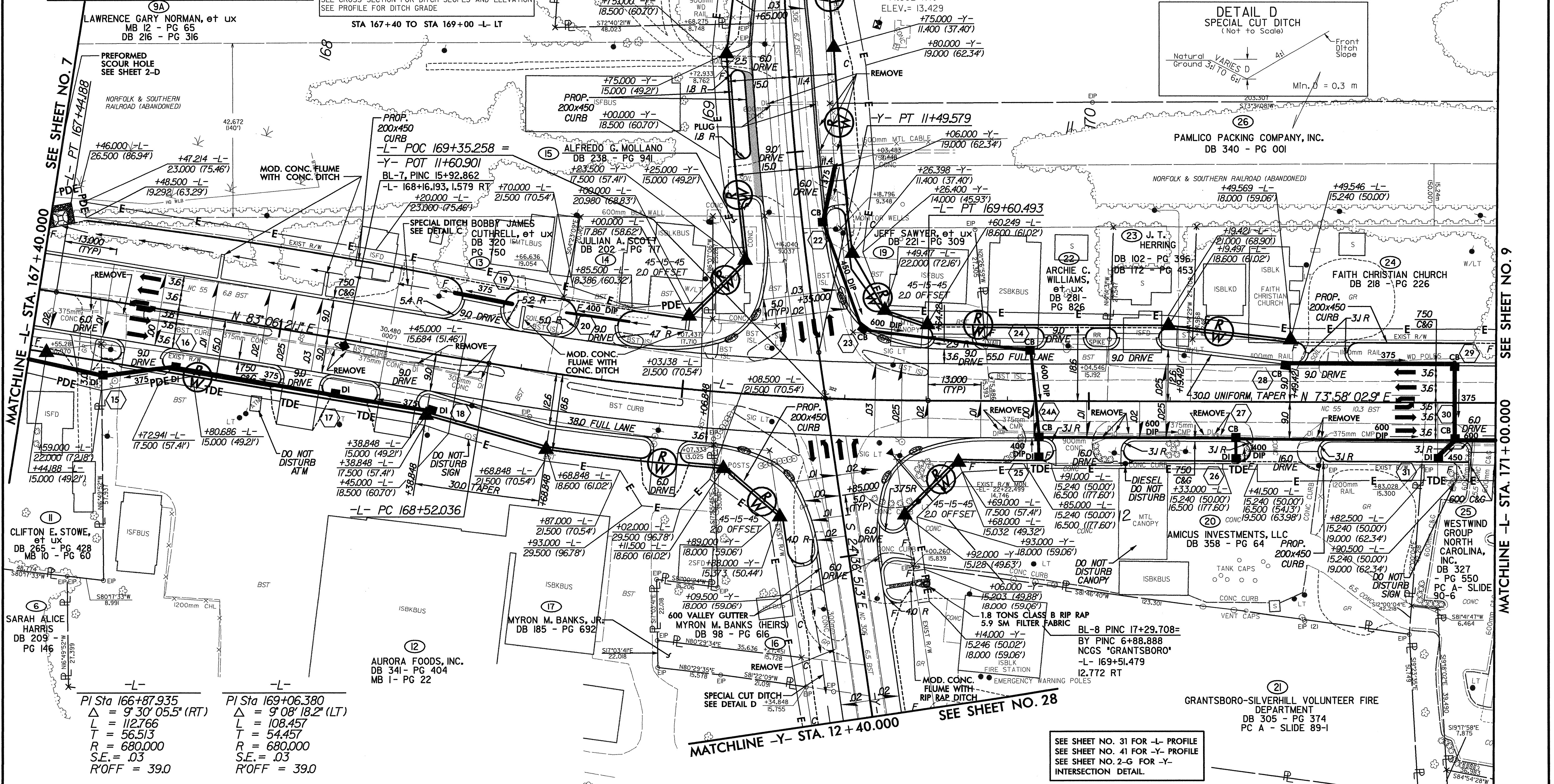


- NOTES:
1. DRIVES IN SHOULDER SECTION, RADIUS = 1.5m @ E.O.P. (UNLESS OTHERWISE NOTED ON PLANS).
 2. ALL DRIVES IN CURB AND GUTTER SECTIONS ARE RADIUS TYPE DRIVEWAYS WITH A 0.9m RADIUS @ FACE OF CURB (UNLESS OTHERWISE NOTED ON PLANS).
 3. CHANNELIZATION RADIUS = 2.975m @ E.O.P. (UNLESS OTHERWISE NOTED ON PLANS).
 4. OFFSET FROM RW TO 200x450 CURB = 0.0m (TYP).
 5. OFFSET FROM E.O.P. TO 200x450 CURB = 1.8m (TYP).



	PROJECT REFERENCE NO.	R-2539C	SHEET NO.	8
	R/W SHEET NO.			
	ROADWAY DESIGN ENGINEER			
	HYDRAULICS ENGINEER			
CONST. REV.				
R/W REV.				

GREENHORNE & O'MARA, INC.
 5565 CENTERVIEW DRIVE, SUITE 107
 RALEIGH, NORTH CAROLINA 27606
 (919) 851-1919



Station	Delta	L	T	R	S.E.	R'OFF
PI Sta 166+87.935	9° 30' 05.5" (RT)	112766	56.513	680.000	.03	39.0
PI Sta 169+06.380	9° 08' 18.2" (LT)	108457	54.457	680.000	.03	39.0

SEE SHEET NO. 31 FOR -L- PROFILE
 SEE SHEET NO. 41 FOR -Y- PROFILE
 SEE SHEET NO. 2-G FOR -Y- INTERSECTION DETAIL.