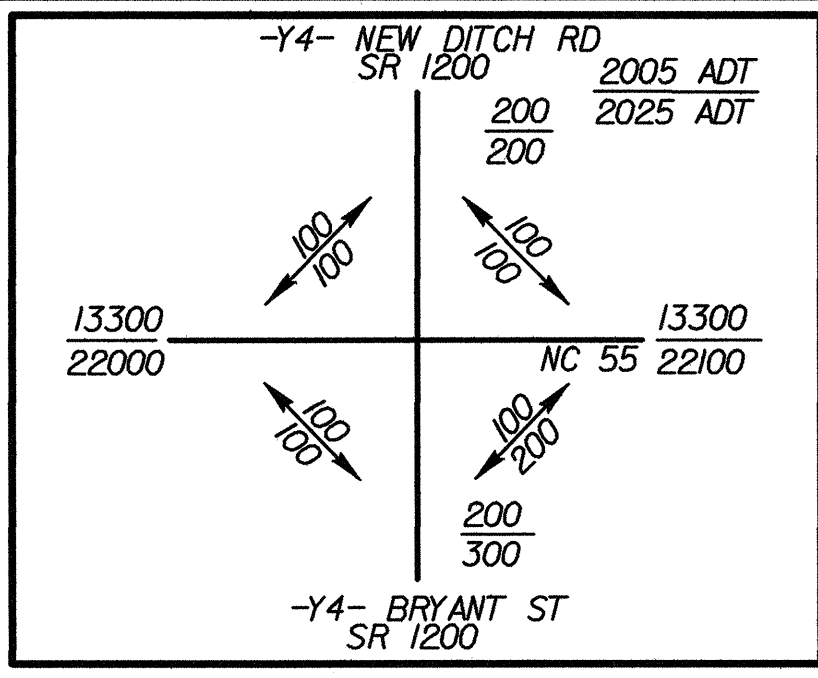
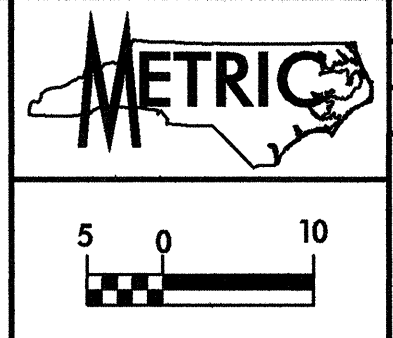


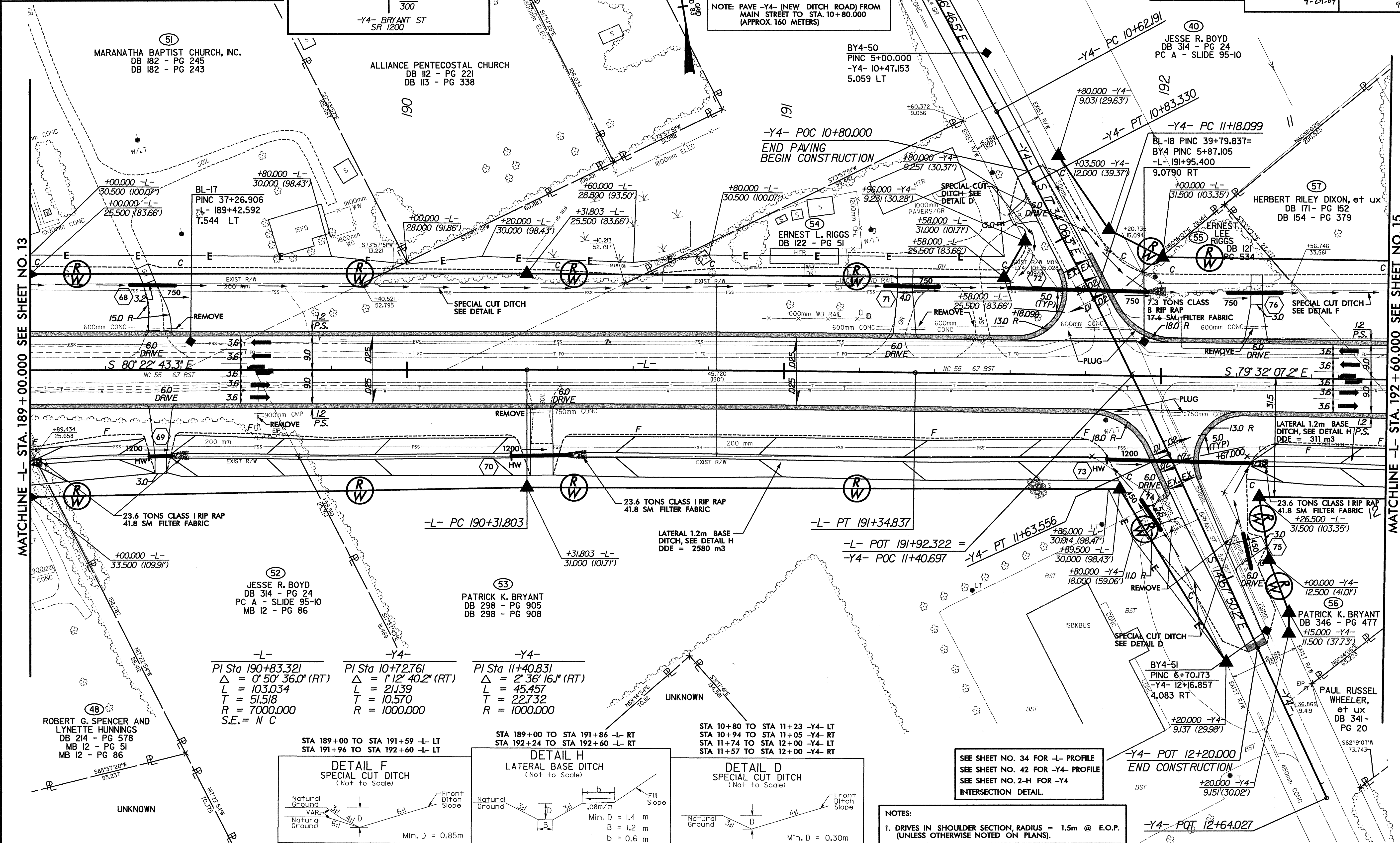
REVISIONS



G&G GREENHORNE & O'MARA, INC.
 5565 CENTERVIEW DRIVE, SUITE 107
 RALEIGH, NORTH CAROLINA 27606
 (919) 851-1919



PROJECT REFERENCE NO. R-2539C	SHEET NO. 14
R/W SHEET NO.	
ROADWAY DESIGN ENGINEER NORTH CAROLINA PROFESSIONAL SEAL 9-29-04	HYDRAULICS ENGINEER NORTH CAROLINA PROFESSIONAL SEAL 9/29/04
CONST. REV.	
R/W REV.	



MATCHLINE -L- STA. 189+00.000 SEE SHEET NO. 13

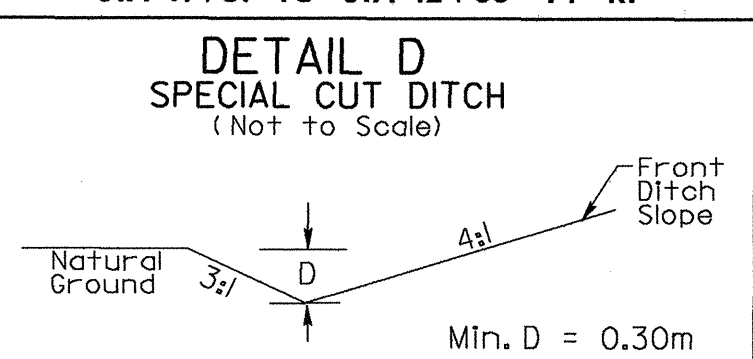
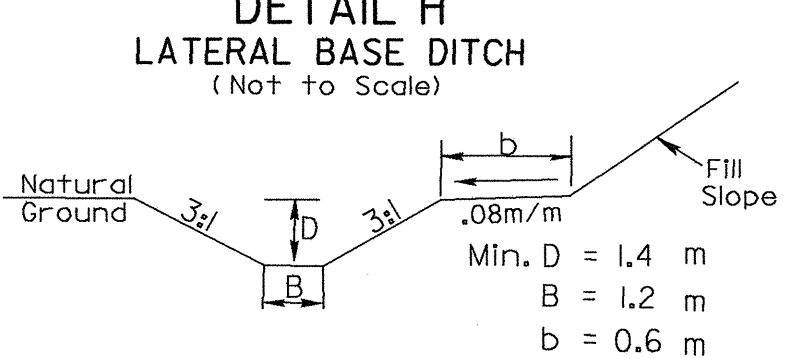
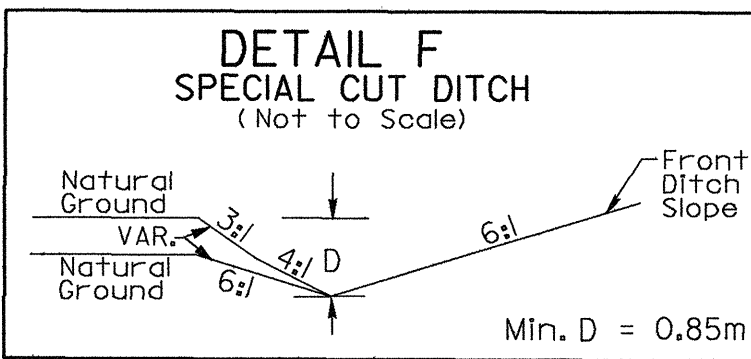
MATCHLINE -L- STA. 192+60.000 SEE SHEET NO. 15

-L-	-Y4-	-Y4-
PI Sta 190+83.321	PI Sta 10+72.761	PI Sta 11+40.831
$\Delta = 0^\circ 50' 36.0''$ (RT)	$\Delta = 1^\circ 12' 40.2''$ (RT)	$\Delta = 2^\circ 36' 16.1''$ (RT)
L = 103.034	L = 21.139	L = 45.457
T = 51.518	T = 10.570	T = 22.732
R = 7000.000	R = 1000.000	R = 1000.000
S.E. = N C		

STA 189+00 TO STA 191+59 -L- LT
 STA 191+96 TO STA 192+60 -L- LT

STA 189+00 TO STA 191+86 -L- RT
 STA 192+24 TO STA 192+60 -L- RT

STA 10+80 TO STA 11+23 -Y4- LT
 STA 10+94 TO STA 11+05 -Y4- RT
 STA 11+74 TO STA 12+00 -Y4- LT
 STA 11+57 TO STA 12+00 -Y4- RT



SEE SHEET NO. 34 FOR -L- PROFILE
 SEE SHEET NO. 42 FOR -Y4- PROFILE
 SEE SHEET NO. 2-H FOR -Y4- INTERSECTION DETAIL.

NOTES:
 1. DRIVES IN SHOULDER SECTION, RADIUS = 1.5m @ E.O.P. (UNLESS OTHERWISE NOTED ON PLANS).

ROBERT G. SPENCER AND
 LYNETTE HUNNINGS
 DB 214 - PG 578
 MB 12 - PG 51
 MB 12 - PG 86

JESSE R. BOYD
 DB 314 - PG 24
 PC A - SLIDE 95-10
 MB 12 - PG 86

PATRICK K. BRYANT
 DB 298 - PG 905
 DB 298 - PG 908

BY4-51
 PINC 6+70.173
 -Y4- 12+16.857
 4.083 RT

PATRICK K. BRYANT
 DB 346 - PG 477
 +15.000 -Y4-
 11.500 (37.73')

PAUL RUSSEL
 WHEELER,
 et ux
 DB 341 - PG 20

NOTE: PAVE -Y4- (NEW DITCH ROAD) FROM
 MAIN STREET TO STA. 10+80.000
 (APPROX. 160 METERS)

END PAVING
 BEGIN CONSTRUCTION

END CONSTRUCTION