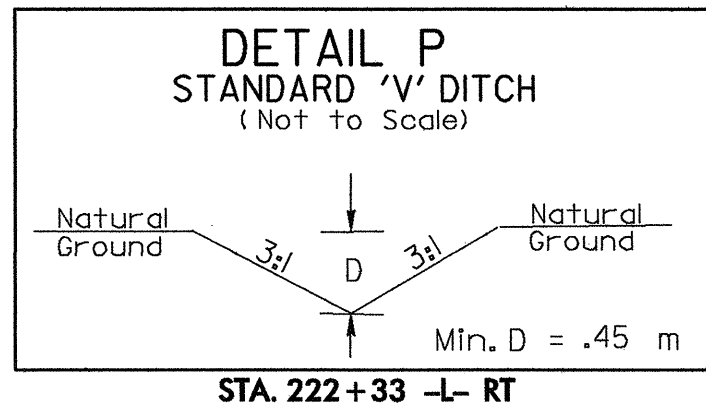


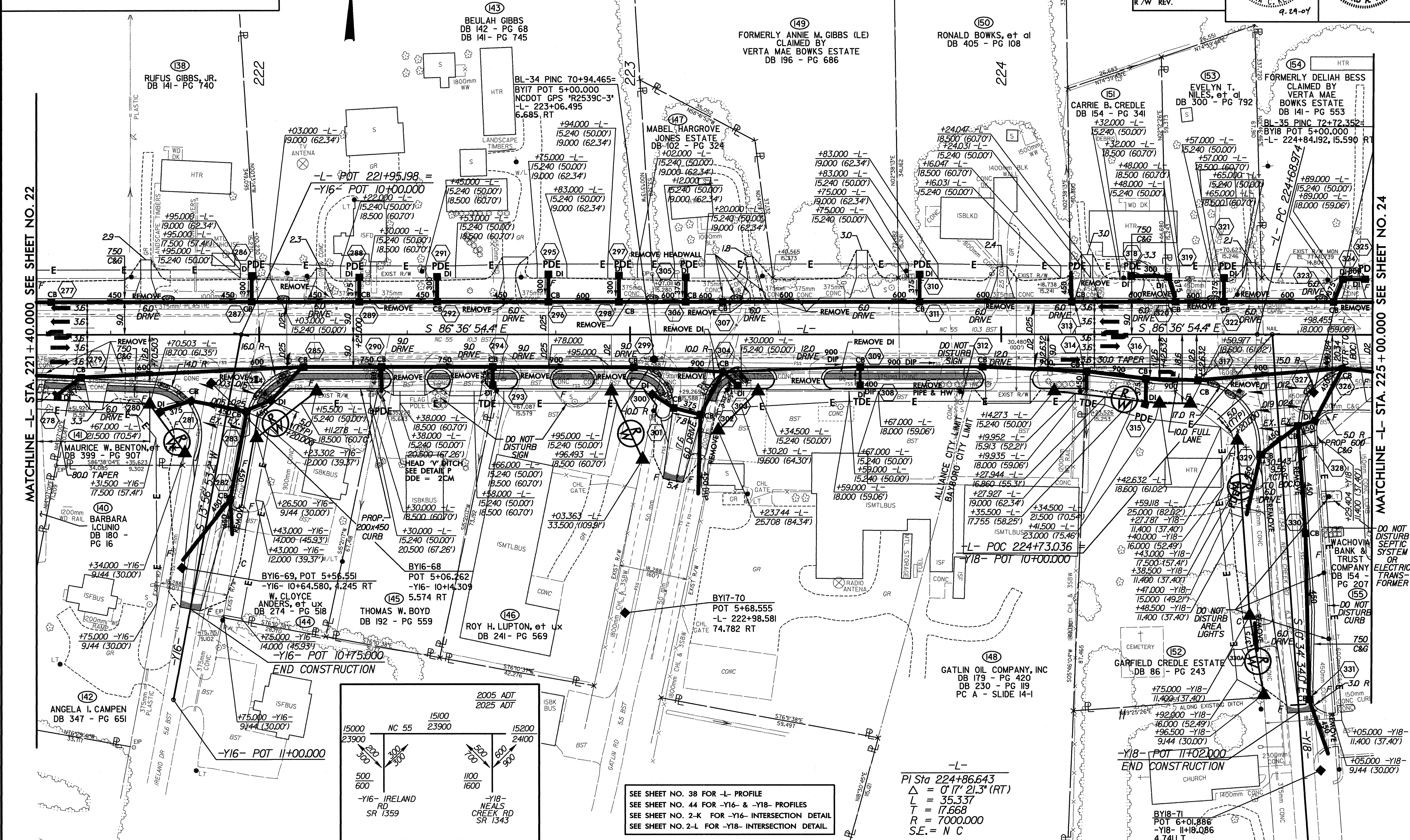
REVISIONS



- NOTES:
1. DRIVES IN SHOULDER SECTION, RADIUS = 1.5m @ E.O.P. (UNLESS OTHERWISE NOTED ON PLANS).
 2. ALL DRIVES IN CURB AND GUTTER SECTIONS ARE RADIUS TYPE DRIVEWAYS WITH A 0.9m RADIUS @ FACE OF CURB (UNLESS OTHERWISE NOTED ON PLANS).
 3. CHANNELIZATION RADIUS = 3.095m @ E.O.P. (UNLESS OTHERWISE NOTED ON PLANS).
 4. OFFSET FROM RW TO 200x450 CURB = 0.0m (TYP.)

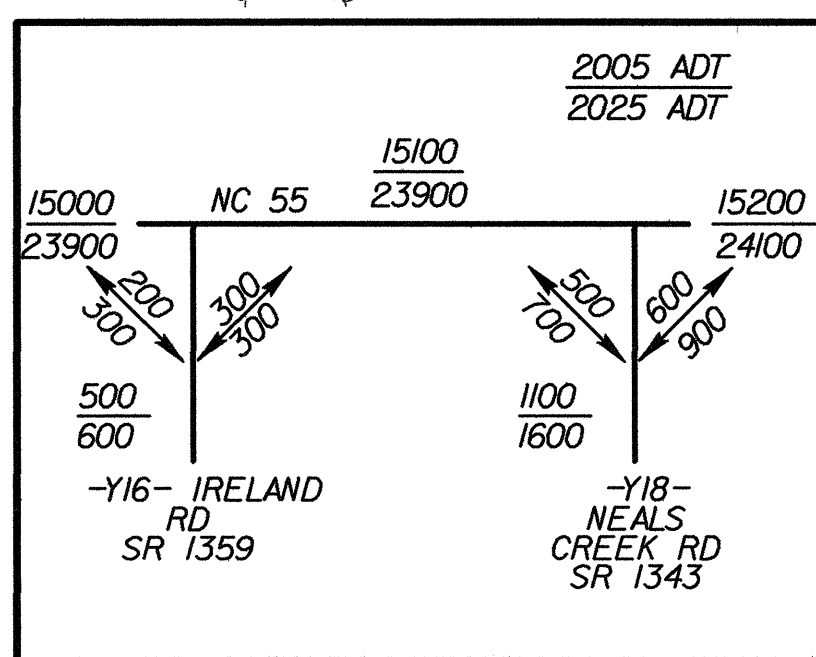
GREENHORNE & O'MARA, INC.
5565 CENTERVIEW DRIVE, SUITE 107
RALEIGH, NORTH CAROLINA 27606
(919) 851-1919

PROJECT REFERENCE NO. R-2539C		SHEET NO. 23	
R/W SHEET NO.			
ROADWAY DESIGN ENGINEER NORTH CAROLINA PROFESSIONAL SEAL 9.29.04		HYDRAULICS ENGINEER NORTH CAROLINA PROFESSIONAL SEAL 9.29.04	
CONST. REV.			
R/W REV.			



MATCHLINE -L- STA. 221+40.000 SEE SHEET NO. 22

MATCHLINE -L- STA. 225+00.000 SEE SHEET NO. 24



SEE SHEET NO. 38 FOR -L- PROFILE
SEE SHEET NO. 44 FOR -Y16- & -Y18- PROFILES
SEE SHEET NO. 2-K FOR -Y16- INTERSECTION DETAIL
SEE SHEET NO. 2-L FOR -Y18- INTERSECTION DETAIL

-L-
PI Sta 224+86.643
 $\Delta = 0' 17' 21.3''$ (RT)
L = 35.337
T = 17.668
R = 7000.000
S.E. = N C

BY18-71
POT 6+01.886
-Y18- 11+18.086
4.741 LT