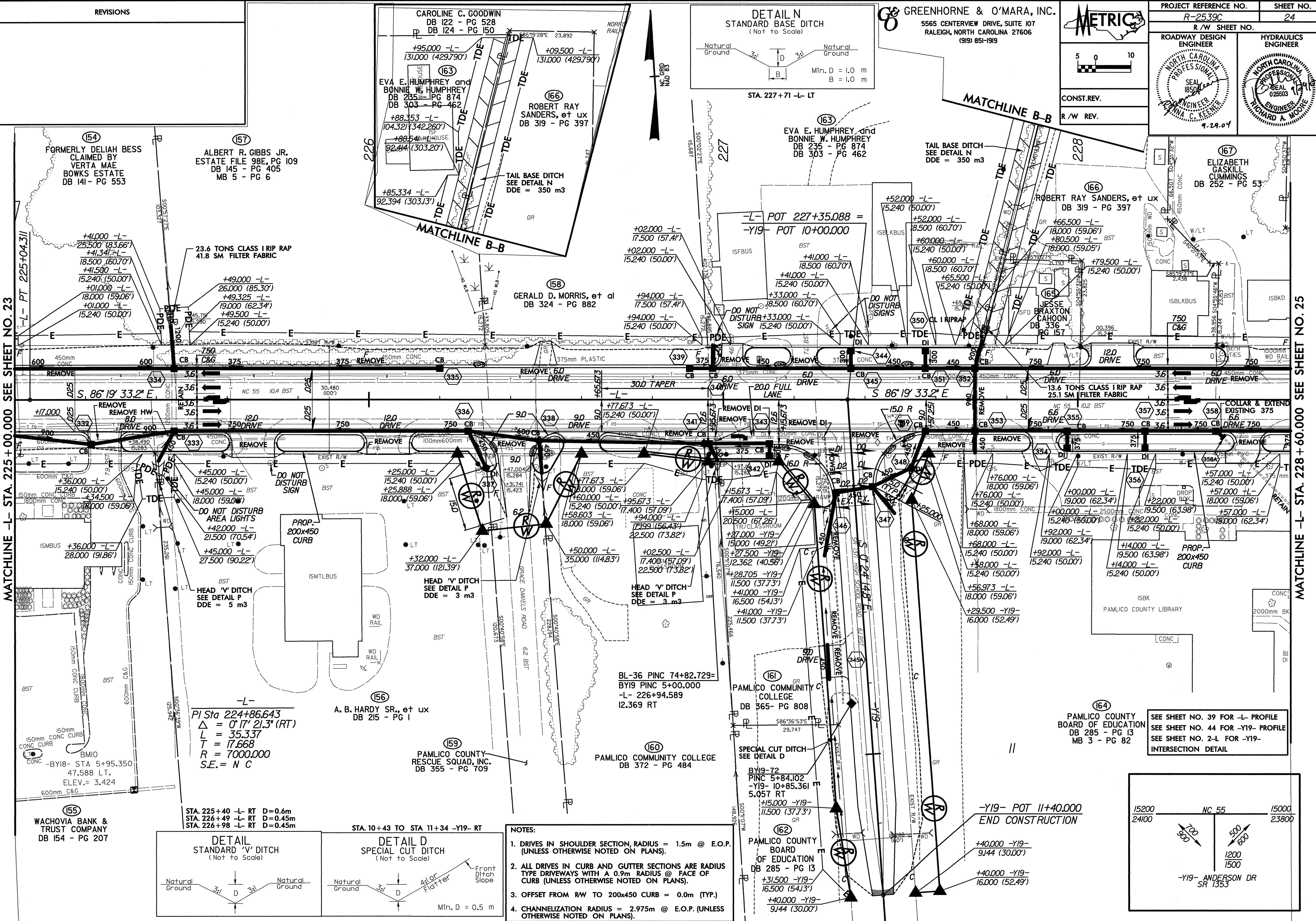


MATCHLINE -L- STA. 225 + 00.000 SEE SHEET NO. 23

MATCHLINE -L- STA. 228 + 60.000 SEE SHEET NO. 25



(154) FORMERLY DELIAH BESS CLAIMED BY VERTA MAE BOWKS ESTATE DB 141 - PG 553

(157) ALBERT R. GIBBS JR. ESTATE FILE 98E, PG 109 DB 145 - PG 405 MB 5 - PG 6

CAROLINE C. GOODWIN DB 122 - PG 528 DB 124 - PG 150
EVA E. HUMPHREY and BONNIE W. HUMPHREY DB 235 - PG 874 DB 303 - PG 462
ROBERT RAY SANDERS, et ux DB 319 - PG 397
TAIL BASE DITCH SEE DETAIL N DDE = 350 m3

(158) GERALD D. MORRIS, et al DB 324 - PG 882

(163) EVA E. HUMPHREY and BONNIE W. HUMPHREY DB 235 - PG 874 DB 303 - PG 462

(166) ROBERT RAY SANDERS, et ux DB 319 - PG 397

(167) ELIZABETH GASKILL CUMMINGS DB 252 - PG 53

+41.000 -L- 25.500 (83.66')
+41.341 -L- 18.500 (60.70')
+41.500 -L- 15.240 (50.00')
+01.000 -L- 18.000 (59.06')
+01.000 -L- 15.240 (50.00')

+49.000 -L- 26.000 (85.30')
+49.325 -L- 19.000 (62.34')
+49.500 -L- 15.240 (50.00')

+02.000 -L- 17.500 (57.41')
+02.000 -L- 15.240 (50.00')

+94.000 -L- 17.500 (57.41')
+94.000 -L- 15.240 (50.00')

-L- POT 227+35.088 =
-Y19- POT 10+00.000
+41.000 -L- 18.500 (60.70')
+41.000 -L- 15.240 (50.00')

+52.000 -L- 15.240 (50.00')
+52.000 -L- 18.500 (60.70')
+60.000 -L- 15.240 (50.00')

+66.500 -L- 18.000 (59.06')
+80.500 -L- 18.000 (59.06')

+7.000 -L- 15.240 (50.00')

+45.000 -L- 15.240 (50.00')
+45.000 -L- 18.000 (59.06')

+25.000 -L- 15.240 (50.00')
+25.888 -L- 18.000 (59.06')

+17.673 -L- 15.240 (50.00')

+15.673 -L- 17.400 (57.09')

+15.000 -L- 15.000 (49.21')

+76.000 -L- 18.000 (59.06')

+40.000 -L- 19.000 (62.34')

+57.000 -L- 15.240 (50.00')

+36.000 -L- 28.000 (91.86')

+45.000 -L- 27.500 (90.22')

+32.000 -L- 37.000 (121.39')

+50.000 -L- 35.000 (114.83')

+02.500 -L- 22.500 (73.82')

+27.000 -Y19- 11.500 (37.73')

+68.000 -L- 18.000 (59.06')

+92.000 -L- 19.000 (62.34')

+4.000 -L- 15.240 (50.00')

(155) WACHOVIA BANK & TRUST COMPANY DB 154 - PG 207

(156) A. B. HARDY SR., et ux DB 215 - PG 1
PI Sta 224+86.643
 $\Delta = 0' 17'' 21.3'' (RT)$
L = 35.337
T = 17.668
R = 7000.000
S.E. = N C

(159) PAMLICO COUNTY RESCUE SQUAD, INC. DB 355 - PG 709

(160) PAMLICO COUNTY COLLEGE DB 372 - PG 484

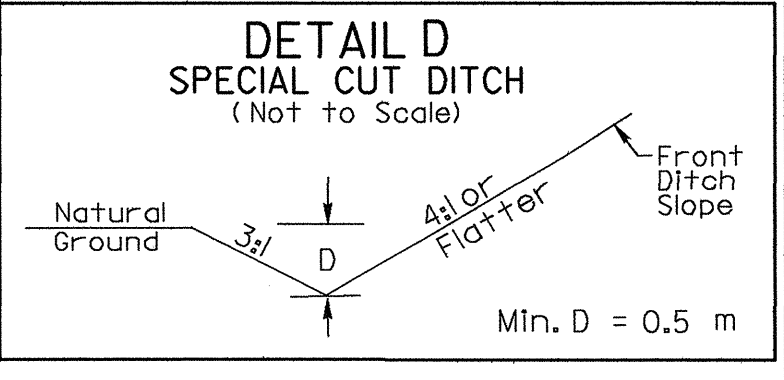
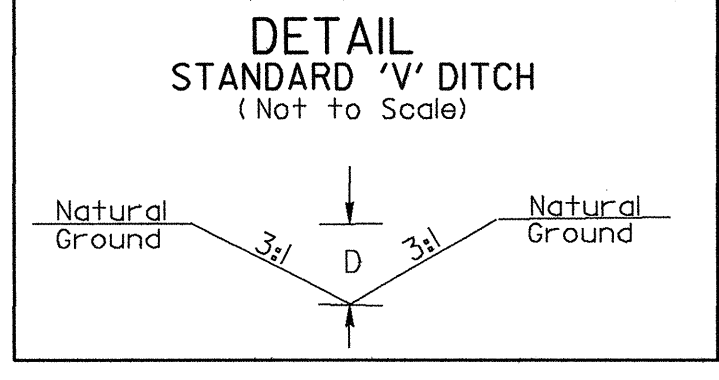
(161) PAMLICO COUNTY COLLEGE DB 365 - PG 808

(162) PAMLICO COUNTY BOARD OF EDUCATION DB 285 - PG 13

(164) PAMLICO COUNTY BOARD OF EDUCATION DB 285 - PG 13 MB 3 - PG 82

STA. 225+40 -L- RT D=0.6m
STA. 226+49 -L- RT D=0.45m
STA. 226+98 -L- RT D=0.45m

STA. 10+43 TO STA. 11+34 -Y19- RT



- NOTES:
1. DRIVES IN SHOULDER SECTION, RADIUS = 1.5m @ E.O.P. (UNLESS OTHERWISE NOTED ON PLANS).
 2. ALL DRIVES IN CURB AND GUTTER SECTIONS ARE RADIUS TYPE DRIVEWAYS WITH A 0.9m RADIUS @ FACE OF CURB (UNLESS OTHERWISE NOTED ON PLANS).
 3. OFFSET FROM RW TO 200x450 CURB = 0.0m (TYP.)
 4. CHANNELIZATION RADIUS = 2.975m @ E.O.P. (UNLESS OTHERWISE NOTED ON PLANS).

SEE SHEET NO. 39 FOR -L- PROFILE
SEE SHEET NO. 44 FOR -Y19- PROFILE
SEE SHEET NO. 2-L FOR -Y19- INTERSECTION DETAIL.

