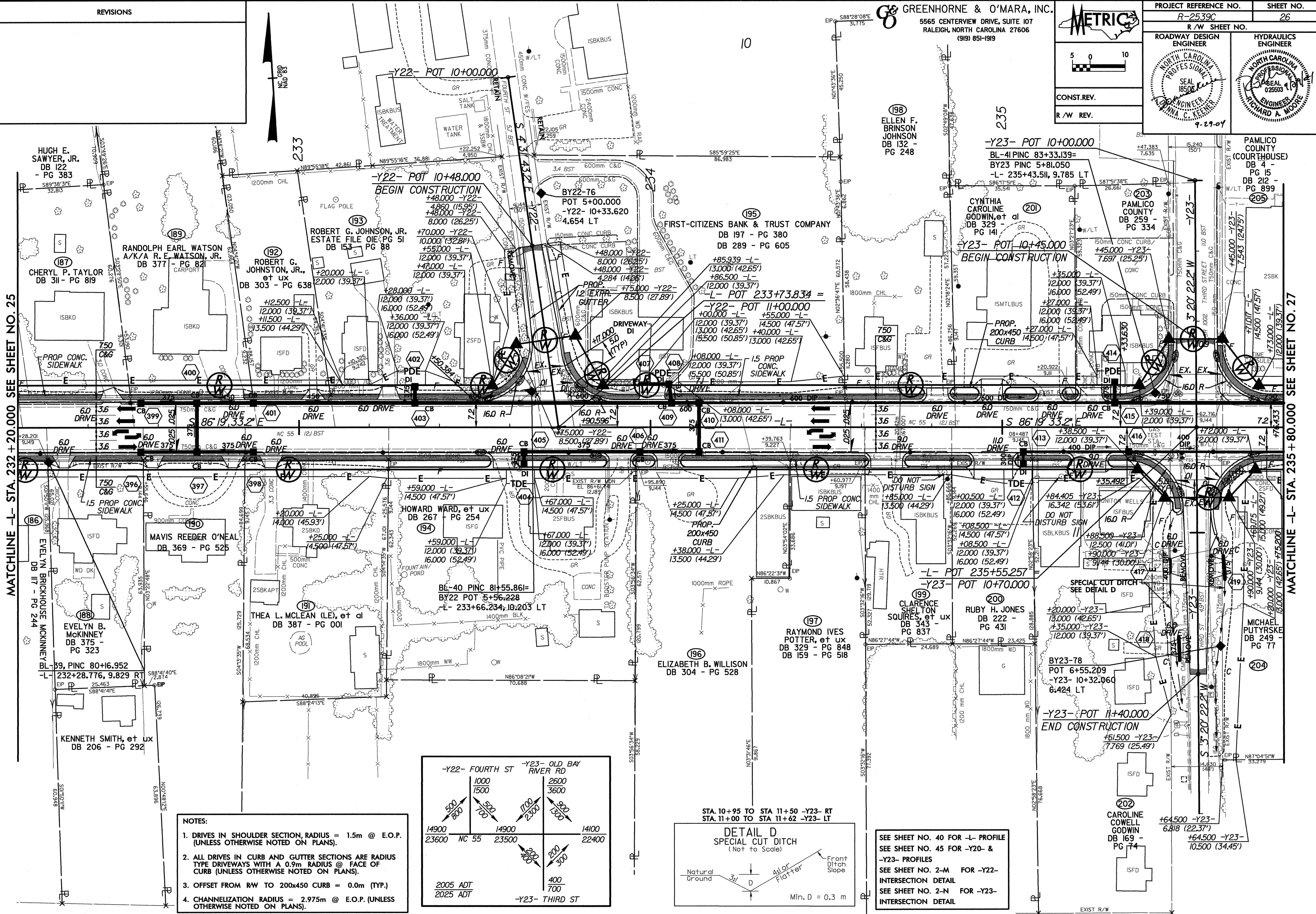
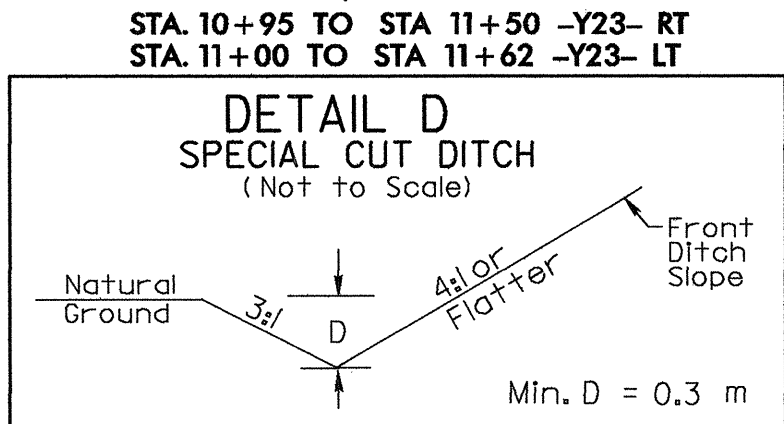
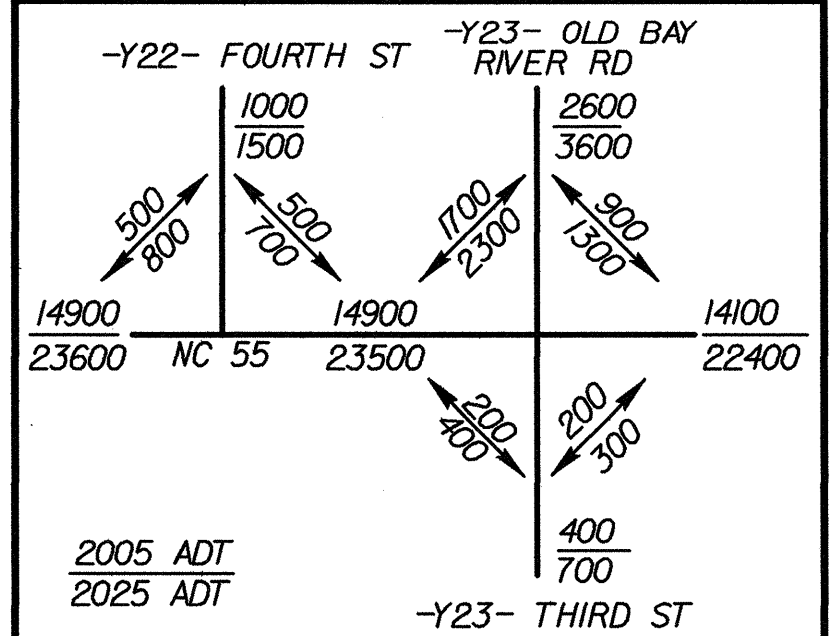


MATCHLINE -L- STA. 232 + 20.000 SEE SHEET NO. 25

MATCHLINE -L- STA. 235 + 80.000 SEE SHEET NO. 27



- NOTES:
1. DRIVES IN SHOULDER SECTION, RADIUS = 1.5m @ E.O.P. (UNLESS OTHERWISE NOTED ON PLANS).
 2. ALL DRIVES IN CURB AND GUTTER SECTIONS ARE RADIUS TYPE DRIVEWAYS WITH A 0.9m RADIUS @ FACE OF CURB (UNLESS OTHERWISE NOTED ON PLANS).
 3. OFFSET FROM RW TO 200x450 CURB = 0.0m (TYP.)
 4. CHANNELIZATION RADIUS = 2.975m @ E.O.P. (UNLESS OTHERWISE NOTED ON PLANS).



SEE SHEET NO. 40 FOR -L- PROFILE
SEE SHEET NO. 45 FOR -Y20- & -Y23- PROFILES
SEE SHEET NO. 2-M FOR -Y22- INTERSECTION DETAIL
SEE SHEET NO. 2-N FOR -Y23- INTERSECTION DETAIL