

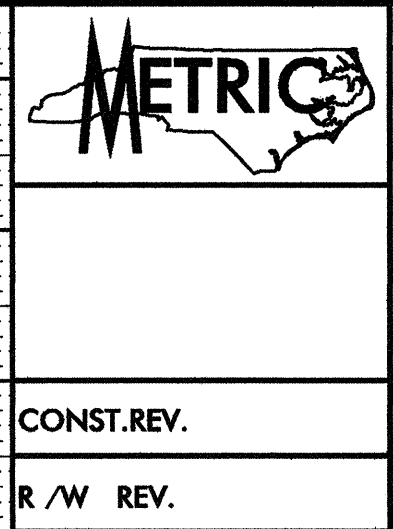
6/19/24

HYDRAULIC DATA

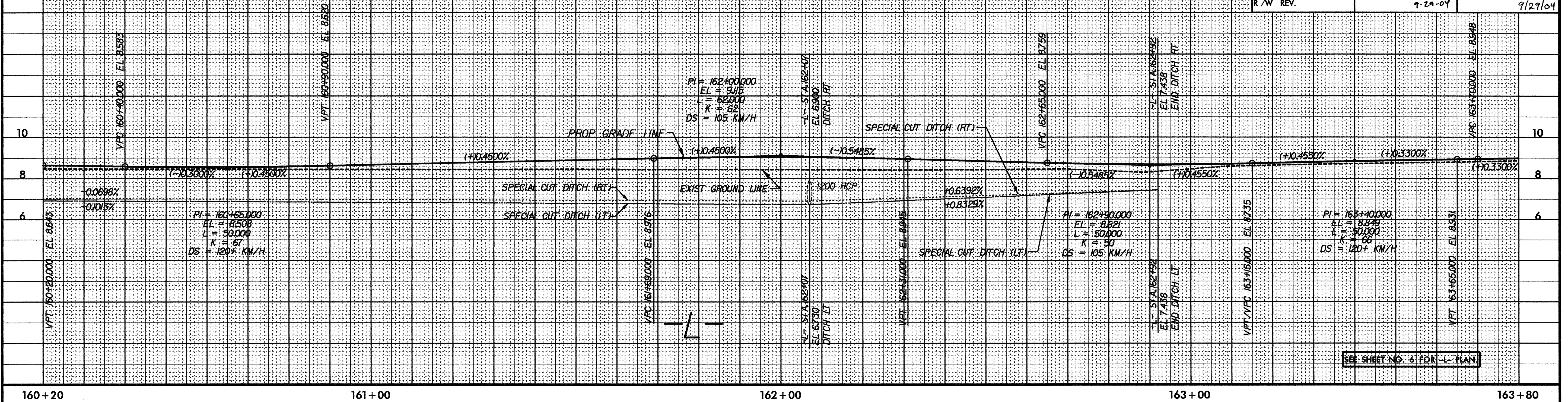
DRAINAGE AREA	= 49 HA
DESIGN FREQUENCY	= 50 YRS
DESIGN DISCHARGE	= 0.75 CWS
DESIGN HW ELEVATION	= 8.62 M
100 YR DISCHARGE	= 0.85 CWS
100 YR ELEVATION	= 8.17 M
OVERTOPPING FREQUENCY	= 470 YRS
OVERTOPPING DISCHARGE	= 1.40 CWS
OVERTOPPING ELEVATION	= 8.68 M

BM#2 EL 10.525
RR SPIKE IN 12" POPLAR
36.844m RT -L STA. 165+02.622

GREENHORNE & O'MARA, INC.
5965 CENTERVIEW DRIVE, SUITE 107
RALEIGH, NORTH CAROLINA 27606
(919) 851-1919



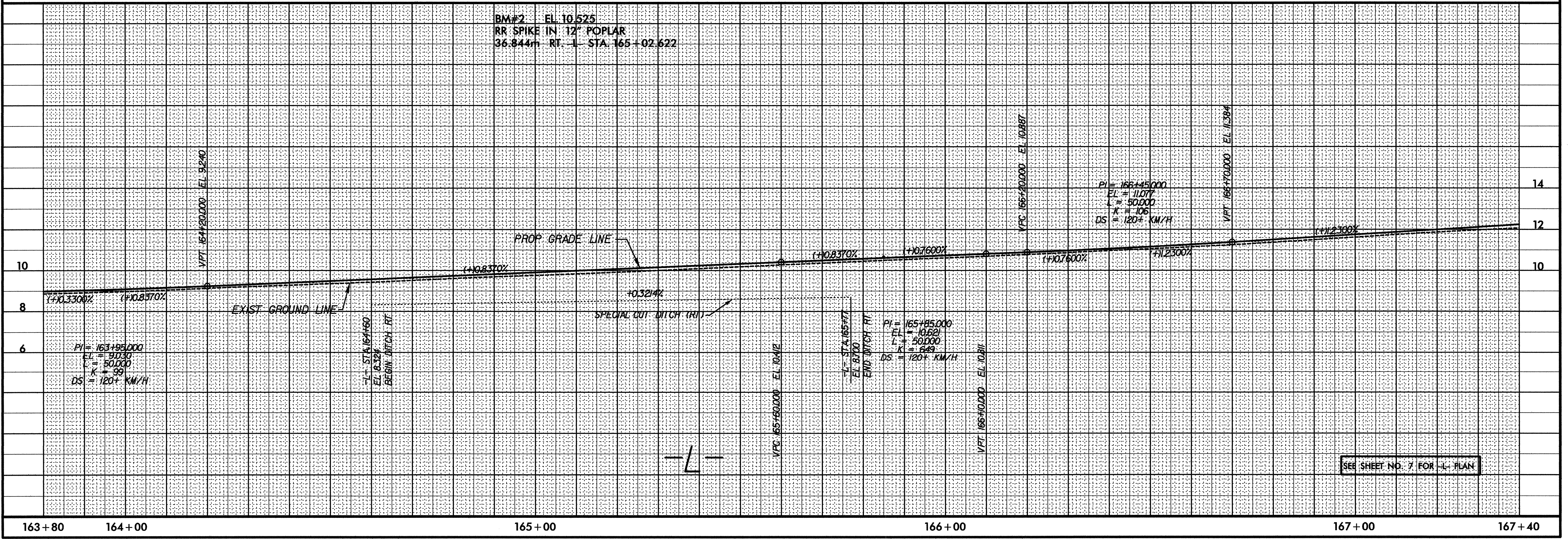
PROJECT REFERENCE NO.	R-2539C	SHEET NO.	30
ROADWAY DESIGN ENGINEER	NORTH CAROLINA PROFESSIONAL SEAL 18804 ENGINEER ANNA C. KEENER		
HYDRAULICS ENGINEER	NORTH CAROLINA PROFESSIONAL SEAL 14451 ENGINEER TRACEY H. BAILLIE		
CONST. REV.			
R/W REV.	9-29-04		9/29/04



SEE SHEET NO. 6 FOR -L- PLAN

6/19/24

BM#2 EL 10.525
RR SPIKE IN 12" POPLAR
36.844m RT -L STA. 165+02.622



SEE SHEET NO. 7 FOR -L- PLAN