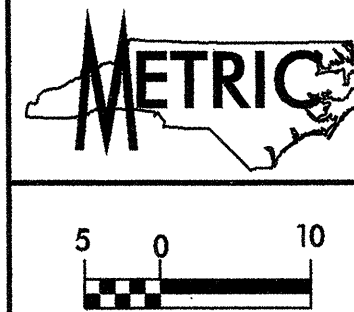


REVISIONS

-L-  
 PI Sta 172+51.886  
 $\Delta = 10' 40' 26.8''$  (LT)  
 L = 171.395  
 T = 85.946  
 R = 920.000  
 S.E. = .03  
 R'OFF = 39.0

-L-  
 PI Sta 174+62.032  
 $\Delta = 10' 16' 30.8''$  (RT)  
 L = 159.609  
 T = 80.019  
 R = 890.000  
 S.E. = .03  
 R'OFF = 39.0

**GREENHORNE & O'MARA, INC.**  
 5565 CENTERVIEW DRIVE, SUITE 107  
 RALEIGH, NORTH CAROLINA 27606  
 (919) 851-1919



PROJECT REFERENCE NO. R-2539C	SHEET NO. 9
R/W SHEET NO.	
ROADWAY DESIGN ENGINEER	HYDRAULICS ENGINEER
<b>PRELIMINARY PLANS</b> DO NOT USE FOR CONSTRUCTION <b>INCOMPLETE PLANS</b> DO NOT USE FOR R/W ACQUISITION	
CONST.REV.	
R/W REV.	

PAMLICO PACKING COMPANY, INC.  
 DB 295 - PG 109  
 DB 306 - PG 5  
 PC A - SLIDE 58-10

NEW LIFE PRAISE AND WORSHIP MINISTRIES, INC.  
 DB 350 PG 498

ROLAND J. WARD, JR., et ux  
 DB 359 - PG 646

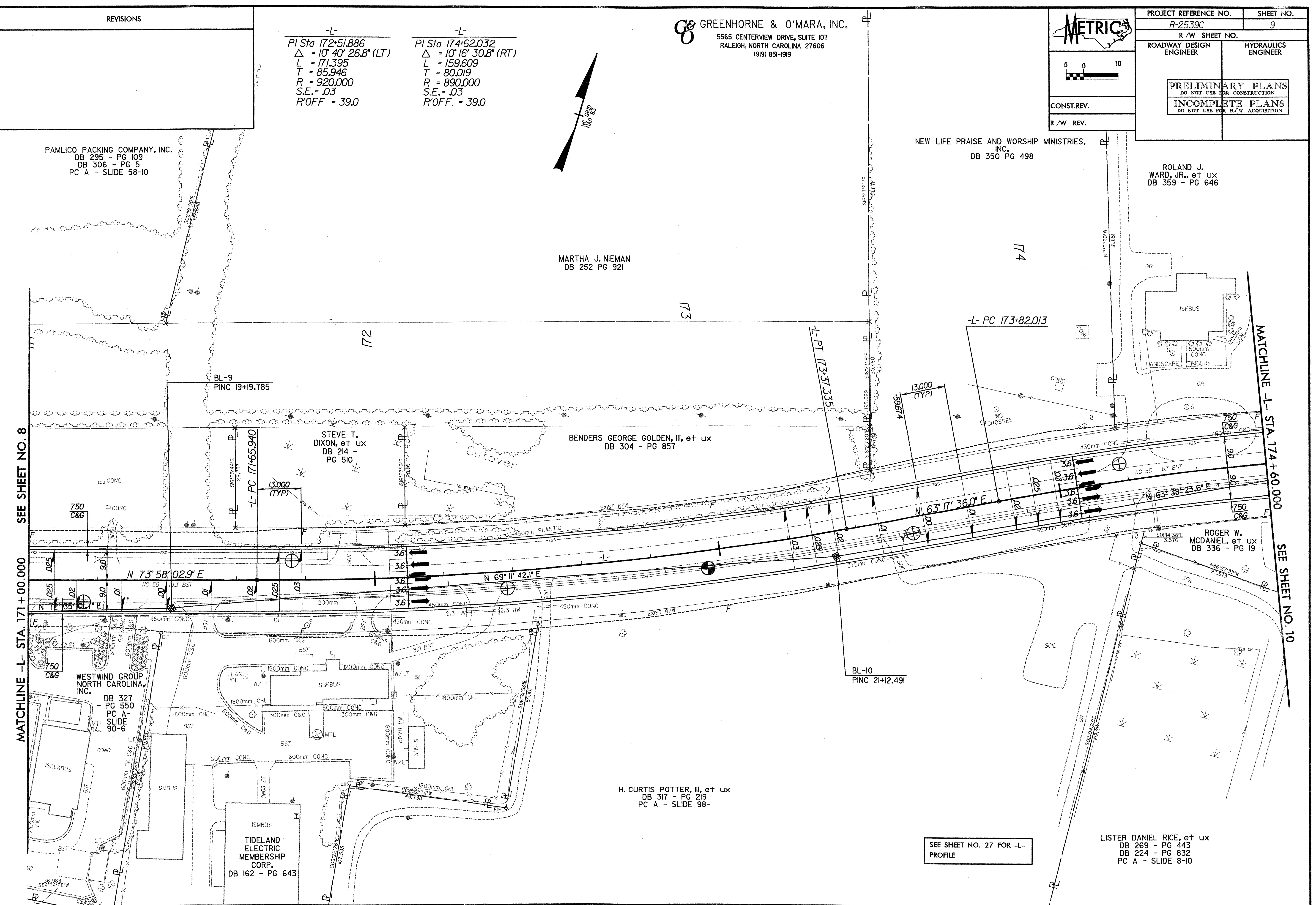
MARTHA J. NIEMAN  
 DB 252 PG 921

SEE SHEET NO. 8

MATCHLINE -L- STA. 171+00.000

MATCHLINE -L- STA. 174+60.000

SEE SHEET NO. 10



WESTWIND GROUP NORTH CAROLINA, INC.  
 DB 327 - PG 550  
 PC A - SLIDE 90-6

TIDELAND ELECTRIC MEMBERSHIP CORP.  
 DB 162 - PG 643

STEVE T. DIXON, et ux  
 DB 214 - PG 510

BENDERS GEORGE GOLDEN, III, et ux  
 DB 304 - PG 857

ROGER W. MCDANIEL, et ux  
 DB 336 - PG 19

H. CURTIS POTTER, III, et ux  
 DB 317 - PG 219  
 PC A - SLIDE 98-

SEE SHEET NO. 27 FOR -L- PROFILE

LISTER DANIEL RICE, et ux  
 DB 269 - PG 443  
 DB 224 - PG 832  
 PC A - SLIDE 8-10