

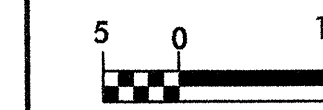
REVISIONS

-Y2-  
 PI Sta 12+49.645  
 $\Delta = 73^{\circ}09'59.3"$  (LT)  
 L = 31.925  
 T = 18.555  
 R = 25.000

-Y2-  
 PI Sta 11+55.525  
 $\Delta = 3^{\circ}00'09.8"$  (RT)  
 L = 87.520  
 T = 43.770  
 R = 1670.000

LOIS MAYO JONES  
DB 264 - PG 531

**GREENHORNE & O'MARA, INC.**  
 5565 CENTERVIEW DRIVE, SUITE 107  
 RALEIGH, NORTH CAROLINA 27606  
 (919) 851-1919



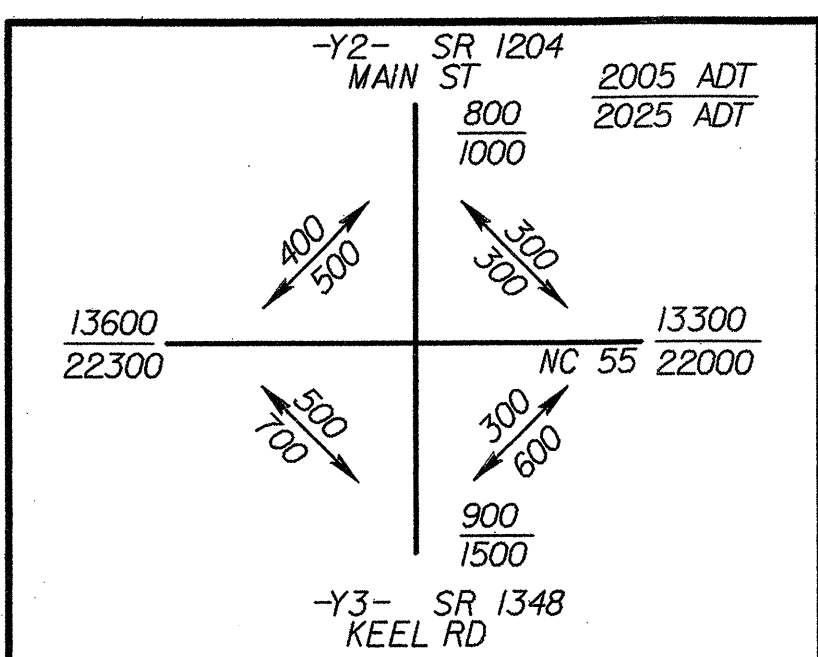
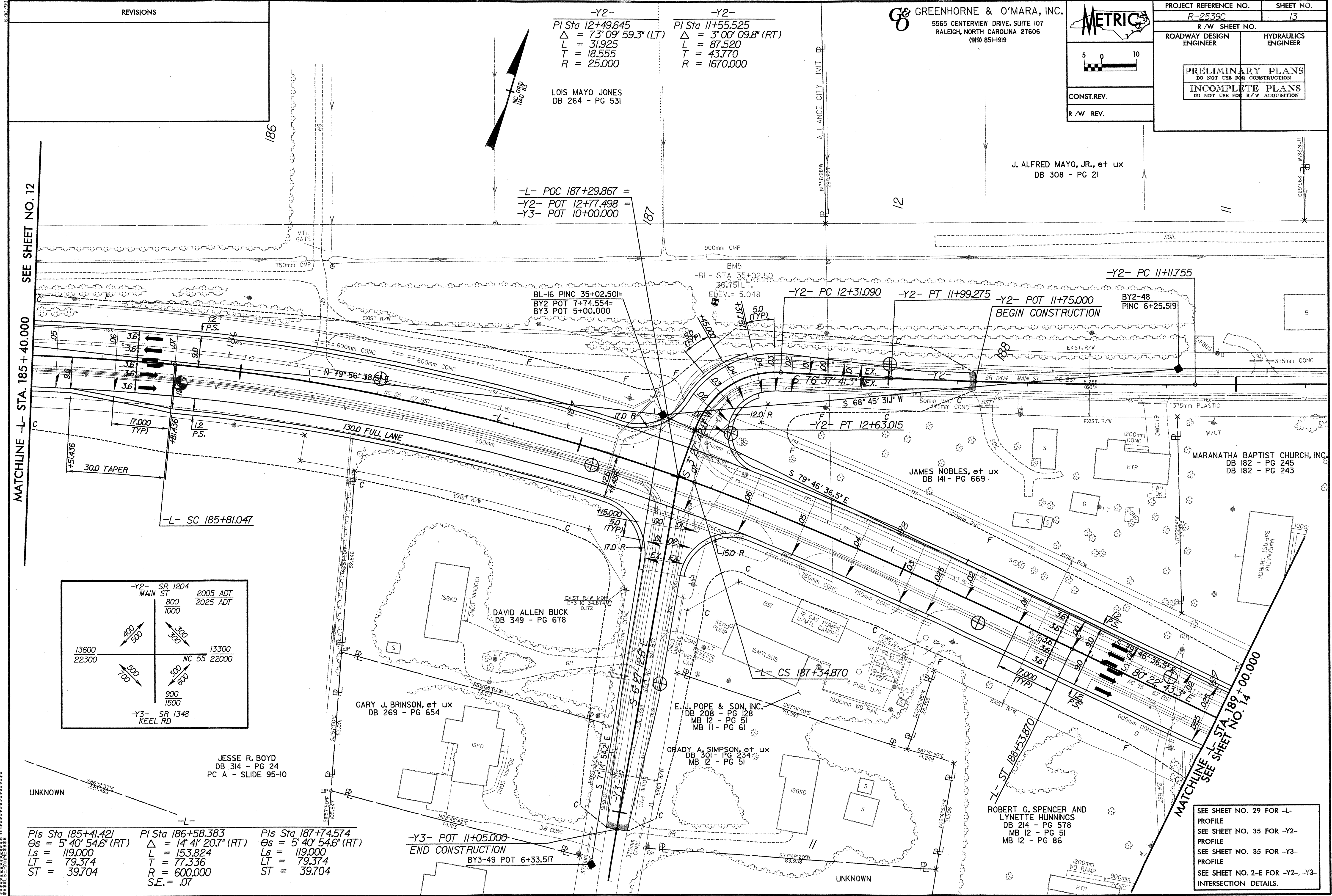
CONST. REV.  
R/W REV.

PROJECT REFERENCE NO. R-2539C	SHEET NO. 13
R/W SHEET NO.	
ROADWAY DESIGN ENGINEER	HYDRAULICS ENGINEER
<b>PRELIMINARY PLANS</b> DO NOT USE FOR CONSTRUCTION <b>INCOMPLETE PLANS</b> DO NOT USE FOR R/W ACQUISITION	

J. ALFRED MAYO, JR., et ux  
DB 308 - PG 21

-L- POC 187+29.867 =  
 -Y2- POT 12+77.498 =  
 -Y3- POT 10+00.000

MATCHLINE -L- STA. 185+40.000  
SEE SHEET NO. 12



JESSE R. BOYD  
DB 314 - PG 24  
PC A - SLIDE 95-10

-L-  
 PIs Sta 185+41.421  
 $\Theta_s = 5^{\circ}40'54.6"$  (RT)  
 Ls = 119.000  
 LT = 79.374  
 ST = 39.704

PI Sta 186+58.383  
 $\Delta = 14^{\circ}41'20.7"$  (RT)  
 L = 153.824  
 T = 77.336  
 R = 600.000  
 S.E. = .07

PIs Sta 187+74.574  
 $\Theta_s = 5^{\circ}40'54.6"$  (RT)  
 Ls = 119.000  
 LT = 79.374  
 ST = 39.704

-Y3- POT 11+05.000  
 END CONSTRUCTION  
 BY3-49 POT 6+33.517

SEE SHEET NO. 29 FOR -L-  
 PROFILE  
 SEE SHEET NO. 35 FOR -Y2-  
 PROFILE  
 SEE SHEET NO. 35 FOR -Y3-  
 PROFILE  
 SEE SHEET NO. 2-E FOR -Y2-, -Y3-  
 INTERSECTION DETAILS.

SYSTEMS