

BM#6 EL. 2.736
RR SPIKE IN 24" GUM
37.986m RT -L STA. 196+64.599

GREENHORNE & O'MARA, INC.
5665 CENTERVIEW DRIVE, SUITE 107
RALEIGH, NORTH CAROLINA 27666
(919) 851-1919



PROJECT REFERENCE NO. R-2539C
SHEET NO. 35
ROADWAY DESIGN ENGINEER
HYDRAULICS ENGINEER

PRELIMINARY PLANS
DO NOT USE FOR CONSTRUCTION
INCOMPLETE PLANS
DO NOT USE FOR R/W ACQUISITION

Soil Sample Test Results

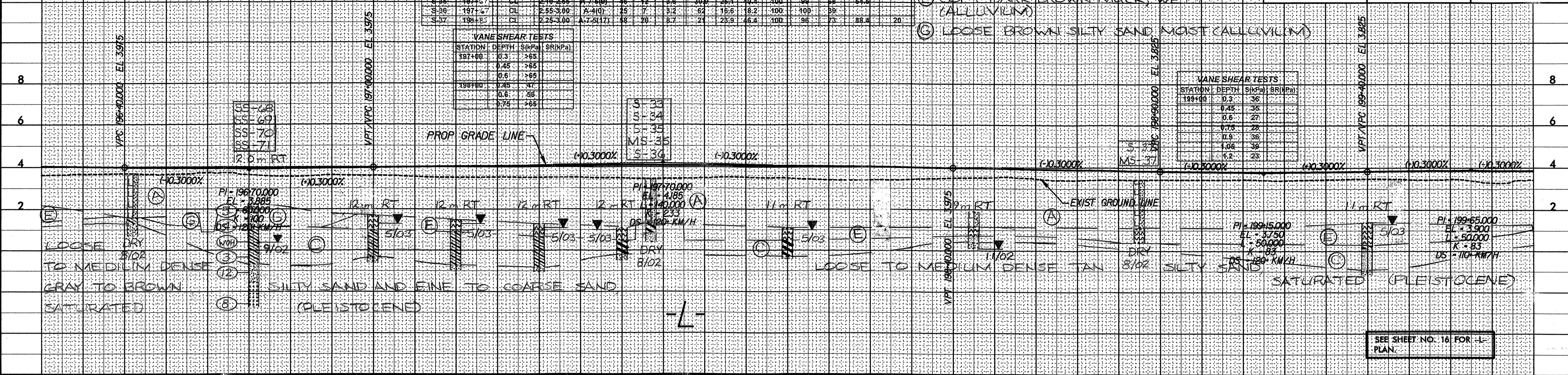
SAMPLE NO.	STATION	OFFSET	DEPTH INTERVAL	ASTHO CLASS.	LI	PL	% BY WEIGHT			% PASSING (SIEVES)		MOISTURE	ORGANIC
							SAND	FINE SAND	SILT	CLAY	#20		
SS-68	196+71	12M RT	1.30-1.05	A-2(40)	21	NP	3	77.8	3.1	100	99	22	
SS-69	196+71	12M RT	1.06-2.85	A-6(1)	32	12	4.8	53.1	22	100	97	50	
SS-70	196+71	12M RT	2.85-3.75	A-2(40)	22	NP	18.3	79.8	4.9	100	94	14	
SS-71	196+71	12M RT	3.75-4.50	A-3(1)	18	NP	85	47.8	11.1	100	82	8	
S-33	197+67	CL	0.39-0.99	A-4(1)	20	2	4.9	62.2	13	100	100	88	
S-34	197+67	CL	0.90-2.10	A-2(40)	20	4	4.8	65.8	11.2	100	100	84	
S-35	197+67	CL	2.10-3.65	A-2(40)	18	12	3.6	30.9	26.4	100	98	64.8	
S-36	197+67	CL	2.55-3.00	A-4(1)	25	7	3.2	62	16.6	100	100	89	
S-37	198+57	CL	2.25-3.00	A-7.5(17)	48	20	8.7	27	23.9	100	96	88.4	20

VANE SHEAR TESTS

STATION	DEPTH	S(kPa)	SR(kPa)
197+00	0.3	>65	
	0.45	>65	
	0.6	>65	
198+00	0.45	47	
	0.6	88	
	0.75	>65	

VANE SHEAR TESTS

STATION	DEPTH	S(kPa)	SR(kPa)
198+00	0.3	36	
	0.45	35	
	0.6	27	
	0.75	22	
	0.9	36	
	1.05	38	
	1.2	28	



SEE SHEET NO. 16 FOR -L- PLAN.

BM#7 EL. 1.726
NAIL IN PP
35.829m RT -L STA. 200+15.429

Soil Sample Test Results

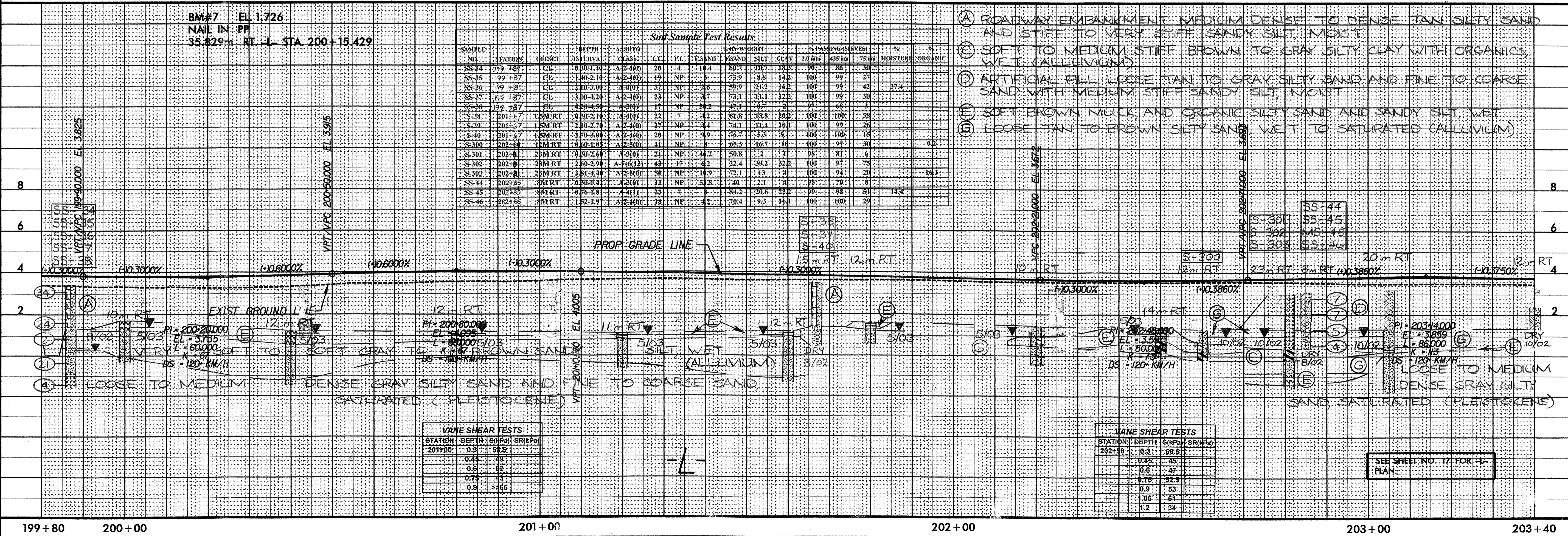
SAMPLE NO.	STATION	OFFSET	DEPTH INTERVAL	ASTHO CLASS.	LI	PL	% BY WEIGHT			% PASSING (SIEVES)		MOISTURE	ORGANIC
							SAND	FINE SAND	SILT	CLAY	#20		
SS-34	199+87	CL	0.30-1.40	A-2(40)	20	4	10.4	60.7	11.7	100	86	30	
SS-35	199+87	CL	1.40-2.10	A-2(40)	19	NP	3	73.9	8.8	100	99	27	
SS-36	199+87	CL	2.10-3.00	A-3(1)	37	NP	2.0	59.9	21.4	100	99	42	17.4
SS-37	199+87	CL	3.00-4.20	A-2(40)	23	NP	3.7	73.1	11.1	100	99	30	
SS-38	199+87	CL	4.20-4.50	A-3(1)	17	NP	3.2	45.1	6.5	100	97	68	3
S-38	201+67	15M RT	0.30-2.10	A-4(1)	22	2	4.2	61.8	13.8	100	100	38	
S-39	201+67	15M RT	2.10-2.70	A-2(40)	27	NP	4.4	74.7	17.4	100	99	20	
S-40	201+67	15M RT	2.70-3.00	A-2(40)	20	NP	9.9	76.2	8.3	100	100	15	
S-300	202+00	12M RT	0.30-1.05	A-2(50)	41	NP	3	65.5	16.3	100	97	30	9.2
S-301	202+01	25M RT	0.30-2.64	A-3(1)	21	NP	44.2	50.8	1.2	100	98	81	6
S-302	202+01	25M RT	2.64-3.99	A-7.6(13)	43	17	6.2	23.4	36.4	100	97	75	
S-303	202+01	25M RT	3.99-4.40	A-2(50)	56	NP	11.2	72.1	1.3	100	94	29	16.3
SS-34	202+05	3M RT	0.30-0.47	A-3(1)	13	NP	2.8	40	23.1	100	95	70	8
SS-35	202+05	3M RT	0.47-1.31	A-4(1)	23	2	4.3	80.2	20.4	100	98	51	11.4
SS-36	202+05	3M RT	1.31-1.97	A-2(40)	18	NP	4.3	79.4	9.3	100	100	29	

VANE SHEAR TESTS

STATION	DEPTH	S(kPa)	SR(kPa)
201+00	0.3	68.2	
	0.45	45	
	0.6	82	
	0.75	45	
	0.9	53	
	1.05	64	
	1.2	34	

VANE SHEAR TESTS

STATION	DEPTH	S(kPa)	SR(kPa)
202+00	0.3	66.5	
	0.45	45	
	0.6	47	
	0.75	52.8	
	0.9	53	
	1.05	64	
	1.2	34	



SEE SHEET NO. 17 FOR -L- PLAN.