

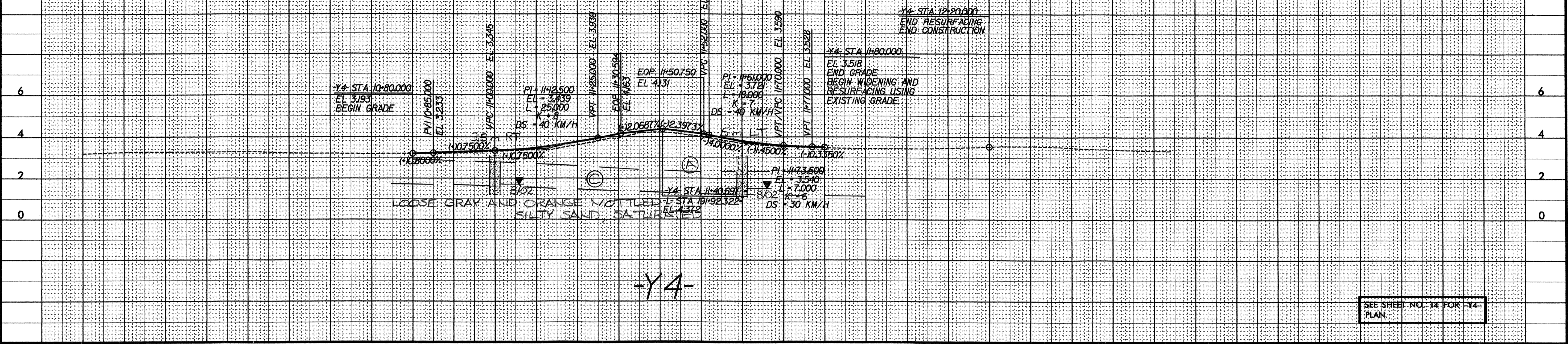
BM#6 EL 2.736
 RR SPIKE IN 24" GUM
 37.986m RT -L STA 196+64.699

GREENHORNE & O'MARA, INC.
 5565 CENTERVIEW DRIVE, SUITE 107
 RALEIGH, NORTH CAROLINA 27606
 (919) 851-1919



| | |
|--|---------------------|
| PROJECT REFERENCE NO. R-2539C | SHEET NO. 42 |
| ROADWAY DESIGN ENGINEER | HYDRAULICS ENGINEER |
| PRELIMINARY PLANS DO NOT USE FOR CONSTRUCTION INCOMPLETE PLANS DO NOT USE FOR R/W ACQUISITION | |
| CONST. REV. | |
| R /W REV. | |

(A) ROADWAY EMBANKMENT LOOSE BROWN SILTY SAND, MOIST
 (C) SOFT BROWN TO GRAY FINE SANDY SILT, MOIST TO WET (PLEISTOCENE)

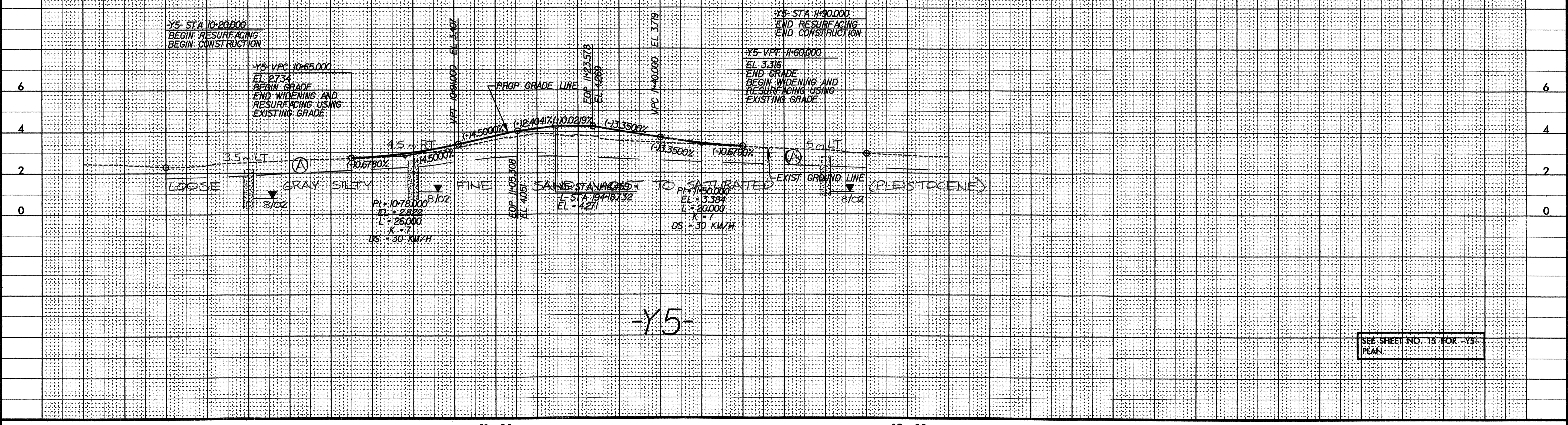


-Y4-

SEE SHEET NO. 14 FOR -Y4- PLAN

BM#6 EL 2.736
 RR SPIKE IN 24" GUM
 37.986m RT -L STA 196+64.699

(A) ROADWAY EMBANKMENT LOOSE BROWN TO GRAY SILTY SAND, MOIST



-Y5-

SEE SHEET NO. 15 FOR -Y5- PLAN