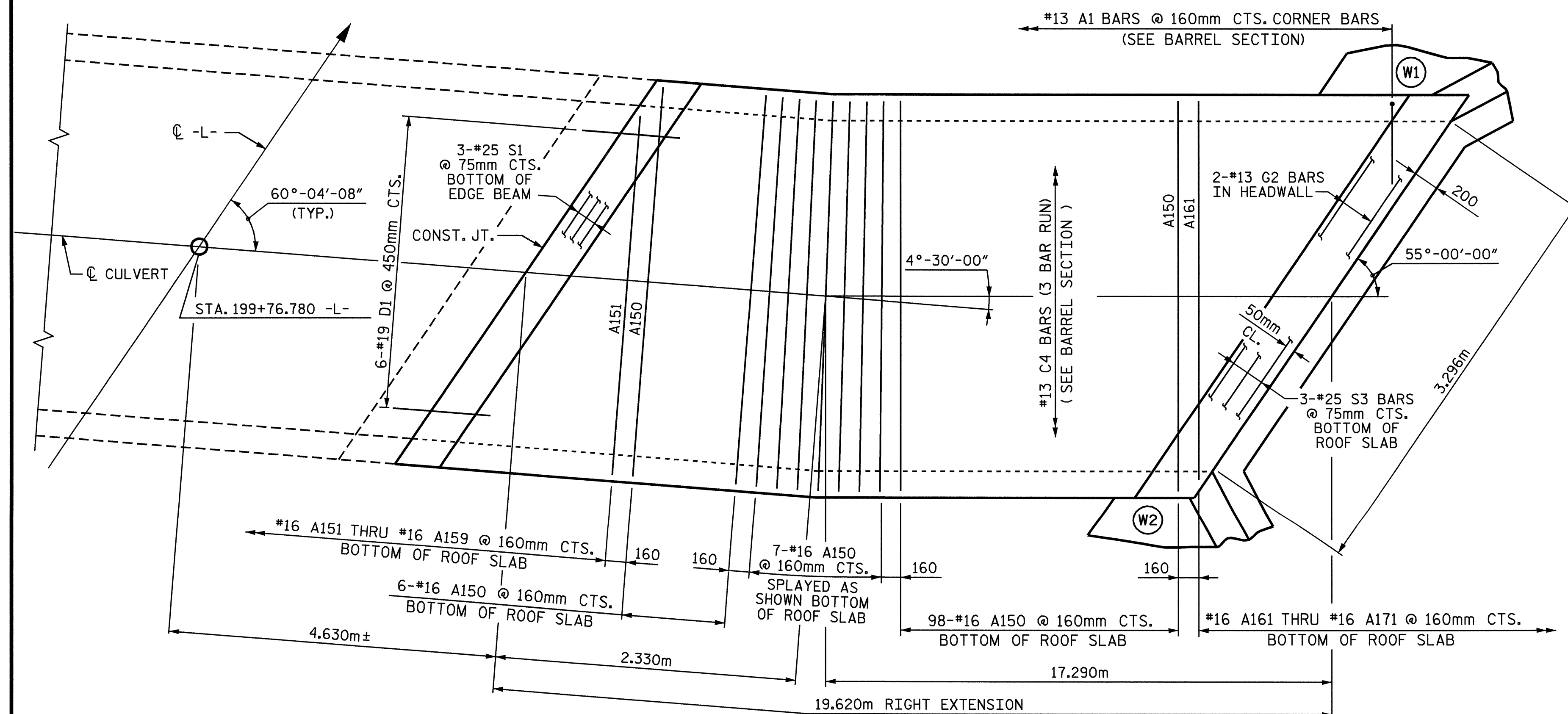
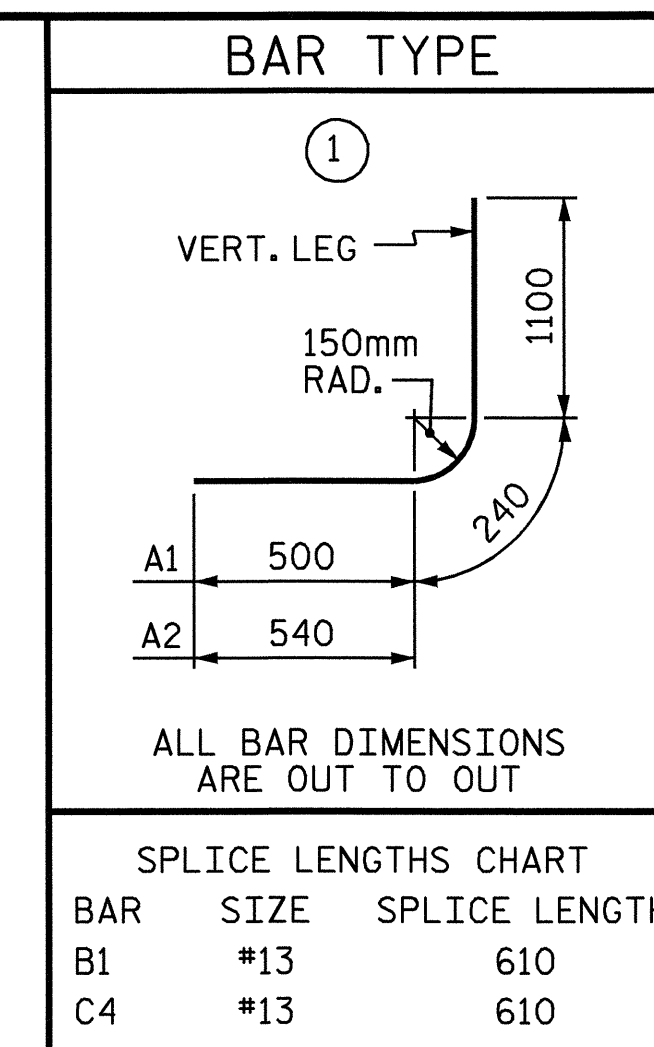


**PLAN - FLOOR SLAB**  
FIELD BEND C4 BARS AS NECESSARY



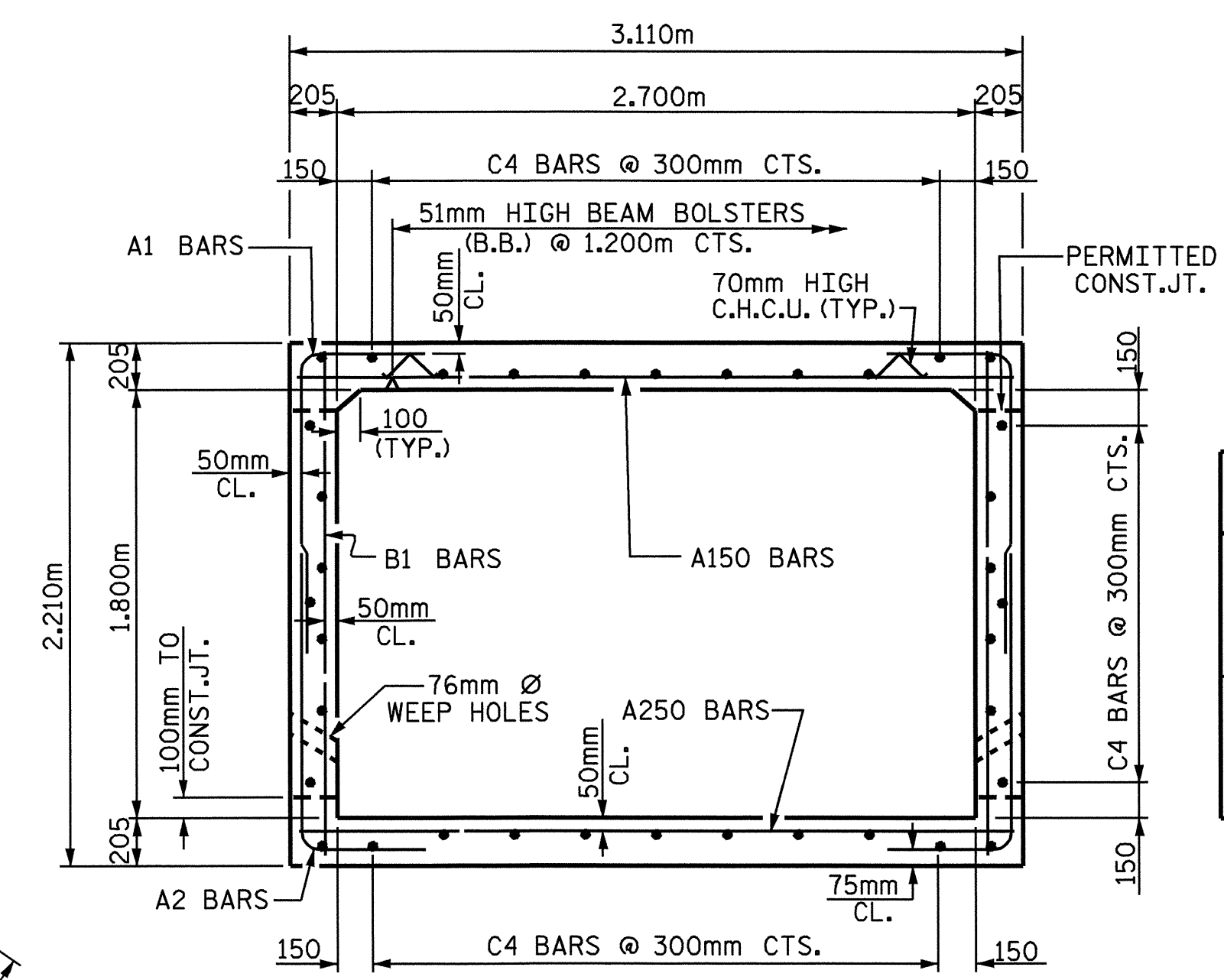
**PLAN - ROOF SLAB**  
FIELD BEND C4 BARS AS NECESSARY



ALL BAR DIMENSIONS ARE OUT TO OUT

SPLICE LENGTHS CHART		
BAR	SIZE	SPLICE LENGTH
B1	#13	610
C4	#13	610

BILL OF MATERIAL (RIGHT EXTENSION)									
BAR NO.	SIZE	TYPE	LENGTH	WEIGHT	BAR NO.	SIZE	TYPE	LENGTH	WEIGHT
A150	111	#16 STR.	3000	517	A250	117	#16 STR.	3000	545
A151	1	#16 STR.	2760	4	A251	1	#16 STR.	2800	4
A152	1	#16 STR.	2480	4	A252	1	#16 STR.	2540	4
A153	1	#16 STR.	2220	3	A253	1	#16 STR.	2280	4
A154	1	#16 STR.	1940	3	A254	1	#16 STR.	2020	3
A155	1	#16 STR.	1660	3	A255	1	#16 STR.	1760	3
A156	1	#16 STR.	1380	2	A256	1	#16 STR.	1500	2
A157	1	#16 STR.	1100	2	A257	1	#16 STR.	1240	2
A158	1	#16 STR.	830	1	A258	1	#16 STR.	980	2
A159	1	#16 STR.	520	1	A259	1	#16 STR.	720	1
					A260	1	#16 STR.	460	1
A161	1	#16 STR.	2920	5	A261	1	#16 STR.	2860	4
A162	1	#16 STR.	2680	4	A262	1	#16 STR.	2640	4
A163	1	#16 STR.	2440	4	A263	1	#16 STR.	2420	4
A164	1	#16 STR.	2220	3	A264	1	#16 STR.	2200	3
A165	1	#16 STR.	1980	3	A265	1	#16 STR.	2000	3
A166	1	#16 STR.	1740	3	A266	1	#16 STR.	1780	3
A167	1	#16 STR.	1520	2	A267	1	#16 STR.	1560	2
A168	1	#16 STR.	1280	2	A268	1	#16 STR.	1340	2
A169	1	#16 STR.	1040	2	A269	1	#16 STR.	1120	2
A170	1	#16 STR.	820	1	A270	1	#16 STR.	900	1
A171	1	#16 STR.	580	1	A271	1	#16 STR.	680	1
					A272	1	#16 STR.	460	1
A1	246	#13	1	1840	450				
A2	246	#16	1	1880	718				
B1	158	#13 STR.	1	2040	320				
D1	20	#19 STR.	1	760	34				
C4	108	#13 STR.	1	7180	771				
G2	2	#13 STR.	1	3640	7				
S1	6	#25 STR.	1	3460	82				
S3	6	#25 STR.	1	3640	87				
EPOXY COATED REINFORCING STEEL (kg)					3640				



**RIGHT ANGLE SECTION OF BARREL**  
THERE ARE 36 "C" BARS IN SECTION OF BARREL

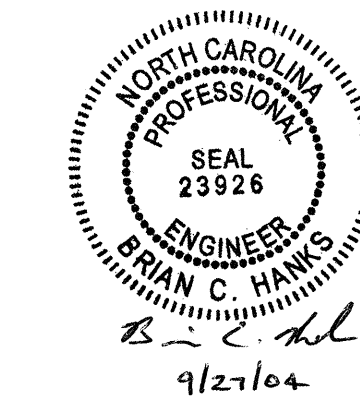
RIGHT EXTENSION: BARREL AND WINGS STRUCTURE QUANTITIES	
CLASS A CONCRETE	
BARREL =	39.2 m <sup>3</sup>
WINGS, ETC. =	6.9 m <sup>3</sup>
TOTAL =	46.1 m <sup>3</sup>
EPOXY COATED REINFORCING STEEL	
BARREL =	3640 kgs
WINGS, ETC. =	198 kgs
TOTAL =	3838 kgs

PROJECT NO. R-2539C  
PAMLICO COUNTY  
 STATION: 199+76.780 -L-

SHEET 5 OF 6

STATE OF NORTH CAROLINA  
 DEPARTMENT OF TRANSPORTATION  
 RALEIGH

**SINGLE**  
**2.700m X 1.800m**  
**CONCRETE BOX CULVERT**  
**RIGHT EXTENSION**  
**55° SKEW**



DRAWN BY: Keith D. Layne DATE: 01-08-04  
 CHECKED BY: A. B. NAIK DATE: 2-25-04

REVISIONS						SHEET NO.	
NO.	BY:	DATE:	NO.	BY:	DATE:	C-14	
1			3			TOTAL SHEETS	20
2			4				