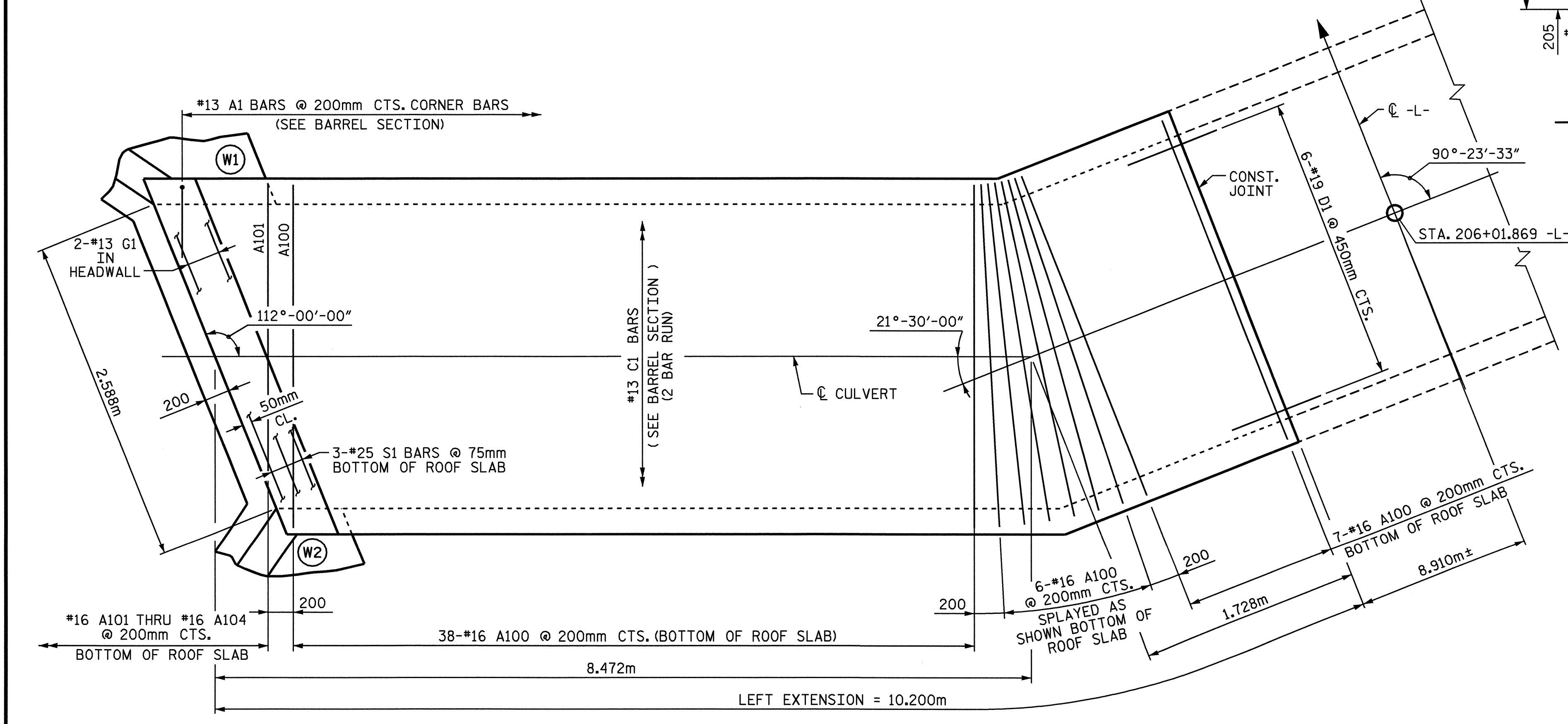


PLAN - FLOOR SLAB

FIELD BEND C1 BARS AS NECESSARY



PLAN - ROOF SLAB

FIELD BEND C1 BARS AS NECESSARY

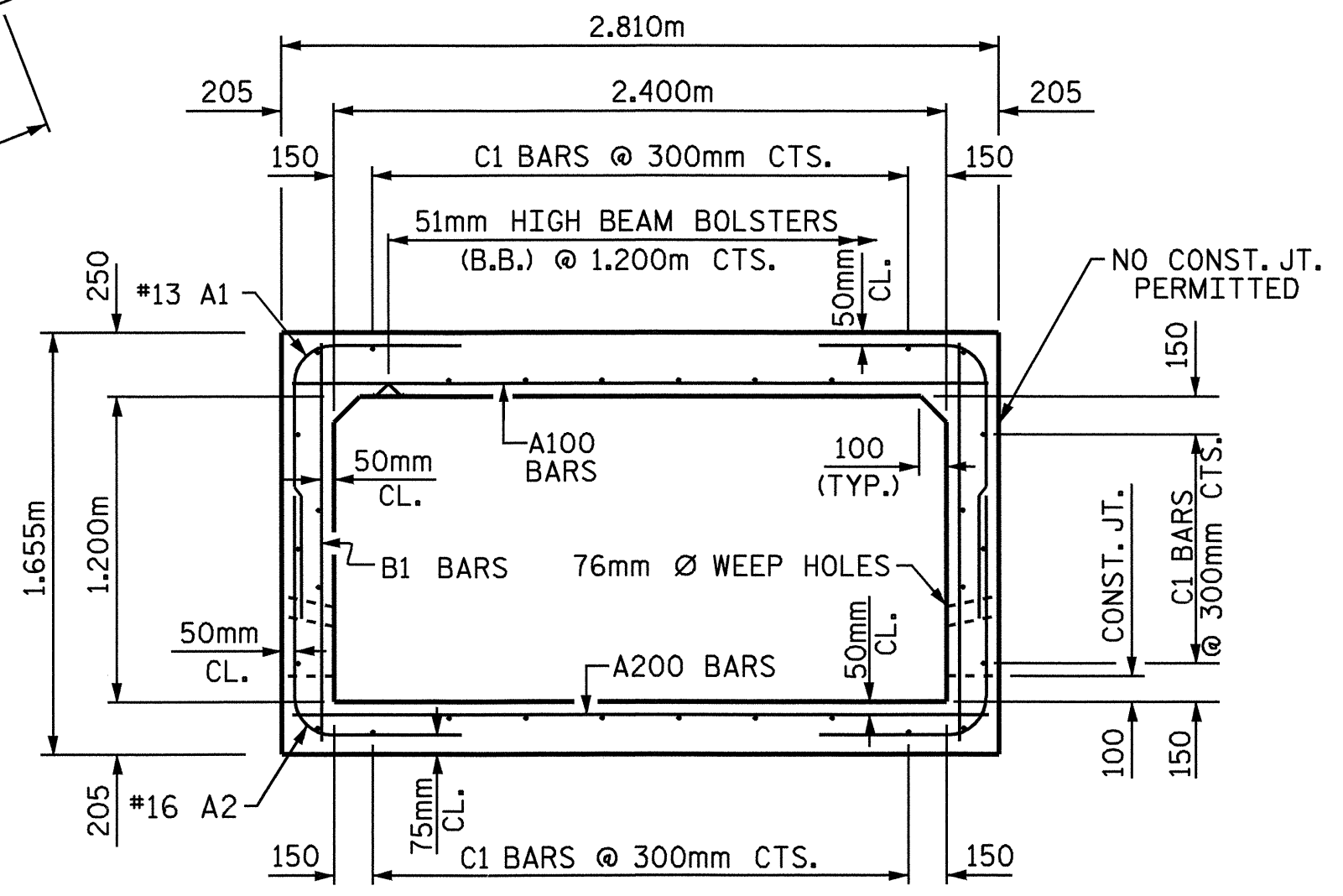
BAR TYPE		BILL OF MATERIAL (LEFT EXTENSION)			
BAR NO.	SIZE	TYPE	LENGTH	WEIGHT	
A100	51	#16 STR.	2700	214	
A101	1	#16 STR.	2260	4	
A102	1	#16 STR.	1760	3	
A103	1	#16 STR.	1260	2	
A104	1	#16 STR.	760	1	
A200	50	#16 STR.	2700	210	
A201	1	#16 STR.	2260	4	
A202	1	#16 STR.	1760	3	
A203	1	#16 STR.	1260	2	
A204	1	#16 STR.	760	1	

SPLICE LENGTHS CHART			
BAR	SIZE	SPLICE LENGTH	
B1	#13	610	
C1	#13	610	

A1	102	#13	1	1580	160
A2	102	#16	1	1560	247
B1	68	#13 STR.		1500	101
C1	60	#13 STR.		5380	321
D1	18	#19 STR.		760	31
G1	2	#13 STR.		2920	6
S1	6	#25 STR.		2920	70

EPOXY COATED REINFORCING STEEL (kg) 1380

LEFT EXTENSION
CLASS A CONCRETE
BARREL = 18.1 m³



RIGHT ANGLE SECTION OF BARREL

THERE ARE 30 "C" BARS IN SECTION OF BARREL

PROJECT NO. R-2539C
PAMLICO COUNTY
STATION: 206+01.869 -L-

SHEET 3 OF 5

STATE OF NORTH CAROLINA
DEPARTMENT OF TRANSPORTATION
RALEIGH
**SINGLE
2.400m X 1.200m
CONCRETE BOX CULVERT
LEFT EXTENSION**



DRAWN BY: Keith D. Layne DATE: 01-13-04
CHECKED BY: A. B. NAIK DATE: 2-26-04

REVISIONS						SHEET NO.
NO.	BY:	DATE:	NO.	BY:	DATE:	C-18
1			3			TOTAL SHEETS
2			4			20