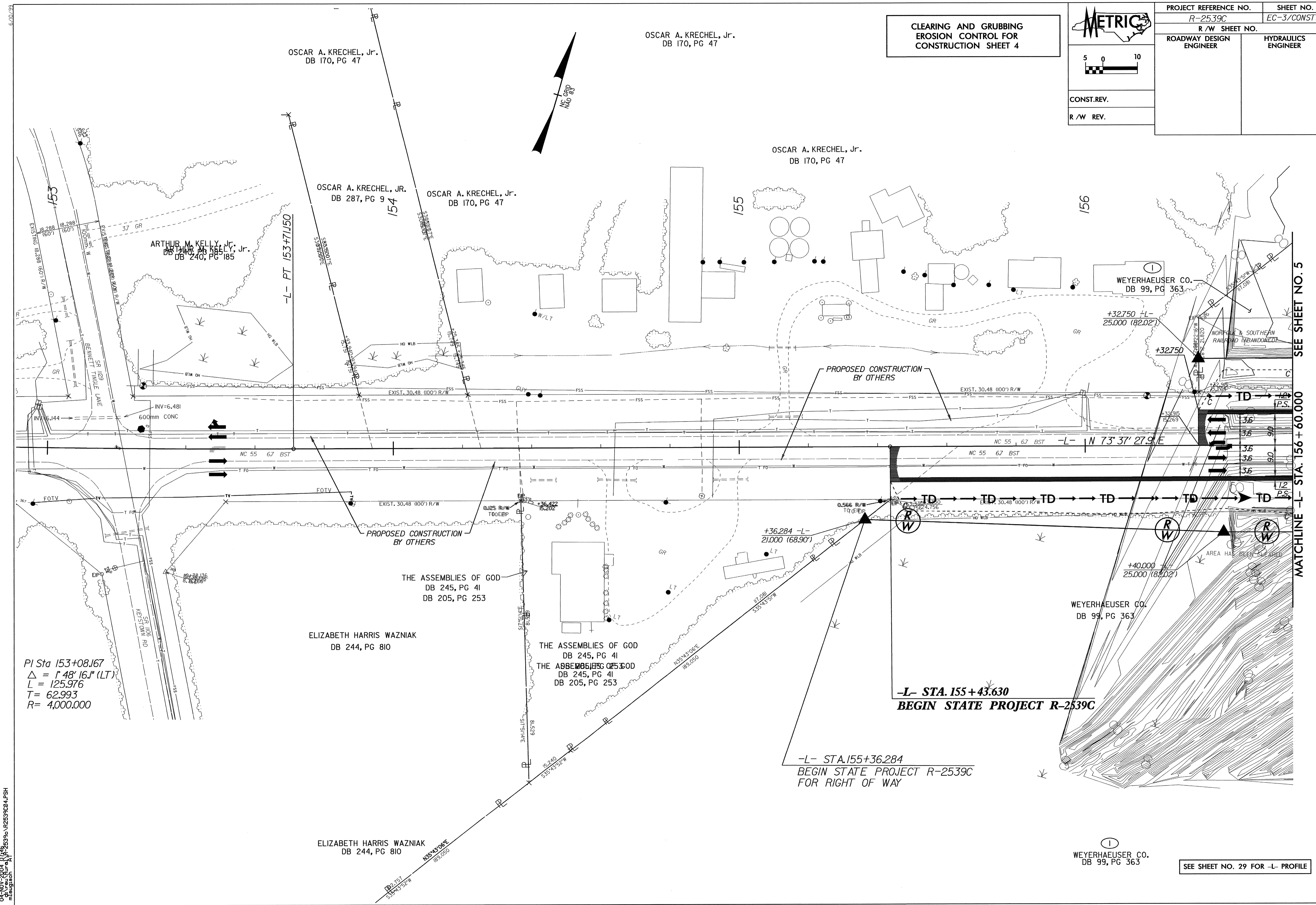
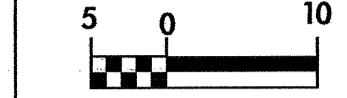


04 NOV 2004 07:48
m:\a\1048509s\12253904.PSH



CLEARING AND GRUBBING
EROSION CONTROL FOR
CONSTRUCTION SHEET 4

PROJECT REFERENCE NO. R-2539C		SHEET NO. EC-3/CONST.4	
R/W SHEET NO.			
ROADWAY DESIGN ENGINEER		HYDRAULICS ENGINEER	
CONST.REV.		R/W REV.	



PI Sta 153+08.167
 $\Delta = 1' 48" 16.1" (LT)$
 $L = 125.976$
 $T = 62.993$
 $R = 4,000.000$

-L- STA. 155 + 43.630
BEGIN STATE PROJECT R-2539C

-L- STA. 155 + 36.284
BEGIN STATE PROJECT R-2539C
FOR RIGHT OF WAY

Weyerhaeuser Co.
DB 99, PG 363

SEE SHEET NO. 29 FOR -L- PROFILE