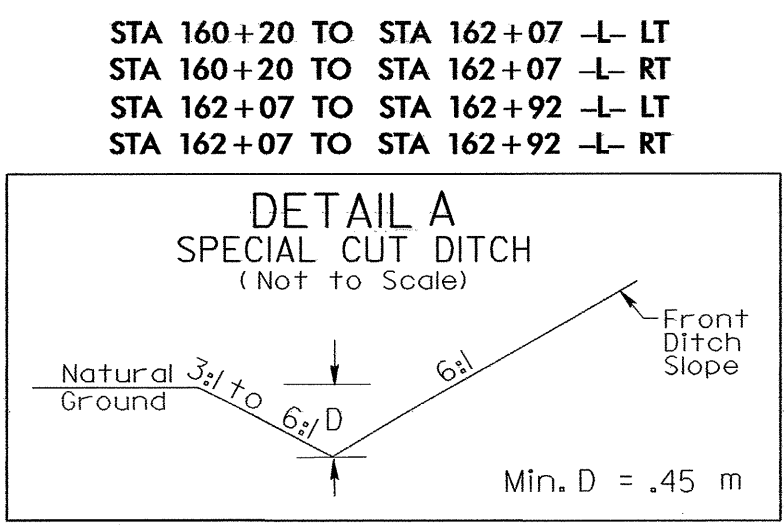
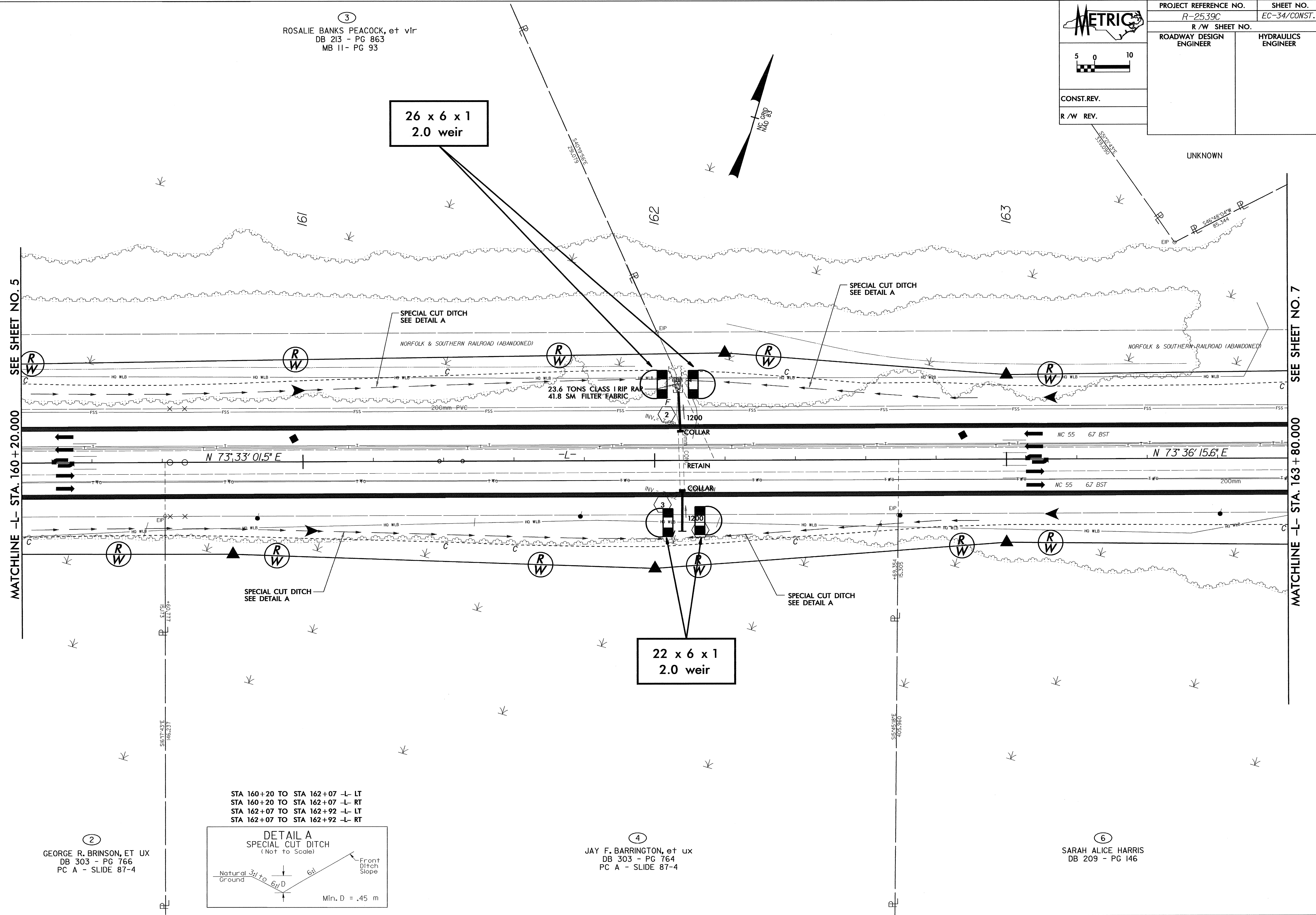


PROJECT REFERENCE NO. R-2539C		SHEET NO. EC-34/CONST.6	
R/W SHEET NO.			
ROADWAY DESIGN ENGINEER		HYDRAULICS ENGINEER	
CONST.REV.			
R/W REV.			

3
ROSALIE BANKS PEACOCK, et vir
DB 213 - PG 863
MB 11 - PG 93

26 x 6 x 1
2.0 weir

22 x 6 x 1
2.0 weir



SEE SHEET NO. 5

MATCHLINE -L- STA. 160 + 20.000

SEE SHEET NO. 7

MATCHLINE -L- STA. 163 + 80.000

04-NOV-2004 08:44
C:\Users\jbrinso\Documents\2539C\163-80\163-80.dwg
m.barrington