

PROJ. REFERENCE NO.	SHEET NO.	TOTAL SHEETS
U-4008	2-0	
STATE PROJ. NO.	F.A. PROJ. NO.	DESCRIPTION

BILL OF MATERIALS

PRECAST CONCRETE PANELS					
BAR NO.	NO.	SIZE	TYPE	LENGTH (FT)	WEIGHT (LB)
H1	201	#4	STR	9.2	1258.4
V2	38	#4	STR	3.7	95.1
V3	76	#4	STR	4.7	242.2
V4	95	#4	STR	5.7	367.7
V5	57	#4	STR	6.7	259.5
REINFORCING STEEL				LBS	2222.9
CLASS 'A' CONCRETE				CUBIC YARDS	13.9

C.I.P. COPING					
A	NO.	SIZE	TYPE	LENGTH (FT)	WEIGHT (LB)
A	40	#5	STR	25.00	1058.6
B	142	#4	B	2.67	258.0
C	4	#5	C	4.83	20.6
REINFORCING STEEL (COPING)				LBS	1337.2
CLASS 'A' CONCRETE (COPING)				CUBIC YARDS	7.0

ESTIMATED QUANTITIES		
C.I.P. COPING	LINEAR FEET	142.0
#57 STONE BACKFILL	CUBIC YARDS	21.0
PRECAST CONCRETE PANEL TYPE "B1"	NO.	2
PRECAST CONCRETE PANEL TYPE "C1"	NO.	4
PRECAST CONCRETE PANEL TYPE "D1"	NO.	5
PRECAST CONCRETE PANEL TYPE "E1"	NO.	3
HP 12X53 STEEL PILES	NO. = 15 LF =	239

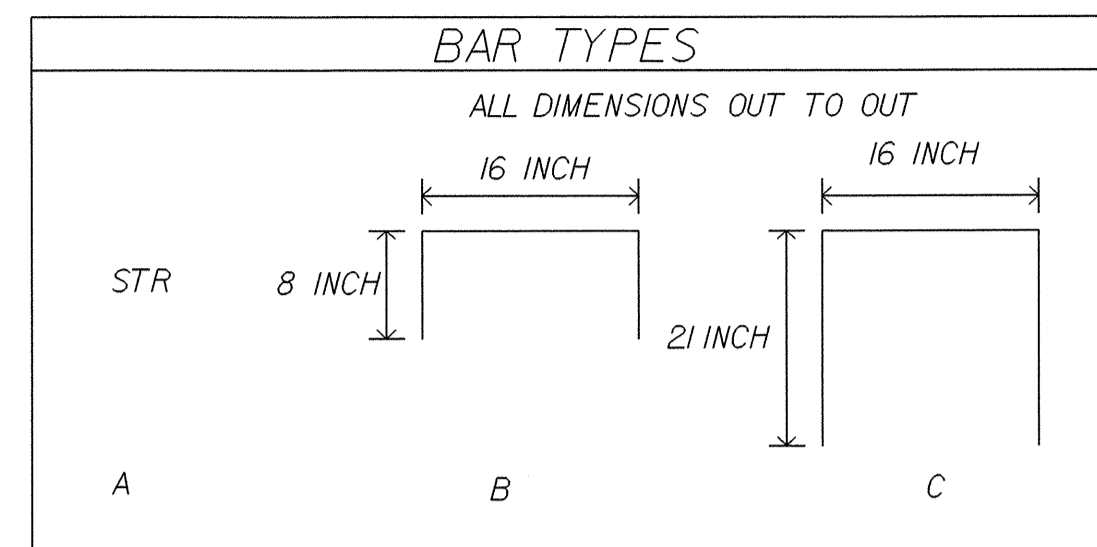
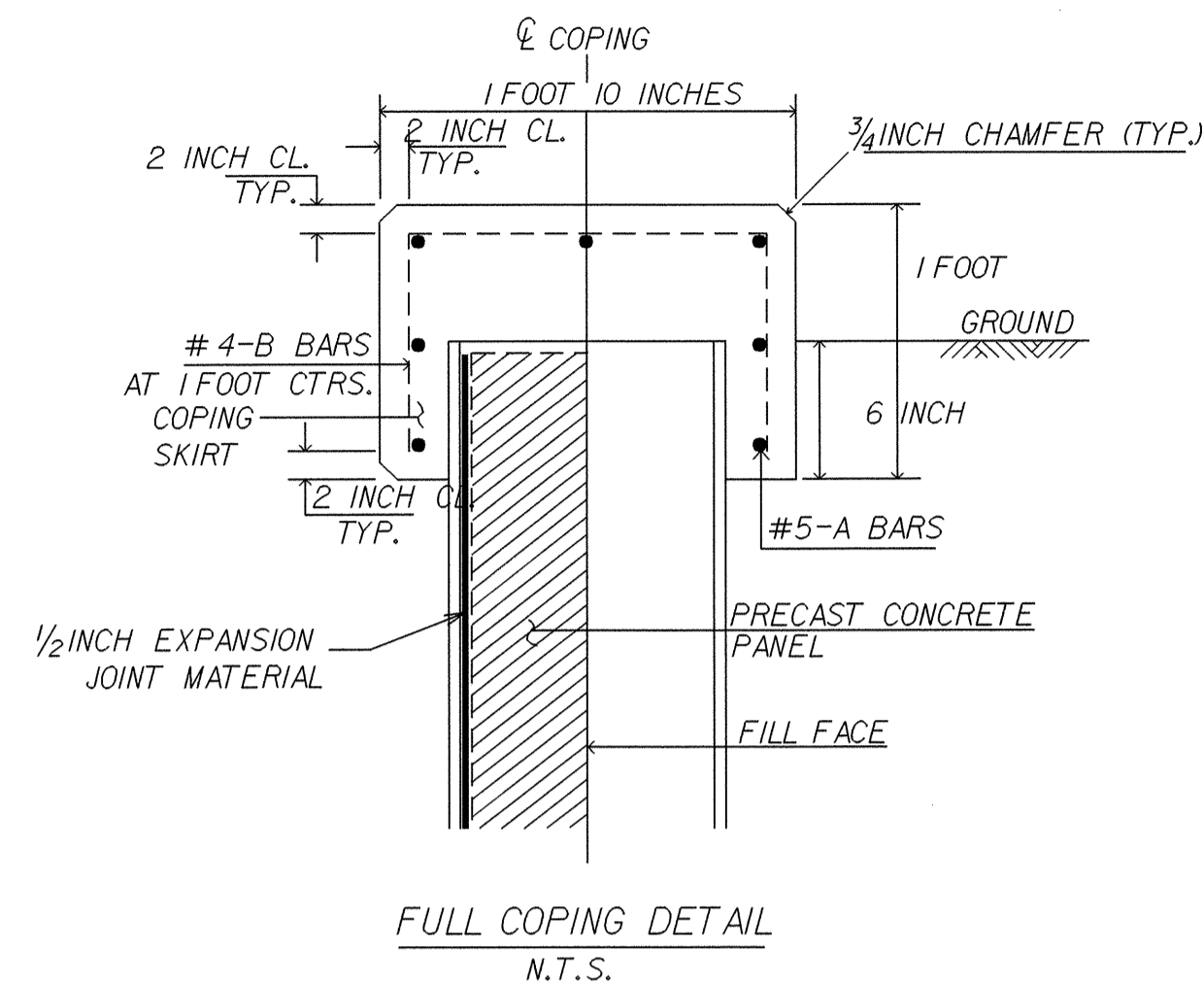
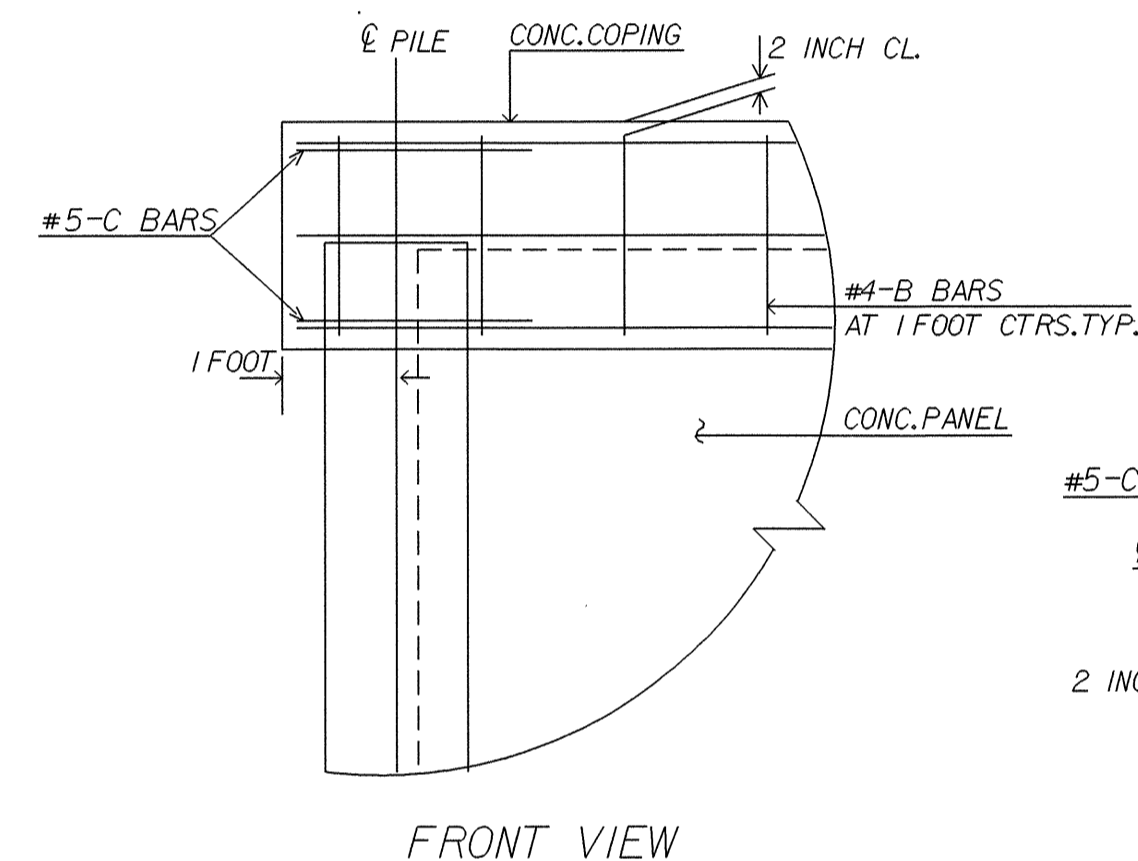
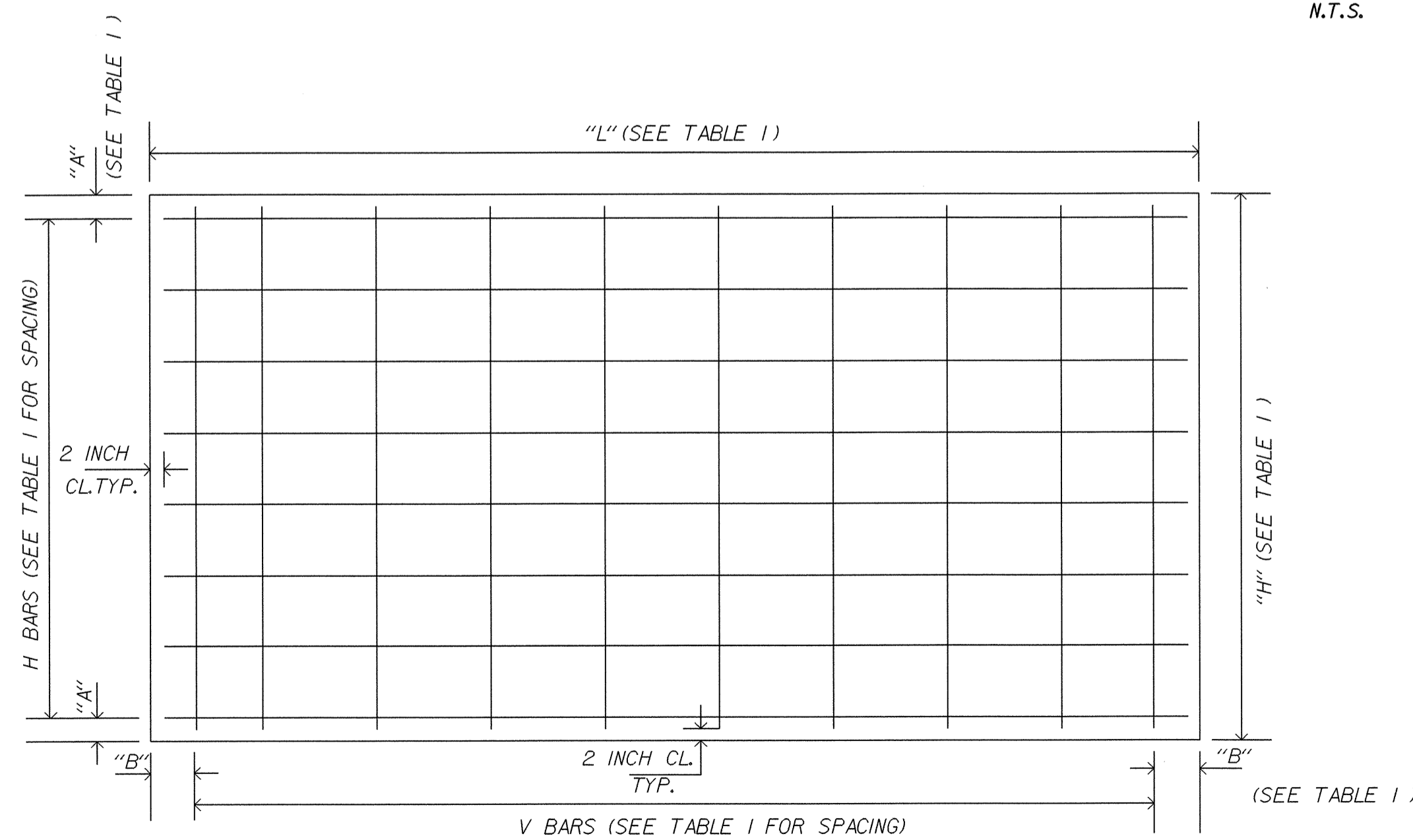


TABLE 1
PRECAST PANELS

PANEL TYPE	*H* (ft)	*L* (ft)	BAR TYPES				*A* (in)	*B* (in)	CONC. CUBIC YARDS PER PANEL
			HORIZONTAL		VERTICAL				
			NO. PER PANEL	SPACING C-C (ft)	NO. PER PANEL	SPACING C-C (ft)			
B1	4.0	9.5	8-H1	6	19-V3	6	3	3	0.70
C1	5.0	9.5	10-H1	6	19-V3	6	3	3	0.88
D1	6.0	9.5	17-H1	4	19-V4	6	4	3	1.06
E1	7.0	9.5	20-H1	4	19-V5	6	4	3	1.23



END OF COPING DETAIL
N.T.S.



TYPICAL PRECAST PANEL DETAIL
N.T.S.

PILE ELEVATIONS AND PANEL TYPES

PILE STATION	PILE NO.	PILE SIZE	TIP ELEV. (FT)	TOP OF CONCRETE (FT)	BOTTOM OF WALL (FT)	CUTOFF ELEV (FT)*	PILE LENGTH (FT)*	PANEL TYPE
16+50	1	HP12X53	295	301.8	305.7	307.0	12.0	
16+60	2	HP12X53	292	300.3	304.0	307.1	15.1	B1
16+70	3	HP12X53	290	299.2	302.3	307.2	17.2	D1
16+80	4	HP12X53	290	299.2	301.7	307.4	17.4	E1
16+90	5	HP12X53	290	299.2	302.0	307.5	17.5	E1
17+00	6	HP12X53	290	299.2	302.3	307.6	17.6	E1
17+10	7	HP12X53	291	300.3	302.6	307.7	16.7	D1
17+20	8	HP12X53	291	300.5	302.9	307.8	16.8	D1
17+30	9	HP12X53	291	300.8	303.3	308.0	17.0	D1
17+40	10	HP12X53	291	300.7	303.7	308.1	17.1	D1
17+50	11	HP12X53	292	301.8	304.1	308.2	16.2	C1
17+60	12	HP12X53	292	301.9	304.5	308.3	16.3	C1
17+70	13	HP12X53	293	302.4	304.8	308.4	15.4	C1
17+80	14	HP12X53	294	302.5	305.9	308.6	14.6	C1
17+90	15	HP12X53	297	303.5	307.4	308.7	11.7	B1

* SEE NOTE 16 ON SHEET 1

PROJECT U-4008
ORANGE COUNTY
STATION 16+50 to 17+90 -Y4A-

STATE OF NORTH CAROLINA
DEPARTMENT OF TRANSPORTATION
RALEIGH

PILE/PANEL WALL

DRAWN BY RSW DATE 5 / 04
CHECKED BY JRB DATE 5 / 04

SHEET 2 OF 2