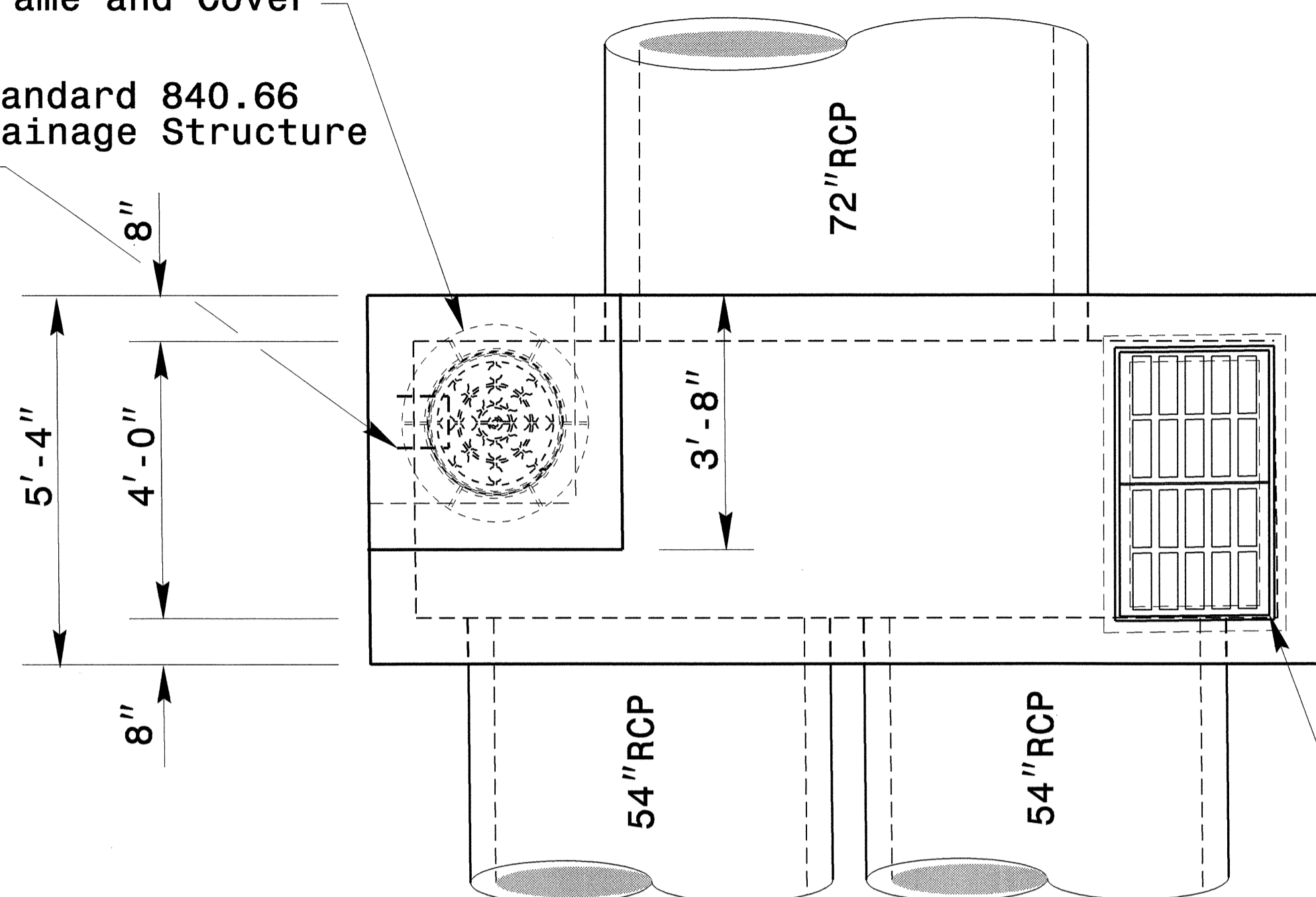


See Standard 840.54 For Manhole Frame and Cover

See Standard 840.66 For Drainage Structure Steps



GENERAL NOTES:

- * USE CLASS "B" CONCRETE THROUGHOUT.
- * PROVIDE ALL JUNCTION BOXES OVER 3'-6" IN DEPTH WITH STEPS 12" ON CENTER. USE STEPS WHICH COMPLY WITH STD. DRAWING 840.66.
- * OPTIONAL CONSTRUCTION - MONOLITHIC POUR, 2" KEYWAY, OR #4 BAR DOWELS AT 12" CENTERS AS DIRECTED BY THE ENGINEER.
- * USE FORMS FOR THE CONSTRUCTION OF THE BOTTOM SLAB.
- * ALL CONSTRUCTION AS DIRECTED BY THE ENGINEER
- * CHAMFER ALL EXPOSED CORNERS 1".
- * APPROXIMATE AND MAY VARY SLIGHTLY.
- * DETAIL INTENDED FOR NON-TRAFFIC BEARING DRAINAGE STRUCTURES.

BILL OF MATERIALS

BAR	NO.	SIZE	LENGTH	WEIGHT
H	44	#6	18'-8"	628
H	68	#5	5'-2"	367
V	64	#5	8'-3"	551
TOTAL REINF. STEEL (LBS.)				1546
CONC. (CU. YDS.)				10.5
PIPE DEDUCTION				
1 @ 72" (CU. YDS.)				-1.0
2 @ 54" (CU. YDS.)				-1.1
TOTAL CONC. (CU. YDS.)				8.4

* 0.30 CU. YD. PER FOOT OF RISER HEIGHT

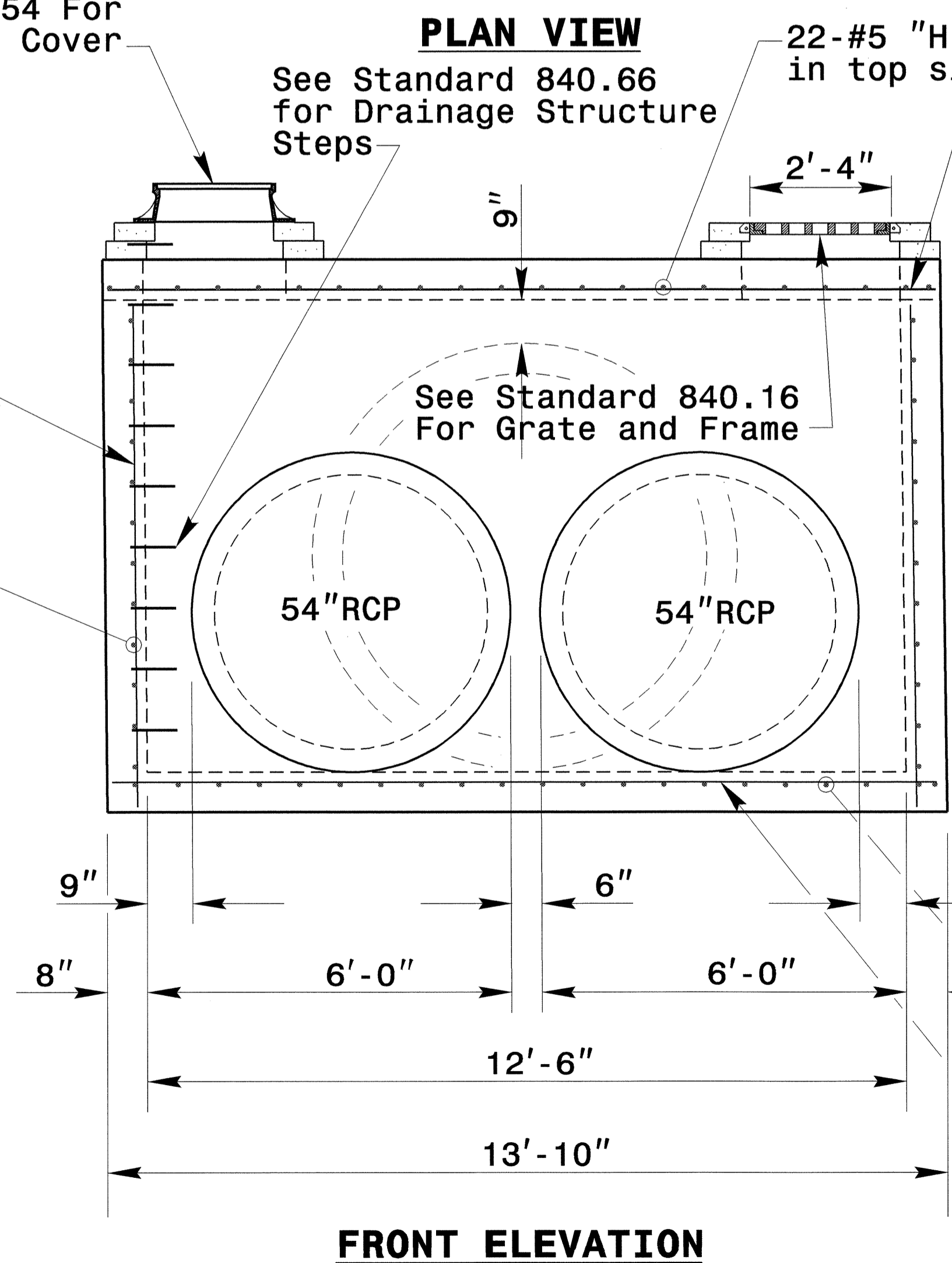
See Standard 840.16 for grate and frame

See Standard 840.54 For Manhole Frame and Cover

See Standard 840.66 for Drainage Structure Steps

20-#5 "V" bars @ 8" ctrs. end walls

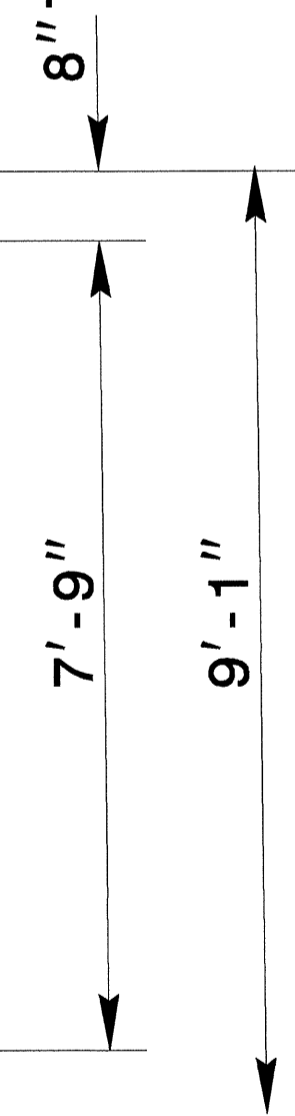
24-#5 "H" bars @ 8" ctrs. end walls



FRONT ELEVATION

22-#5 "H" bars @ 8" ctrs. in top slab

10-#5 "H" bars @ 8" ctrs. in top slab



22-#5 "H" bars @ 8" ctrs. in bottom slab

10-#5 "H" bars @ 8" ctrs. in bottom slab

See Standard 840.16 For Grate and Frame

END VIEW

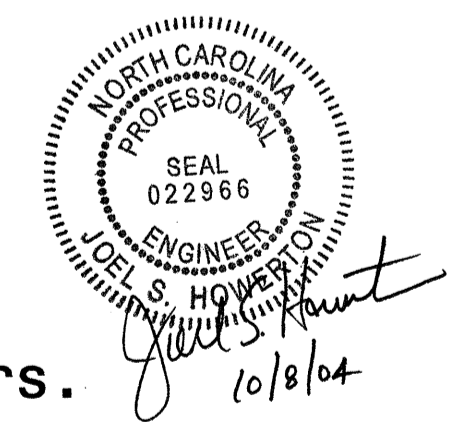
22-#5 "H" bars @ 8" ctrs. in top slab

10-#5 "H" bars @ 8" ctrs. in top slab

44-#5 "V" bars @ 8" ctrs. front & back walls

24-#5 "H" bars @ 8" ctrs. front & back walls

10-#5 "H" bars @ 8" ctrs. in bottom slab



**DESIGN SERVICES UNIT
STANDARDS AND SPECIAL DESIGN**
Office 919-250-4128 FAX 919-250-4119

**TWO GRATE INLET
DETAIL**

ORIGINAL BY: nbritt DATE: 10-06-04
 MODIFIED BY: DATE:
 CHECKED BY: *Joel S. Howerton* DATE: 10/8/04
 FILE SPEC.: details/nbritt/english/urban/u4008_6islandcover.dgn

5/14/99
07-OCT-2004 09:53
W:\Special_Details\nbritt\english\urban\4008_6island_cover.dgn
nbritt AT DS203039