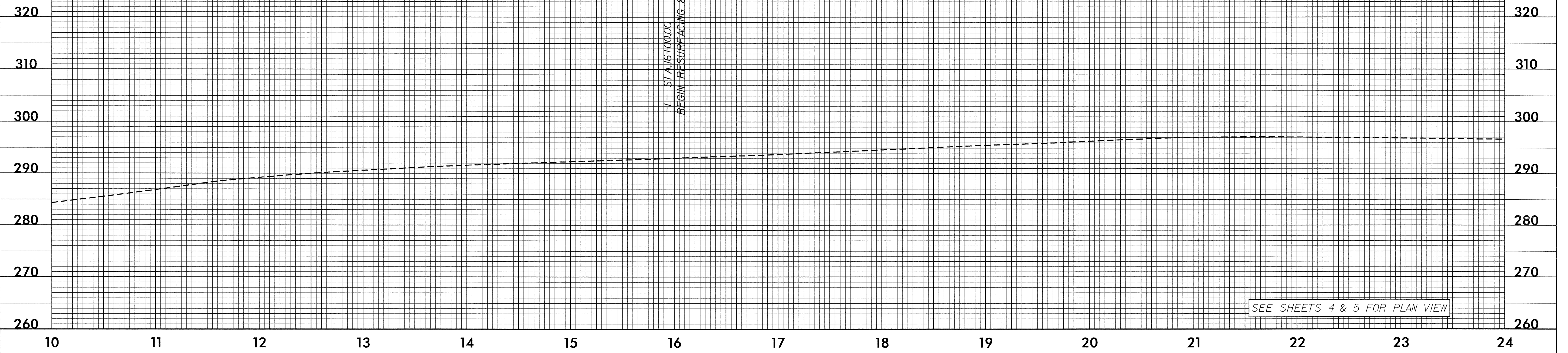


5/28/99

PROJECT REFERENCE NO. U-4008	SHEET NO. 6
ROADWAY DESIGN ENGINEER SEAL 19949 REG. D. THOMAS	HYDRAULICS ENGINEER SEAL 20870 MARC T. SHOWN
10/10/01	10/16/01

TBM# 1
12" NAIL IN BASE OF 16" PINE TREE
-BL- STA. 4+29.00 38.00 FT. LT.
ELEV. 276.42

US 15/501 (SBL)
-L-

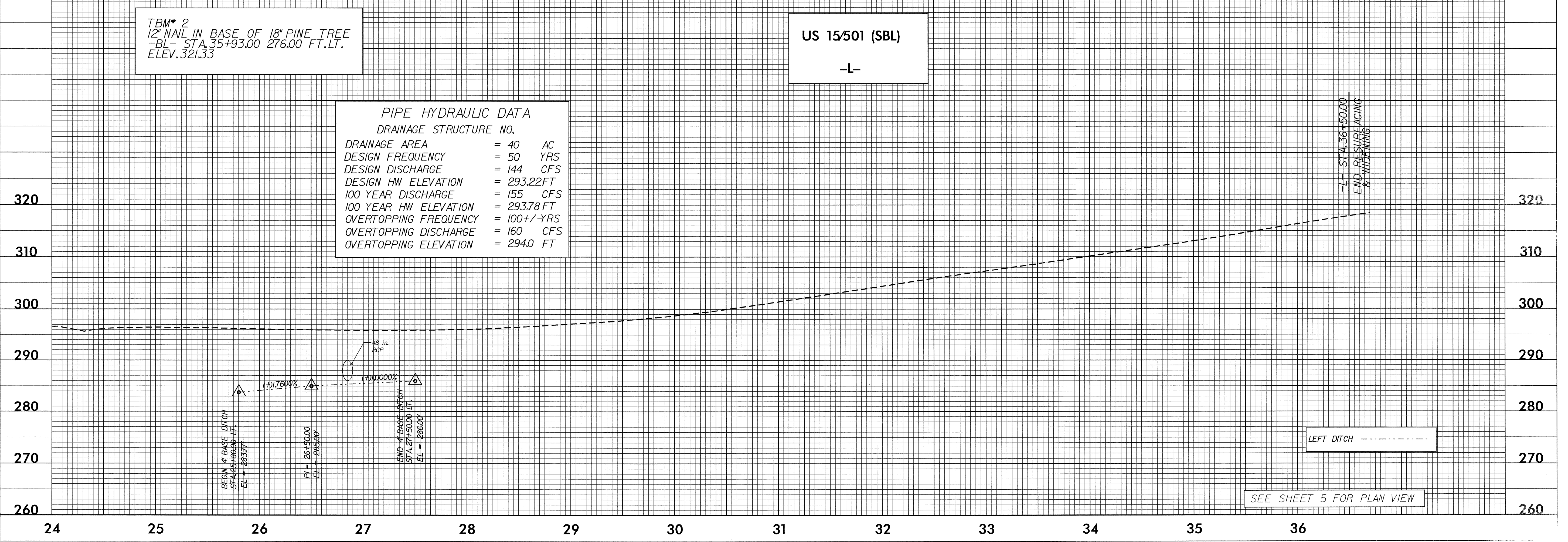


TBM# 2
12" NAIL IN BASE OF 18" PINE TREE
-BL- STA. 35+93.00 276.00 FT. LT.
ELEV. 321.33

US 15/501 (SBL)
-L-

PIPE HYDRAULIC DATA
DRAINAGE STRUCTURE NO.

DRAINAGE AREA	= 40 AC
DESIGN FREQUENCY	= 50 YRS
DESIGN DISCHARGE	= 144 CFS
DESIGN HW ELEVATION	= 293.22 FT
100 YEAR DISCHARGE	= 155 CFS
100 YEAR HW ELEVATION	= 293.78 FT
OVERTOPPING FREQUENCY	= 100+/- YRS
OVERTOPPING DISCHARGE	= 160 CFS
OVERTOPPING ELEVATION	= 294.0 FT



16-SEP-2004 09:24
E:\proj\104000\104100\104100.dwg
R1