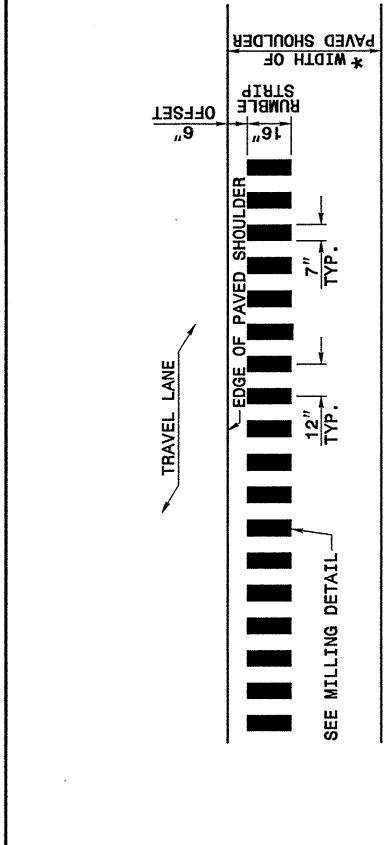


28-OCT-2004 10:41  
 W:\Special\_Details\stds\stds\02\stds to Special\_Details\english\665d01\0665d01.dgn  
 ericward AT DS212260

STATE OF  
NORTH CAROLINA  
DEPT. OF TRANSPORTATION  
DIVISION OF HIGHWAYS  
RALEIGH, N.C.

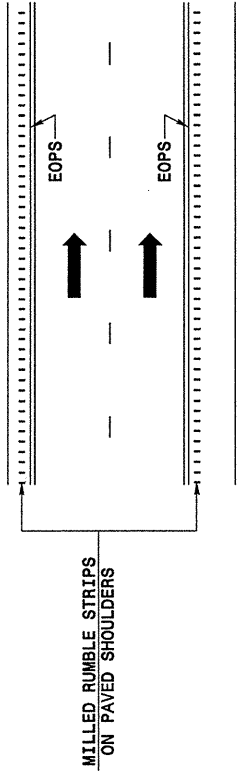
ENGLISH DETAIL DRAWING FOR  
**ASPHALT SHOULDERS  
MILLED RUMBLE STRIPS**

SHEET 1 OF 2  
**665D01**

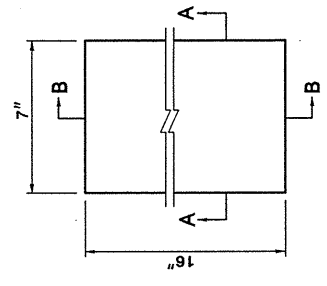


\* FOR WIDTHS SEE TYPICAL SECTIONS AND PLAN SHEETS

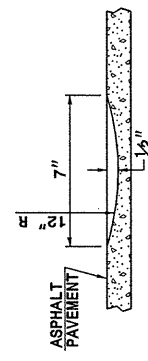
**PLAN VIEW  
PAVED SHOULDER**



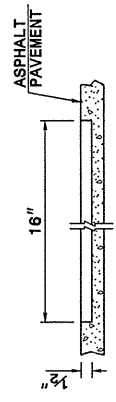
**LANE TREATMENT**



**PLAN VIEW  
MILLING DETAIL**



**SECTION A-A**



**SECTION B-B**

STATE OF  
NORTH CAROLINA  
DEPT. OF TRANSPORTATION  
DIVISION OF HIGHWAYS  
RALEIGH, N.C.

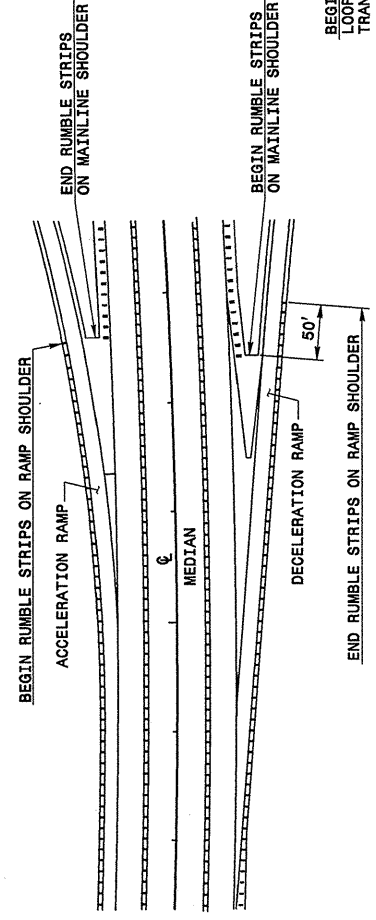
ENGLISH DETAIL DRAWING FOR  
**ASPHALT SHOULDERS  
MILLED RUMBLE STRIPS**

SHEET 1 OF 2  
**665D01**

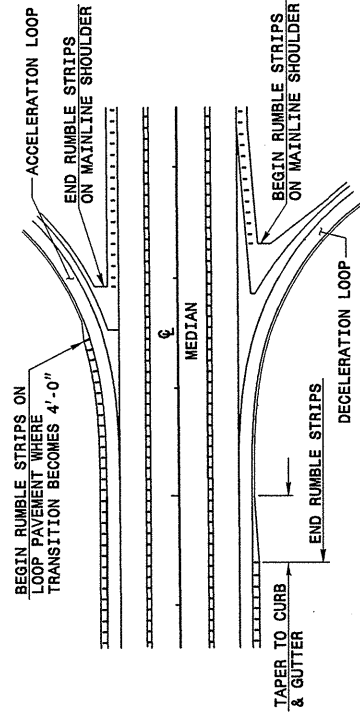
STATE OF  
NORTH CAROLINA  
DEPT. OF TRANSPORTATION  
DIVISION OF HIGHWAYS  
RALEIGH, N.C.

ENGLISH DETAIL DRAWING FOR  
**ASPHALT SHOULDERS  
MILLED RUMBLE STRIPS**

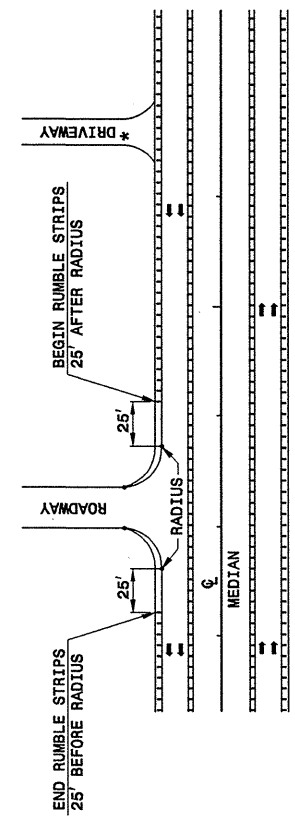
SHEET 2 OF 2  
**665D01**



**TREATMENT AT RAMP TERMINALS**



**TREATMENT AT LOOP TERMINALS**



**TREATMENT AT INTERSECTIONS  
(ROADWAY OR DRIVEWAY)**

\* TERMINATE AT DRIVEWAYS AS DIRECTED BY THE ENGINEER.

STATE OF  
NORTH CAROLINA  
DEPT. OF TRANSPORTATION  
DIVISION OF HIGHWAYS  
RALEIGH, N.C.

ENGLISH DETAIL DRAWING FOR  
**ASPHALT SHOULDERS  
MILLED RUMBLE STRIPS**

SHEET 2 OF 2  
**665D01**

PROJECT SERVICES UNIT  
STANDARDS AND SPECIAL DESIGN  
Office 919-250-4128 FAX 919-250-4119

**SEE PLATE FOR TITLE**

ORIGINAL BY: 2002 STANDARDS DATE: 01-15-02  
 MODIFIED BY: E.E. WARD DATE: 09-16-04  
 CHECKED BY: DATE:  
 FILE SPEC.: stds/02stdstodetails/english/665d01.dgn