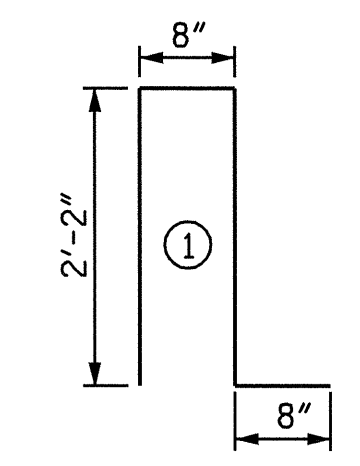


BAR TYPE	BILL OF MATERIAL FOR PARAPET AND TWO END POSTS				
	BAR NO.	SIZE	TYPE	LENGTH	WEIGHT
*B1	24	5	STR	26'-6"	663
*B2	60	5	STR	27'-11"	1747
*E1	8	7	STR	1'-10"	30
*E2	8	7	STR	2'-1"	34
*E3	8	7	STR	2'-4"	38
*E4	8	7	STR	2'-6"	41
*F1	16	6	STR	3'-7"	86
*S1	32	5	STR	2'-2"	72
*S2	374	5	1	5'-8"	2210
* EPOXY COATED REINFORCING STEEL					4921 LBS.
CLASS "AA" CONCRETE					22.4 C.Y.
CONCRETE PARAPET				389.83	LIN. FEET



BAR DIMENSIONS ARE OUT TO OUT.

**NOTES**

ALL REINFORCING STEEL IN CONCRETE PARAPET SHALL BE EPOXY COATED.

THE PARAPET SHALL NOT BE CAST UNTIL ALL SLAB CONCRETE HAS BEEN CAST AND HAS REACHED A MINIMUM COMPRESSIVE STRENGTH OF 3000 PSI.

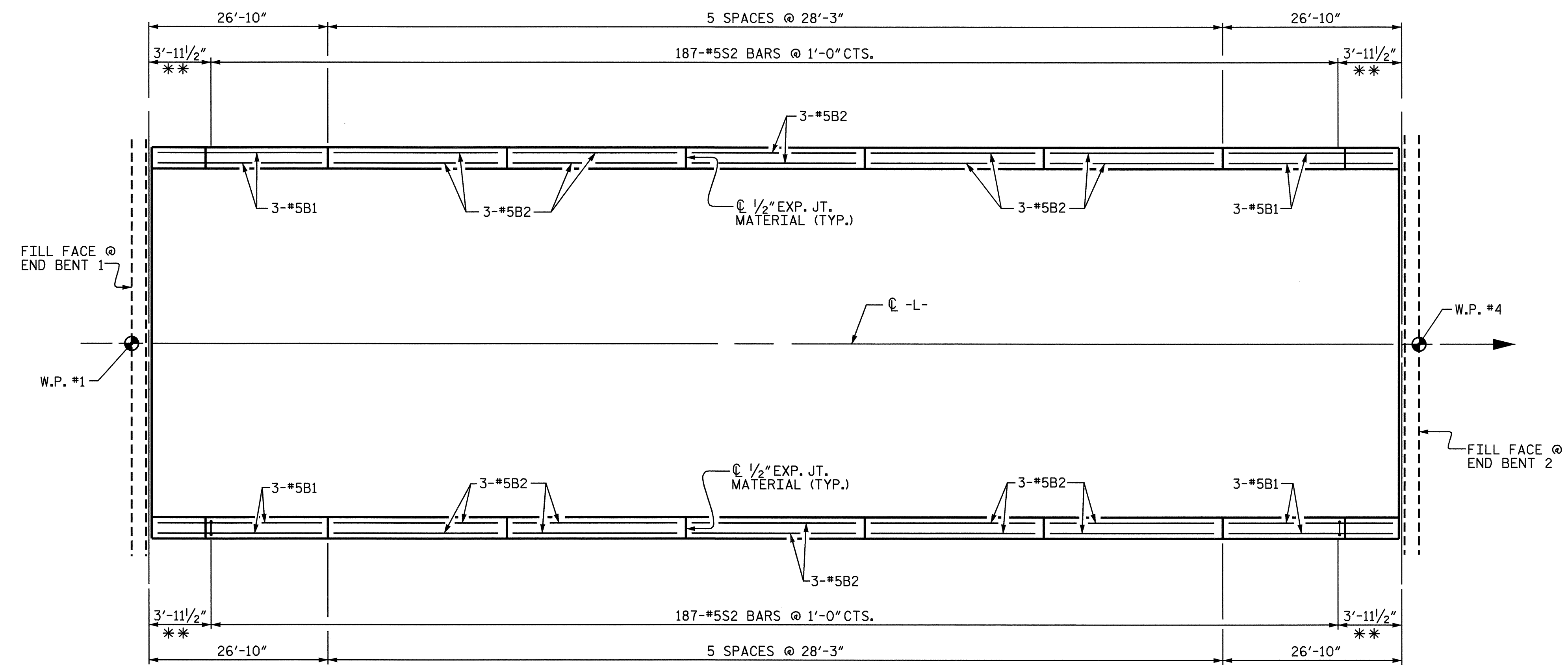
THE #16S1 BARS SHALL BE INSTALLED USING AN ADHESIVE ANCHORING SYSTEM AFTER SAWING THE JOINT. FOR ADHESIVELY ANCHORED ANCHOR BOLTS OR DOWELS, SEE SPECIAL PROVISIONS. THE YIELD LOAD FOR THE #16S1 BARS IS 18.6 KIPS. FIELD TESTING FOR THE ADHESIVE BONDING SYSTEM IS NOT REQUIRED.

THE JOINT IN THE DECK SHALL BE SAWED PRIOR TO THE CASTING OF CONCRETE PARAPET.

FOR DETAILS OF CONCRETE INSERT AND GUARDRAIL ANCHOR ASSEMBLY, SEE "RAIL POST SPACING AND END OF RAIL DETAIL".

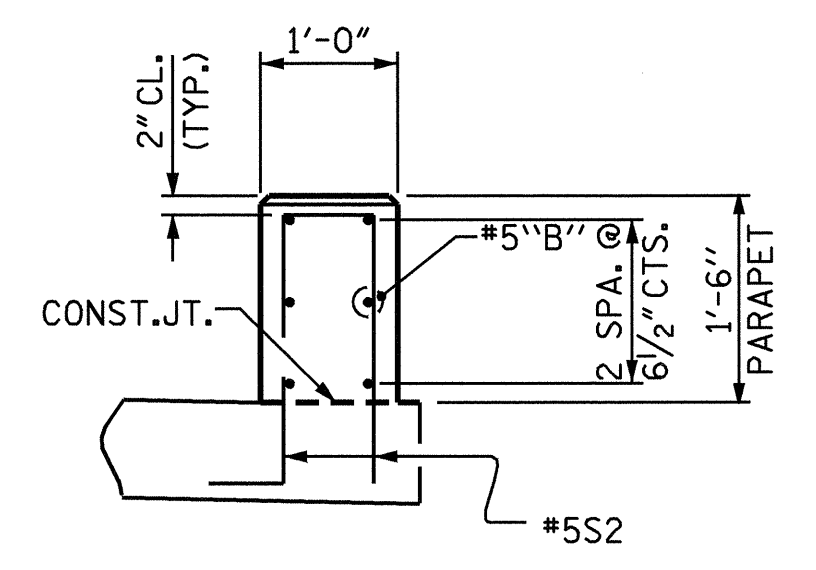
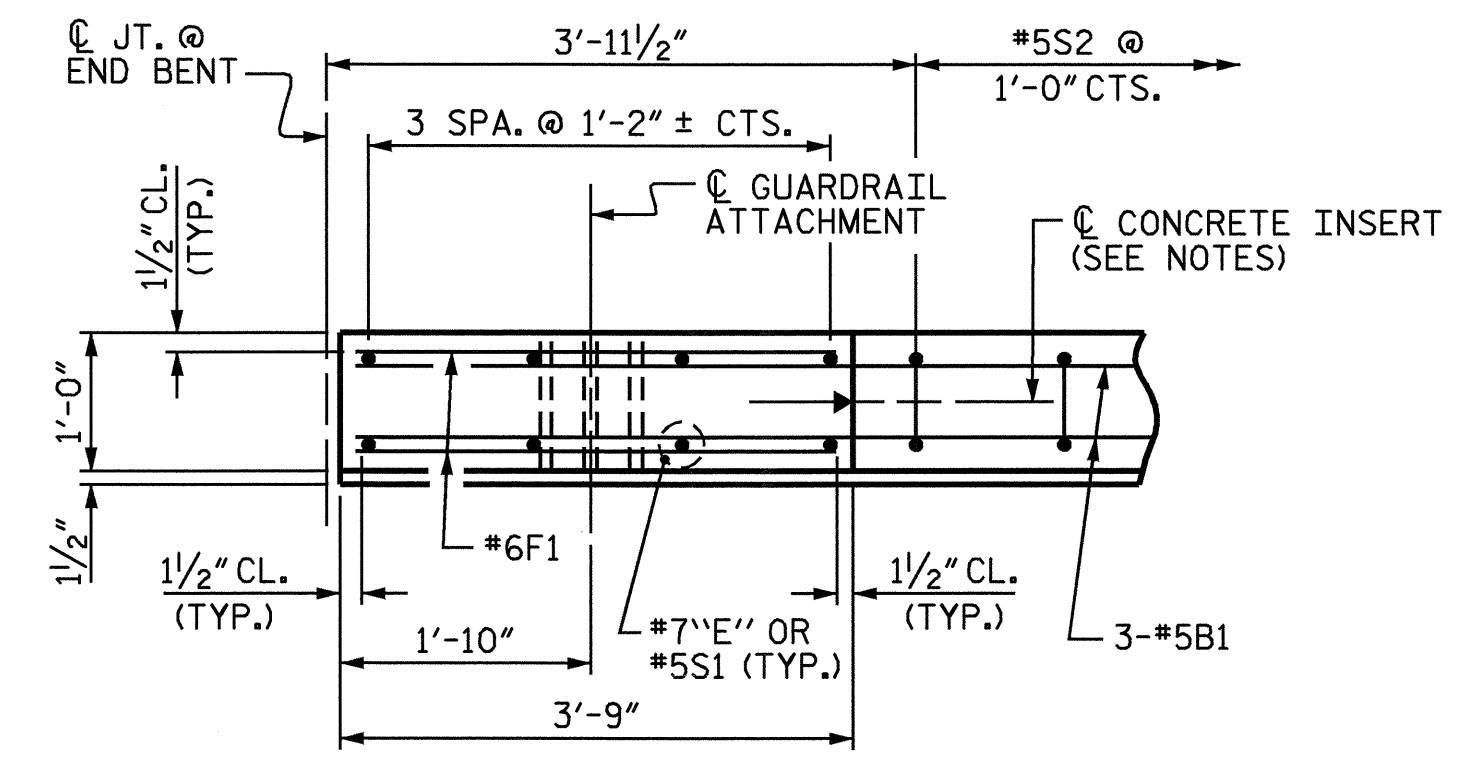
THE #16S2 BARS MAY BE SHIFTED SLIGHTLY AS NECESSARY TO MAINTAIN A 2" MIN. CLEARANCE TO EXPANSION JOINT IN PARAPET.

VERTICAL GROOVED CONTRACTION JOINTS, 1/2" IN DEPTH, SHALL BE TOOLED IN ALL EXPOSED FACES OF THE CONCRETE PARAPET AND IN ACCORDANCE WITH ARTICLE 825-10(B) OF THE STANDARD SPECIFICATIONS. A JOINT SHALL BE LOCATED AT EACH THIRD POINT BETWEEN CONCRETE PARAPET EXPANSION JOINTS. ONLY ONE JOINT IS REQUIRED AT MIDPOINT OF CONCRETE PARAPET SEGMENTS LESS THAN 20 FEET IN LENGTH AND NO JOINTS ARE REQUIRED FOR THOSE SEGMENTS LESS THAN 10 FEET IN LENGTH.

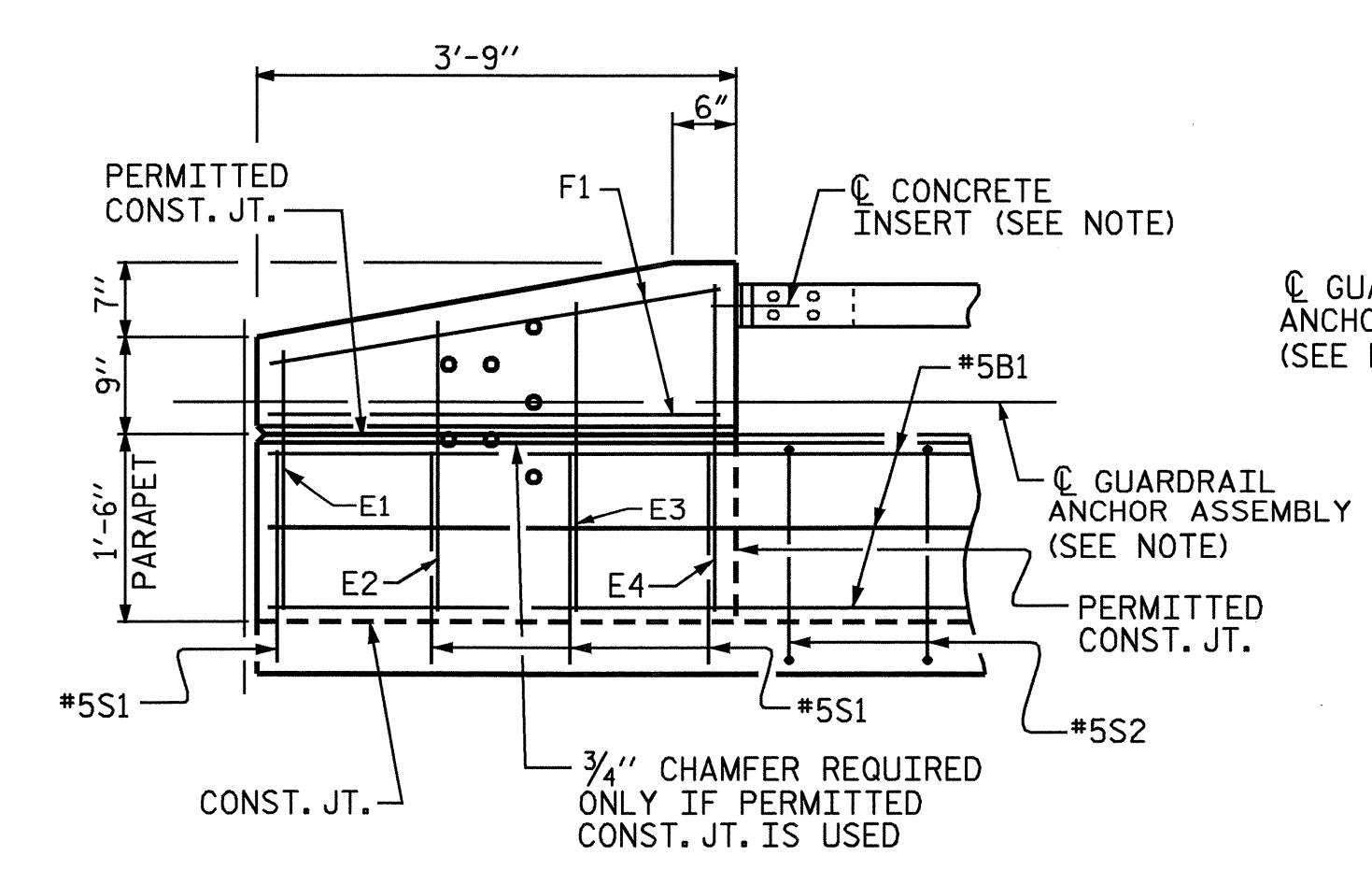


**PLAN OF PARAPET**

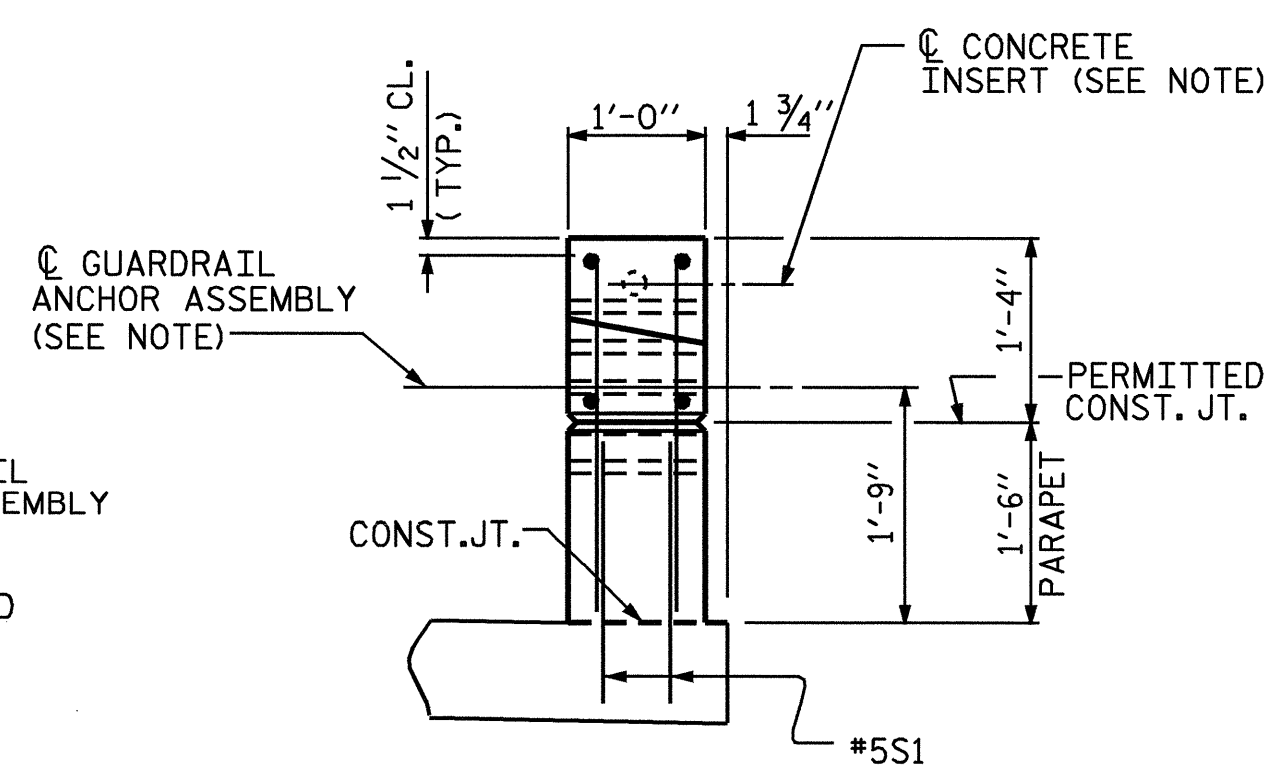
\*\* SEE DETAILS FOR REINFORCING STEEL IN THIS AREA



**SECTION THRU PARAPET**

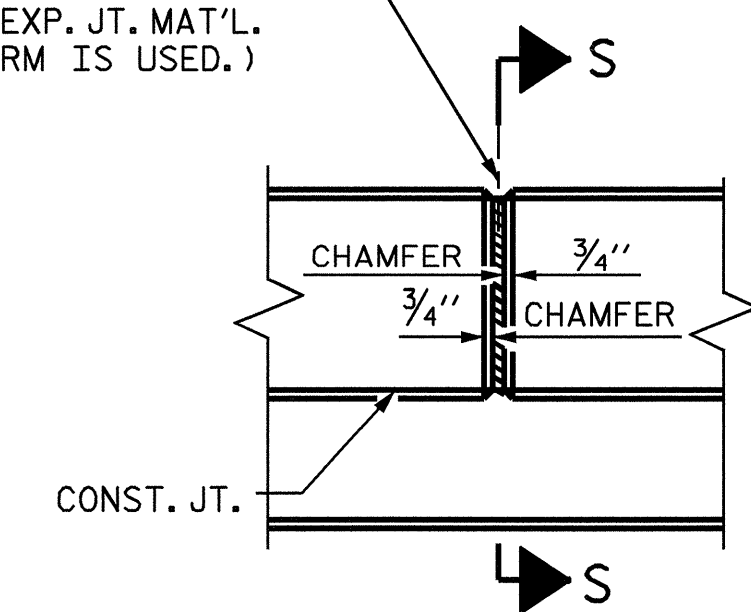


**ELEVATION**

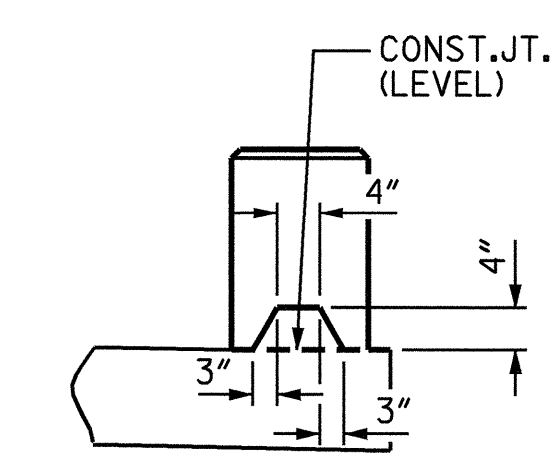


**END VIEW**

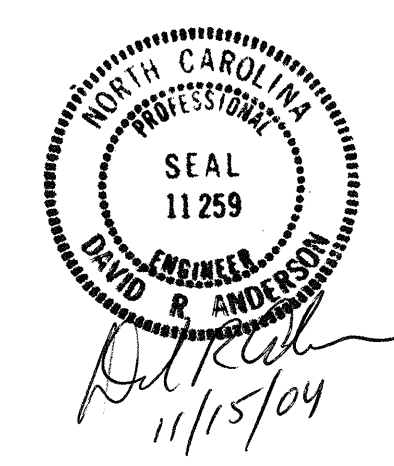
1/2" EXP. JT. MAT'L HELD IN PLACE WITH GALVANIZED NAILS. (NOTE: OMIT EXP. JT. MAT'L. WHEN SLIP FORM IS USED.)



**ELEVATION AT EXPANSION JOINTS**



**SECTION S-S**  
AT DAM IN OPEN JOINT (THIS IS TO BE USED ONLY WHEN SLIP FORM IS USED)



PROJECT NO. B-3350  
IREDELL COUNTY  
 STATION: 17+33.50 -L-

STATE OF NORTH CAROLINA  
 DEPARTMENT OF TRANSPORTATION  
 RALEIGH

**SUPERSTRUCTURE**  
**1'-0" x 1'-6" CONCRETE PARAPET**

REVISIONS						SHEET NO.
NO.	BY:	DATE:	NO.	BY:	DATE:	
1			3			5-15
2			4			TOTAL SHEETS 35

**END POST FOR ONE-BAR RAIL**