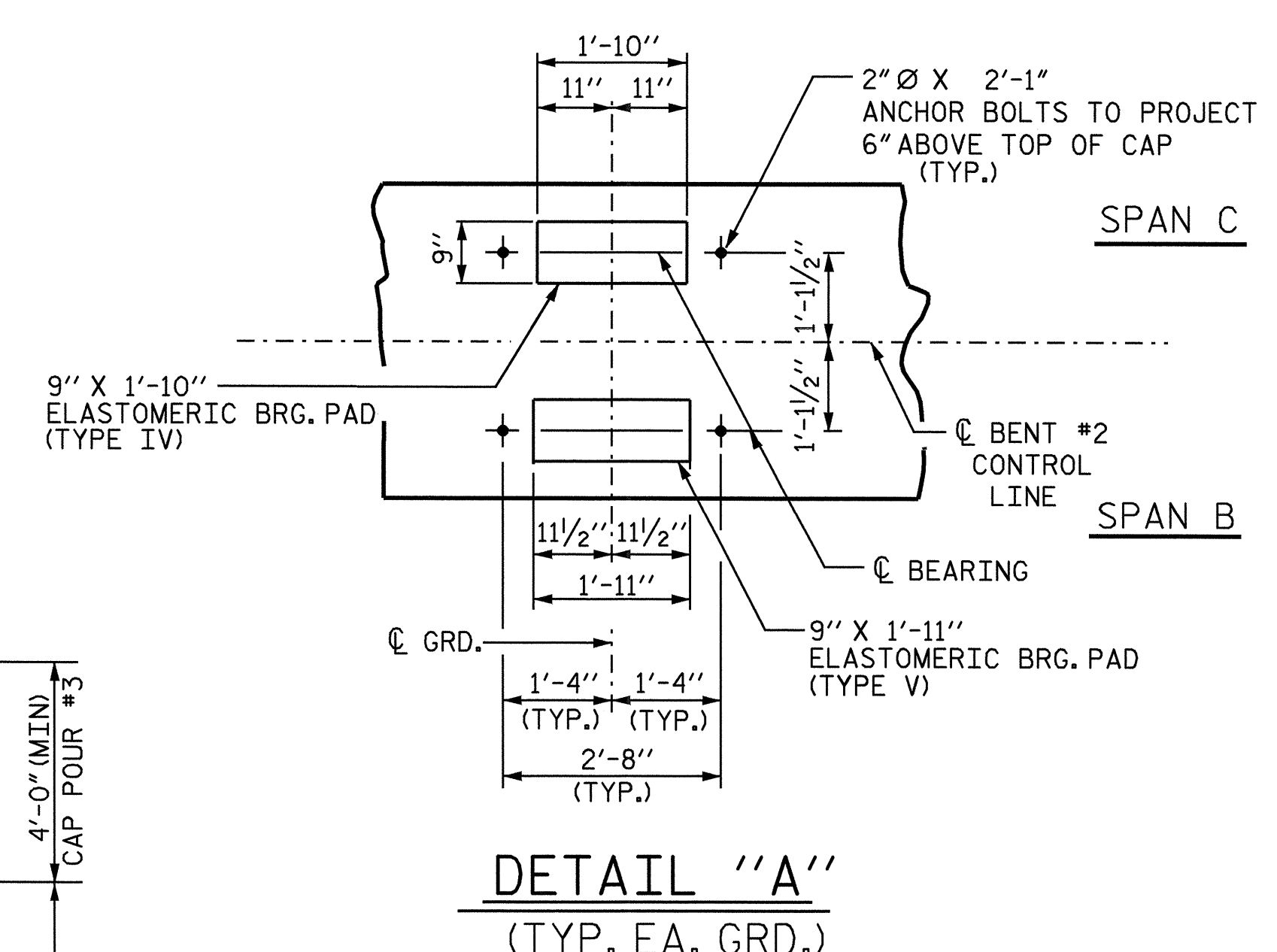
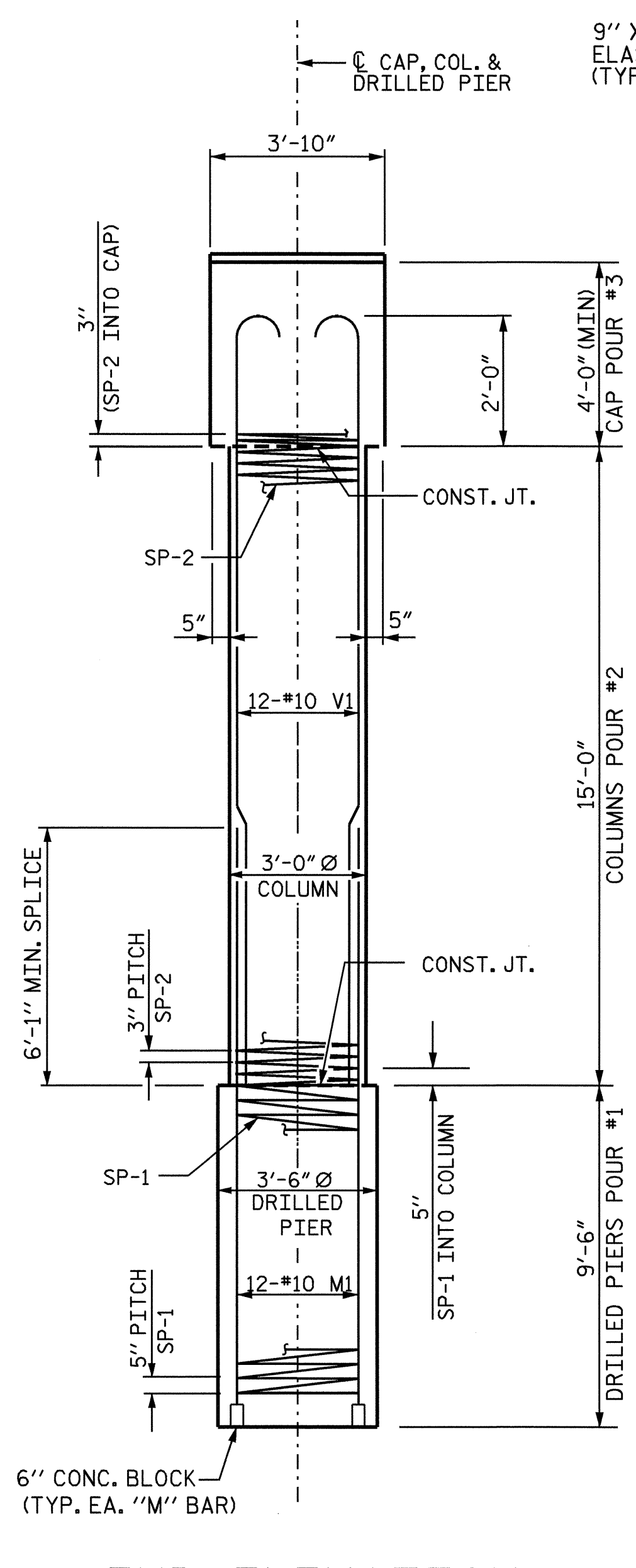
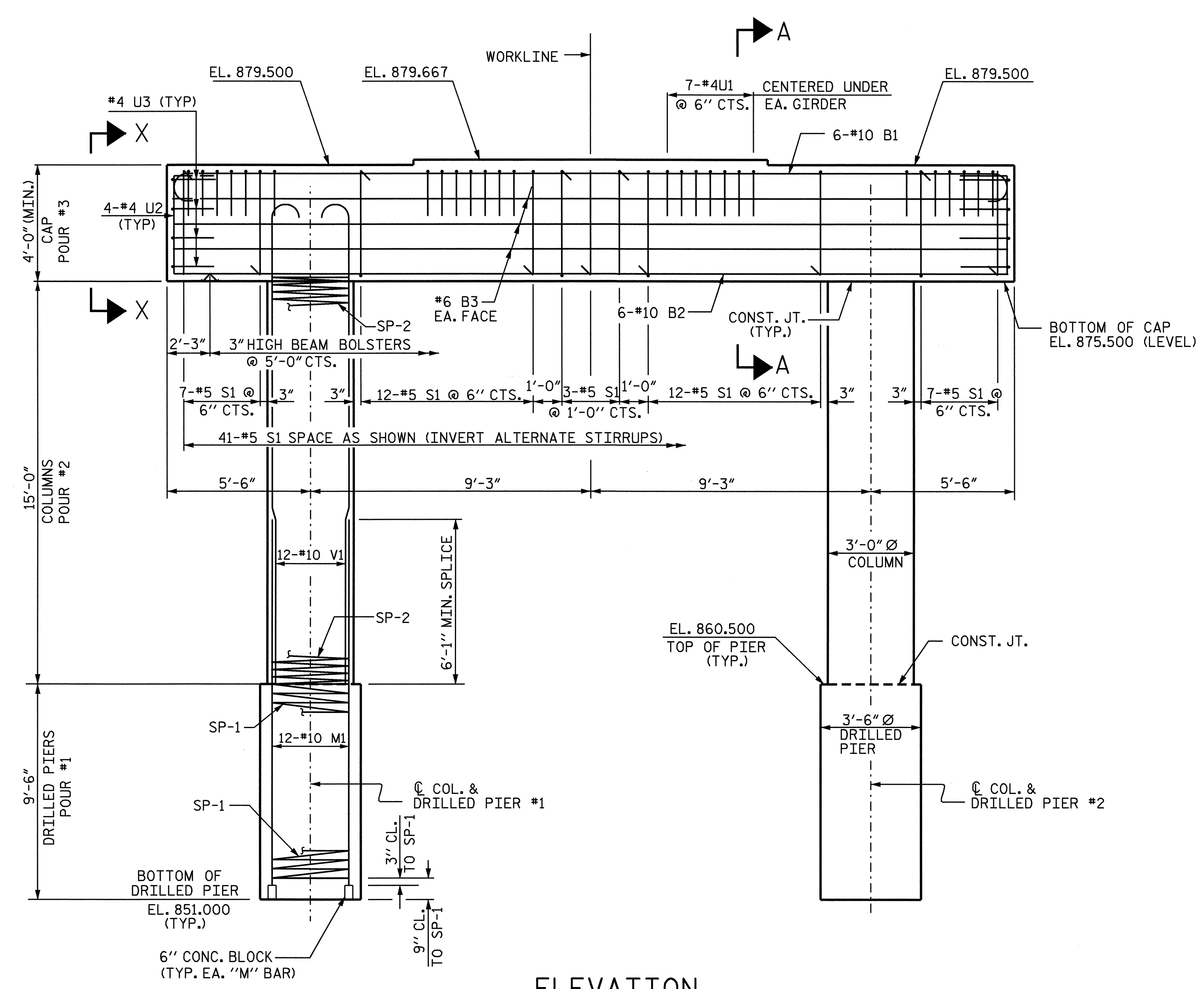
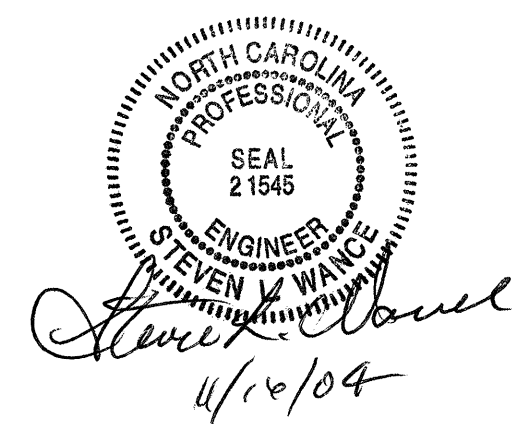


NOTES:  
 STIRRUPS IN CAP MAY BE SHIFTED AS NECESSARY TO CLEAR ANCHOR BOLTS.  
 THE CONTRACTOR SHALL ALIGN THE "V" & "M" BARS AS SHOWN IN THE PLAN OF DRILLED PIERS AND COLUMNS.  
 ALL STEEL IN THE DRILLED PIERS IS INCLUDED IN THE PAY ITEMS FOR REINFORCING STEEL AND SPIRAL COLUMN REINFORCING STEEL.  
 HOOKS ON "V" BARS MAY BE TURNED AS NECESSARY FOR PLACING REINFORCING STEEL.  
 THE CONTRACTORS ATTENTION IS CALLED TO THE FACT THAT THE LONGITUDINAL REINFORCEMENT FOR THE DRILLED PIER IS DETAILED WITH 3'-0" OF EXTRA LENGTH.  
 FOR DRILLED PIERS, SEE SPECIAL PROVISIONS.



DRAWN BY: SWANcPE DATE: 06/03  
 CHECKED BY: N.Q. TRAN DATE: 04/04

(COLUMN & DRILLED PIER INFORMATION IS TYPICAL FOR COLUMN AND DRILLED PIER 2)



PROJECT NO. B-3350  
IREDELL COUNTY  
 STATION: 17+33.50 -L-  
 SHEET 1 OF 2

STATE OF NORTH CAROLINA  
 DEPARTMENT OF TRANSPORTATION  
 RALEIGH

**SUBSTRUCTURE  
 BENT #2**

REVISIONS						SHEET NO.
NO.	BY:	DATE:	NO.	BY:	DATE:	5-24
1			3			TOTAL SHEETS
2			4			35