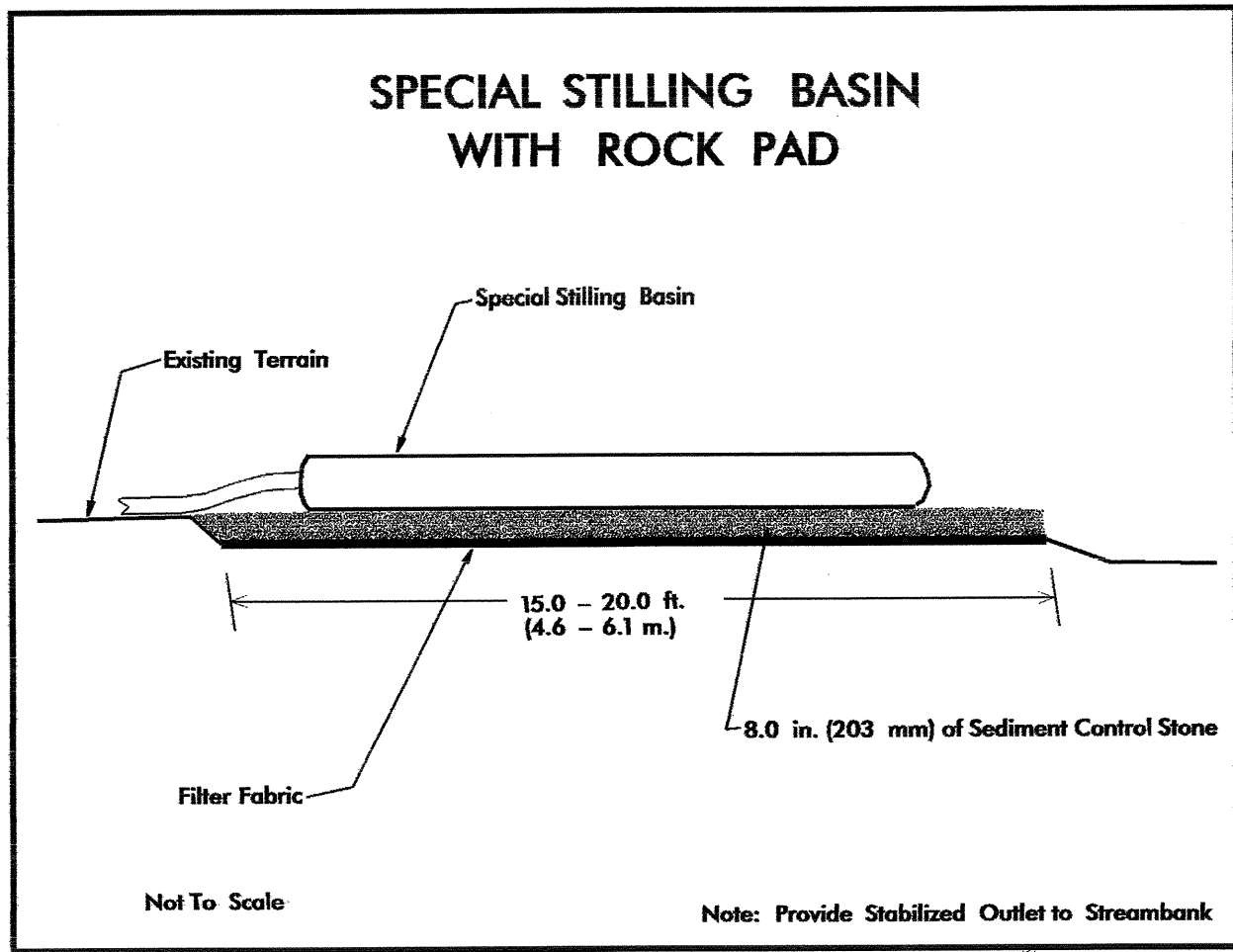


PROJECT REFERENCE NO.		SHEET NO.	
B-3350		EC-3/CONST.4	
RW SHEET NO.		HYDRAULICS ENGINEER	
ROADWAY DESIGN ENGINEER			

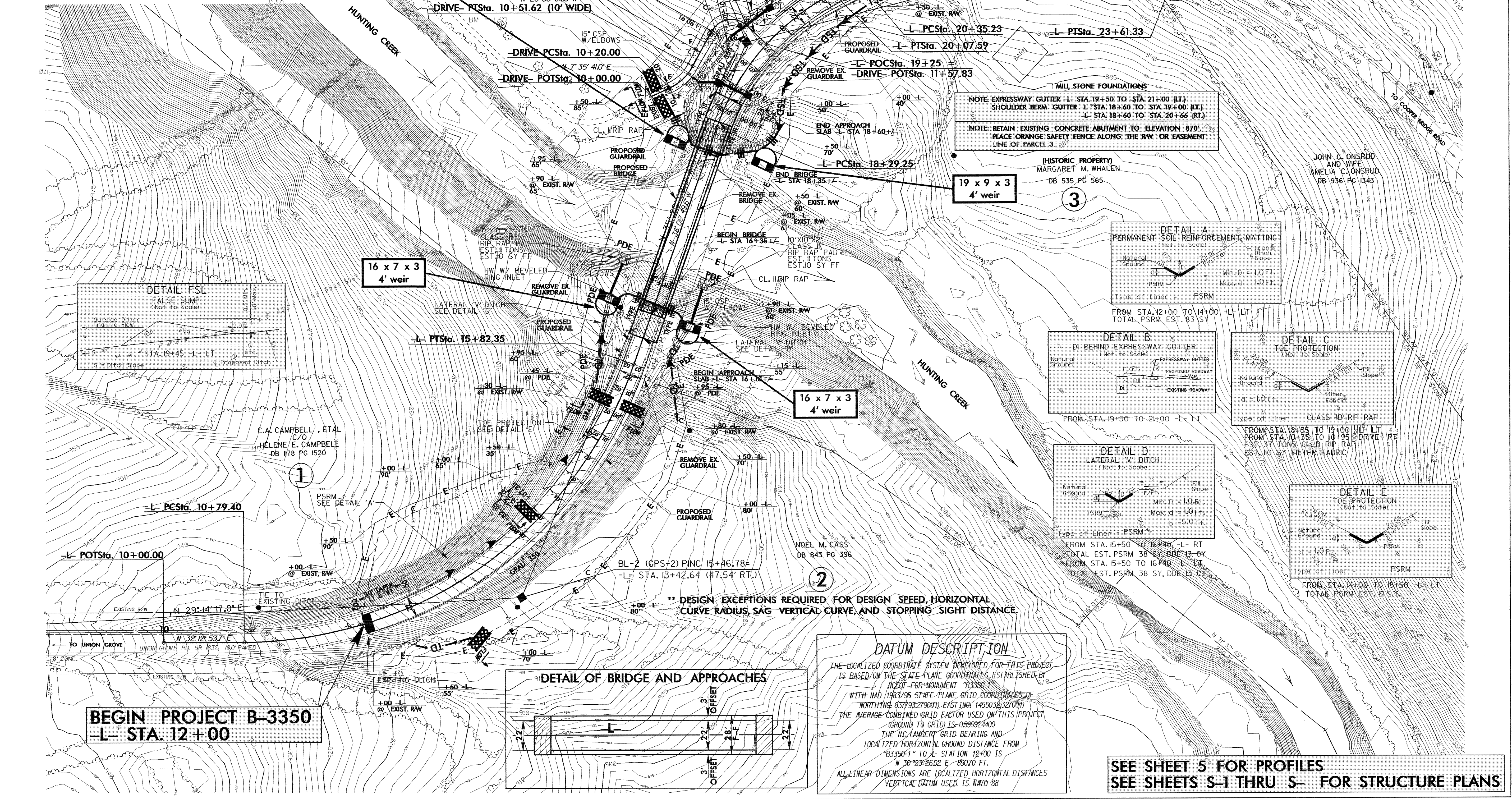


NOTE: UTILIZE SPECIAL STILLING BASIN, AND TEMPORARY ROCK SEDIMENT DAM TYPE - B AS STILLING BASIN WHERE APPLICABLE.

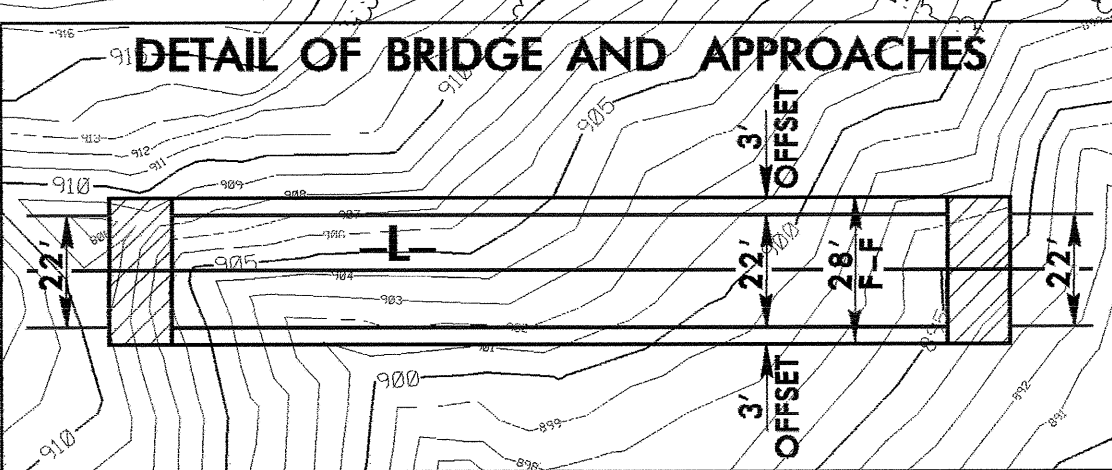
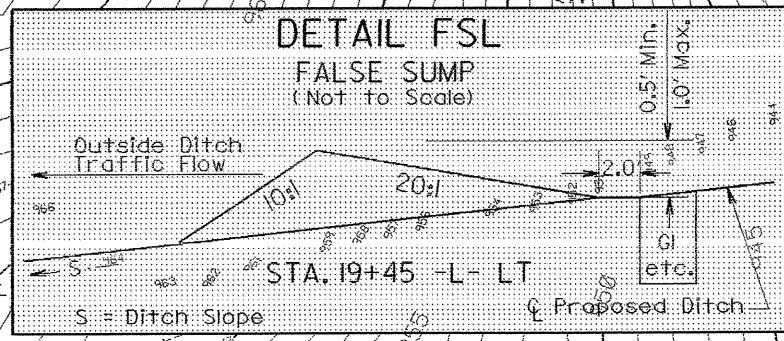
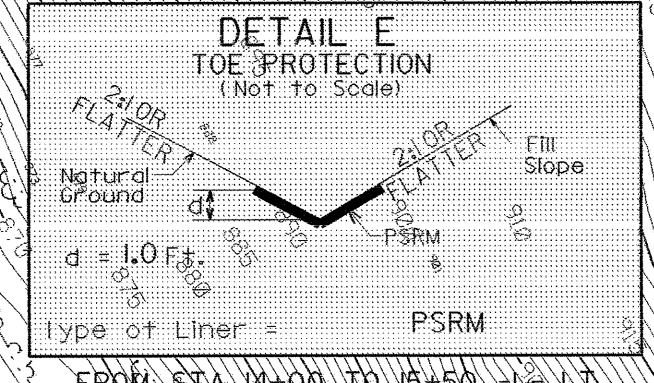
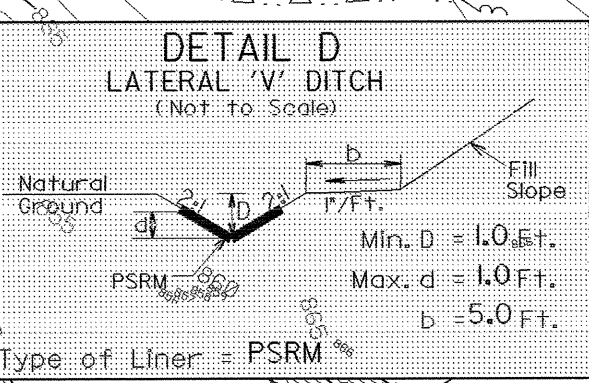
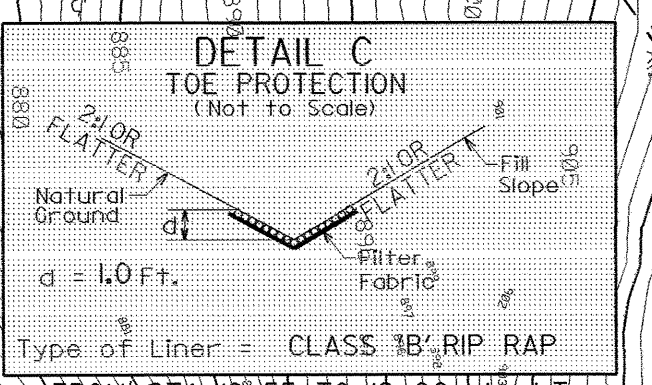
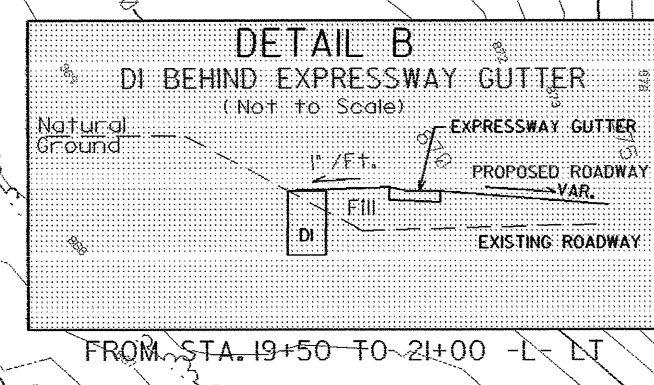
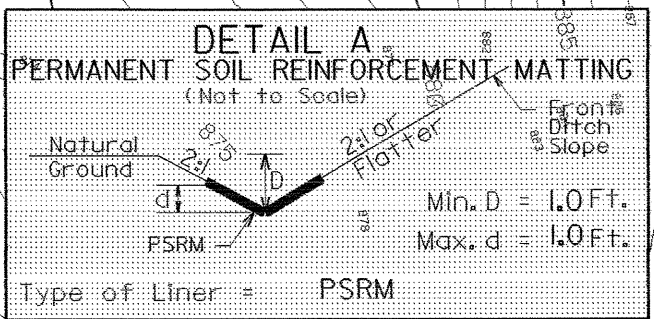
NOTE: PLACE TEMPORARY ROCK SEDIMENT DAMS TYPE - B AND TEMPORARY ROCK SILT CHECKS TYPE-A AT DRAINAGE OUTLETS.

CLEARING AND GRUBBING EROSION CONTROL FOR CONSTRUCTION SHEET 4

NOTE: HISTORIC STONE FOUNDATIONS WHICH ARE UNAVOIDABLY IMPACTED BY THE CONSTRUCTION ARE TO BE RELOCATED AT A SITE ON PARCEL 3 AS DIRECTED BY THE ENGINEER.



**END PROJECT B-3350**  
-L- STA. 21+00



#### DATUM DESCRIPTION

THE LOCALIZED COORDINATE SYSTEM DEVELOPED FOR THIS PROJECT IS BASED ON THE STATE-PLANE COORDINATES ESTABLISHED BY MONUMENT FOR MONUMENT B3350-1 WITH NAD 1983/95 STATE-PLANE GRID COORDINATES OF NORTHING: 837793.2790(11), EASTING: 1455032.3270(11) THE AVERAGE COMBINED GRID FACTOR USED ON THIS PROJECT (GROUND TO GRID) IS: 0.99992400 THE N. C. LAMBERT GRID BEARING AND LOCALIZED HORIZONTAL GROUND DISTANCE FROM B3350-1 TO A STATION 12+00 IS N 30° 23' 26.02 E - 8907.0 FT. ALL LINEAR DIMENSIONS ARE LOCALIZED HORIZONTAL DISTANCES VERTICAL DATUM USED IS NAVD-88

SEE SHEET 5 FOR PROFILES  
SEE SHEETS S-1 THRU S- FOR STRUCTURE PLANS