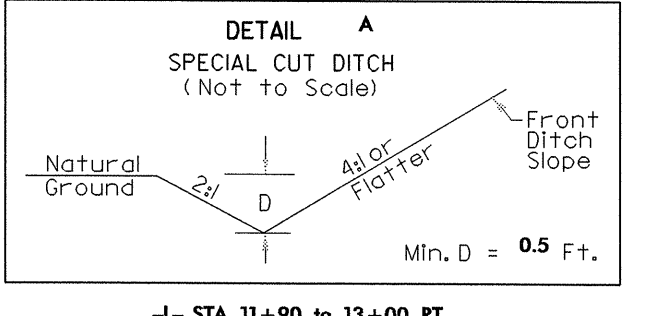
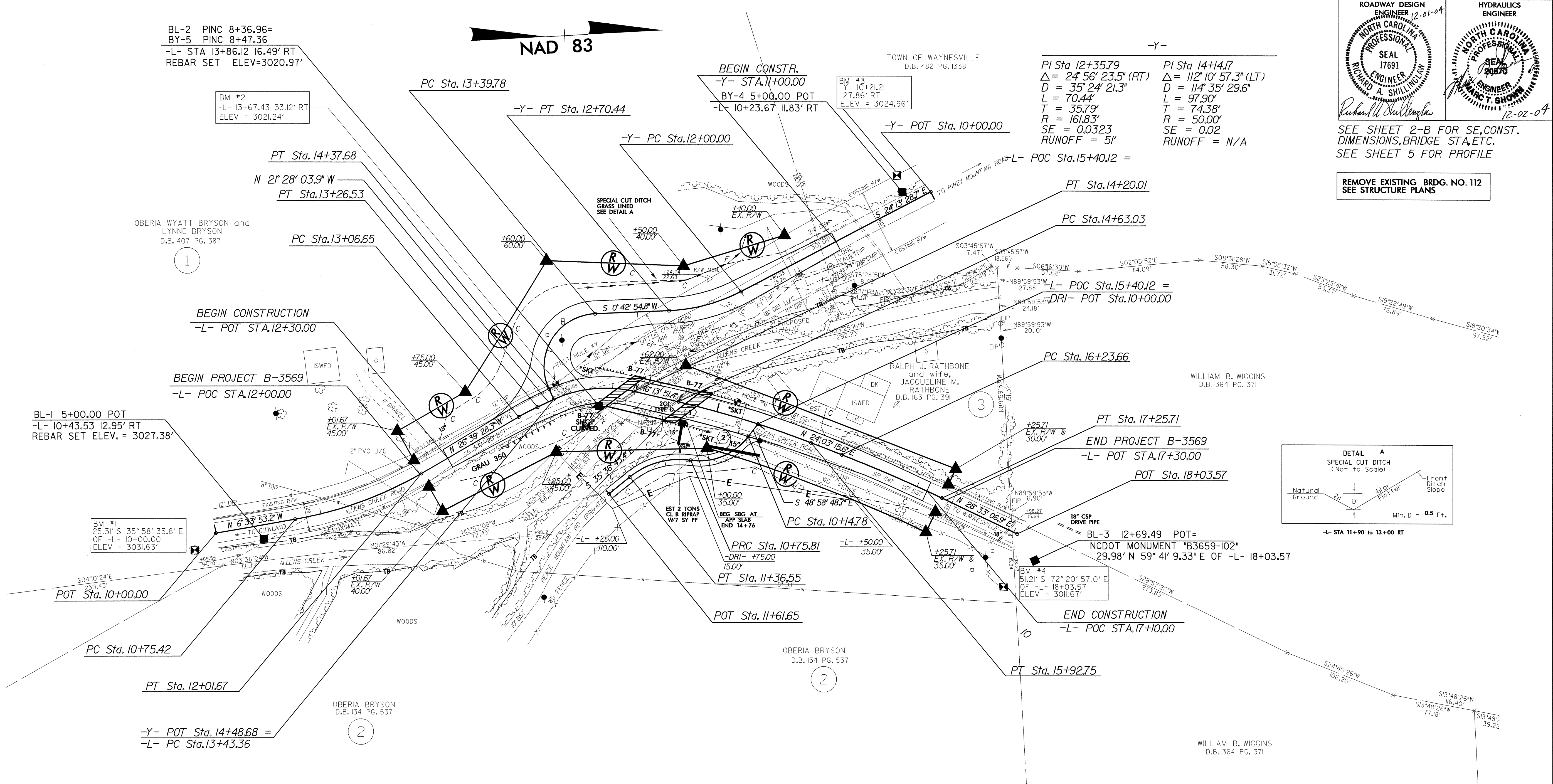


PROJECT REFERENCE NO. B-3659	SHEET NO. 4
RW SHEET NO.	
ROADWAY DESIGN ENGINEER 12-01-04 SEAL 17691 NORTH CAROLINA PROFESSIONAL ENGINEER THOMAS A. SHILLINGALE	HYDRAULICS ENGINEER 12-02-04 SEAL 20870 NORTH CAROLINA PROFESSIONAL ENGINEER MARC T. SHOWN

SEE SHEET 2-B FOR SE, CONST. DIMENSIONS, BRIDGE STA, ETC. SEE SHEET 5 FOR PROFILE

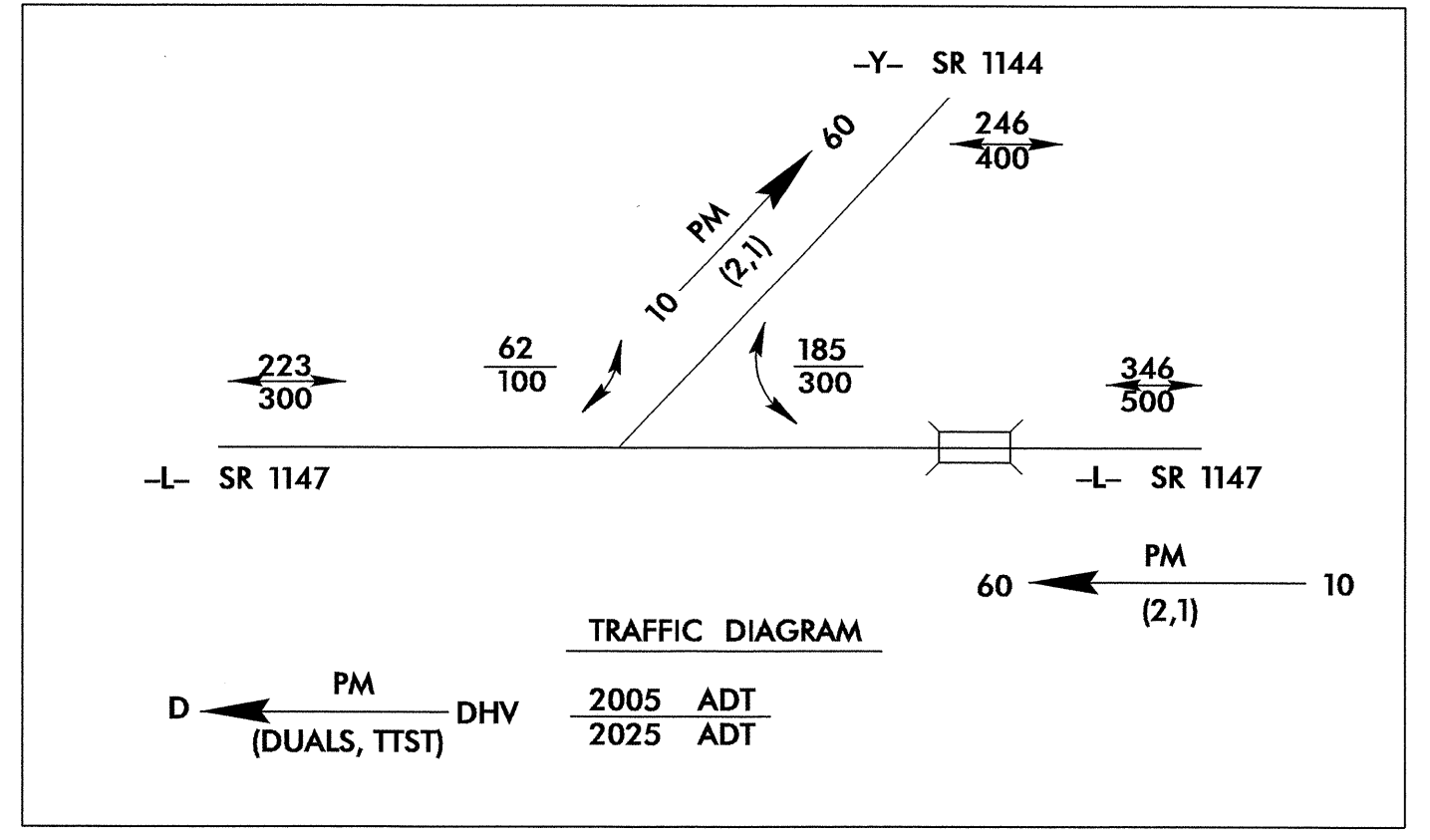
REMOVE EXISTING BRDG. NO. 112 SEE STRUCTURE PLANS

B.17/99



-L-					-DRI-	
PI Sta 11+39.20 Δ = 20° 05' 35.1" (LT) D = 15' 54' 55.8" L = 126.25' T = 63.78' R = 360.00'	PI Sta 13+16.59 Δ = 5' 11' 24.4" (RT) D = 26' 06' 41.9" L = 19.88' T = 9.95' R = 219.43' SE = 0.02 RUNOFF = N/A	PI Sta 13+83.13 Δ = 37° 41' 55.3" (RT) D = 49' 10' 51.3" L = 76.65' T = 39.77' R = 116.50' SE = 0.02 RUNOFF = N/A	PI Sta 15+27.99 Δ = 7° 49' 24.2" (RT) D = 6' 01' 52.1" L = 129.72' T = 64.96' R = 950.00' SE = 0.02 RUNOFF = N/A	PI Sta 16+74.71 Δ = 4° 29' 51.3" (RT) D = 4' 24' 26.5" L = 102.05' T = 51.05' R = 1,300.00' SE = EXIST	PI Sta 10+48.49 Δ = 60° 27' 55.6" (RT) D = 99' 04' 26.5" L = 61.03' T = 33.70' R = 57.83' SE = 0.02 RUNOFF = N/A	PI Sta 11+08.01 Δ = 47° 05' 50.4" (LT) D = 77' 32' 55.0" L = 60.73' T = 32.20' R = 73.88' SE = 0.02 RUNOFF = N/A

DESIGN EXCEPTION FOR DESIGN SPEED DS = 15 mph



REVISIONS

01-DEC-2004 10:44
R:\P\c\182659\4\psh
RSHillingale AT RD18717