

METRIC

PROJECT REFERENCE NO. U-2913B SHEET NO. UC-6

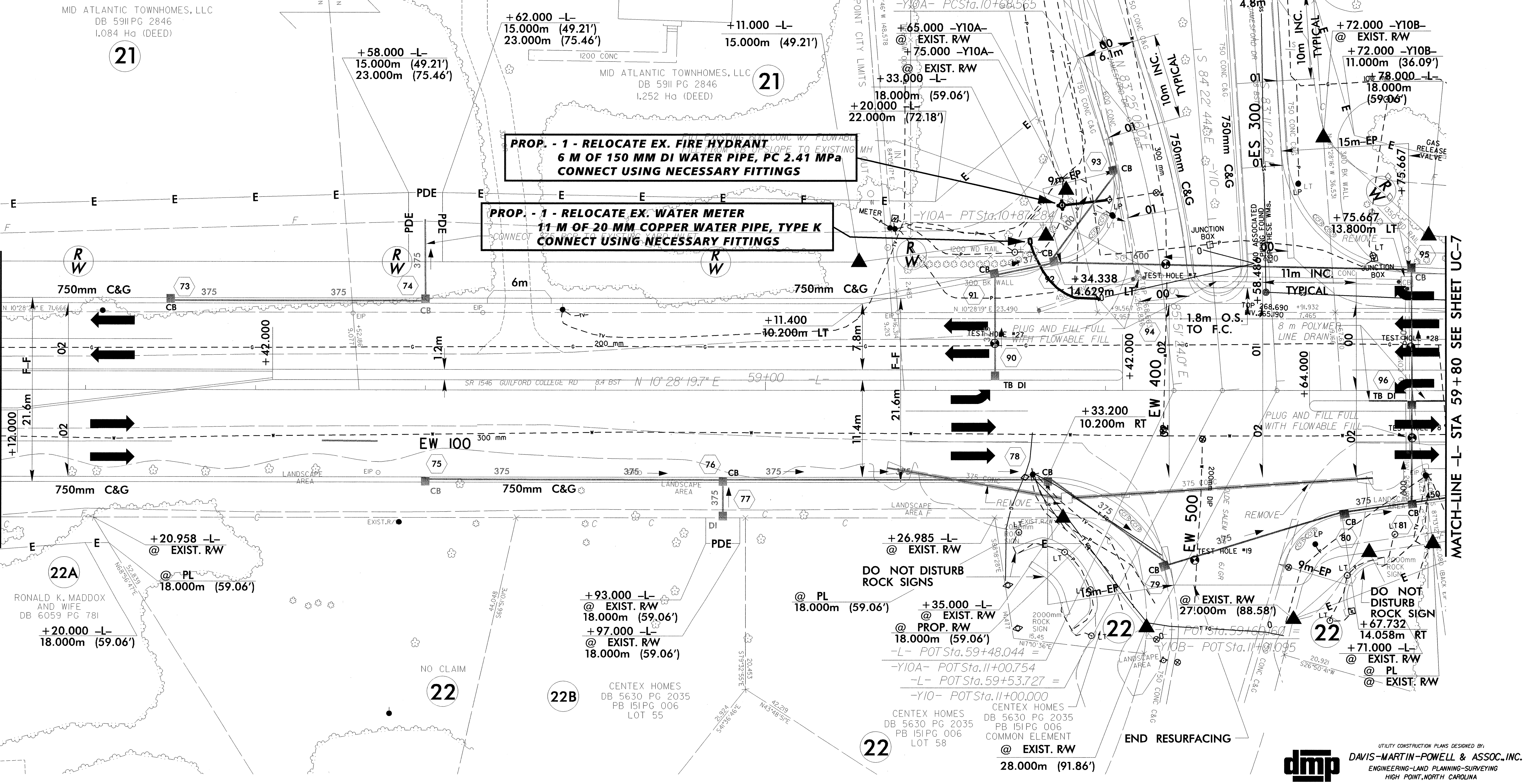
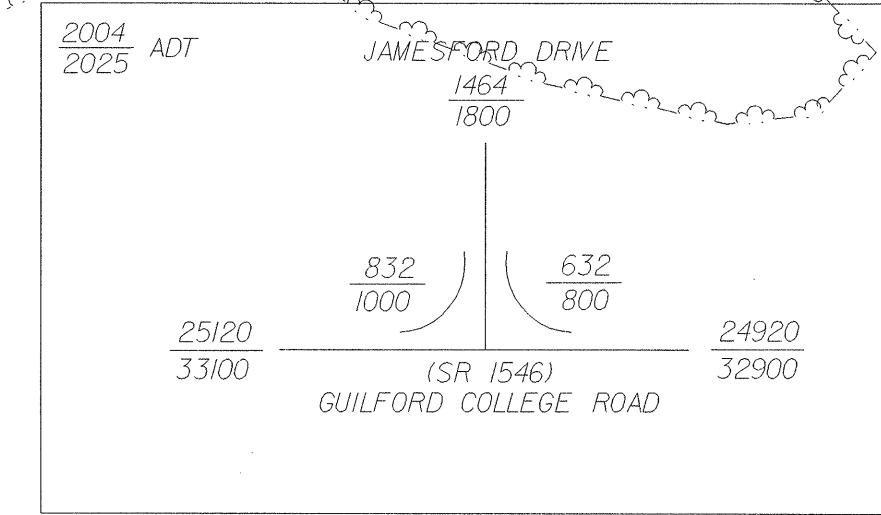
DESIGNED BY: DMP
 DRAWN BY: DMP
 CHECKED BY: DMP
 APPROVED BY:
 REVISED:

NORTH CAROLINA DEPARTMENT OF TRANSPORTATION

PROJECT SERVICES UNIT
 PHONE: (919) 250-4128
 FAX: (919) 250-4119

UTILITY CONSTRUCTION PLANS ONLY

ENGINEER
 ANDREW P. LAFRIK
 26457
 9-16-04



-Y10A-

PI Sta 10+08.849 Δ = 7° 36' 48.2" (RT) L = 17.673 T = 13.849 R = 133.000 SE = SEE PLANS	PI Sta 10+41.72 Δ = 25° 29' 51.8" (LT) L = 35.602 T = 18.100 R = 80.000 SE = SEE PLANS	PI Sta 10+77.952 Δ = 10° 43' 29.9" (RT) L = 18.719 T = 9.387 R = 100.000 SE = SEE PLANS
--	---	--

-Y10B-

PI Sta 10+12.805 Δ = 15° 02' 23.0" (RT) L = 25.462 T = 12.805 R = 97.000 SE = SEE PLANS	PI Sta 10+43.370 Δ = 24° 45' 42.7" (RT) L = 24.364 T = 12.211 R = 145.000 SE = SEE PLANS
--	---

**PROP. - 1 - RELOCATE EX. FIRE HYDRANT
 6 M OF 150 MM DI WATER PIPE, PC 2.41 MPa
 CONNECT USING NECESSARY FITTINGS**

**PROP. - 1 - RELOCATE EX. WATER METER
 11 M OF 20 MM COPPER WATER PIPE, TYPE K
 CONNECT USING NECESSARY FITTINGS**

MATCH-LINE -L- STA 58+10 SEE SHEET UC-5

MATCH-LINE -L- STA 59+80 SEE SHEET UC-7

RONALD K. MADDOX AND WIFE
 DB 6059 PG 781
 +20.000 -L-
 @ EXIST. RW
 18.000m (59.06')

+93.000 -L-
 @ EXIST. RW
 18.000m (59.06')

+97.000 -L-
 @ EXIST. RW
 18.000m (59.06')

+26.985 -L-
 @ EXIST. RW

+35.000 -L-
 @ EXIST. RW
 18.000m (59.06')

+33.200 -L-
 @ PROP. RW
 18.000m (59.06')

+71.000 -L-
 @ EXIST. RW

+71.000 -L-
 @ PL
 @ EXIST. RW

+67.732 -L-
 @ EXIST. RW
 14.058m RT