

DATUM DESCRIPTION

The Localized Coordinates used on this project are based on the State Plane Coordinates of GPS station "U-2913-8" established by NCDOT.




The NAD 83 State Plane Coordinates of "U-2913-8" are:
 Northing: 251880.5664 (m) Easting: 526,006.5789 (m)

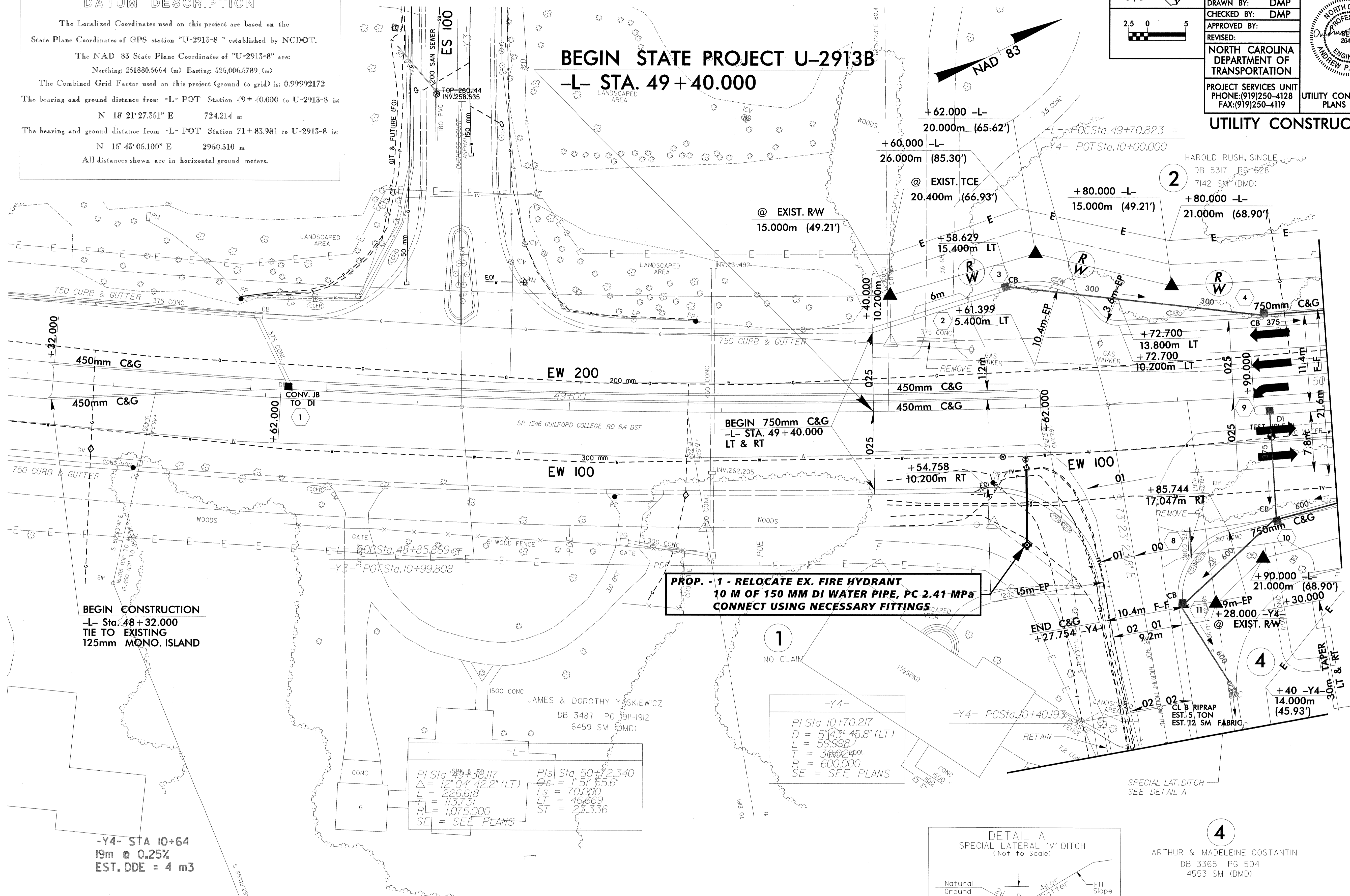
The Combined Grid Factor used on this project (ground to grid) is: 0.99992172

The bearing and ground distance from -L- POT Station 49+40.000 to U-2913-8 is:
 N 18° 21' 27.351" E 724.214 m

The bearing and ground distance from -L- POT Station 71+83.981 to U-2913-8 is:
 N 15° 45' 05.100" E 2960.510 m

All distances shown are in horizontal ground meters.

 2.5 0 5 	PROJECT REFERENCE NO.	SHEET NO.
	U-2913B	UC-2
	DESIGNED BY: DMP	
	DRAWN BY: DMP	
	CHECKED BY: DMP	
APPROVED BY:		
REVISED:	NORTH CAROLINA DEPARTMENT OF TRANSPORTATION PROJECT SERVICES UNIT PHONE: (919)250-4128 FAX: (919)250-4119	
UTILITY CONSTRUCTION		



NOTE: CONSTRUCTION LIMITS WILL BE CONTAINED WITHIN RW AND EASEMENTS PURCHASED UNDER TIP PROJECT U-2913A. THERE WILL BE NO ADDITIONAL CLAIMS ON PARCEL 1 (JAMES & JUNE STANCIJ) FOR TIP PROJECT U-2913B.

4
 ARTHUR & MADELEINE COSTANTINI
 DB 3365 PG 504
 4553 SM (DMD)

dmp
 UTILITY CONSTRUCTION PLANS DESIGNED BY:
DAVIS-MARTIN-POWELL & ASSOC., INC.
 ENGINEERING-LAND PLANNING-SURVEYING
 HIGH POINT, NORTH CAROLINA

FROM -Y4- STA 10+39 LT TO 10+59 LT