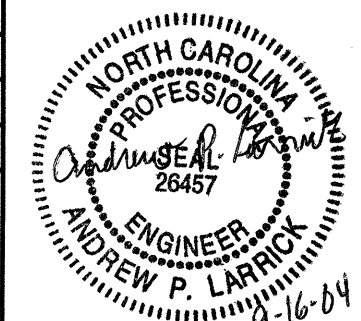
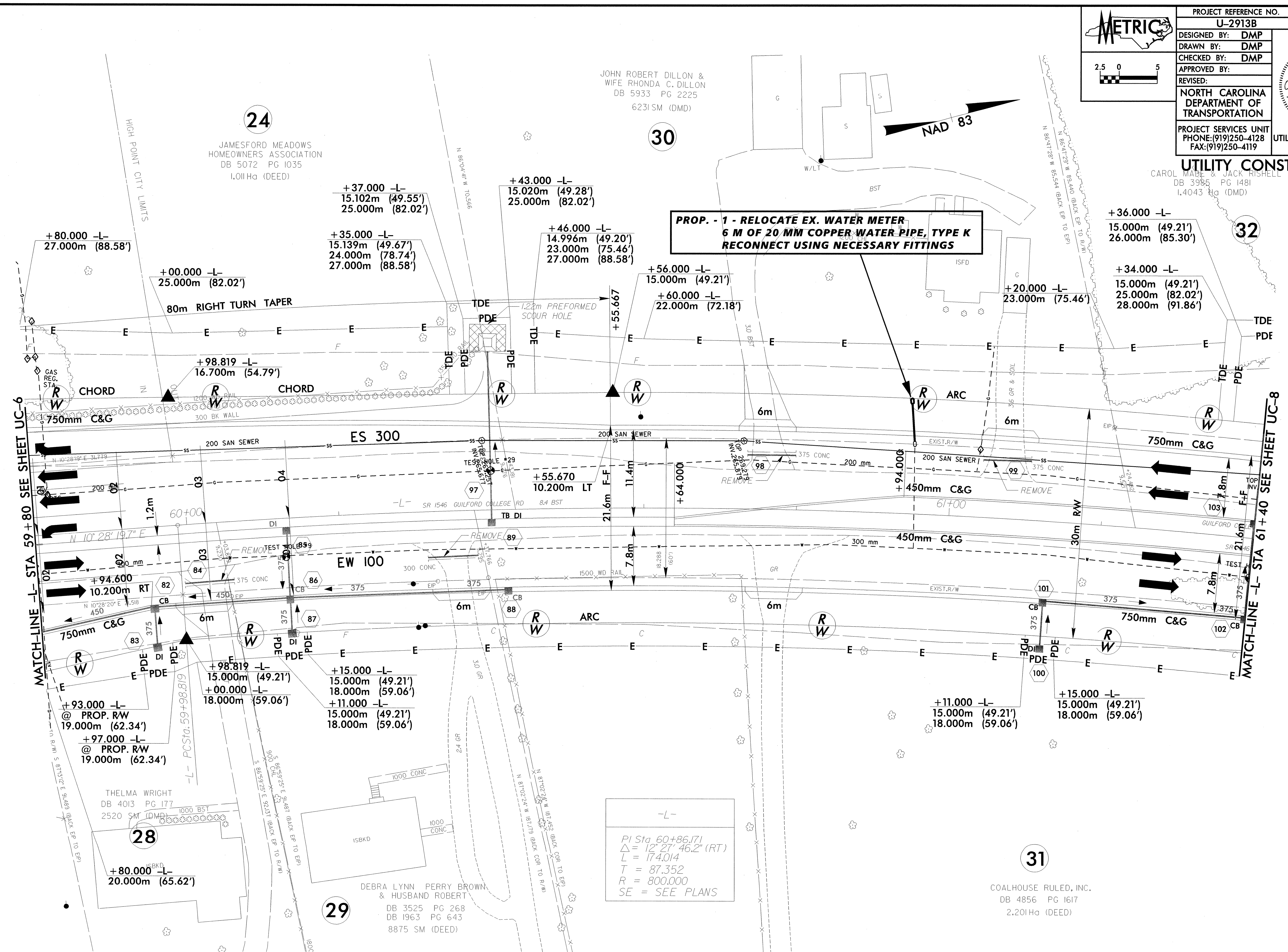
 2.5 0 5	PROJECT REFERENCE NO.	U-2913B	SHEET NO.	UC-7
	DESIGNED BY:	DMP		
	DRAWN BY:	DMP		
	CHECKED BY:	DMP		
	APPROVED BY:			
REVISED:	NORTH CAROLINA DEPARTMENT OF TRANSPORTATION			
PROJECT SERVICES UNIT		UTILITY CONSTRUCTION		PLANS ONLY
PHONE: (919)250-4128		CAROL WABER & JACK RISHELL		DB 3985 PG 1481
FAX: (919)250-4119		L.4043 Hq (DMD)		

JOHN ROBERT DILLON &
WIFE RHONDA C. DILLON
DB 5933 PG 2225
6231 SM (DMD)

CAROL WABER & JACK RISHELL
DB 3985 PG 1481
L.4043 Hq (DMD)

**PROP. - 1 - RELOCATE EX. WATER METER
6 M OF 20 MM COPPER WATER PIPE, TYPE K
RECONNECT USING NECESSARY FITTINGS**



MATCH-LINE -L- STA 59 + 80 SEE SHEET UC-6

MATCH-LINE -L- STA 61 + 40 SEE SHEET UC-8

-L-
 Pi Sta 60+86.171
 $\Delta = 12^\circ 27' 46.2''$ (RT)
 $L = 174.014$
 $T = 87.352$
 $R = 800.000$
 $SE = \text{SEE PLANS}$

COALHOUSE RULED, INC.
DB 4856 PG 1617
2.201 Hq (DEED)

+93.000 -L-
19.000m (62.34')
 @ PROP. RW
 +97.000 -L-
19.000m (62.34')
 @ PROP. RW

THELMA WRIGHT
DB 4013 PG 177
2520 SM (DMD)

DEBRA LYNN PERRY BROWN
& HUSBAND ROBERT
DB 3525 PG 268
DB 1963 PG 643
8875 SM (DEED)

+80.000 -L-
20.000m (65.62')

+98.819 -L-
15.000m (49.21')
 +00.000 -L-
18.000m (59.06')

+15.000 -L-
15.000m (49.21')
 +11.000 -L-
15.000m (49.21')
 18.000m (59.06')

+11.000 -L-
15.000m (49.21')
 18.000m (59.06')

+15.000 -L-
15.000m (49.21')
 18.000m (59.06')

+80.000 -L-
27.000m (88.58')

+00.000 -L-
25.000m (82.02')

+35.000 -L-
15.139m (49.67')
 24.000m (78.74')
 27.000m (88.58')

+43.000 -L-
15.020m (49.28')
 25.000m (82.02')

+46.000 -L-
14.996m (49.20')
 23.000m (75.46')
 27.000m (88.58')

+56.000 -L-
15.000m (49.21')
 +60.000 -L-
22.000m (72.18')

+36.000 -L-
15.000m (49.21')
 26.000m (85.30')

+34.000 -L-
15.000m (49.21')
 25.000m (82.02')
 28.000m (91.86')

11/15/2004 10:51:12 AM
 UC-7.dwg
 11/15/2004 10:51:12 AM