

PROJECT REFERENCE NO.	SHEET NO.
U-2913B	UC-8
DESIGNED BY: DMP	
DRAWN BY: DMP	
CHECKED BY: DMP	
APPROVED BY:	
REVISOR:	
<b>NORTH CAROLINA DEPARTMENT OF TRANSPORTATION</b>	
PROJECT SERVICES UNIT PHONE: (919) 250-4128 FAX: (919) 250-4119	UTILITY CONSTRUCTION PLANS ONLY

LIBERTY LIFE INSURANCE CO.  
DB 3676 PG 398-401  
1658 SM (DMD)

BILLY & YOLANDA CASPER  
DB 4162 PG 1828  
1871 SM (DMD)

JAMESFORD MEADOWS  
HOMEOWNERS ASSOCIATION  
PB 103 PG 62  
1066 SM (DMD)

SAMER NAZZAL, SINGLE  
DB 5920 PG 1531  
4879 SM (DMD)

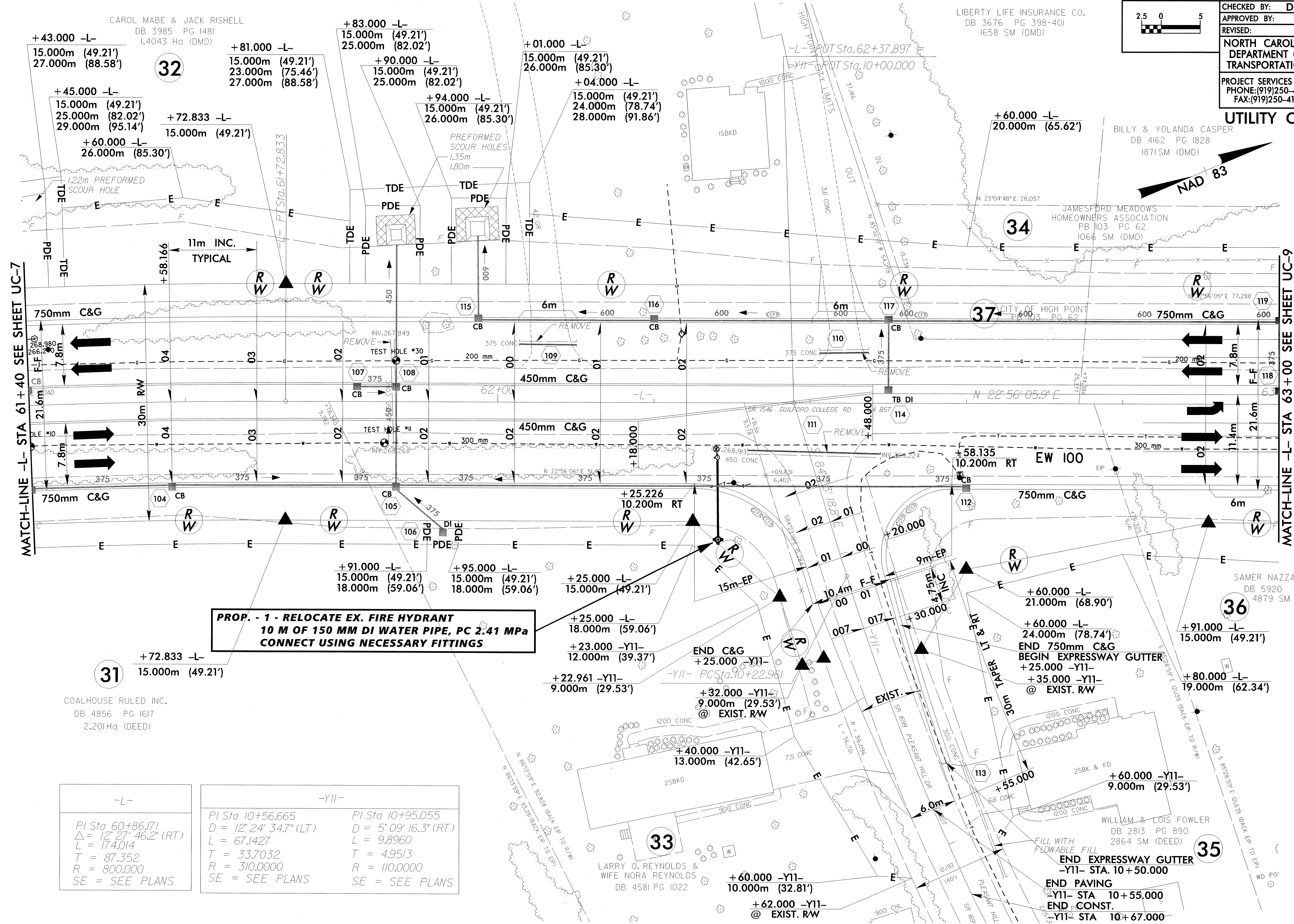
WILLIAM & LOIS FOWLER  
DB 2813 PG 890  
2864 SM (DEED)

LARRY O. REYNOLDS &  
WIFE NORA REYNOLDS  
DB 4581 PG 1022

CAROL MABE & JACK RISHELL  
DB 3985 PG 1481  
14043 Ha (DMD)

MATCH-LINE -L- STA 61+40 SEE SHEET UC-7

MATCH-LINE -L- STA 63+00 SEE SHEET UC-9



**PROP. - 1 - RELOCATE EX. FIRE HYDRANT  
10 M OF 150 MM DI WATER PIPE, PC 2.41 MPa  
CONNECT USING NECESSARY FITTINGS**

-L-	-Y11-	-Y12-
PI Sta 60+86.171 Δ = 12° 27' 46.2" (RT) L = 174.014 T = 87.352 R = 800.000 SE = SEE PLANS	PI Sta 10+56.665 D = 12° 24' 34.7" (LT) L = 67.1427 T = 33.7032 R = 310.000 SE = SEE PLANS	PI Sta 10+95.055 D = 5° 09' 16.3" (RT) L = 9.8960 T = 4.9513 R = 110.000 SE = SEE PLANS

-L-	-Y11-	-Y12-
+43.000 -L- 15.000m (49.21') 27.000m (88.58')	+81.000 -L- 15.000m (49.21') 23.000m (75.46') 27.000m (88.58')	+83.000 -L- 15.000m (49.21') 25.000m (82.02')
+45.000 -L- 15.000m (49.21') 25.000m (82.02') 29.000m (95.14')	+72.833 -L- 15.000m (49.21')	+90.000 -L- 15.000m (49.21') 25.000m (82.02')
+60.000 -L- 26.000m (85.30')		+94.000 -L- 15.000m (49.21') 25.000m (85.30')
		+01.000 -L- 15.000m (49.21') 26.000m (85.30')
		+04.000 -L- 15.000m (49.21') 24.000m (78.74') 28.000m (91.86')
		+60.000 -L- 20.000m (65.62')
		+58.135 10.200m RT
		+25.226 10.200m RT
		+25.000 -L- 18.000m (59.06')
		+23.000 -Y11- 12.000m (39.37')
		+22.961 -Y11- 9.000m (29.53')
		+25.000 -L- 18.000m (59.06')
		+23.000 -Y11- 12.000m (39.37')
		+32.000 -Y11- 9.000m (29.53') @ EXIST. RW
		+40.000 -Y11- 13.000m (42.65')
		+60.000 -Y11- 10.000m (32.81')
		+62.000 -Y11- @ EXIST. RW
		+60.000 -L- 21.000m (68.90')
		+60.000 -L- 24.000m (78.74')
		+25.000 -Y11- @ EXIST. RW
		+35.000 -Y11- @ EXIST. RW
		+80.000 -L- 19.000m (62.34')
		+91.000 -L- 15.000m (49.21')
		+60.000 -Y11- 9.000m (29.53')
		+60.000 -Y11- 9.000m (29.53')

COALHOUSE RULED INC.  
DB 4856 PG 1617  
2.201Ha (DEED)