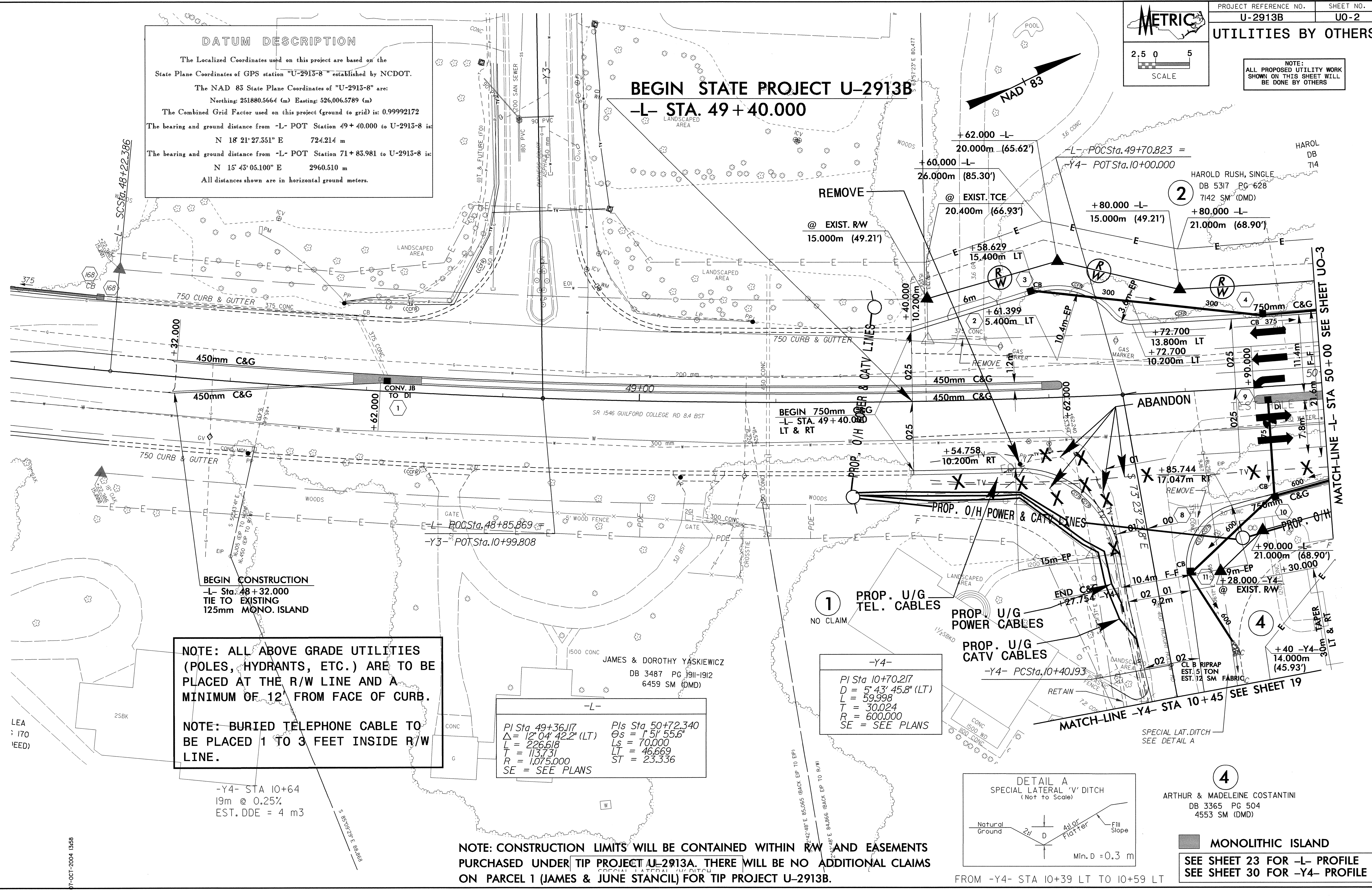
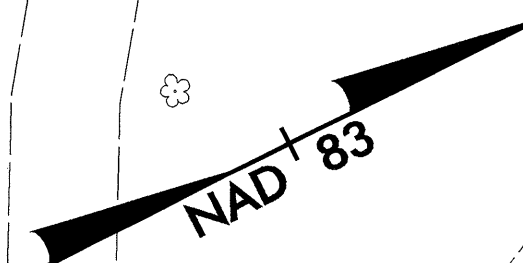
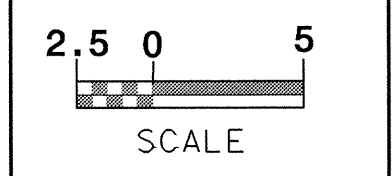


DATUM DESCRIPTION
 The Localized Coordinates used on this project are based on the State Plane Coordinates of GPS station "U-2913-8" established by NCDOT.
 The NAD 83 State Plane Coordinates of "U-2913-8" are:
 Northing: 251880.5664 (m) Easting: 526,006.5789 (m)
 The Combined Grid Factor used on this project (ground to grid) is: 0.99992172
 The bearing and ground distance from -L- POT Station 49+40.000 to U-2913-8 is:
 N 18° 21' 27.351" E 724.214 m
 The bearing and ground distance from -L- POT Station 71+85.981 to U-2913-8 is:
 N 15° 43' 05.100" E 2960.510 m
 All distances shown are in horizontal ground meters.

BEGIN STATE PROJECT U-2913B
-L- STA. 49+40.000



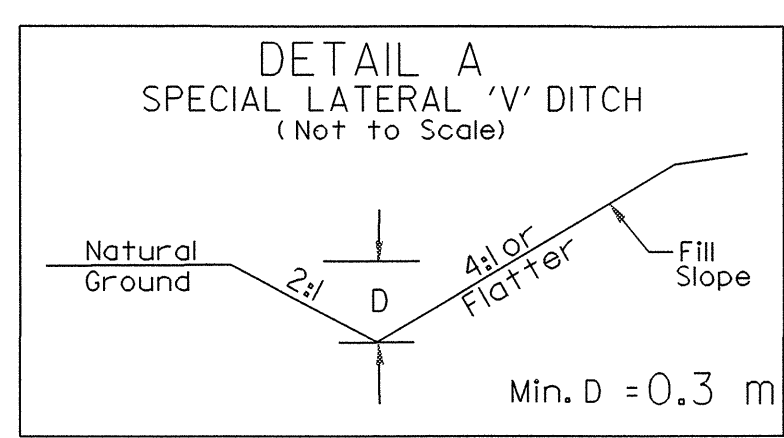
NOTE: ALL ABOVE GRADE UTILITIES (POLES, HYDRANTS, ETC.) ARE TO BE PLACED AT THE R/W LINE AND A MINIMUM OF 12' FROM FACE OF CURB.
NOTE: BURIED TELEPHONE CABLE TO BE PLACED 1 TO 3 FEET INSIDE R/W LINE.

-L-
 PI Sta 49+36.117 PI Sta 50+72.340
 $\Delta = 12^{\circ} 04' 42.2"$ (LT) $\Theta_s = 1^{\circ} 51' 55.6"$
 $L = 226.618$ $L_s = 70.000$
 $T = 113.731$ $LT = 46.669$
 $R = 1,075.000$ $ST = 23.336$
 SE = SEE PLANS

-Y4-
 PI Sta 10+70.217
 $D = 5^{\circ} 43' 45.8"$ (LT)
 $L = 59.998$
 $T = 30.024$
 $R = 600.000$
 SE = SEE PLANS

-Y4- STA 10+64
 19m @ 0.25%
 EST. DDE = 4 m3

NOTE: CONSTRUCTION LIMITS WILL BE CONTAINED WITHIN RW AND EASEMENTS PURCHASED UNDER TIP PROJECT U-2913A. THERE WILL BE NO ADDITIONAL CLAIMS ON PARCEL 1 (JAMES & JUNE STANCIJ) FOR TIP PROJECT U-2913B.



4
 ARTHUR & MADELEINE COSTANTINI
 DB 3365 PG 504
 4553 SM (DMD)

MONOLITHIC ISLAND
 SEE SHEET 23 FOR -L- PROFILE
 SEE SHEET 30 FOR -Y4- PROFILE

07-OCT-2004 13:58 H:\u2913bs_uo2.psh
 07-OCT-2004 13:58

MATCH-LINE -L- STA 50+00 SEE SHEET UO-3
 MATCH-LINE -Y4- STA 10+45 SEE SHEET 19