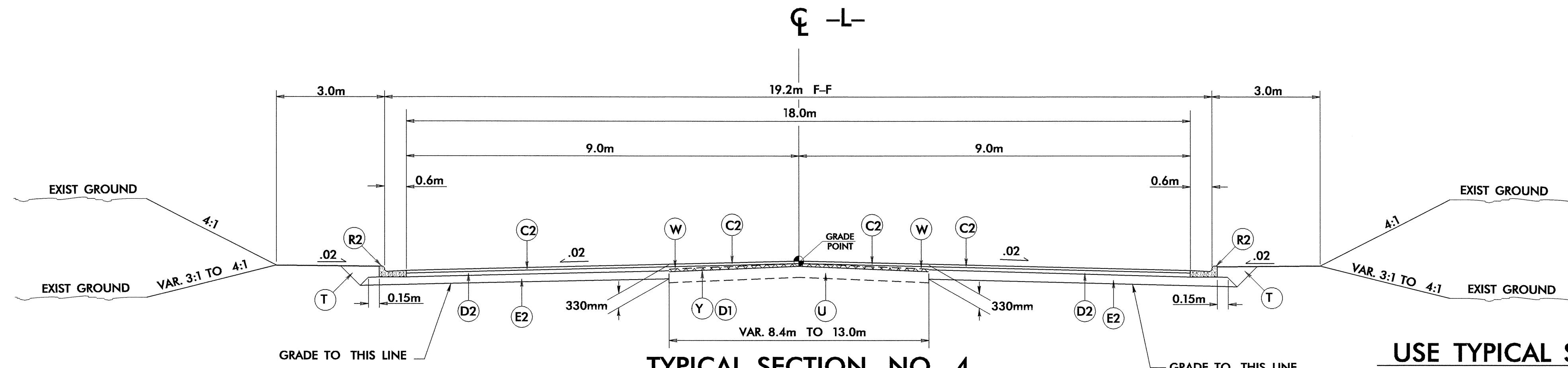


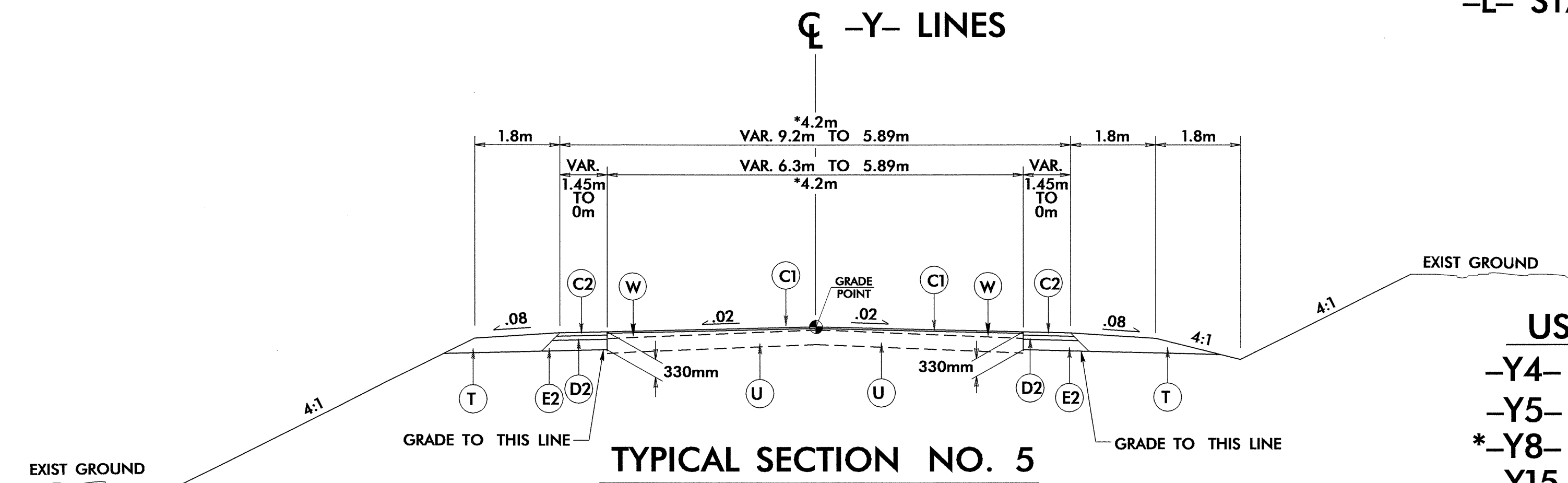


PROJECT REFERENCE NO. U-2913B	SHEET NO. 2-B
ROADWAY DESIGN ENGINEER JAMES A. SPEER 10/20/04	PAVEMENT DESIGN ENGINEER CHI-CHI CHEN 10/21/04



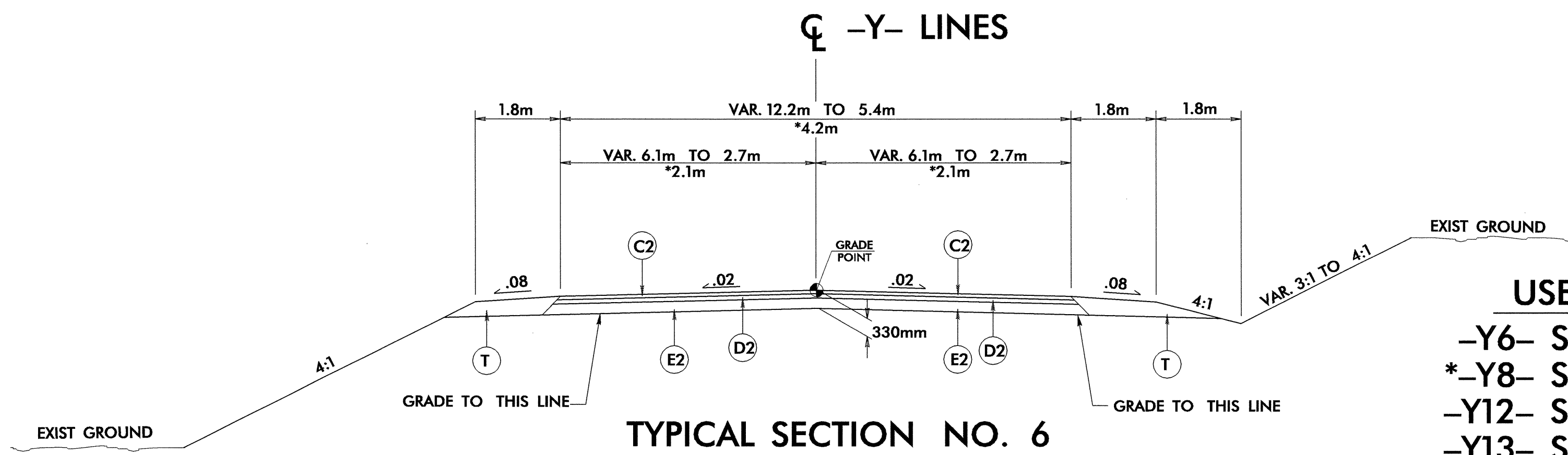
TYPICAL SECTION NO. 4

USE TYPICAL SECTION NO. 4
 -L- STA. 71+28 TO STA. 71+55.427 LT.
 -L- STA. 71+28 TO STA. 71+83.981 RT.



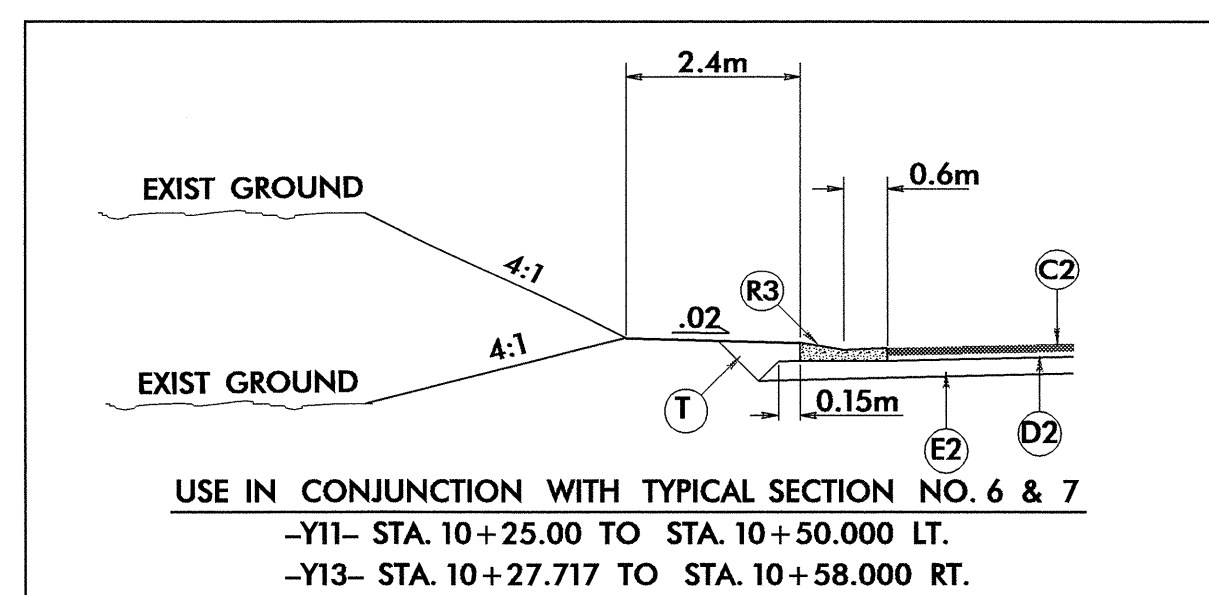
TYPICAL SECTION NO. 5

USE TYPICAL SECTION NO. 5
 -Y4- STA. 10+27.754 TO STA. 10+60
 -Y5- STA. 10+26.528 TO STA. 10+30
 *-Y8- STA. 10+16.275 TO STA. 10+20
 -Y15- STA. 10+60 TO STA. 10+76 RT.

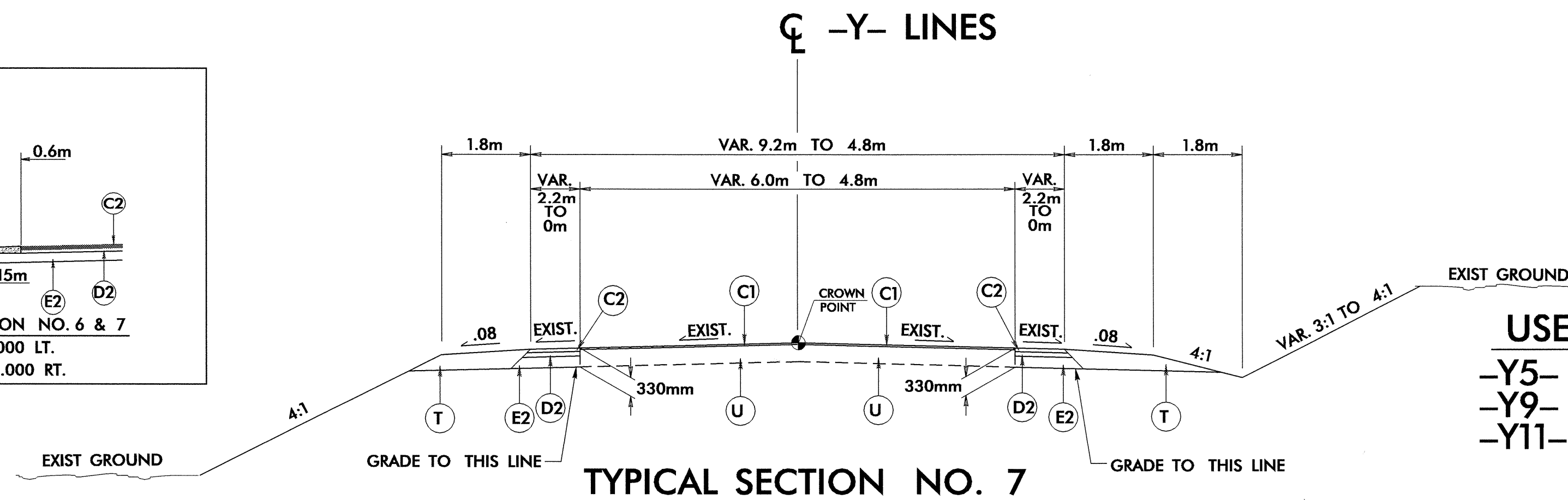


TYPICAL SECTION NO. 6

USE TYPICAL SECTION NO. 6
 -Y6- STA. 10+40 TO STA. 10+71.86
 *-Y8- STA. 10+20 TO STA. 10+29
 -Y12- STA. 10+39 TO STA. 10+69
 -Y13- STA. 10+27.717 TO STA. 10+58



USE IN CONJUNCTION WITH TYPICAL SECTION NO. 6 & 7
 -Y11- STA. 10+25.00 TO STA. 10+50.000 LT.
 -Y13- STA. 10+27.717 TO STA. 10+58.000 RT.



TYPICAL SECTION NO. 7

USE TYPICAL SECTION NO. 7
 -Y5- STA. 10+30 TO STA. 10+57
 -Y9- STA. 10+43 TO STA. 10+73.221
 -Y11- STA. 10+25.00 TO STA. 10+55

PAVEMENT SCHEDULE

C1	40 mm S9.5C
C2	80 mm S9.5C
C3	VAR. DEPTH S9.5C
D1	65 mm I19.0C
D2	100 mm I19.0C
D3	VAR. DEPTH I19.0C
E1	100 mm B25.0C
E2	150 mm B25.0C
E3	VAR. DEPTH B25.0C
R1	450 mm CONC. C AND G
R2	750 mm CONC. C AND G
R3	CONCRETE EXPRESSWAY GUTTER
R4	125 mm MONO. CONC. ISLAND (KEYED IN)
S	100 mm CONC. SIDEWALK
T	EARTH MATERIAL
U	EXISTING PAVEMENT
W	VAR. DEPTH ASPH. PAVM'T. (SEE WEDGING DETAIL)
Y	MILL EXISTING PAVEMENT

22-SEP-2004 14:48 RD212399 2-B.dwg DWG Gardner