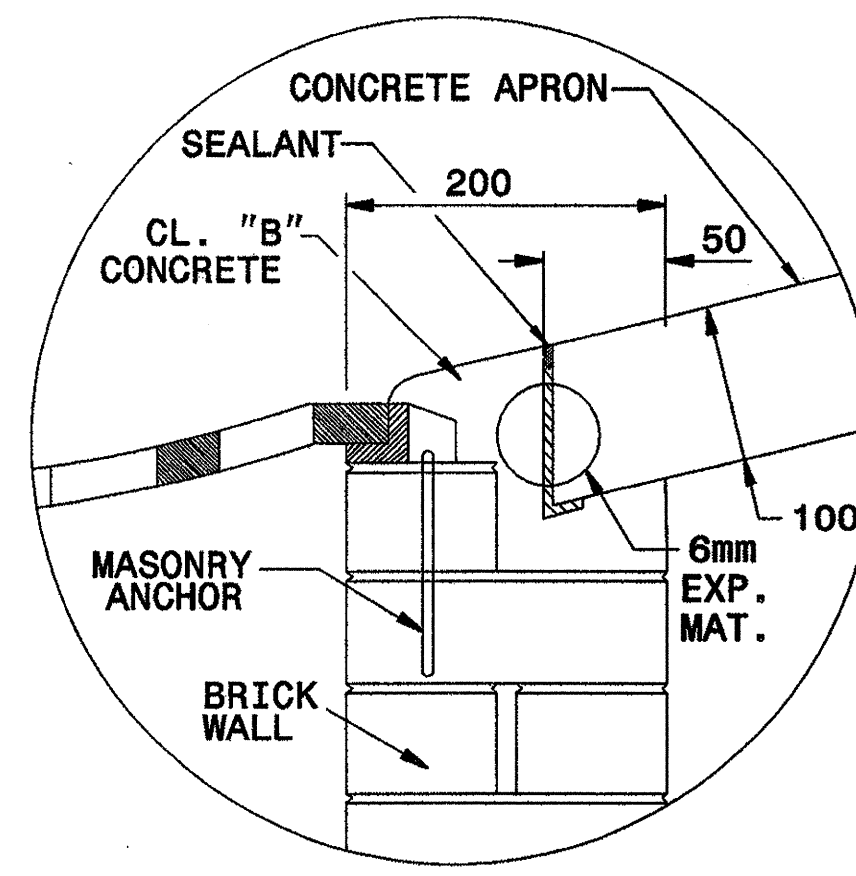


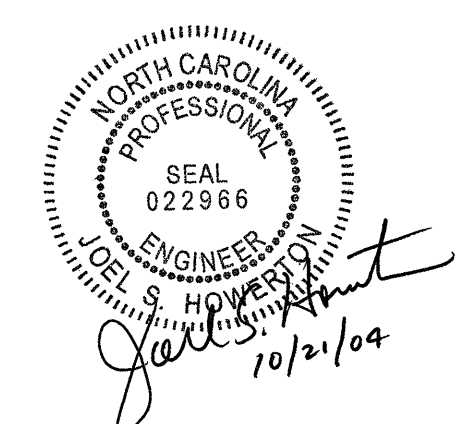
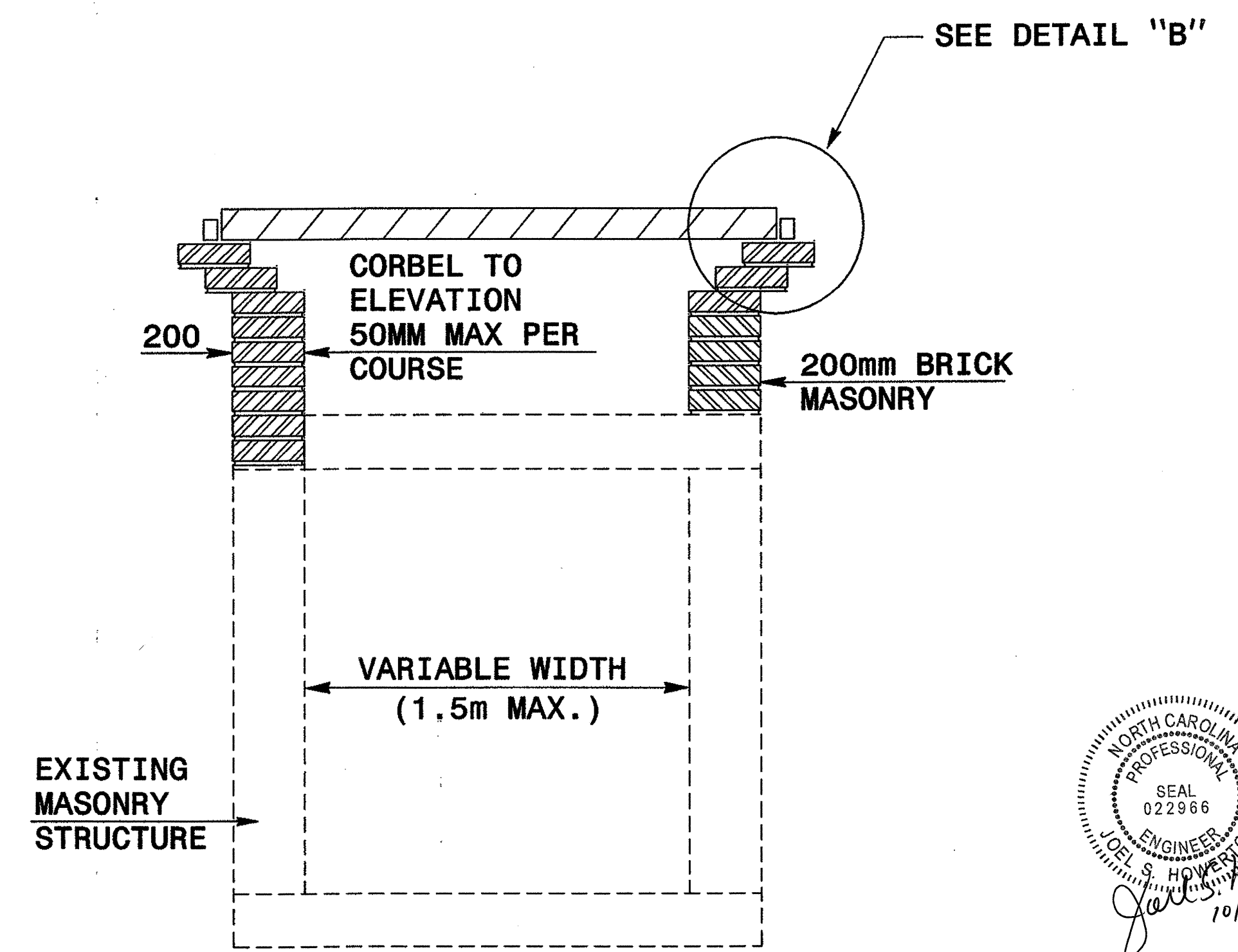
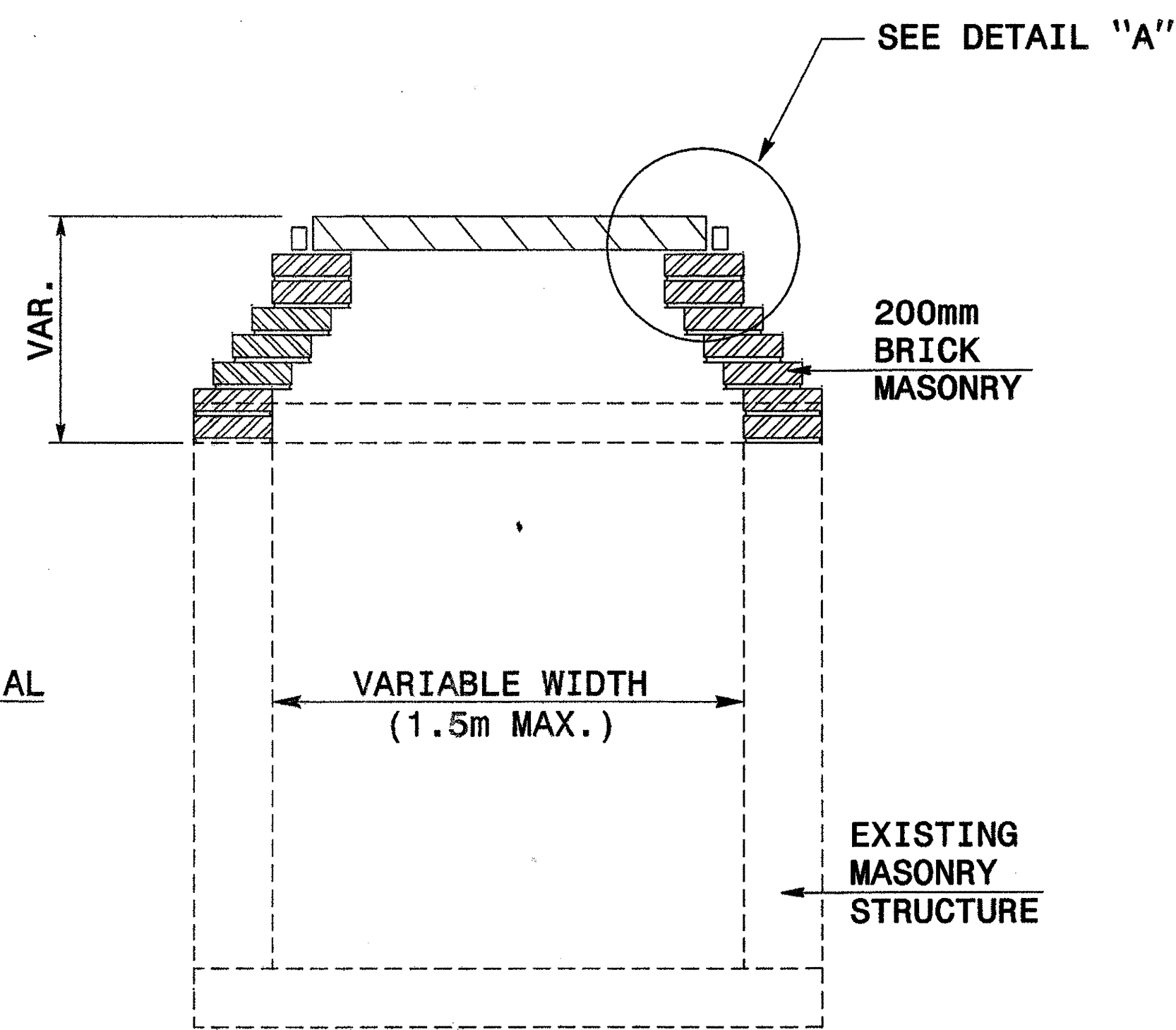
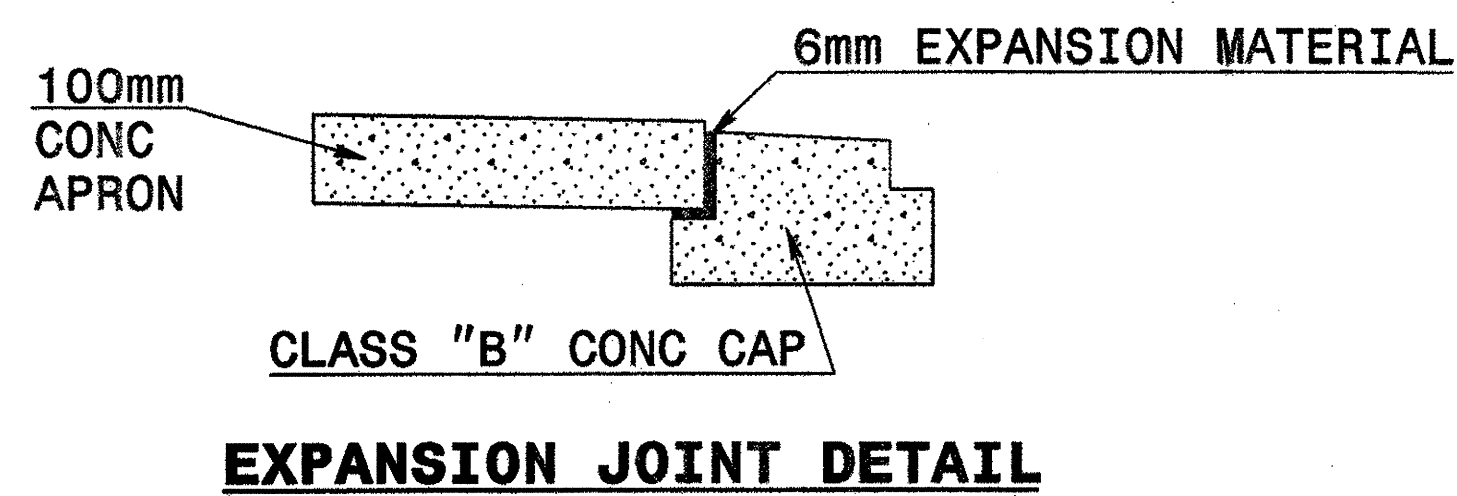
DETAIL "A"
FOR DROP INLETS



DETAIL "B"
FOR MEDIAN DROP INLETS

GENERAL NOTES:

- CONSTRUCT IN ACCORDANCE WITH SECTION 859 OF THE STANDARD SPECIFICATIONS.
- USE CLASS B CONCRETE.
- THE DIMENSIONS FOR THE EXISTING BOXES ARE APPROXIMATE AND MAY VARY SLIGHTLY.
- JUMBO BRICK WILL BE PERMITTED. CONCRETE BRICK OR 100mm SOLID CONCRETE BLOCK MAY BE USED IN LIEU OF CLAY BRICK.
- INCLUDE 450mm CONCRETE APRON IN UNIT PRICE BID PER EACH, CONVERT EXISTING CATCH BASIN TO DROP INLET.
- SPECIAL DESIGN IS REQUIRED FOR USE UNDER PAVEMENT.
- CONFIRM DIMENSIONS ON EACH INDIVIDUAL FRAME & GRATE PROPOSAL.
- SEE STD. DRAWING 840.25 FOR MASONRY ANCHORAGE.



DESIGN SERVICES UNIT STANDARDS AND SPECIAL DESIGN	
Office 919-250-4128 FAX 919-250-4119	
DETAIL TO CONVERT EXISTING CATCH BASIN OR JUNCTION BOX TO DROP INLET	
ORIGINAL BY: T. Spell	DATE: 1-99
MODIFIED BY: T. Spell	DATE: FEB. 2000
CHECKED BY: <i>[Signature]</i>	DATE: 2-00
FILE SPEC.: 051241/usr/details/metric/stand/chtod101.dgn	