

METRIC

PROJECT REFERENCE NO. U-2913B SHEET NO. 4
R/W SHEET NO.

ROADWAY DESIGN ENGINEER: NORTH CAROLINA PROFESSIONAL SEAL 14571
HYDRAULICS ENGINEER: NORTH CAROLINA PROFESSIONAL SEAL 19775

CONST. REV.
R/W REV.

10/20/04

DATUM DESCRIPTION

The Localized Coordinates used on this project are based on the State Plane Coordinates of GPS station "U-2913-8" established by NCDOT.

The NAD 85 State Plane Coordinates of "U-2913-8" are:
Northing: 251880.5664 (m) Easting: 526,006.5789 (m)

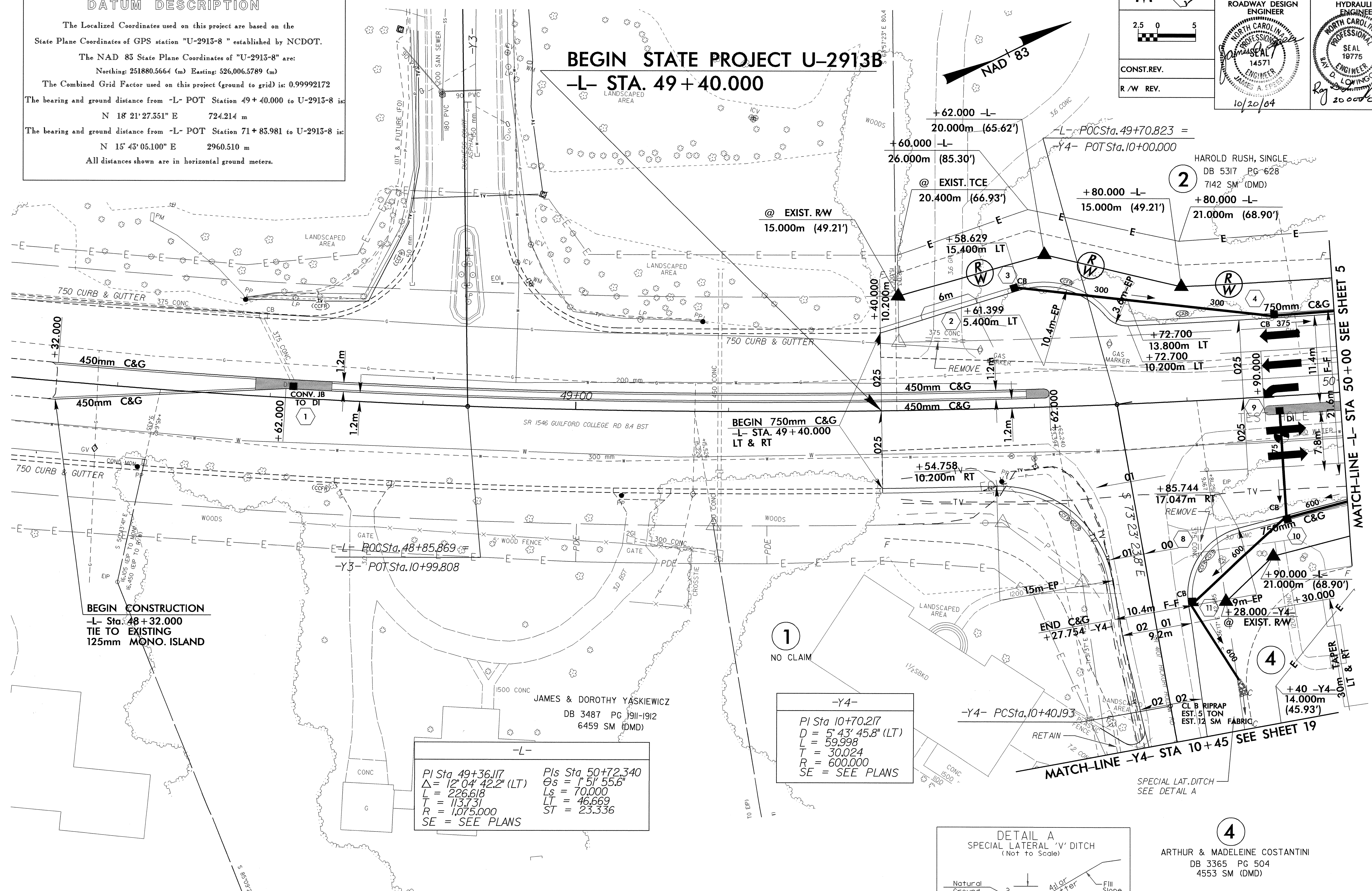
The Combined Grid Factor used on this project (ground to grid) is: 0.99992172

The bearing and ground distance from -L- POT Station 49+40.000 to U-2913-8 is:
N 18° 21' 27.351" E 724.214 m

The bearing and ground distance from -L- POT Station 71+85.981 to U-2913-8 is:
N 15° 43' 05.100" E 2960.510 m

All distances shown are in horizontal ground meters.

BEGIN STATE PROJECT U-2913B
-L- STA. 49+40.000



BEGIN CONSTRUCTION
-L- Sta. 48+32.000
TIE TO EXISTING
125mm MONO. ISLAND

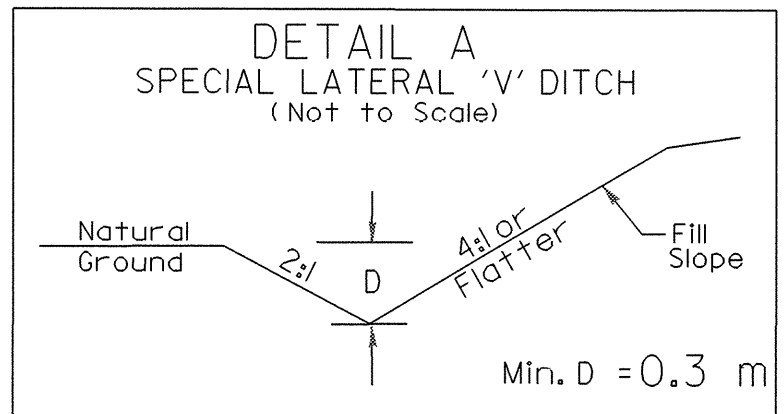
-L-

PI Sta 49+36.117	PIs Sta 50+72.340
$\Delta = 12^\circ 04' 42.2"$ (LT)	$\Theta_s = 1^\circ 51' 55.6"$
L = 226.618	Ls = 70.000
T = 113.731	LT = 46.669
R = 1,075.000	ST = 23.336

SE = SEE PLANS

-Y4-

PI Sta 10+70.217
D = 5° 43' 45.8" (LT)
L = 59.998
T = 30.024
R = 600.000
SE = SEE PLANS



4

ARTHUR & MADELINE COSTANTINI
DB 3365 PG 504
4553 SM (DMD)

MONOLITHIC ISLAND
SEE SHEET 24 FOR -L- PROFILE
SEE SHEET 31 FOR -Y4- PROFILE

NOTE: CONSTRUCTION LIMITS WILL BE CONTAINED WITHIN R/W AND EASEMENTS PURCHASED UNDER TIP PROJECT U-2913A. THERE WILL BE NO ADDITIONAL CLAIMS ON PARCEL 1 (JAMES & JUNE STANCIL) FOR TIP PROJECT U-2913B.

REVISIONS

19 OCT 2004 09:38
DWG: RD212399
DWG: RD212399