

METRIC

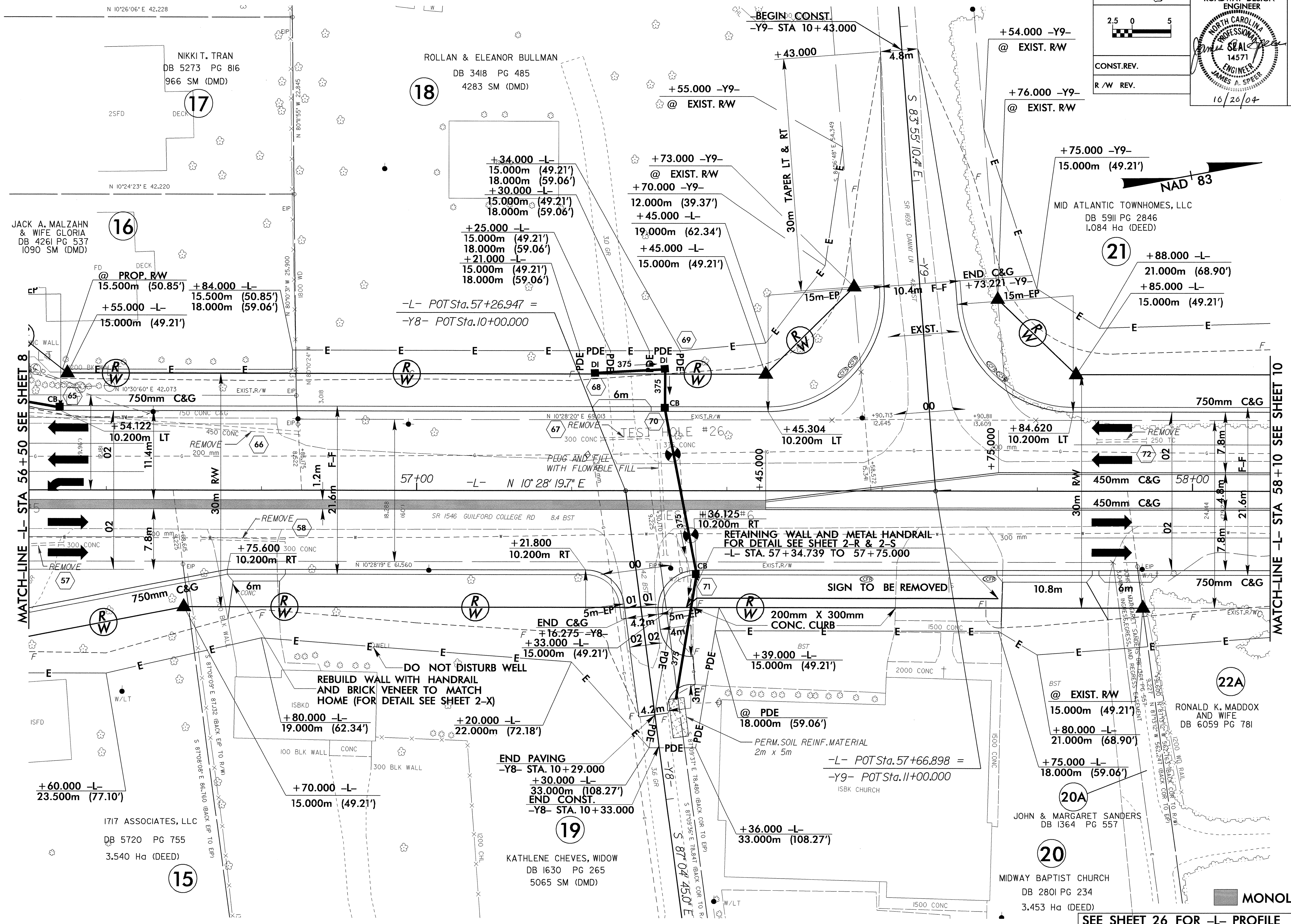
PROJECT REFERENCE NO. U-2913B SHEET NO. 9

R/W SHEET NO.

ROADWAY DESIGN ENGINEER
NORTH CAROLINA PROFESSIONAL SEAL 14571
JAMES A. SPEER
10/20/04

HYDRAULICS ENGINEER
NORTH CAROLINA PROFESSIONAL SEAL 19775
RAY D. BERRY
10/20/04

CONST. REV.
R/W REV.



REVISIONS

MATCH-LINE -L- STA 56+50 SEE SHEET 8

MATCH-LINE -L- STA 58+10 SEE SHEET 10

NOTE: FACE OF RETAINING WALL @ BACK OF BERM

SEE SHEET 26 FOR -L- PROFILE
SEE SHEET 33 FOR -Y8- PROFILE
SEE SHEET 34 FOR -Y9- PROFILE
SEE SHEET TCP-8 FOR TEMPORARY PAVEMENT