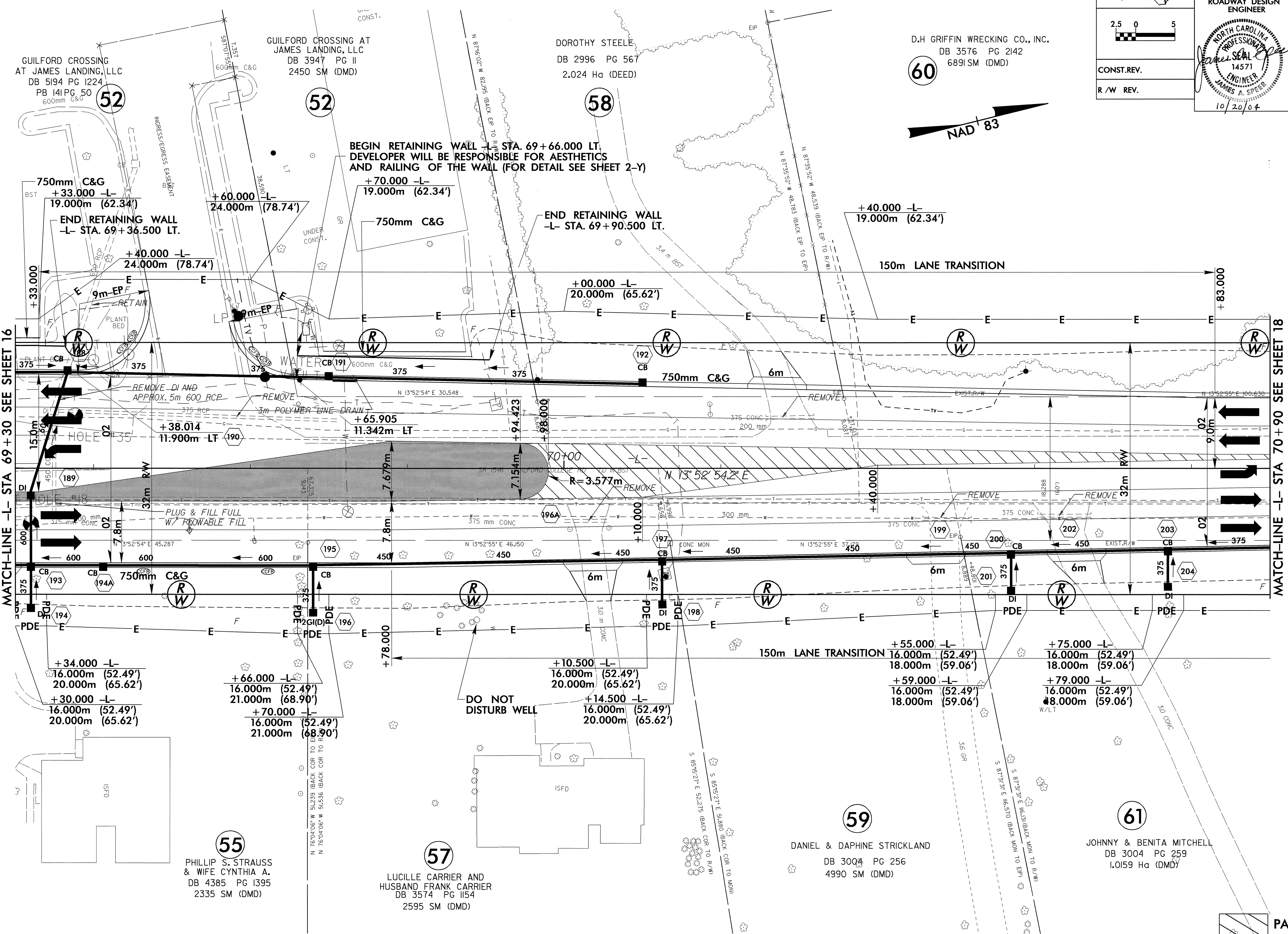
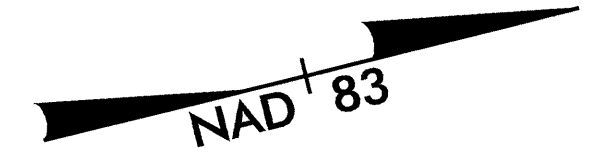


	PROJECT REFERENCE NO.	SHEET NO.
	U-2913B	17
	R/W SHEET NO.	
	ROADWAY DESIGN ENGINEER	HYDRAULICS ENGINEER
		CONST. REV.
R/W REV.		

D.H. GRIFFIN WRECKING CO., INC.
DB 3576 PG 2142
6891 SM (DMD)

60



MATCH-LINE -L- STA 69+30 SEE SHEET 16

MATCH-LINE -L- STA 70+90 SEE SHEET 18

GUILFORD CROSSING AT JAMES LANDING, LLC
DB 5194 PG 1224
PB 141 PG 50
600mm C&G

GUILFORD CROSSING AT JAMES LANDING, LLC
DB 3947 PG II
2450 SM (DMD)

DOROTHY STEELE
DB 2996 PG 567
2.024 Ha (DEED)

55
PHILLIP S. STRAUSS & WIFE CYNTHIA A.
DB 4385 PG 1395
2335 SM (DMD)

57
LUCILLE CARRIER AND HUSBAND FRANK CARRIER
DB 3574 PG 1154
2595 SM (DMD)

59
DANIEL & DAPHNE STRICKLAND
DB 3004 PG 256
4990 SM (DMD)

61
JOHNNY & BENITA MITCHELL
DB 3004 PG 259
1.0159 Ha (DMD)

BEGIN RETAINING WALL -L- STA. 69+66.000 LT.
DEVELOPER WILL BE RESPONSIBLE FOR AESTHETICS AND RAILING OF THE WALL (FOR DETAIL SEE SHEET 2-Y)

END RETAINING WALL -L- STA. 69+90.500 LT.

150m LANE TRANSITION

150m LANE TRANSITION

DO NOT DISTURB WELL

NOTE: FACE OF RETAINING WALL @ BACK OF BERM

PAINT STRIPING
 MONOLITHIC ISLAND
SEE SHEET 30 FOR -L- PROFILE

REVISIONS

8/17/04
14-OCT-2004 11:17 AM
RD212399 Thursday October 14 2004 u2913bs17.m DWG Gardner rd-07oc34