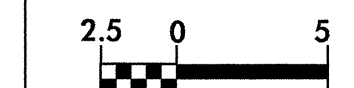


PROJECT REFERENCE NO. U-2913B	SHEET NO. 18
R/W SHEET NO.	
ROADWAY DESIGN ENGINEER James A. Speer NORTH CAROLINA PROFESSIONAL ENGINEER SEAL 14571 10/20/04	HYDRAULICS ENGINEER Ray D. Livingston NORTH CAROLINA PROFESSIONAL ENGINEER SEAL 19776 20 OCT 04
CONST. REV.	
R/W REV.	



HARLIN S. CATO III
DB 3539 PG 58
7228 SM (DMD)

-L-	-Y15-
PI Sta 71+97.298	PI Sta 10+63.144
$\Delta = 1^{\circ}53'21.7"$ (LT)	$D = 10^{\circ}23'17.0"$ (RT)
L = 122.009	L = 45.326
T = 61.010	T = 22.726
R = 3,700.000	R = 250.000
SE = SEE PLANS	SE = EXIST.

D.H. GRIFFIN WRECKING CO., INC.
DB 3576 PG 2142
6891 SM (DMD)

BEGIN CONST.
-Y15- STA. 10+60.000

END 750mm C & G
-Y15- STA. 10+76.000

+70.000 -Y15-
@ EXIST. RW
+75.000 -Y15-
@ EXIST. RW

+36.288 -L-
19.000m (62.34')
+36.288 -L-
16.000m (52.49')

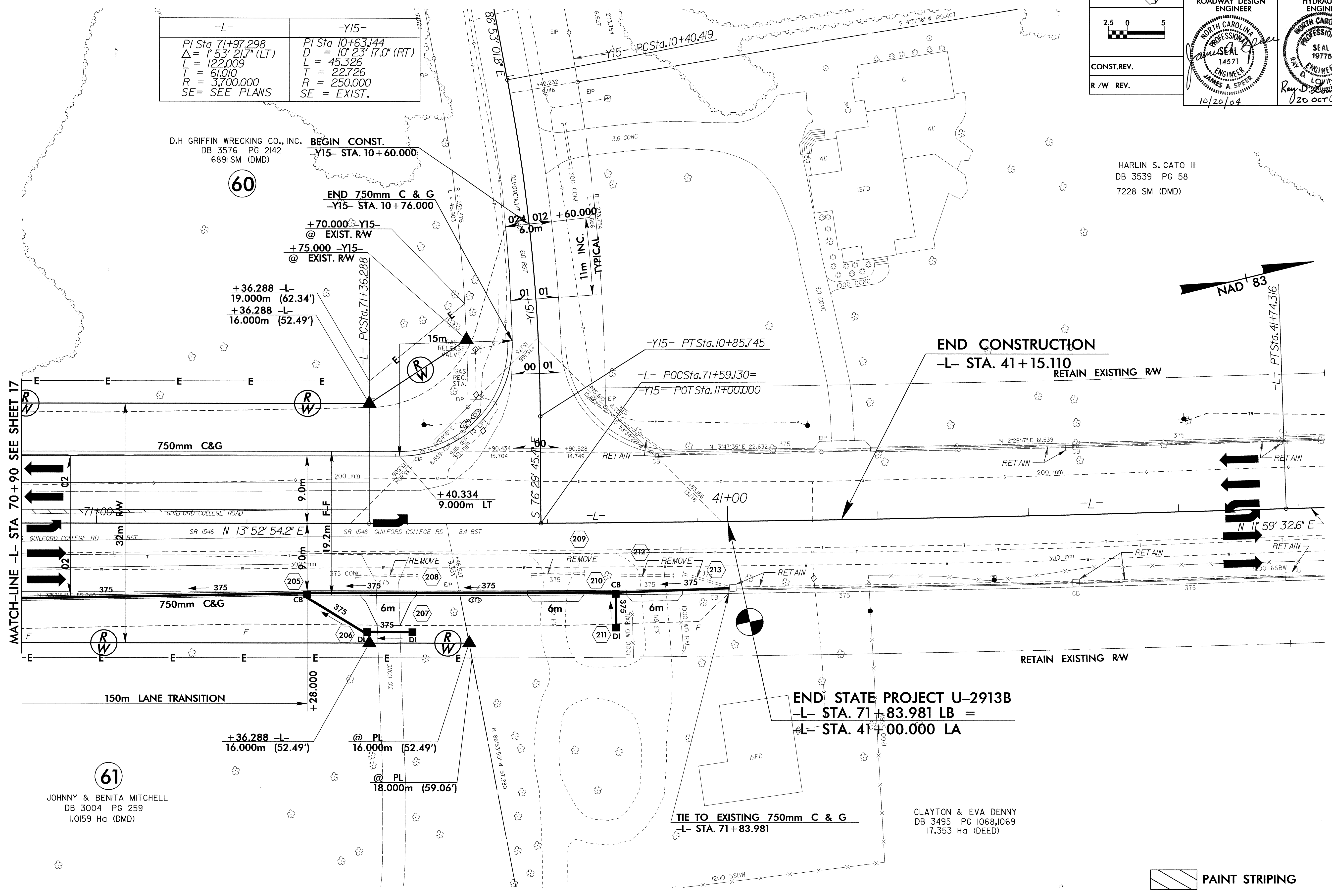
END CONSTRUCTION
-L- STA. 41+15.110
RETAIN EXISTING RW

END STATE PROJECT U-2913B
-L- STA. 71+83.981 LB =
-L- STA. 41+00.000 LA

TIE TO EXISTING 750mm C & G
-L- STA. 71+83.981

CLAYTON & EVA DENNY
DB 3495 PG 1068,1069
17.353 Ha (DEED)

MATCH-LINE -L- STA 70+90 SEE SHEET 17



PAINT STRIPING

SEE SHEET 31 FOR -L- PROFILE
SEE SHEET 39 FOR -Y15- PROFILE

REVISIONS

06-AUG-2004 08:28 2004-08-06 10:23:39 RD212399