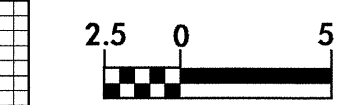


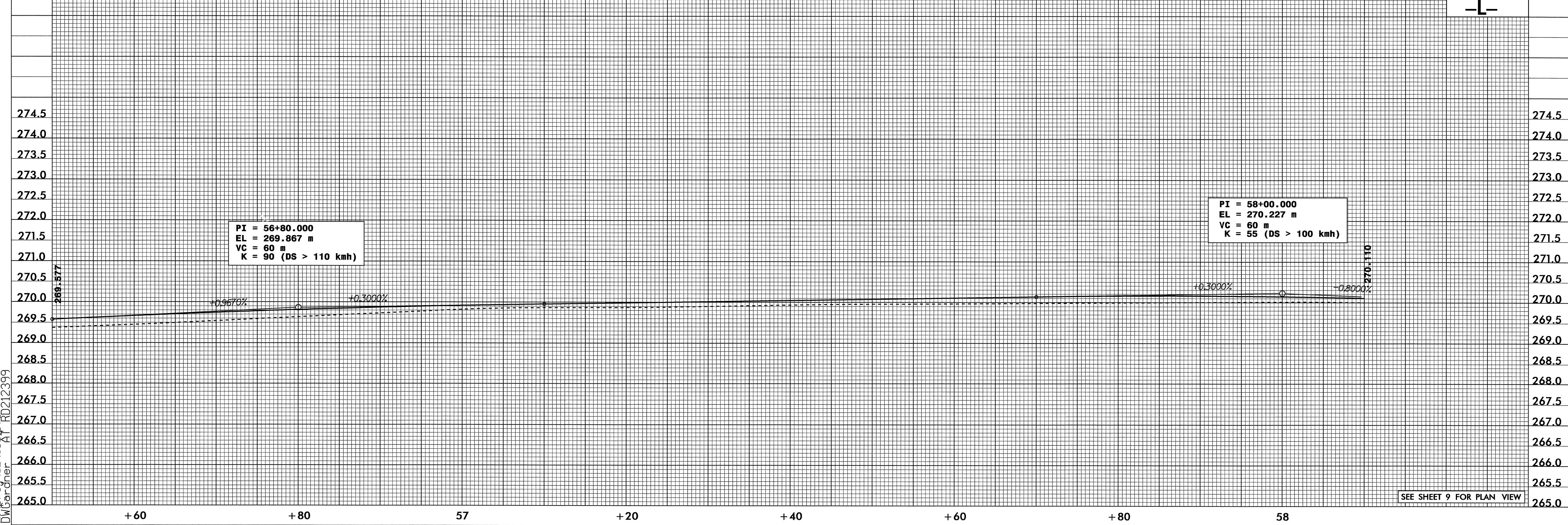
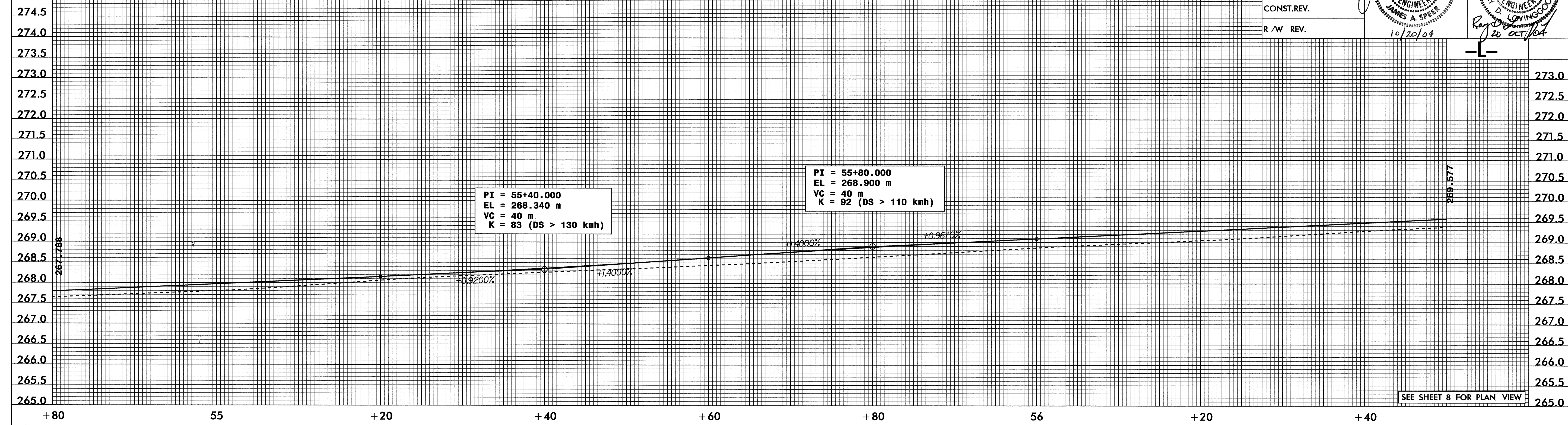
6/09/04



PROJECT REFERENCE NO. U-2913B	SHEET NO. 26
ROADWAY DESIGN ENGINEER	HYDRAULICS ENGINEER
<i>[Signature]</i> 14571 ENGINEER JAMES A. SPEER	<i>[Signature]</i> 19775 ENGINEER RAY D. LIVINGOOD
CONST. REV.	
R/W REV.	



BM #6 - NAIL IN BASE OF 450MM OAK
28.999M RT -L- STA. 55+97.181



06-AUG-2004 10:31
R:\proj\uz2913b\pfl1
DWGardner At RD212399