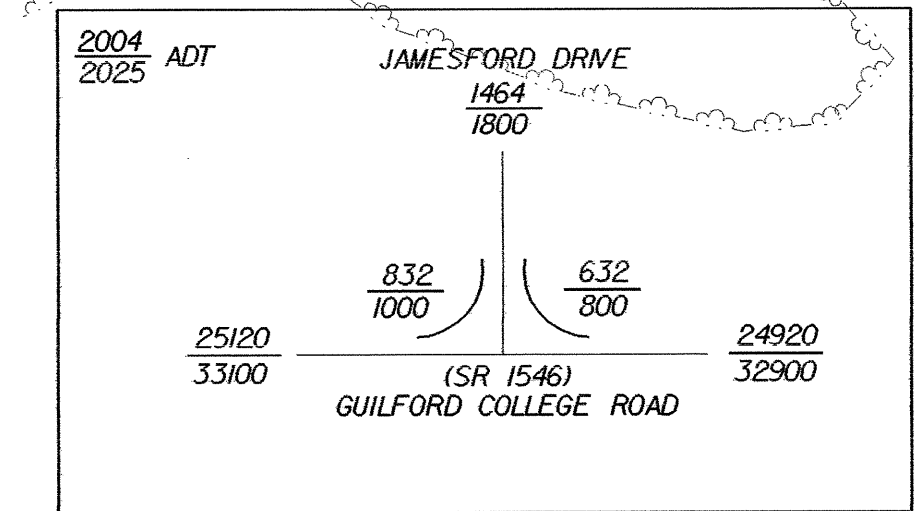


| -Y10A-                               |                                       |                                       |
|--------------------------------------|---------------------------------------|---------------------------------------|
| PI Sta 10+08.849                     | PI Sta 10+41.172                      | PI Sta 10+77.952                      |
| $\Delta = 7^{\circ} 36' 48.2''$ (RT) | $\Delta = 25^{\circ} 29' 51.8''$ (LT) | $\Delta = 10^{\circ} 43' 29.9''$ (RT) |
| L = 17.673                           | L = 35.602                            | L = 18.719                            |
| T = 8.849                            | T = 18.100                            | T = 9.387                             |
| R = 133.000                          | R = 80.000                            | R = 100.000                           |
| SE = SEE PLANS                       | SE = SEE PLANS                        | SE = SEE PLANS                        |

| -Y10B-                                |                                      |
|---------------------------------------|--------------------------------------|
| PI Sta 10+12.805                      | PI Sta 10+43.370                     |
| $\Delta = 15^{\circ} 02' 23.0''$ (RT) | $\Delta = 9^{\circ} 45' 42.7''$ (RT) |
| L = 25.462                            | L = 24.364                           |
| T = 12.805                            | T = 12.211                           |
| R = 97.000                            | R = 143.000                          |
| SE = SEE PLANS                        | SE = SEE PLANS                       |

NOTE: SIGN AND LIGHTS TO BE REMOVED (PARCELS NO. 24 & 27)



MID ATLANTIC TOWNHOMES, LLC  
DB 5911 PG 2846  
1.084 Ha (DEED)

(21)

4.0 x 2.0 x 1  
1.5 weir

+58.000 -L-  
15.000m (49.21')  
23.000m (75.46')

+62.000 -L-  
15.000m (49.21')  
23.000m (75.46')

MID ATLANTIC TOWNHOMES, LLC  
DB 5911 PG 2846  
1.252 Ha (DEED)

(21)

(24)

JAMESFORD MEADOWS HOMEOWNERS ASSOCIATION  
DB 5072 PG 1035  
0.500 Ha (DEED)

BEGIN CONST.  
-Y10B- STA 10+55.000

-Y10B- PTSta.10+55.522

+55.000 -Y10B-  
@ EXIST. RW

+72.000 -Y10B-  
@ EXIST. RW

+72.000 -Y10B-  
11.000m (36.09')

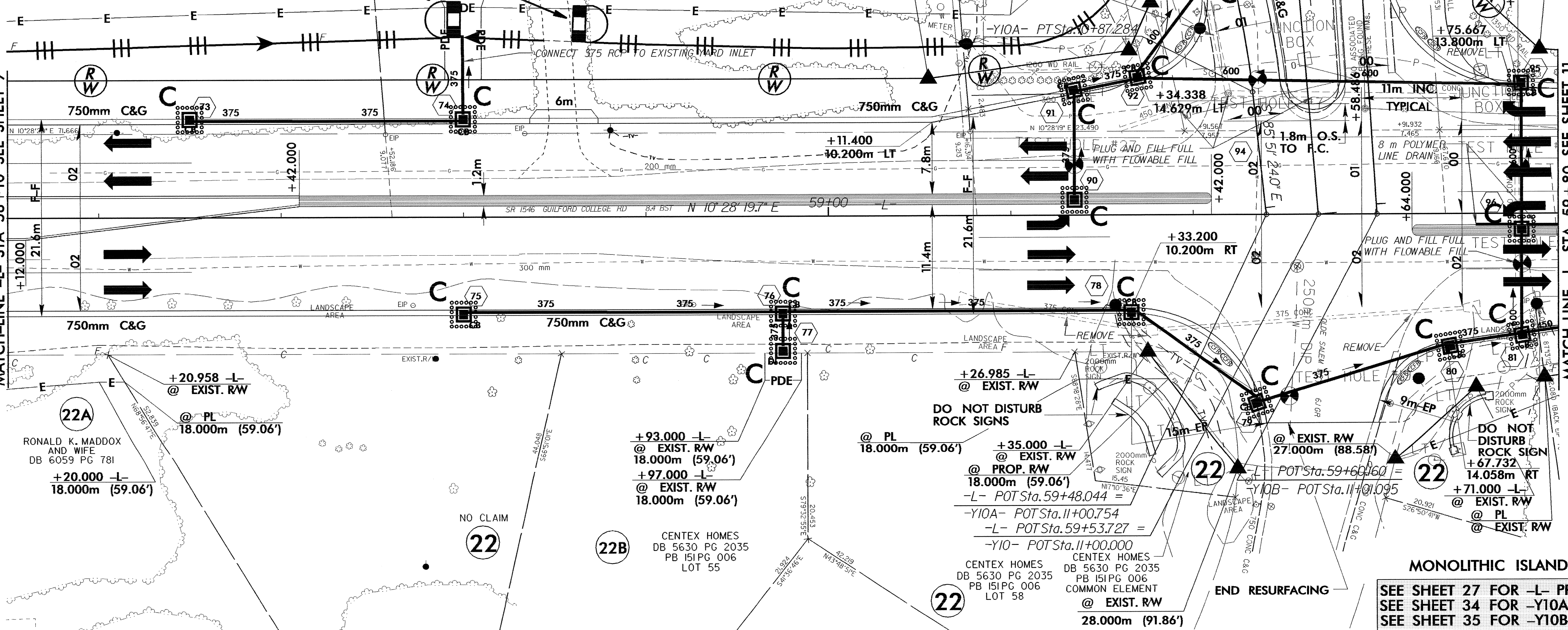
+78.000 -L-  
18.000m (59.06')

+75.667 -L-  
13.800m (45.27')

+75.667 -L-  
13.800m (45.27')

MATCH-LINE -L- STA 58+10 SEE SHEET 9

MATCH-LINE -L- STA 59+80 SEE SHEET 11



+20.958 -L-  
@ EXIST. RW

@ PL  
18.000m (59.06')

RONALD K. MADDOX AND WIFE  
DB 6059 PG 781  
+20.000 -L-  
18.000m (59.06')

(22A)

NO CLAIM

(22)

+93.000 -L-  
@ EXIST. RW  
18.000m (59.06')

+97.000 -L-  
@ EXIST. RW  
18.000m (59.06')

(22B)

CENTEX HOMES  
DB 5630 PG 2035  
PB 151PG 006  
LOT 55

+26.985 -L-  
@ EXIST. RW

DO NOT DISTURB  
ROCK SIGNS

@ PL  
18.000m (59.06')

+35.000 -L-  
@ EXIST. RW  
18.000m (59.06')

@ PROP. RW  
18.000m (59.06')

-L- POT Sta. 59+48.044 =

-Y10A- POT Sta. 11+00.754

-L- POT Sta. 59+53.727 =

-Y10- POT Sta. 11+00.000

(22)

CENTEX HOMES  
DB 5630 PG 2035  
PB 151PG 006  
LOT 58

+27.000m (88.58')

@ EXIST. RW

-Y10B- POT Sta. 11+01.095

-L- POT Sta. 59+60.160 =

-Y10B- POT Sta. 11+01.095

@ EXIST. RW

+71.000 -L-  
@ EXIST. RW

MONOLITHIC ISLAND

SEE SHEET 27 FOR -L- PROFILE  
SEE SHEET 34 FOR -Y10A- PROFILE  
SEE SHEET 35 FOR -Y10B- PROFILE

END RESURFACING