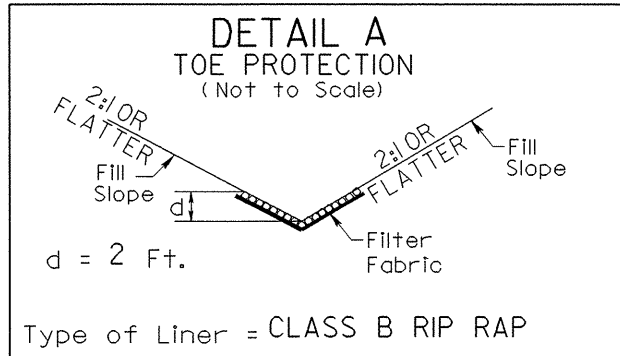
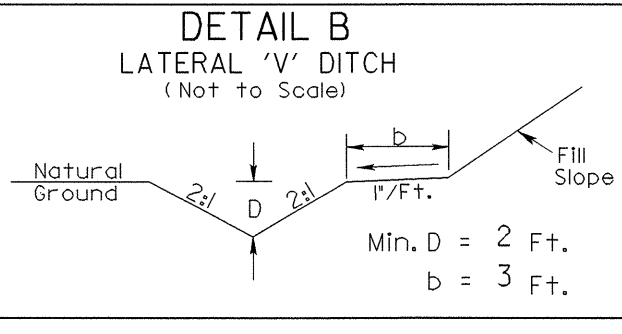


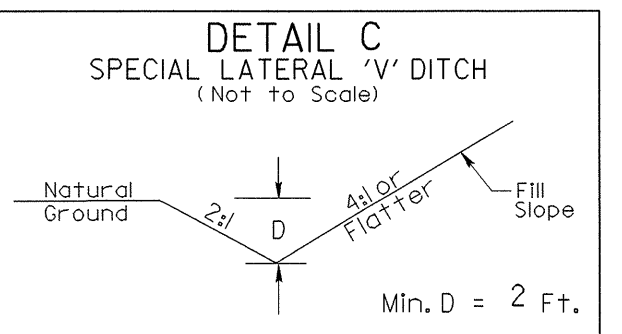
-L-  
 PI Sta 19+46.45  
 $\Delta = 6' 19' 47.1''$  (RT)  
 $D = 0' 49' 06.6''$   
 $L = 773.33'$   
 $T = 387.06'$   
 $R = 7,000.00'$   
 $SE = 02$   
 $RO = 48.0'$



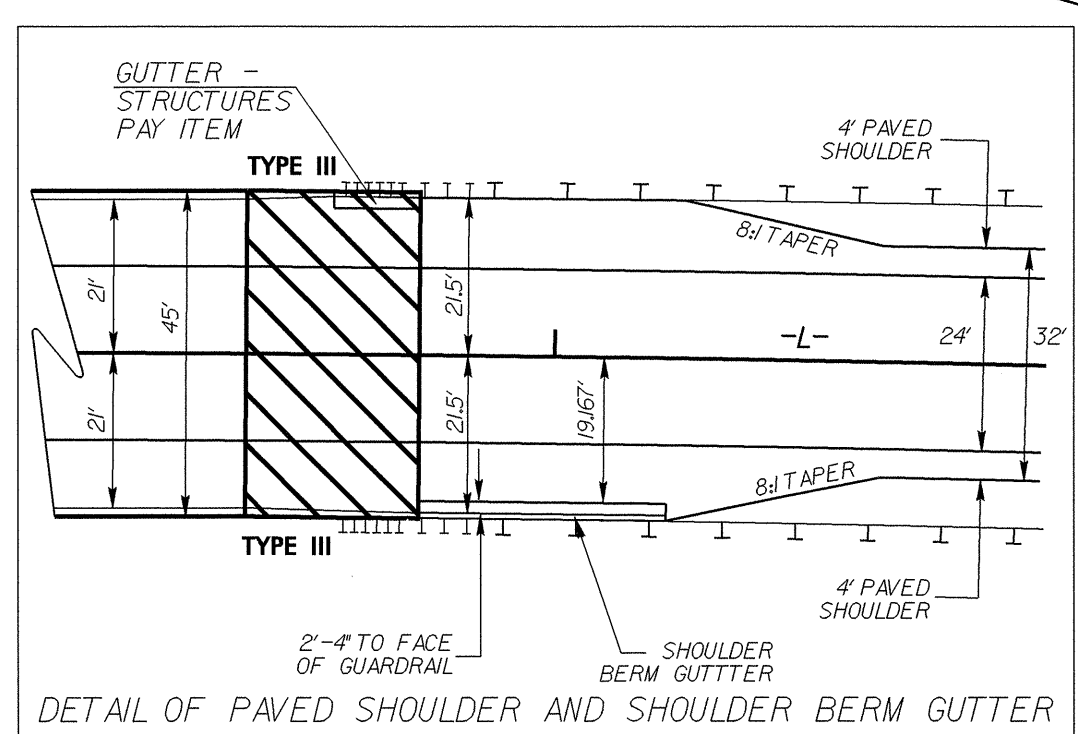
Type of Liner = CLASS B RIP RAP  
 NOTE: STA 15+50 TO STA 18+50 -L- LT PLACE CLASS B RIP RAP AT THE TOE OF SLOPE. EST. 172 TONS, 299 SY F.F.



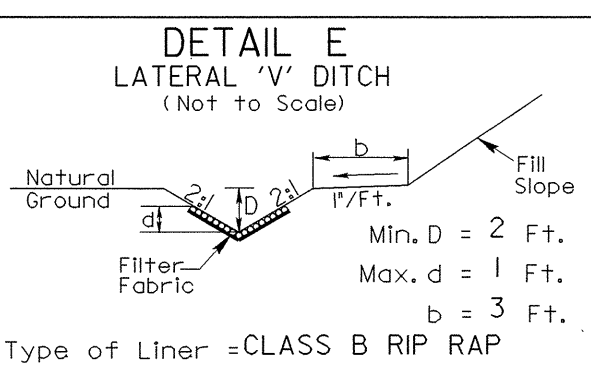
NOTE: STA 18+50 TO STA 20+79 -L- RT



NOTE: STA 15+50 TO STA 18+00 -L- RT

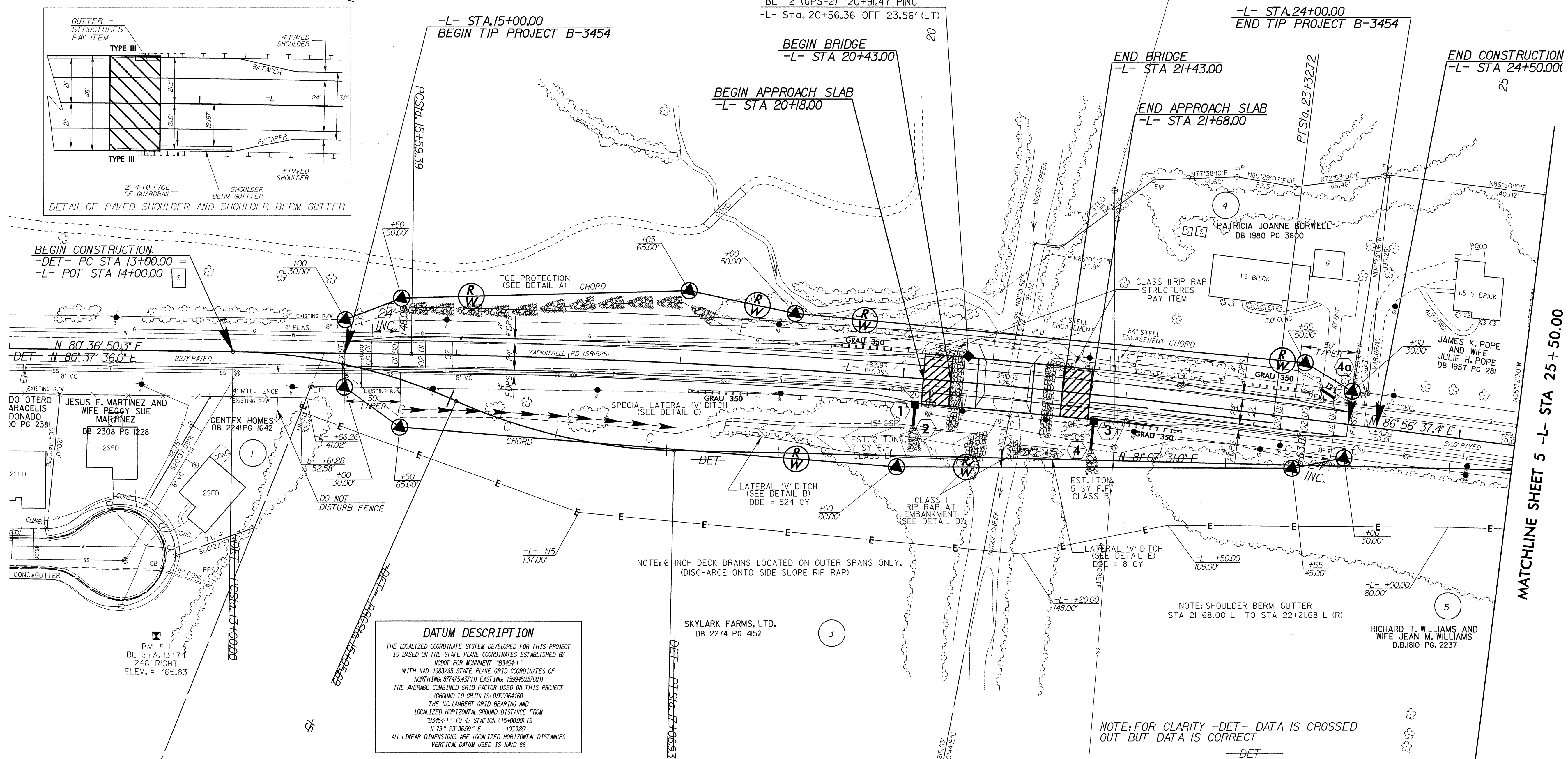


NOTE: LATERAL V DITCH OUTLET, STA 20+79-L- TO CREEK RT, EST. 15 TONS, CLASS I, 30 SY F.F.  
 NOTE: LATERAL V DITCH OUTLET, STA 21+07-L- TO CREEK RT, EST. 6 TONS, CLASS I, 14 SY F.F.



NOTE: STA 21+07 TO STA 21+50 -L- RT EST. 25 TONS, 43 SY F.F.

**DATUM DESCRIPTION**  
 THE LOCALIZED COORDINATE SYSTEM DEVELOPED FOR THIS PROJECT IS BASED ON THE STATE PLANE COORDINATES ESTABLISHED BY NCOT FOR MONUMENT "B3454-1" WITH NAD 1983/95 STATE PLANE GRID COORDINATES OF NORTHING: 87475.437111111 EASTING: 159945.027611111 THE AVERAGE COMBINED GRID FACTOR USED ON THIS PROJECT (GROUND TO GRID) IS: 0.99984160 THE N.C. LAMBERT GRID BEARING AND LOCALIZED HORIZONTAL GROUND DISTANCE FROM "B3454-1" TO ± STATION (15+00.00) IS N 79° 23' 36.29" E 1033.85' ALL LINEAR DIMENSIONS ARE LOCALIZED HORIZONTAL DISTANCES VERTICAL DATUM USED IS MVD 88



PI Sta 14+04.26 $\Delta = 23' 06' 28.0''$ (RT) $D = 1' 14' 04.1''$ $L = 205.69'$ $T = 104.26'$ $R = 510.00'$	PI Sta 16+07.64 $\Delta = 22' 36' 33.0''$ (LT) $D = 1' 14' 04.1''$ $L = 201.25'$ $T = 101.95'$ $R = 510.00'$	PI Sta 26+74.54 $\Delta = 5' 49' 07.0''$ (RT) $D = 2' 51' 53.2''$ $L = 203.11'$ $T = 101.64'$ $R = 2,000.00'$
---	---	--

SEE SHEET 6 FOR -L- PROFILE  
 SEE SHEET 2A FOR -DET- PLANS  
 SEE SHEETS S-1 THRU S-26 FOR STRUCTURE PLANS