

-DET-

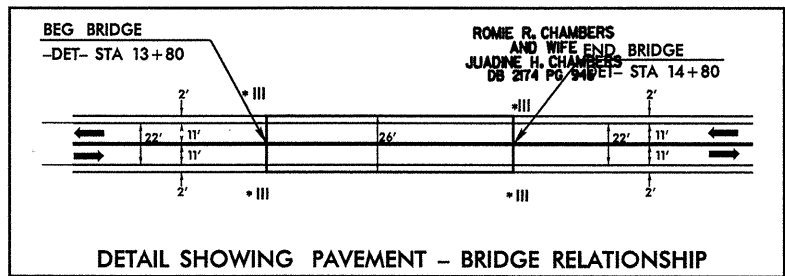
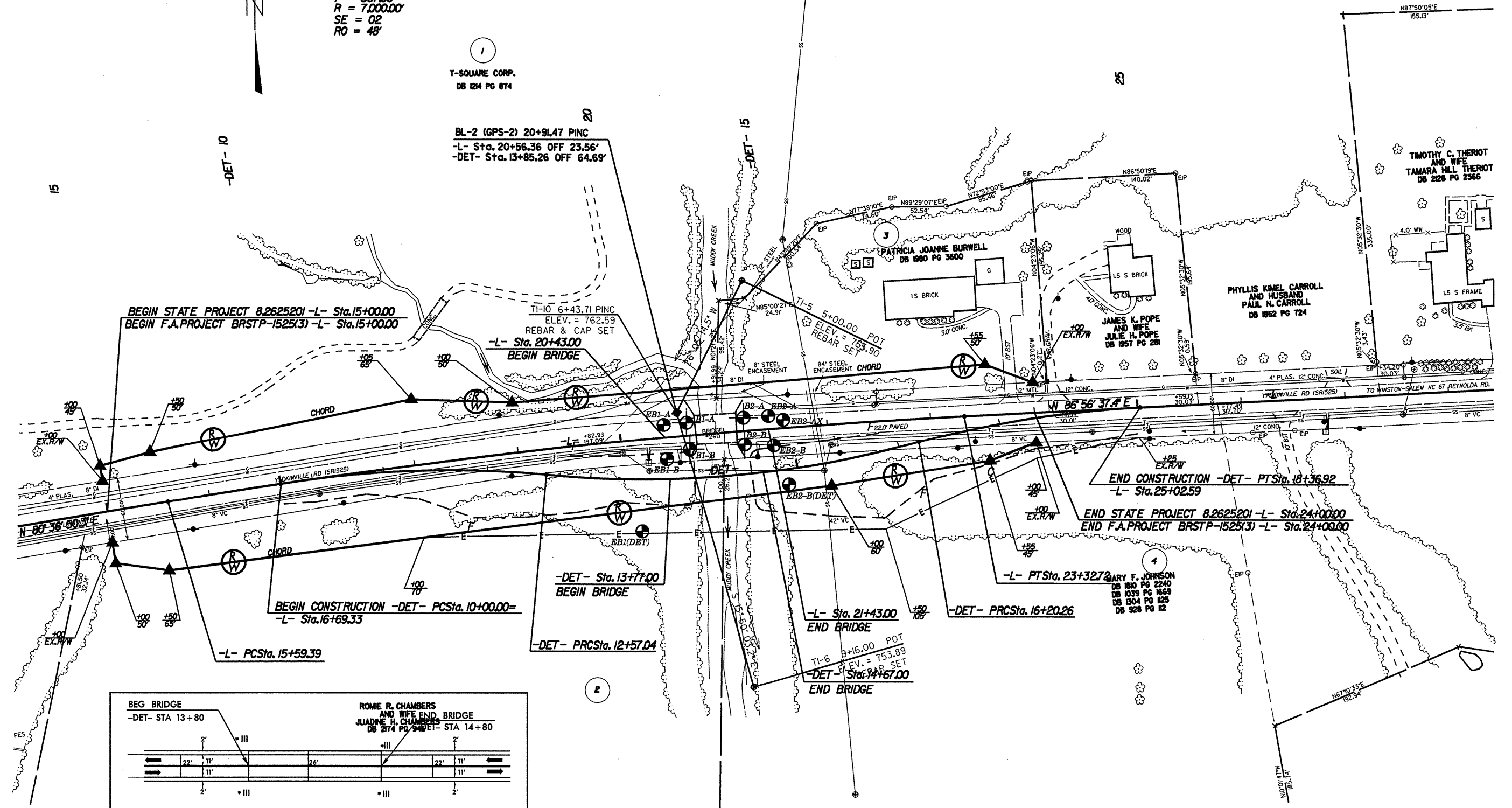
PI Sta 11+29.23 $\Delta = 14' 43" 38.0"$ (RT) $D = 5' 43" 46.5"$ $L = 257.04'$ $T = 129.23'$ $R = 1,000.00'$ $SE = 02$ $RO = 42$	PI Sta 14+40.67 $\Delta = 20' 48" 39.6"$ (LT) $D = 5' 43" 46.5"$ $L = 363.22'$ $T = 183.63'$ $R = 1,000.00'$ $SE = 05$ $RO = 105$	PI Sta 17+29.01 $\Delta = 12' 24" 48.7"$ (RT) $D = 5' 43" 46.5"$ $L = 216.66'$ $T = 108.75'$ $R = 1,000.00'$ $SE = 01$ $RO = 21$
--	---	--

-L-

PI Sta 19+46.45
 $\Delta = 6' 19" 47.1"$ (RT)
 $D = 0' 49" 06.8"$
 $L = 773.33'$
 $T = 387.06'$
 $R = 7,000.00'$
 $SE = 02$
 $RO = 48$

1
T-SQUARE CORP.
 DB 124 PG 874

BL-2 (GPS-2) 20+91.47 PINC
-L- Sta. 20+56.36 OFF 23.56'
-DET- Sta. 13+85.26 OFF 64.69'



SEE SHEET 5 FOR PROFILE

REVISIONS

8/17/99