

NORTH CAROLINA DEPARTMENT OF TRANSPORTATION  
 GEOTECHNICAL UNIT BORING LOG

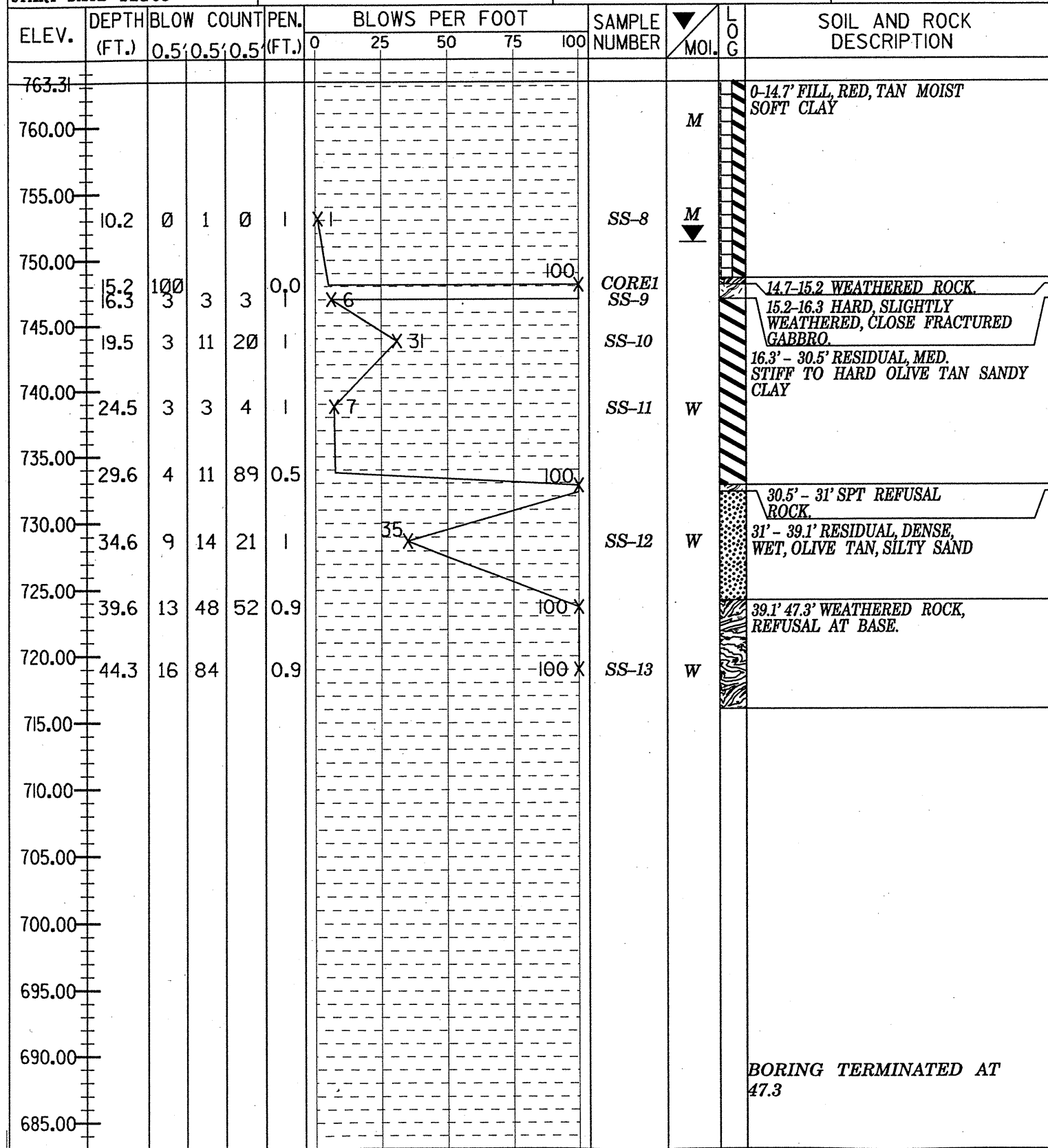
SHEET 1 OF 1

13/21

PROJECT NO. 8.2625201		ID. B-3454		COUNTY FORSYTH		GEOLOGIST MURRAY	
SITE DESCRIPTION BRIDGE 260 OVER MUDDY CREEK ON SR-1136							GROUND WATER
BORING NO. B2-B		BORING LOCATION 21+19.00		OFFSET 14.00		ALIGNMENT	
COLLAR ELEVATION 763.31		NORTHING 877730.5743		EASTING 1601082.0034		24 HR. 12.0	
TOTAL DEPTH 47.3		DRILL MACHINE CME-550		DRILL METHOD NW CASNXWL		HAMMER TYPE AUTOMATIC	
START DATE 1/28/03		COMPLETION DATE 1/28/03		SURFACE WATER DEPTH		DEPTH TO ROCK 47.3	

NORTH CAROLINA DEPARTMENT OF TRANSPORTATION  
 DIVISION OF HIGHWAYS  
 GEOTECHNICAL UNIT CORE BORING REPORT

PROJECT NO: 8.2625201      PROJECT ID: B-3454      COUNTY: Forsyth      GEOLOGIST: C.C. MURRAY  
 SITE DESCRIPTION: Bridge 60 over Muddy Creek on SR 1525      DRILLER: J.E. ESTEP  
 BORING NO: B2-B      BORING LOCATION (STA): 21+19      OFFSET: 14.00  
 COLLAR ELEV: 763.31      PERSONNEL: DKB, JEE, CCM      CORE SIZE: NXWL  
 TOTAL DEPTH: 47.30      DRILL MACHINE: CME-550      DATE STARTED: 1/28/03  
 TOTAL RUN: 1.1'      DRILL EQUIP:      DATE COMPLETED: 1/28/03



ELEV. (FT)	DEPTH (FT)	DRILL RATE (MIN/1.0 FT)	RUN NO.	REC % (FT)	RQD % (FT)	SAMPLE NO.	FIELD CLASSIFICATION AND REMARKS
748.11	15.2		1	100%	100%		15.2-16.3' Hard, fresh to slightly weathered, dark greenish gray, medium grained gabbro. One piece, may be boulder. Sharp contact to residual clay, above and below.
747.01	16.3						

NOTES

BORING TERMINATED AT  
47.3