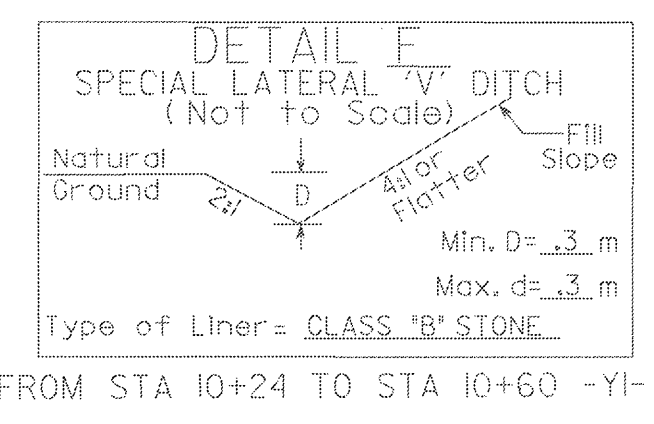


REVISIONS

R/W REV- REVISED R/W LEFT SIDE -L-, CHANGED PARCEL NAMES FOR PARCELS 4, 5, 6, AND 12, ADDED PDE ON PARCEL 5, REMOVED EXISTING R/W LINES ON PARCELS 6 AND 8, REVISED STATION AND OFFSETS FOR TEMPORARY CONSTRUCTION EASEMENT



FOR PROFILE OF -L- SEE SHEETS NO. 15 & 16
 FOR PROFILE OF -Y1- SEE SHEET NO. 23
 FOR INTERSECTION DETAIL OF -Y1- SEE SHEET NO. 2-E

PROJECT REFERENCE NO. R-2813C	SHEET NO. UC-6
R/W SHEET NO.	

METRIC

5 0 10

CONST. REV.

R/W REV.

Kimley-Horn and Associates, Inc.
©, 2003

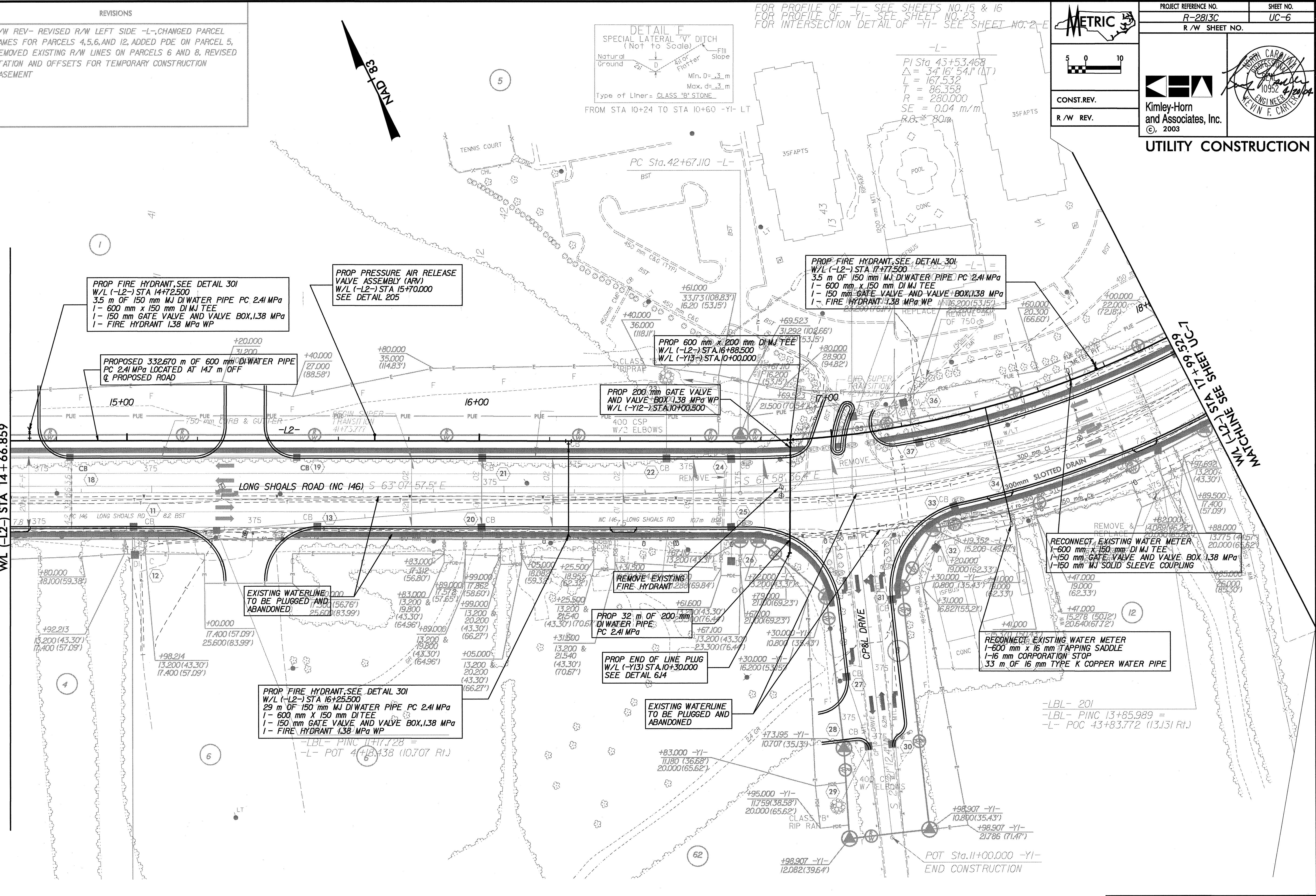
UTILITY CONSTRUCTION

Professional Engineer Seal: KEVIN F. CARTER, No. 10952, State of North Carolina.

MATCHLINE SEE SHEET UC-6
 W/L (-L2-) STA 14+66.859

MATCHLINE SEE SHEET UC-7
 W/L (-L2-) STA 17+99.329

04/20/2004 08:18:53 AM R:\012236004\Plan\N2813C\UC6.FSU



PROP FIRE HYDRANT, SEE DETAIL 30I
 W/L (-L2-) STA 14+72.500
 3.5 m OF 150 mm MJ DI WATER PIPE PC 2.4I MPa
 1- 600 mm x 150 mm DI MJ TEE
 1- 150 mm GATE VALVE AND VALVE BOX, 1.38 MPa
 1- FIRE HYDRANT 1.38 MPa WP

PROP PRESSURE AIR RELEASE VALVE ASSEMBLY (ARV)
 W/L (-L2-) STA 15+70.000
 SEE DETAIL 205

PROP FIRE HYDRANT, SEE DETAIL 30I
 W/L (-L2-) STA 17+77.500
 3.5 m OF 150 mm MJ DI WATER PIPE PC 2.4I MPa
 1- 600 mm x 150 mm DI MJ TEE
 1- 150 mm GATE VALVE AND VALVE BOX, 1.38 MPa
 1- FIRE HYDRANT 1.38 MPa WP

PROPOSED 332.670 m OF 600 mm DI WATER PIPE
 PC 2.4I MPa LOCATED AT 14.7 m OFF
 Q PROPOSED ROAD

PROP 600 mm x 200 mm DI MJ TEE
 W/L (-L2-) STA 16+88.500
 W/L (-Y13-) STA 10+00.000

PROP 200 mm GATE VALVE AND VALVE BOX, 1.38 MPa WP
 W/L (-Y12-) STA 10+00.500

EXISTING WATERLINE TO BE PLUGGED AND ABANDONED

REMOVE EXISTING FIRE HYDRANT

PROP 32 m OF 200 mm DI WATER PIPE
 PC 2.4I MPa

PROP END OF LINE PLUG W/L (-Y13) STA 10+30.000
 SEE DETAIL 6J4

EXISTING WATERLINE TO BE PLUGGED AND ABANDONED

RECONNECT EXISTING WATER METER
 1- 600 mm x 150 mm DI MJ TEE
 1- 150 mm GATE VALVE AND VALVE BOX, 1.38 MPa
 1- 150 mm MJ SOLID SLEEVE COUPLING

RECONNECT EXISTING WATER METER
 1- 600 mm x 16 mm TAPPING SADDLE
 1- 16 mm CORPORATION STOP
 33 m OF 16 mm TYPE K COPPER WATER PIPE

PROP FIRE HYDRANT, SEE DETAIL 30I
 W/L (-L2-) STA 16+25.500
 2.9 m OF 150 mm MJ DI WATER PIPE PC 2.4I MPa
 1- 600 mm x 150 mm DI TEE
 1- 150 mm GATE VALVE AND VALVE BOX, 1.38 MPa
 1- FIRE HYDRANT 1.38 MPa WP

-LBL- PINC 11+17.28 =
 -L- POT 4+18.438 (10.707 Rt.)

-LBL- 20I
 -LBL- PINC 13+85.989 =
 -L- POC 43+83.772 (13.131 Rt.)

SEE SHEET UC-14 & 15 FOR (-L2-) PROFILE