

REVISIONS
R/W REV - REVISED R/W RIGHT SIDE -L- TO INCLUDE PARCEL 22, CHANGED PARCEL NAMES FOR 19, 20, 23, AND 24

DATE: 4/1/02

- L -
 PI Sta 46+75.753
 $\Delta = 30^\circ 47' 41.0''$ (LT)
 L = 150.491
 T = 77.111
 R = 280.000
 SE = 0.04 m/m

- Y3 -
 PI Sta 10+61.938
 $\Delta = 31^\circ 47' 41.2''$ (LT)
 L = 38.845
 T = 19.937
 R = 70.000
 SE = 0.04 m/m

FOR PROFILE OF -L- SEE SHEETS NO. 17 & 18
 FOR PROFILES OF -Y2- & -Y3- SEE SHEET NO. 23
 FOR PROFILE OF -Y4- SEE SHEET NO. 24
 FOR INTERSECTION DETAILS OF -Y2- & -Y3- SEE SHEET NO. 2-F
 FOR INTERSECTION DETAIL OF -Y4- SEE SHEET NO. 2-G

METRIC

5 0 10

CONST. REV.
 R/W REV.

PROJECT REFERENCE NO.
 R-2813C

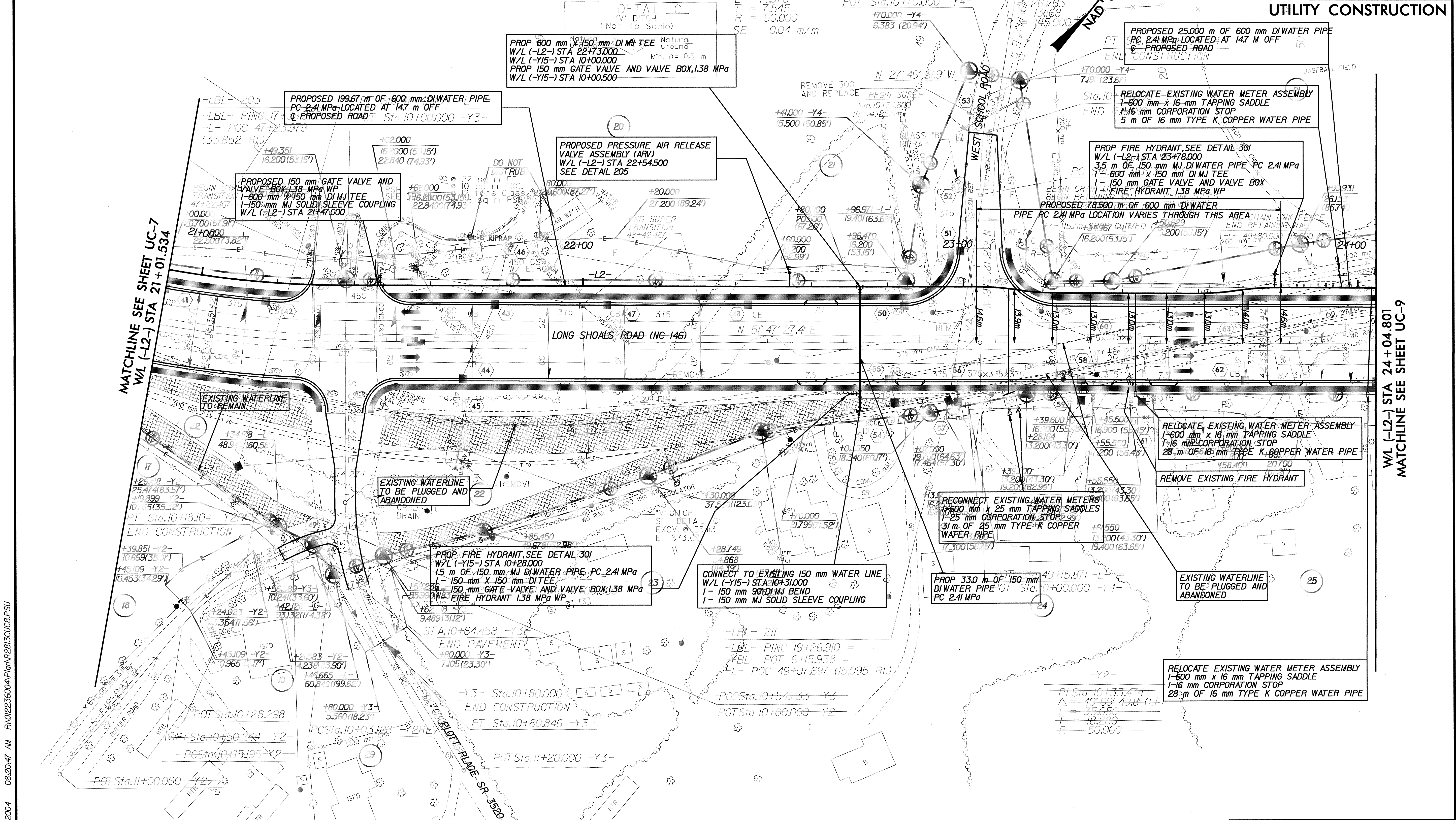
SHEET NO.
 UC-8

R/W SHEET NO.

Kimley-Horn and Associates, Inc.
 ©, 2003

UTILITY CONSTRUCTION

10952 4/1/02
 KEVIN F. CARTER



SEE SHEET UC-15 & 16 FOR (-L-) PROFILE

04/20/2004 08:20:47 AM R:\02236004\Plan\R2813CUC8.PSU