

REVISIONS

R/W REV - REVISED R/W LEFT SIDE -L-, CHANGED PARCEL NAMES FOR PARCELS 45, AND 58, ADVANCED ACQUISITION OF PARCEL 45

FOR PROFILE OF -L- SEE SHEETS NO. 21 & 22

-L-

PI Sta 64+04.012
Δ = 6' 42" 19.7" (LT)
L = 81.923
T = 41.008
R = 700.000
SE = 0.03 m/m

METRIC

CONST. REV.
R/W REV.

PROJECT REFERENCE NO. R-2813C	SHEET NO. UC-12
R/W SHEET NO.	

Kimley-Horn and Associates, Inc.
©, 2003

UTILITY CONSTRUCTION

FOR 200mmX450mm CONCRETE CURB USE 3m MIN. RADIUS

-L-
PI Sta 61+94.238
Δ = 2' 25" 52.9" (RT)
L = 38.192
T = 19.099
R = 900.000
SE = 0.03 m/m

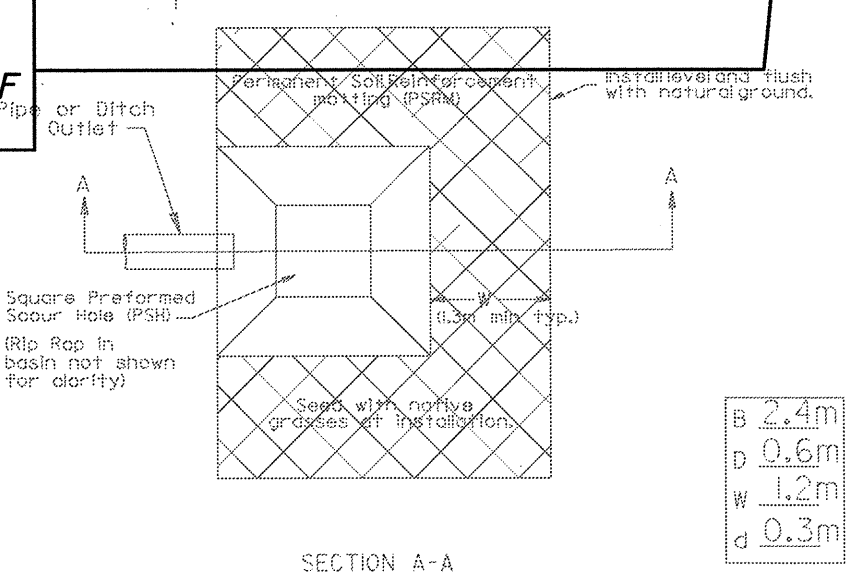
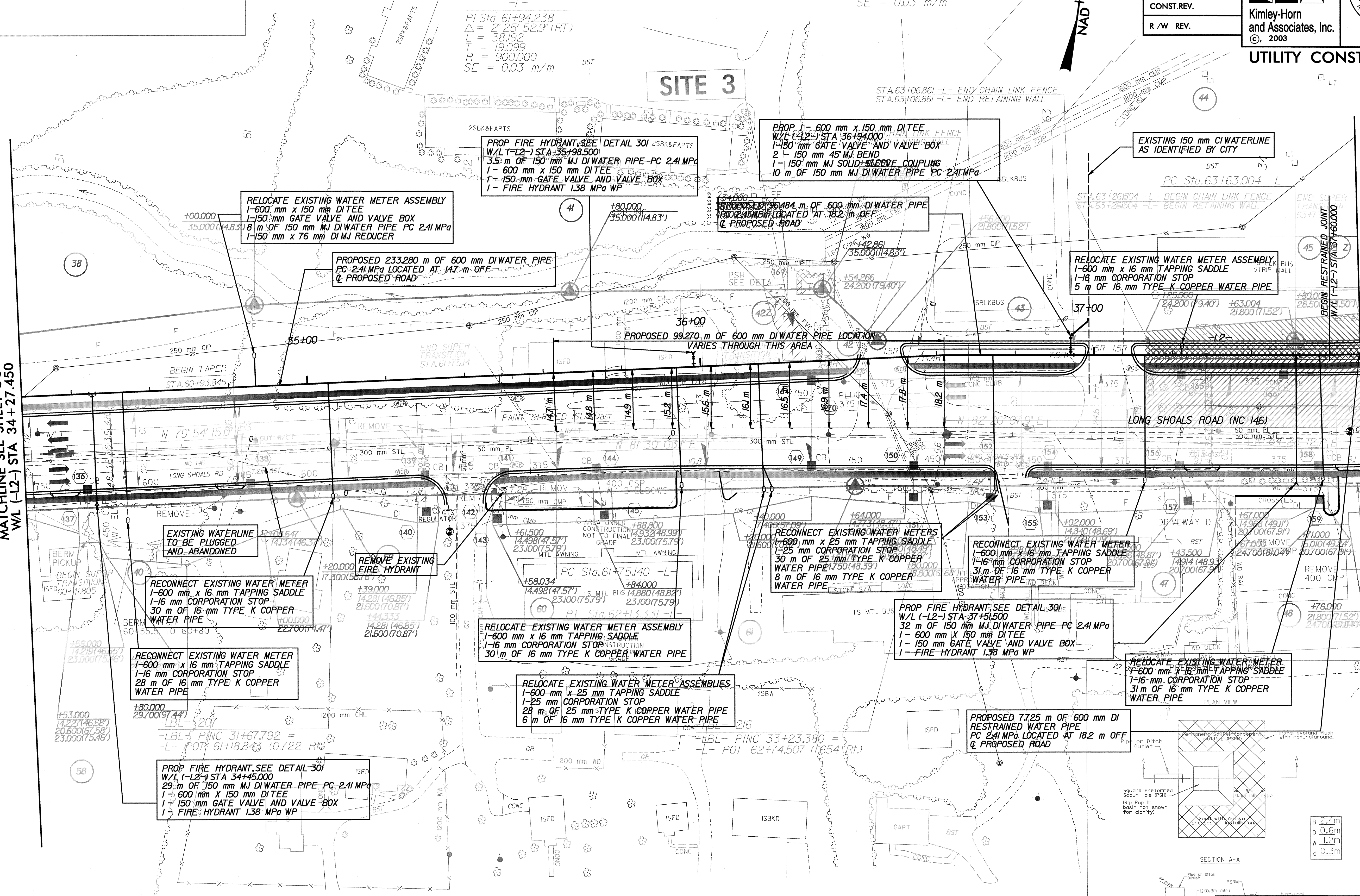
SITE 3

NAD 83

MATCHLINE SEE SHEET UC-11
WL (-L2-) STA 34+27.450

WL (-L2-) STA. 37+67.725
MATCHLINE SEE SHEET UC-13

04/20/2004 09:37:47 AM R:\01223600A\Plan\2813C\UC12.dwg



SEE SHEET UC-17 & 18 FOR (-L2-) PROFILE