

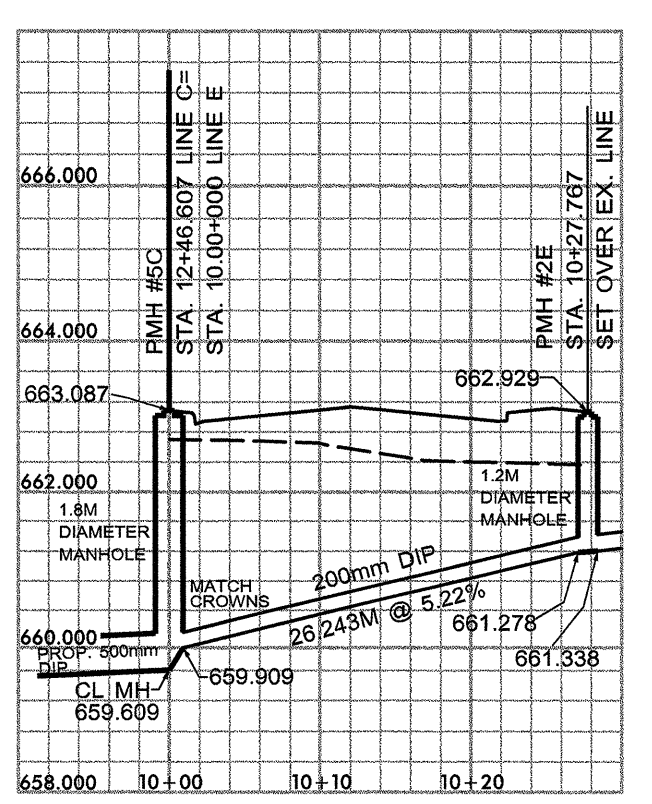
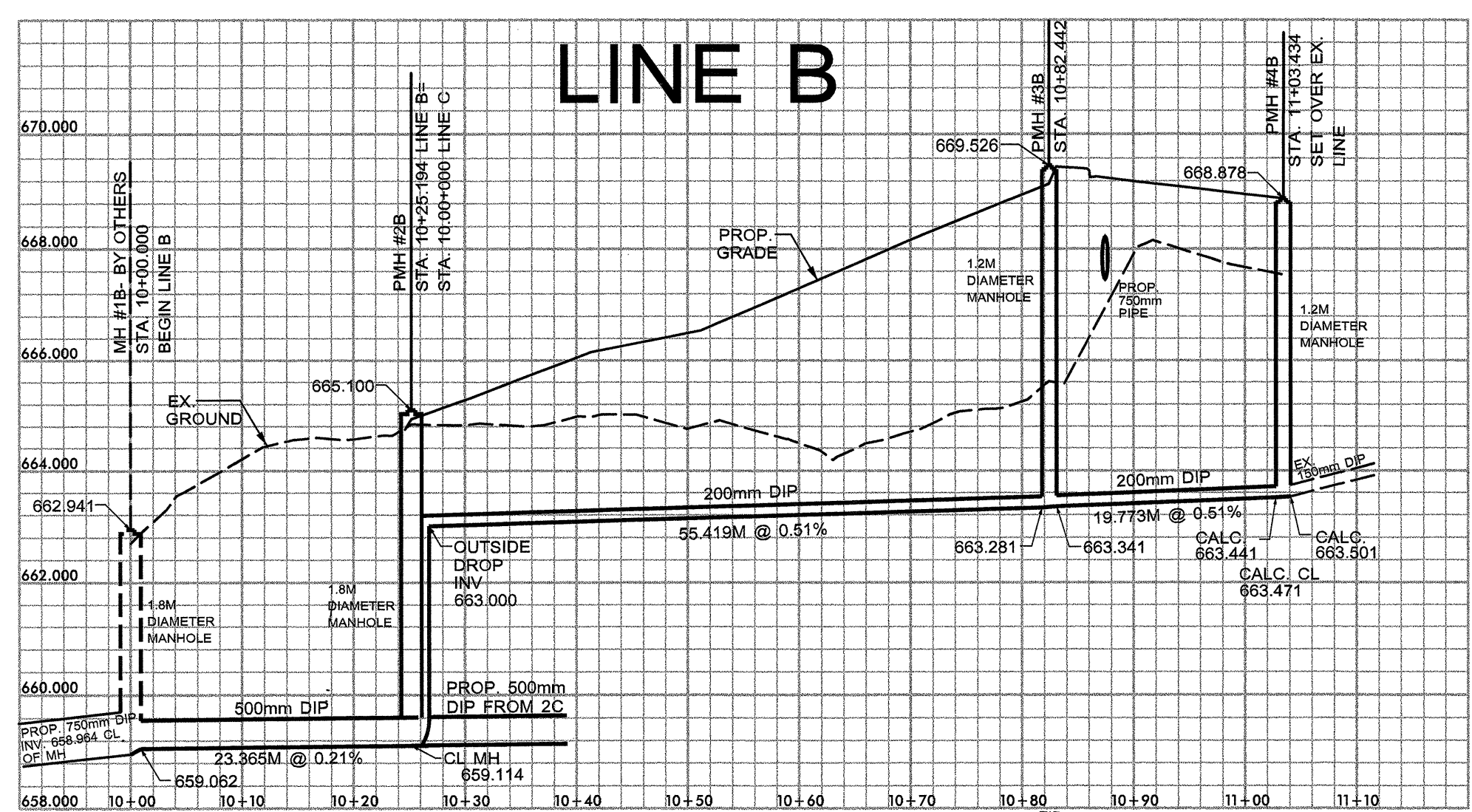
CONTRACT #C200822

CONST. REV. \_\_\_\_\_  
R/W REV. \_\_\_\_\_

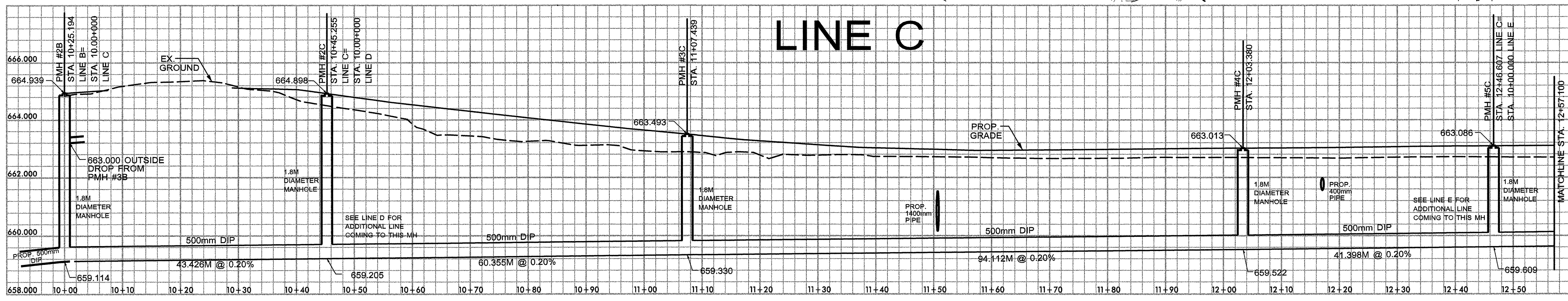
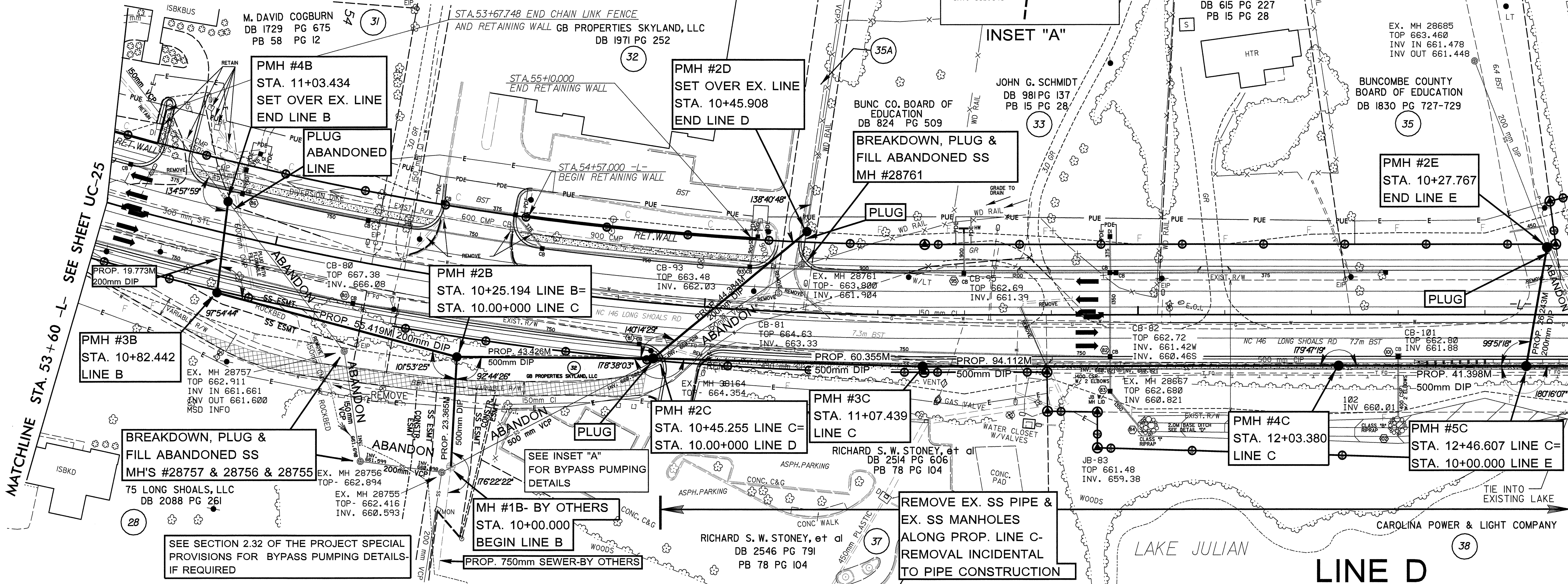
PROJECT REFERENCE NO.	SHEET NO.
R-2813C	UC-26
R/W SHEET NO.	10
ROADWAY DESIGN ENGINEER	HYDRAULICS ENGINEER

- NOTES:
- CONTRACTOR SHALL COMPLY WITH ALL APPLICABLE NCDOT STANDARDS & PROJECT SPECIAL PROVISIONS FOR NEW SEWER LINE CONSTRUCTION.
  - THE LOCATION AND DEPTH OF ALL UNDERGROUND UTILITIES ARE APPROXIMATE, CONTRACTOR SHALL VERIFY ALL UNDERGROUND UTILITIES WITH NC ONE CALL PRIOR TO CONSTRUCTION.
  - PROPOSED WATER, TELEPHONE, GAS AND ELECTRIC LINES SHALL BE INSTALLED ON THE NORTH SIDE OF THE PROPOSED HIGHWAY. CONTRACTOR SHALL COORDINATE SEWER CONSTRUCTION WITH THESE UTILITIES.
  - CONTRACTOR SHALL LOCATE AND RECONNECT ALL SERVICE LINES TO THE NEW LINE.
  - CONTRACTOR SHALL COMPLY WITH NCDENR EROSION & SEDIMENTATION CONTROL MEASURES.
  - ALL MANHOLES REMOVED, ALL PIPE REMOVED, ANY TEMPORARY CONNECTIONS AND ANY REQUIRED BYPASS PUMPING SHALL BE CONSIDERED INCIDENTAL TO THE NEW SEWER LINE CONSTRUCTION.

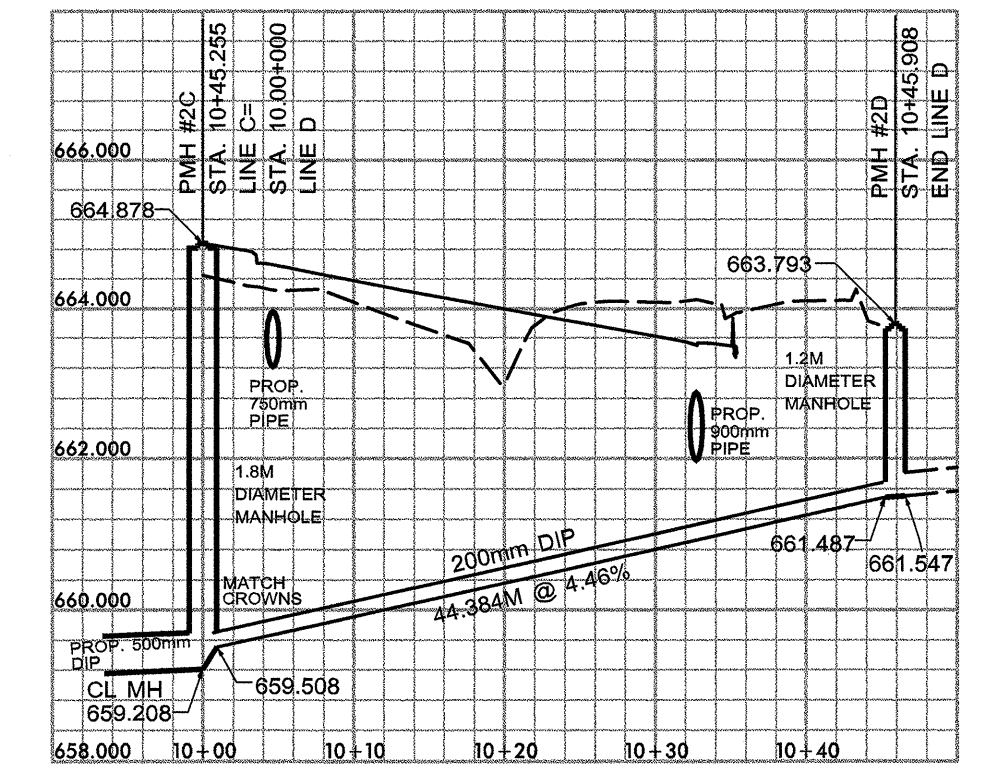
UTILITY CONSTRUCTION SEWER



LINE E



LINE C



LINE D

NORTH CAROLINA PROFESSIONAL ENGINEER  
SEAL 16267  
MICHAEL A. CALLOWAY  
Michael A. Calloway  
4-26-04

MATCHLINE STA. 57+00 -L- SEE SHEET UC-27