

NOTE:  
ALL PROPOSED UTILITY WORK  
SHOWN ON THIS SHEET WILL  
BE DONE BY OTHERS

**DATUM DESCRIPTION**

THE LOCALIZED COORDINATE SYSTEM DEVELOPED FOR THIS PROJECT IS BASED ON THE STATE PLANE COORDINATES ESTABLISHED BY NCDOT FOR MONUMENT "R2813C-10" WITH NAD 83 STATE PLANE GRID COORDINATES OF NORTHING: 197,916,503 (m) EASTING: 286,973,960 (m)

THE AVERAGE COMBINED GRID FACTOR USED ON THIS PROJECT (GROUND TO GRID) IS 0.999784950

THE N.C. LAMBERT GRID BEARING LOCALIZED HORIZONTAL GROUND DISTANCE FROM "R2813C-10" TO -L- STATION 35+00.000 IS : S 20°03'58.73"E AND 13,634 m

ALL LINEAR DIMENSIONS ARE LOCALIZED HORIZONTAL DISTANCES VERTICAL DATUM USED IS NGVD 29

**DETAIL E**  
SPECIAL CUT BASE DITCH (Not to Scale)

Ground  
4:1 or Flatter  
Front Ditch Slope  
Min. D = 0.5 m  
B = 0.6 m

-L- STA. 36+03 TO 36+60 LT

-L-  
PI Sta 36+92.290  
 $\Delta = 39^{\circ}00'00.9" (RT)$   
L = 313.114  
T = 162.896  
R = 460.000

-RP A-  
PIs Sta 10+51.544  
 $\Theta_s = 5^{\circ}32'55.9"$   
Ls = 45.720  
LT = 30.495  
ST = 15.254

-LA-  
PI Sta 36+96.294  
 $\Delta = 39^{\circ}00'00.8" (RT)$   
L = 308.175  
T = 160.326  
R = 452.743  
e = 0.06 m/m  
RO =

35  
NAD 83

BEGIN PAVING  
-RP A- STA.10+39.515

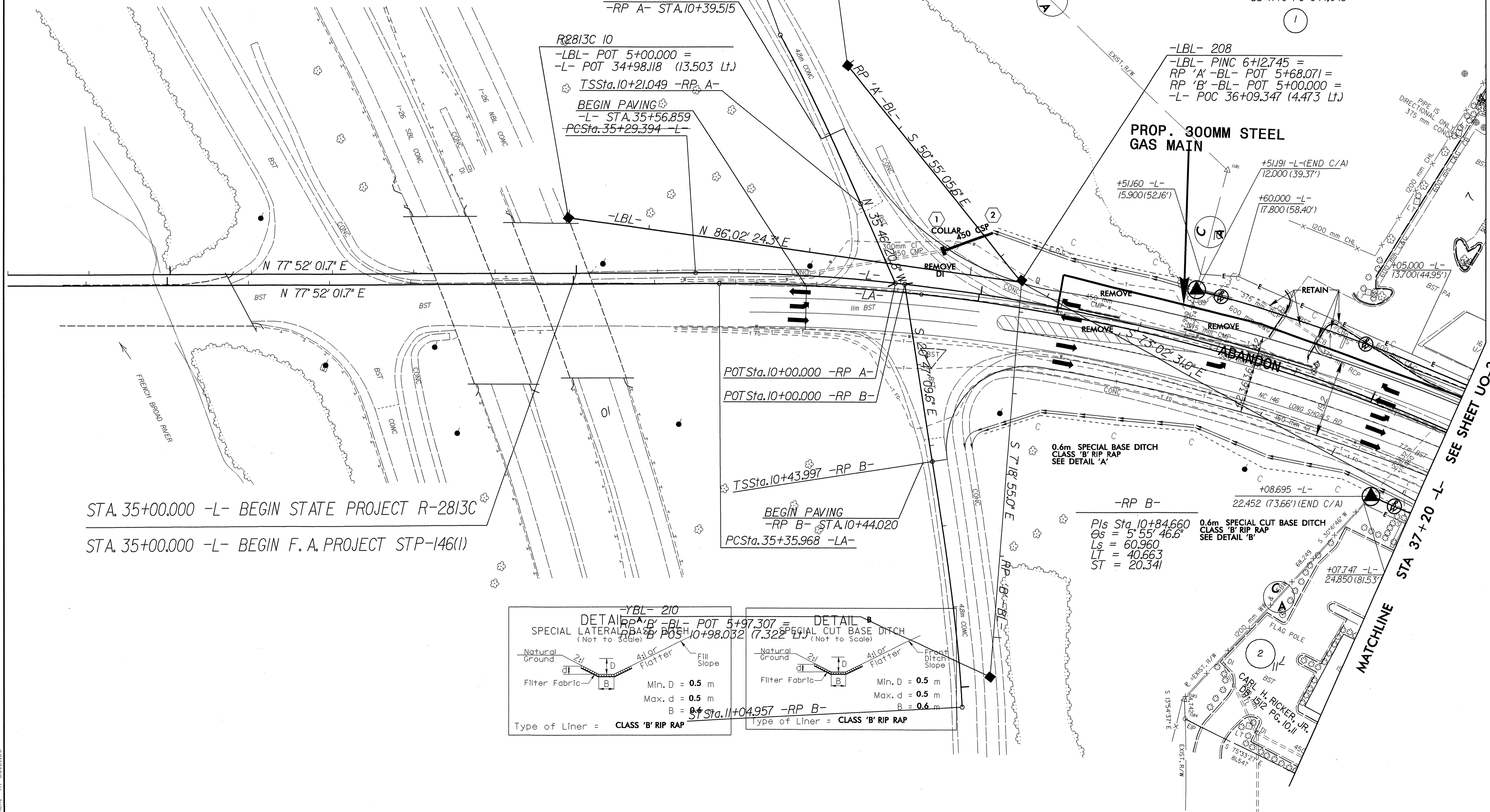
R2813C 10  
-LBL- POT 5+00.000 =  
-L- POT 34+98.118 (13.503 Lt.)  
TSSSta.10+21.049 -RP A-  
BEGIN PAVING  
-L- STA.35+56.859  
PCSta.35+29.394 -L-

-YBL- 209  
RP 'A' -BL- POT 5+00.000 =  
RP 'A' POS 10+52.825 (11.257 RP)

BILTMORE COMMERCIAL PROPERTIES, LLC  
DB 1222 PGS. 645-669  
DB 1776 PG 644,645

-LBL- 208  
-LBL- PINC 6+12.745 =  
RP 'A' -BL- POT 5+68.071 =  
RP 'B' -BL- POT 5+00.000 =  
-L- POC 36+09.347 (4.473 Lt.)

PROP. 300MM STEEL GAS MAIN



STA. 35+00.000 -L- BEGIN STATE PROJECT R-2813C  
STA. 35+00.000 -L- BEGIN F.A. PROJECT STP-146(I)

POTSta.10+00.000 -RP A-  
POTSta.10+00.000 -RP B-  
TSSSta.10+43.997 -RP B-  
BEGIN PAVING  
-RP B- STA.10+44.020  
PCSta.35+35.968 -LA-

-RP B-  
PIs Sta 10+84.660  
 $\Theta_s = 5^{\circ}55'46.6"$   
Ls = 60.960  
LT = 40.663  
ST = 20.341

**DETAIL A**  
SPECIAL LATERAL BASE DITCH (Not to Scale)

Natural Ground  
2:1  
4:1 or Flatter  
Filter Fabric  
Fill Slope  
Min. D = 0.5 m  
Max. d = 0.5 m  
B = 0.6 m  
Type of Liner = CLASS 'B' RIP RAP

-YBL- 210  
RP 'B' -BL- POT 5+97.307 =  
RP 'B' POS 10+98.052 (7.322 Lt.)

**DETAIL B**  
SPECIAL CUT BASE DITCH (Not to Scale)

Natural Ground  
2:1  
4:1 or Flatter  
Filter Fabric  
Front Ditch Slope  
Min. D = 0.5 m  
Max. d = 0.5 m  
B = 0.6 m  
Type of Liner = CLASS 'B' RIP RAP

ST Sta. 11+04.957 -RP B-