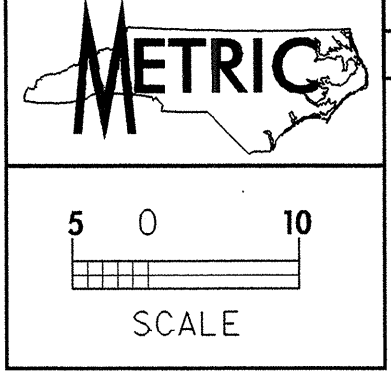
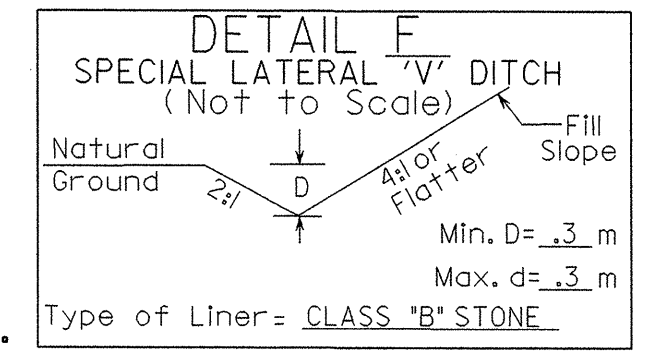


042592



NOTE: ALL PROPOSED UTILITY WORK SHOWN ON THIS SHEET WILL BE DONE BY OTHERS

FOR PROFILE OF -YI- SEE SHEET NO. 23  
FOR INTERSECTION DETAIL OF -YI- SEE SHEET NO. 2-E



5 THE FOREST AT ASHEVILLE PROPERTIES, LLC DB 2077 PG 484 FROM STA 10+24 TO STA 10+60 -YI- LT

-L-  
PI Sta 43+53.468  
 $\Delta = 34' 16" 54.1" (LT)$   
 $L = 167.532$   
 $T = 86.358$   
 $R = 280.000$   
 $SE = 0.04 \text{ m/m}$   
 $R.G. = 80\text{m}$

1 BILTMORE COMMERCIAL PROPERTIES, LLC DB 1222 PGS. 645-669 DB 1776 PG 644,645

PROP. O/H POWER AND TELEPHONE LINES

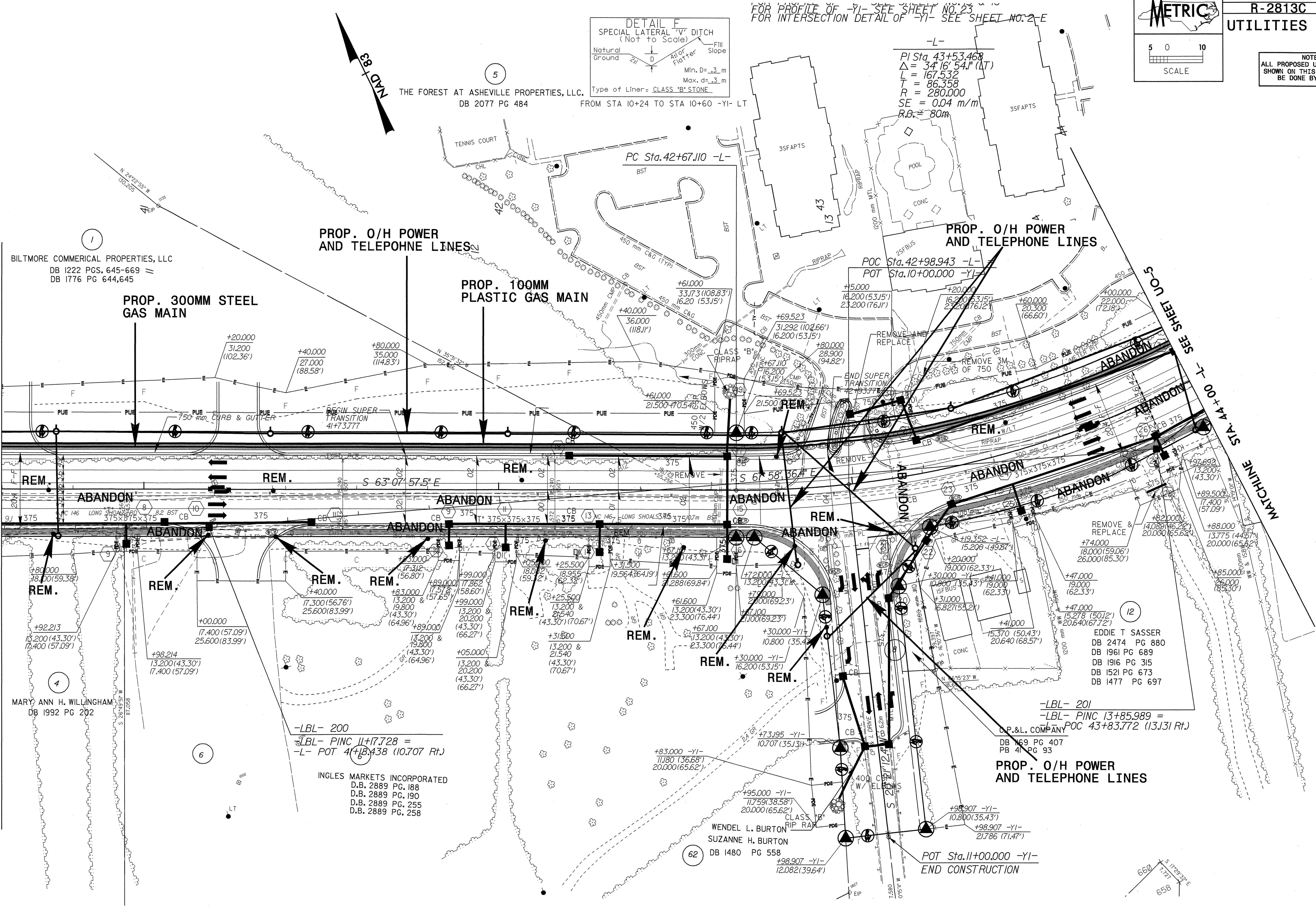
PROP. 100MM PLASTIC GAS MAIN

PROP. 300MM STEEL GAS MAIN

PROP. O/H POWER AND TELEPHONE LINES

MATCHLINE STA. 40+60 -L- SEE SHEET UO-3

SEE SHEET UO-3  
MATCHLINE STA. 4+00 -L-



4 MARY ANN H. WILLINGHAM DB 1992 PG 202

-LBL- 200  
-LBL- PINC 11+17.728 =  
-L- POT 41+18.438 (10.707 Rt.)

INGLES MARKETS INCORPORATED  
D.B. 2889 PG. 188  
D.B. 2889 PG. 190  
D.B. 2889 PG. 255  
D.B. 2889 PG. 258

12 EDDIE T SASSER  
DB 2474 PG 880  
DB 1961 PG 689  
DB 1916 PG 315  
DB 1521 PG 673  
DB 1477 PG 697

-LBL- 201  
-LBL- PINC 13+85.989 =  
D.P.&L. COMPANY POC 43+83.772 (13.131 Rt.)  
DB 169 PG 407  
PB 41 PG 93

PROP. O/H POWER AND TELEPHONE LINES

62 WENDEL L. BURTON SUZANNE H. BURTON DB 1480 PG 558

POT Sta. 11+00.000 -YI- END CONSTRUCTION

PL 11/13/27-APP-2004\_08553  
C:\WORK\2813C\RDY\_PSH6\_UO4.dgn  
04/25/04 10:51:28