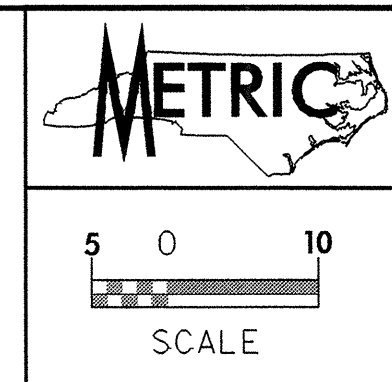


04253

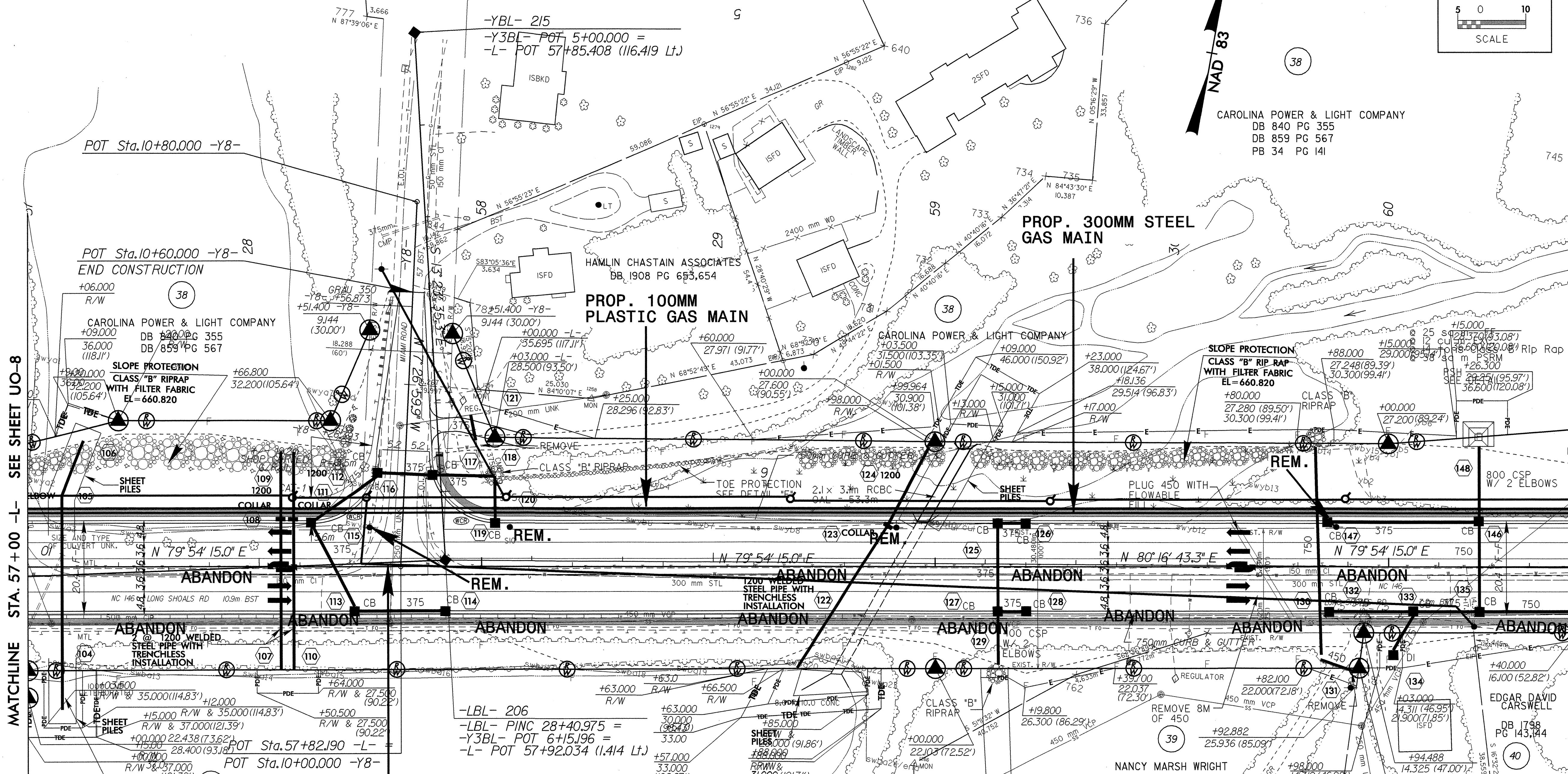
FOR PROFILE OF -L- SEE SHEETS NO. 20 & 21
FOR PROFILE OF -Y8- SEE SHEET NO. 24
FOR INTERSECTION DETAIL OF -Y8- SEE SHEET NO. 2-1



PROJECT REFERENCE NO. **R-2813C**
SHEET NO. **U0-9**
UTILITIES BY OTHERS

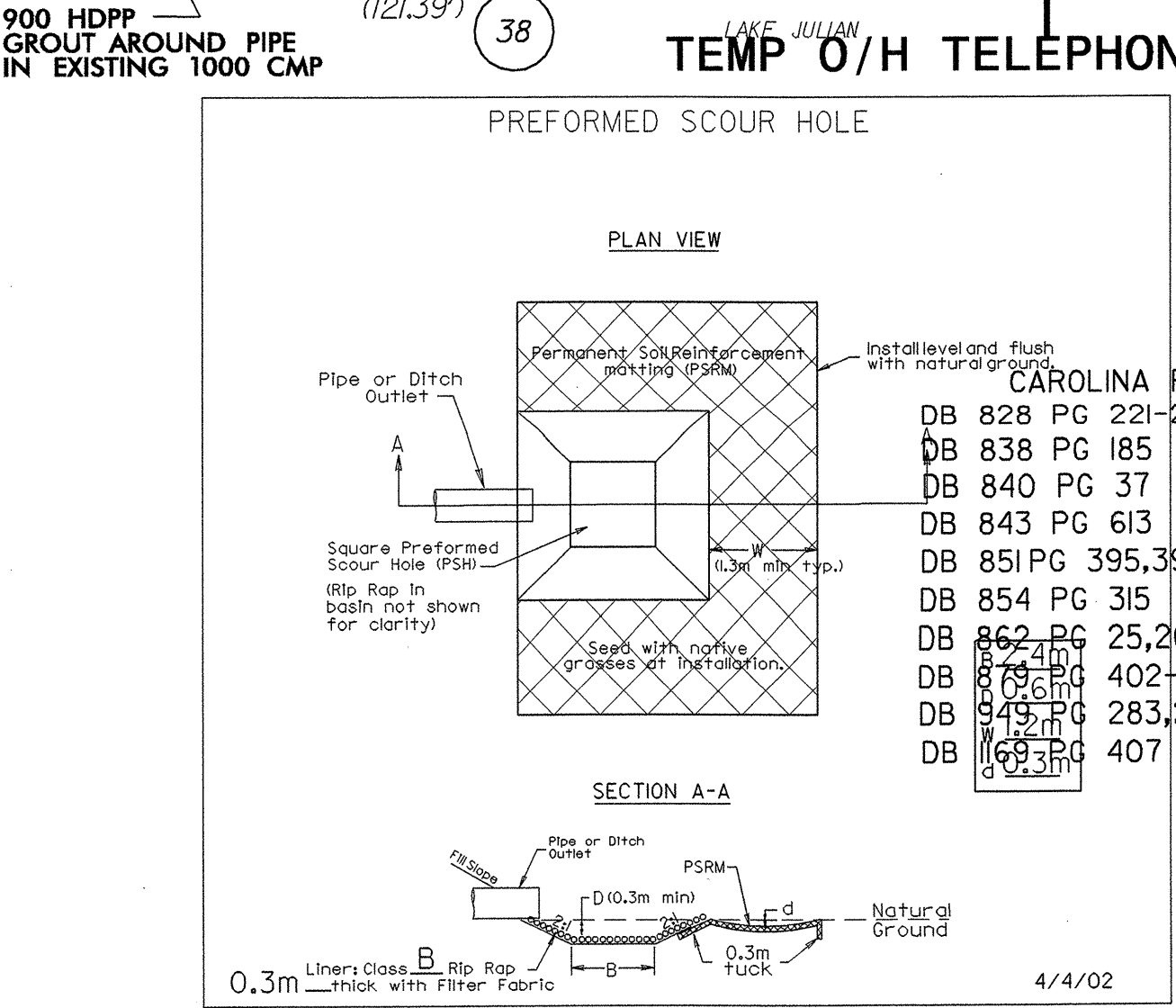
NOTE:
ALL PROPOSED UTILITY WORK
SHOWN ON THIS SHEET WILL
BE DONE BY OTHERS

NAD 83
CAROLINA POWER & LIGHT COMPANY
DB 840 PG 355
DB 859 PG 567
PB 34 PG 141



MATCHLINE STA. 57+00 -L- SEE SHEET UO-8

MATCHLINE STA. 60+40 -L- SEE SHEET UO-10



FROM STA 58+03 TO 58+48 -L-LT

CAROLINA POWER & LIGHT COMPANY	DB 828 PG 221	DB 844 PG 25,615
	DB 838 PG 185	DB 846 PG 165
	DB 840 PG 37	DB 848 PG 11,397
	DB 843 PG 613	DB 849 PG 296,409,531
	DB 851 PG 395,396	DB 852 PG 61,478
	DB 854 PG 315	DB 855 PG 131
	DB 862 PG 25,26,171	DB 863 PG 45
	DB 879 PG 402-405	PB 34 PG 141
	DB 849 PG 283,286,287,292-296	
	DB 1169 PG 407	

27-APR-2004 09:54
R:\Utilities\Projects\2813C-ROD-PSH1100-7.dgn
skouhocky